

THE Coleshill & Castle Brom POST



READ OUR PAPER ONLINE

www.postgroupmidlands.com

May 2026 Issue 143



postgroupmidlands.com

PICK ME UP FREE



EVANS
DERRY
SOLICITORS

High quality, cost-effective **legal services**

Call us on **01675 464400** or visit www.evansderry.com

5 Church Hill, Coleshill / 30 Station Rd, Marston Green / 133 Long St, Atherstone

OUR SERVICES INCLUDE

FAMILY LAW / PERSONAL INJURY / WILLS AND PROBATE / PROPERTY

Coleshill Submits Bid to Become the UK's First Town of Culture 2028

Coleshill has officially submitted its bid to become the UK's first Town of Culture 2028, setting out an ambitious vision to celebrate its rich heritage, vibrant community and future as a town that connects people locally and nationally.

Full story on page 10



- Are your feet sore?
- Do your feet hold you back?
- Are you worried about your feet?

Book in for a Free Foot Check this month whilst these appointments are still available

tel. **0121 749 6313**
www.walshpodiatry.co.uk



Our highly skilled Podiatry led team can put you at ease and provide specialist treatment to help your feet look and feel wonderful again
329 Chester Road, Castle Bromwich, Birmingham, B36 0JG reception@walshpodiatry.co.uk





**THE Coleshill &
Castle Brom POST**

The Post Newspaper Group is an independent hyper-local tabloid newspaper publisher distributing over 14,000 copies to homes and businesses in Coleshill and Castle Bromwich each month, free of charge.

Our main aim is to provide hyper-local news and information to the community where it would otherwise not be accessible. We also offer the most effective platform for local businesses to promote themselves to their target audience. This benefits the entire community and improves social-cohesion.



Any views, articles and columns expressed in this publication are those of the contributors and not necessarily those of the Publisher, nor indeed their responsibility.

Advertising in our publications

In order to deliver The Post free to our readers we rely on advertising revenue from local companies.

We work with you to create the most appropriate package for your business, after all it's in our interest to make each advert work and keep everybody happy.

We can design professional artwork if needed and offer sound advice based on years of knowledge.

By choosing to advertise with us you are also showing your support for the community and the customers you hope to serve.

Getting in touch

Sales:
editor.postgroup@outlook.com
07805 430191

General inquires:
serena.postgroup@outlook.com

WHY CHOOSE HYPER-LOCAL?

People prefer to buy locally and they trust local print media above all else.

Show support for the community where your customers live.

Hyper-local content - every page dedicated to the local area.

Bringing the community together by making all information available in one place.

Affordable and effective advertising packages to help small businesses promote themselves better and cheaper.

Help to increase footfall on the High Street and boost attendance at local events.

Give groups, clubs and organisations space to promote themselves and let local people know exactly what is available on their doorstep.



THE Coleshill & Castle Brom POST

CIRCULATION

Door to door around:

Coleshill
Water Orton
Shustoke
Maxstoke

Curdworth
Lea Marston
Marston

Bulk paper drops in Public places, including – Supermarkets, Schools, Garden Centres, Train Stations, Pubs and Local Convenience Stores.

Minworth
Castle Bromwich
Marston Green
Smiths Wood

Chelmsley Wood
Kingshurst
The Whitacres

Also available online on our website and facebook pages.



BOOKKEEPER 24/7

BOOKKEEPING AND ACCOUNTS SERVICES.

- Bookkeeping
- Self Assessments
- Payroll
- Vat Returns
- Making tax digital



Call: 07919-488314

Email: contact@bookkeeper247.co.uk

www.bookkeeper247.co.uk



carpentry

FOR ALL YOUR CARPENTRY NEEDS

FREE QUOTES

- Traditional roofing
- 1st fix and 2nd fix joinery
- Kitchens
- Bespoke one-off pieces
- Garden decking
- Any and all aspects
- 20+ year's experience
- Fully insured friendly service



Mobile 07845683388

Email fhacarpentry@outlook.com

KINGSBURY GARAGE DOORS

YOUR LOCAL GARAGE DOOR SPECIALIST

ALL TYPES OF GARAGE DOORS & FRONT DOORS



We are a family run business that carry out repairs and new installations

Great Choice • Great Quality • Great Service

CALL US ON: 01827 236090

email: info@kingsburygaragedoors.co.uk



Breast
Friends
Solihull

THANK YOU, THANK YOU, THANK YOU!

Breast
Friends
Solihull

To all the super supportive Coleshillians who came to join in to raise funds for this hard-working, much needed cancer charity.

So many lives and people we know and love are now battling with this disease, all monies raised and conversations had to support one another, are really needed. Every family seems to be affected in some way big or small, so events like these are really good at bringing people together to share time, have a laugh, eat cake and raise money for the benefit of others.

The Breast Friends Charity is a small charity within Solihull hospital who support anyone, men or women, diagnosed with Breast Cancer. It is entirely run by

volunteers who have all been through this journey.

Our lovely Hub volunteer Joan, and her daughter Sharon who owns Heads of Coleshill hairdressers on the High Street, led this event and then in the evening Alison Core organised a quiz.

Very special thanks must go to the volunteers from both the Coleshill Hub and Castle Bromwich Hall Gardens who gave up their time and worked incredibly hard to create the success that it was.

They all put lots of time and effort in to putting on a great spread of cakes, many donated by local residents and families, and stalls for the guests to peruse and buy treats.

We are delighted to advise all that due to the success of this event, we raised a fantastic amount of £3500!!!!

Special thanks to Opmobility, a local business, whose staff provided a huge number of raffle prizes. But so many others kindly donated prizes which were so gratefully received.

The atmosphere is always upbeat and jovial, even though the subject matter is challenging, everyone appeared to enjoy themselves and join in to achieve this great success. **THANK YOU, THANK YOU, THANK YOU ALL AGAIN!!** Without our caring Coleshill community around us these events wouldn't succeed. Coleshill you are amazing.



ALL PLUMBING & HEATING JOBS

Finance
NOW
available
through
Kanda from
0% APR

- Boilers install & Service
- Bathroom Fitting
- All plumbing heating & Gas jobs

Boilers
Service
£70

Contact us for a **FREE** quote



Call Joe on: 07792 470 504
www.jpdeakin-plumbing.co.uk

JPDEAKIN
PLUMBING & HEATING





Rachel Taylor MP, North Warwickshire and Bedworth

Hate crime law strengthened after campaign by North Warwickshire and Bedworth MP



Hate crime law is to be strengthened so perpetrators face tougher sentences after a successful campaign by the North Warwickshire and Bedworth Labour MP.

Rachel Taylor MP said it was unacceptable that up until now those who committed acts of racial and religious hatred received harsher punishments than those who committed hate crimes against LGBT and disabled people, which is why the law needed to be changed.

Last year, Rachel introduced an amendment to the Crime and Policing Bill that would make all hate crimes – and not just those motivated by race and religion – ‘aggravated offences’ worthy of tougher sentences. Today (15 April), the North Warwickshire and Bedworth MP expressed her delight that the change she campaigned for has now been passed by MPs and will become law.

She also welcomed the government’s move to introduce a new crime of hate motivated by misogyny to hate crime law for the first time.

Rachel’s campaign was backed by 104 cross-party MPs, who added their name to the amendment ahead of a debate on the Crime and Policing Bill. During that debate, Rachel said: “We must have hate crime laws that show that whether it is your race or your religion, your

sexual orientation, your gender identity, or indeed your disability, that Britain is a country that will not tolerate it. That all hatred is equal. And that all those who commit vile acts of hatred will face the same grave consequences.”

Rachel Taylor MP, Labour MP for North Warwickshire and Bedworth, said:

“My constituents in North Warwickshire and Bedworth need to know that they are protected from vile acts of hate, whether that’s racist hate or hate motivated by the fact they are gay or disabled.

“It’s shocking that between March 2023 - 2024, over 40,000 hate crimes against people in Britain because of their sexual orientation, transgender identity, or disability were recorded by the police. I am absolutely delighted that the government have listened to me and the cross-party MPs who supported this vital change, and that MPs last night voted for that change to become law.”

The Grammar Schools in Birmingham

Year 7 Entry For September 2027

Register Now for the Entrance Test
Closing Date Friday 26th June 2026 at 4pm



**Bishop Vesey's
Grammar School**
'Inspiration & Excellence'



**KING EDWARD VI
ASTON SCHOOL**



**KING EDWARD VI
CAMP HILL
SCHOOL FOR BOYS**



**KING EDWARD VI
CAMP HILL
SCHOOL FOR GIRLS**



**KING EDWARD VI
FIVE WAYS SCHOOL**



**KING EDWARD VI
HANDSWORTH GRAMMAR
SCHOOL FOR BOYS**



**KING EDWARD VI
HANDSWORTH
SCHOOL FOR GIRLS**



**SUTTON COLDFIELD
GRAMMAR SCHOOL
FOR GIRLS**

For more information please visit: westmidlandsgrammarschools.co.uk

NOT MADE YOUR WILL YET? DOES IT WORRY YOU THAT...

Your children may NOT inherit all of your home or your hard earned savings... but the Government and others could!

Care Fees, Inheritance Tax, Huge Legal Fees and more devastate thousands of families, often unnecessarily.

We come to you at a time to suit you for a FREE home visit.

With the **RIGHT WILL** and advice, you can help ensure the **maximum possible** goes to those you love!

It all starts with a Will from **£95.00+VAT***

**standard basic Will*

ACCORD
LEGAL SERVICES LTD

 Institute of
Professional
Willwriters
MEMBER

 APPROVED CODE
TRADING STANDARDS UK

Confused? Concerned? Call Paul!
0845 055 9415 | 07980 780709
paul.palmer@accordwills.co.uk

READ OUR PAPERS ON THE GO

www.postgroupmidlands.com



 **POSTGROUP
MIDLANDS LTD**

NEW

Landscaping Collection Out Now

- Premium Paving
 - Decking & Cladding
 - Garden Structures
 - Fencing & Walling
 - Decorative Gravels
- ...and much more!*



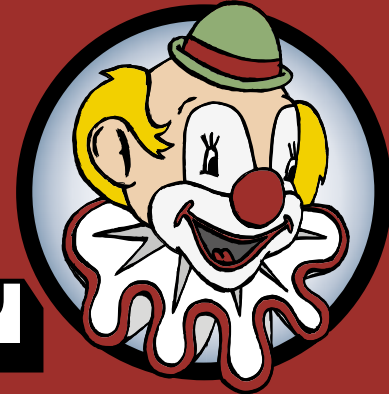
**Download
today**



 **EH Smith**
Builders Merchants

 **Chester Rd, Castle Bromwich**
 **0121 713 7177**  **ehsmith.co.uk**

Water Orton CARNIVAL



Saturday 20th June

Procession starts from the Village Green around 10.45 featuring floats including our Royal Court, local community and sports clubs, sports and vintage cars and walking procession.

ATTRACTIONS INCLUDE:

- LIVE MUSIC ON STAGE • OVER 40 LOCAL STALLS WITH PLENTY TO EAT AND DRINK •
- OUR DOG SHOW • STANWORTH'S FUN FAIR • FREE CHILDREN'S CRAFT TENT •
- OUR ROYAL COURT • DANCING DISPLAY IN THE ARENA • RETRO SPORTS DAY •
- CENTRAL LEGION SUPERHEROES •

For more information visit our website www.waterortoncarnival.co.uk or follow our FaceBook page:  [waterortoncarnival](https://www.facebook.com/waterortoncarnival)

Thanks to our sponsors and supporters, with more to follow!



ADMISSION BY PROGRAMME ONLY

These are available in advance for £3 (£4 on the day)
 One Adult Programme admits two children FREE.

OAPs in advance £2.50, (£3 on the day)

Programmes will be available from Water Orton Fish Bar, The Dog Inn, The Village Cantonese, The Link, the Library, Old Salts Rugby Club, Lavish Look, O'Connors, The Gardener's Rest & Orchard Nurseries.



Castle Bromwich
Hall Gardens

The Merry Month of May!



Certainly is the case with us here at the Gardens. Our successful Morris Into May event, which was a response to the cancelled Wassail in January 2025, was so popular that it's back! 3rd May 2026.

Set against the beautiful blossoming of our heritage orchards, the afternoon will prove to be one of merriment and uplift. Join us for our wild and wonderful celebration of the blossoms and arrival of Summer as we are led in dance, song and revelry to chase the vestiges of Winter away in true Border Morris style. Accompanying the punk morris of Beorma, we have the Wild Man of the Wood guiding us through the folklore and traditions of May Day. Decorate your own willow crowns with our lovely volunteers, and join in with the merry-making of a truly marvellous afternoon.

Come dressed for the occasion, in white and florals, and you may just be crowned our May Monarch... see website for further details.



'Ne'er cast a clout till May is out'

It's never clear whether this old saying is about May blossom – hawthorn – or the month of May.

Either way, the unpredictability of the weather seems to continue into this modern age, so we have got used to 'layering up' our clothing to deal with four seasons in a day.

For our hardworking Gardeners, this month brings further perils. The longer days really have warmed up the earth so all the plants put on a real growth spurt. But then, so do the weeds!... Aargh.

We may have thirty and more volunteer gardeners but even they can't keep up with all the new 'plants in the wrong place'. Here at the Historic Gardens we pride ourselves as champions working with, not against the natural world and the environment – so in one sense 'weeds' should be welcomed as food for bees and insects...

On the other hand we are also guardians of the early eighteenth-century style of these historic spaces. The attitude of the late Stuarts and early Georgians was far more about 'conquering' and 'controlling' nature so plants were kept in rows, isolated from each other; some were even kept from flowering at all! Nowadays we are far more in tune with the needs of Mother Nature and adapting our working patterns.

The beauty and bounty of May is a great month for our visitors, but spare a thought for the poor Gardeners toiling away balancing the needs of history with the rampant fecundity of 'the wild'.

Other activities in the Gardens in May

We have another championing the 'local gal' Edith Holden, with a day of gentle art and talks. Be inspired by the beauty of her illustrations, and explore the Gardens, pencil and paper in hand, to sketch whatever guides you. It's a day where entry fees apply, but a wonderful chance to interact with these Eighteenth-century gardens in a creative way.

Hanami Blossom Picnics with Japanese Food

Spend time relaxing and picnicking in our heritage orchards, spaces of great beauty and botanical importance. Indulge also in delicious homemade Japanese food by chef Yumi Grindley, and some traditional crafts from the Land of the Rising Sun. It's a day of calm welcome, and gentle activity.

Blue Moon Circles

The Blue Moon Circle is a spiritual, emotionally and enlightening experience. For those aged 16+ that are either pagan and proud, dipping their toe or completely new to this nature-based way of life and keen to learn more. You will meet the Tid Mona Coven and have a chance to chat in a social relaxed setting before moving to the circle sites to listen to fantastic astrological knowledge that corresponds with the new moon. Following this you will create a circular and sacred space to welcome the Blue Moon's potent energy for intention-setting, manifestation, looking forward, connecting and creating community. There will be guided meditation and of course self-reflection.

This can have quite the emotional impact so there is time following this to take space for yourself, then join the group again on the terrace to create community.



Looking Ahead - We're Going Medieval

Although it's far off, we are most excited for the Summer. There is lots of the usual activity - Soul Picnic, Mrs Barbara Nice and Digbeth Dining Club (see website for further details). But the difference of this Summer will be the introduction of a Medieval Summer. Complete with Knights Schools, Medieval Music, Theatre and Dragons, there will be a great many things to entertain, interest and enliven across the summer. We are even hoping to decorate the Courtyard Cafe and Shop in the style of a Medieval Tavern. Dressing up will very much be encouraged! Watch this space...

ORCHARD NURSERIES

1973 - 2025

Lets Welcome Spring!!

We have so much to kick start your Gardening Year!

- Our biggest range of Ornamental and Fruit Trees, at same price as last year!
- Seed potatoes, onion sets, seeds, soft fruit, herbs, vegetable seedlings.
- New season Roses
- Fresh selection of Alpines
- Wide choice of herbaceous perennials.
- Evergreen and deciduous shrubs.
- New selections of Ceramic and plastic pots.
- Compost, mirrors, clocks, wall art, Gifts and so much more....



ORCHARD NURSERIES | BIRMINGHAM ROAD
 WATER ORTON B46 1TG
0121 749 7266

OPEN 10-5 MON -SAT 10-4.30 SUNDAY



Tea, Coffee, Cakes, Light Snacks - Eat in or Takeaway

**Why not book one of
 our delicious Afternoon Teas
 Booking and deposit required.**

Come and enjoy our freshly cooked breakfast, Vegan and vegetarian options, hot and cold sandwiches, toasties, jackets, cream teas and of course homemade cakes - takeaway options available

Afternoon tea, prebooking required for up to 25 people

Whole cakes by preorder

Traybakes and brownies also available to order

Check out our Facebook page for more details

Open currently Monday/Tuesdays 9.30 - 2pm

Wednesday/Thursday/Friday/Saturday 9.30 - 3pm

Sunday 10.00 - 1pm

Please enquire regarding group bookings.



Orchard Nurseries, Birmingham Road, Water Orton B46 1TG

Tel: 0121 749 7266 / 07450102855

Julie_heenan@yahoo.co.uk

Coleshill Submits Bid to Become the UK's First Town of Culture 2028

Coleshill has officially submitted its bid to become the UK's first Town of Culture 2028, setting out an ambitious vision to celebrate its rich heritage, vibrant community and future as a town that connects people locally and nationally.

Once a vital coaching stop on the road between London and the North, Coleshill was a place of rest, exchange and possibility, where horses were changed, stories were shared, and connections were forged. Today, as HS2 reshapes the region, Coleshill once again finds itself at the heart of change – reinforcing its identity as a place where journeys meet.

The bid sets out a bold cultural programme that will transform the town into a living stage. Historic landmarks such as St Peter and St Paul's Church, the town's coaching inns, and its green spaces will host performances, installations and events that celebrate Coleshill's unique story. Plans include immersive heritage experiences, digital storytelling, outdoor festivals and creative commissions that bring together arts, history and technology.

At the heart of the bid is a commitment to community. The programme has been shaped through collaboration ensuring it reflects the voices and ambitions of the people who live and work in Coleshill. A strong focus on young people will create new opportunities through creative skills

development, apprenticeships and youth-led projects.

The bid also highlights Coleshill's wider cultural identity – from its industrial heritage, including connections to Typhoo Tea, to local folklore such as the story of the travelling elephant said to be buried beneath the town. These stories will be brought to life in new and imaginative ways, helping to raise the town's profile on a national stage.

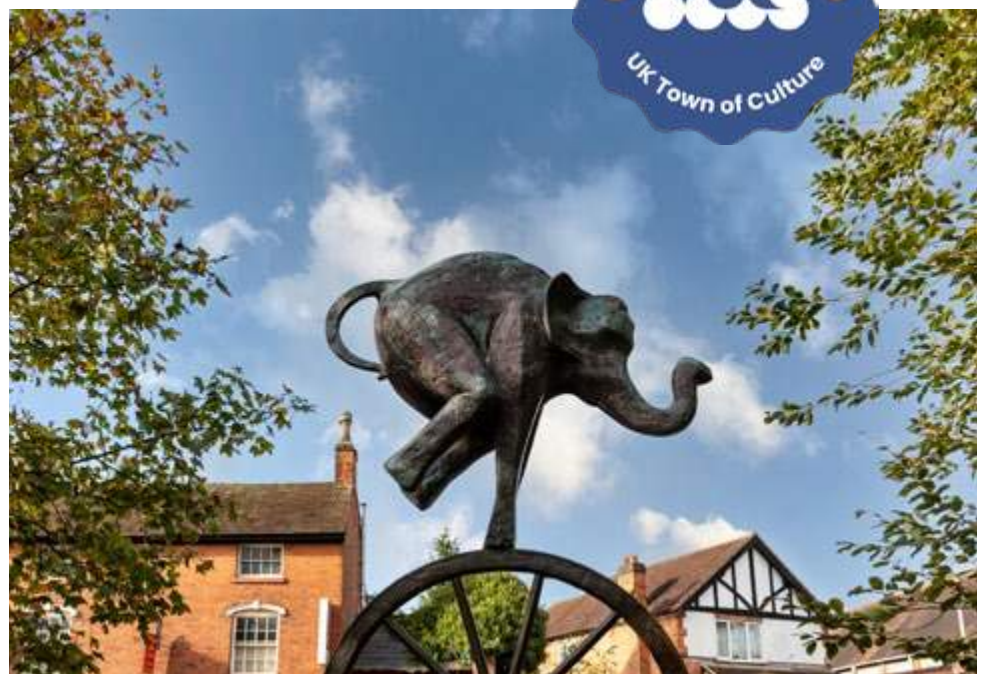
A dedicated communications campaign will ensure Coleshill's story reaches audiences across the UK, positioning the town as a distinctive cultural destination that blends heritage with innovation.

If successful, Coleshill 2028 will deliver a year-long programme of cultural activity designed to boost local pride, support economic growth and create lasting opportunities for residents and creatives alike.

"This bid is about making culture accessible to everyone. It's about giving local people a voice and creating something we can all be proud of. Coleshill has an incredible story to tell, and this is our chance to share it."

Jayne Battle - Chairman of Coleshill Partnership

The Town of Culture initiative aims to shine a spotlight on smaller towns with big cultural ambitions, recognising the vital role they play in the UK's cultural landscape.

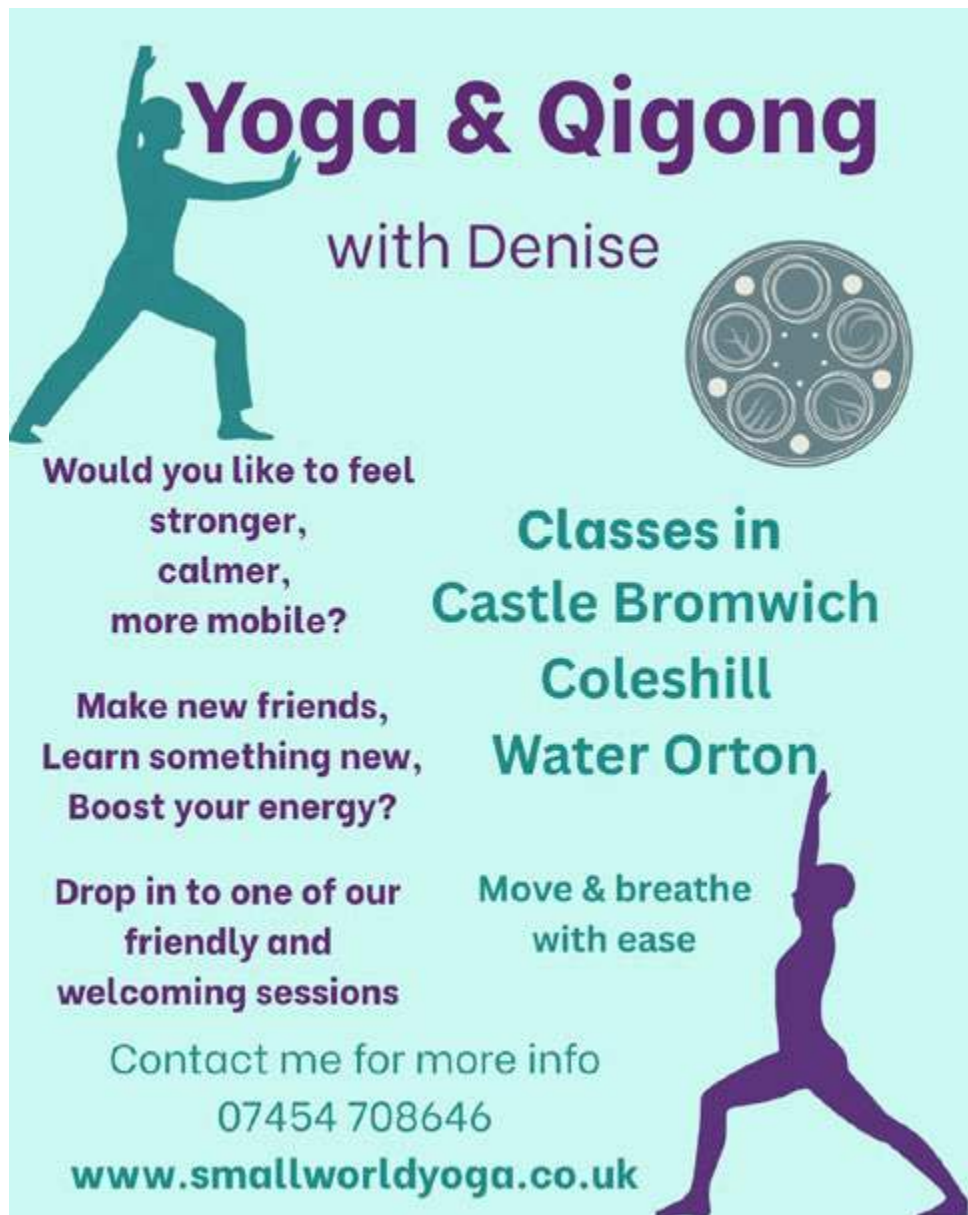


Good for your body Good for your mind

It's the perfect time to get active. When you move more you not only give your body a boost, but you give your mood a lift too.

Make the first move for your mental health. Search

Every Mind Matters



Yoga & Qigong

with Denise

Would you like to feel stronger, calmer, more mobile?

Classes in Castle Bromwich Coleshill Water Orton

Make new friends, Learn something new, Boost your energy?

Drop in to one of our friendly and welcoming sessions

Move & breathe with ease

Contact me for more info
07454 708646
www.smallworldyoga.co.uk



The Shabby Attic

*** FREE VALUATIONS ***

Unlike some other businesses we DON'T charge a fee when we value your jewellery/coins etc

Anything that you consider may have monetary worth, or if you're unsure we will try and value it completely FREE of charge with absolutely NO obligation to sell.

The Shabby Attic liaise with experts who have knowledge in different areas of valuables, the list below is just some of the items we will take a look at and we will always strive to offer the best CASH offer if there is value.

We also offer bank transfers as well as cash payments.

- * Gold, broken, dental etc * Silver * Silverware
- * Costume Jewellery * Vinyl Records
- * Vintage Advertising * Antiques
- * Georgian/Victorian * Masonic Regalia
- * Watches * Pocket Watches * Militaria
- * Lego * Glassware * Vintage * Coins
- * Vintage Toys/Antique Toys

Nothing above ??

Bring it in, we'll take a look... there's nothing to lose!!

82 High Street, Coleshill B46 3AH
Tel.07528964681



At Walsh Podiatry, we understand how much the appearance of your feet can impact your confidence. Damaged, discoloured, or misshapen toenails, whether caused by fungal infections, injury, or long-term nail conditions are incredibly common, but that doesn't mean you have to live with them.

Nail reconstruction is one of our most popular cosmetic podiatry treatments, designed to restore the natural look of your toenails quickly and effectively. Using specialist podiatry-grade materials, we carefully rebuild the nail to create a realistic, breathable finish that looks and feels like a natural nail. The result is immediate—leaving you able to wear open-toed shoes with confidence again. This treatment is ideal for patients with partial or damaged nails and can often be carried out alongside ongoing treatment plans where clinically appropriate.

At Walsh Podiatry, every nail reconstruction begins with a thorough assessment to ensure your nail health is prioritised as well as its appearance.

Our patients often tell us the biggest benefit isn't just how their nails look, but how they feel, more confident, more comfortable, and no longer needing to hide their feet.

With results lasting several weeks and simple maintenance appointments, nail reconstruction is a safe and effective way to transform the look of your nails.

If you've been covering up your feet or avoiding certain footwear, our team at Walsh Podiatry is here to help you feel confident again.



If you would like to book an appointment to see one of our HCPC registered Podiatrists, you can at www.walshpodiatry.co.uk or by calling us on 0121 749 6313.

just go. holidays

Reader travel


Great Little Trains of North Wales & Portmeirion

Departing Mon 8 Jun '26

Enjoy a visit to the unique, Italianate village of Portmeirion and discover the historic railways and meandering tramways of North Wales on this fantastic five-day break, based in Llandudno, the 'Queen of the Welsh Resorts'.

SO MUCH INCLUDED...

- ✓ Return coach travel from Solihull, Sutton Coldfield
- ✓ 4 nights at the Baytree Hotel, Llandudno (JG3 rating) with dinner & breakfast
- ✓ Entertainment some evenings
- ✓ Heritage journeys on the Welsh Highland Railway, Great Orme Tramway & Ffestiniog Railway
- ✓ Free time in Llandudno
- ✓ Excursions to Caernarfon & Portmeirion

▶ **SAVE £30 - Quote PGM**
- Book by 22 May 2026

5 Days by Coach only £539

Single Supplement £80



Northumberland, Hadrian's Wall, Holy Island & Alnwick Castle

Departing Mon 27 Jul '26

Explore the very best Northumberland has to offer on this captivating break! Enjoy excursions to the famous Roman site, Hadrian's Wall and the unique Holy Island of Lindisfarne, two of the most significant and unspoilt sights in the UK.

SO MUCH INCLUDED...

- ✓ Return coach travel from Solihull, Sutton Coldfield
- ✓ 4 nights at the Leonardo Hotel, Newcastle Quayside (JG3 rating) with dinner & breakfast
- ✓ Guided tour of Hadrian's Wall
- ✓ Excursions to the Holy Island of Lindisfarne, Alnwick Castle, Hadrian's Wall & Chesters Fort

Optional excursion to Durham (£15pp)

5 Days by Coach only £499

Single Supplement £120

Coach package holidays are operated by & bookings made subject to Just Go! Holidays terms & conditions which can be found on our website. Your booking is protected by Bonded Coach Holidays (BCH) and the Association of Bonded Travel Organisers Trust Limited (ABTOT). Tours offered subject to availability. Errors and omissions excepted. Prices per person, based on two people sharing a room; a small number of pickup points may incur a supplement. Calls to 033 numbers are free within inclusive minute packages otherwise standard rates apply. Prices are correct at the time of printing and will be honoured for bookings made on or before 7 days after publication. Prices after this date are subject to fluctuation.



For more information, or to book, please call

03332 341 856 Quote PGM

 or visit us online at [justgoholidays.com/PGM](https://www.justgoholidays.com/PGM)

033 numbers are free within inclusive minutes packages otherwise standard rates apply.



Trustpilot



Ultra running



Bishop Michael Volland, the Bishop of Birmingham and I hold something in common. We both 'enjoy' ultra running.

He writes in his small book, 'Accepted in the Beloved' the following: -

'I have learnt that it isn't enough to simply try to switch off during evenings or days off. You can't simply stop thinking about things, especially if the issue is sensitive or if any decision is likely to have significant consequences. My advice is to find something consuming and life-giving to do that is not work'.

I imagine other people reading this in leadership roles or demanding roles can relate to this. I know I can.

For Michael and myself it is ultra-running. It is in no way related to work and for me it is a

great way to stay healthy and de-stress. Later this year we are planning to run an ultra-together. Let's see if we can avoid talking about work!

On the 17th May I plan to do my next Ultra marathon across the fells in the Lake District. The 50k ultra takes in some of the best trails and views that the Watendlath, Borrowdale, Buttermere and Newlands valleys have to offer.

If you would like to sponsor me then this is the link. www.stewardship.org.uk/pages/Ultra_for_BCM

Birmingham City Mission (BCM) is a charity that works to support the vulnerable in Birmingham and proclaim the gospel.

Michael, says in his book, 'for leaders, many things are never really finished'. To complete an ultra and know that you have finished the run is a blessing and a joy.

I am already looking forward to crossing the finish line in May. And celebrating with a cold beer.

As an aside Bishop Michael will be preaching at Water Orton Church on the 7th June at both the 9am and 1am services.

Rev Paul Tullett

paulofwaterorton@hotmail.co.uk
07581544978

the PURPLE HOUSE CLINIC



Mental Health & Neurodiversity Services


At the Purple House Clinic we understand that psychological health is as important as physical health. We believe that everybody deserves to be happy and fulfilled in life, and we are committed to helping people overcome, or adapt to, life's challenges.

Our Services

Delivered by a team of highly qualified and registered healthcare professionals, our services include:

- Psychological Assessment
- Psychological Therapy
- Autism and ADHD Assessment
- Occupational Therapy
- Sensory Assessment
- Couple and Family Therapy

 0121 820 7851

 birmingham@purplehouseclinic.co.uk
 Coleshill - with easy access from the M42

Castle Bromwich u3a

Just letting you know that the u3a group that meets on the last Wednesday of the month at Arden Hall Water Orton at 1.30pm will be entertained by a speaker telling us

all about the magic of glass.

If you're thinking of joining us then do come along and try us out. It is £3 per visitor which includes tea/ coffee and biscuits.



Coleshill Town Hall Centenary

The Centenary of Coleshill Town Hall is almost upon us. The grand "opening" will take place at 12noon on Saturday 13th June and everyone is invited. Our M.P. Rachel Taylor and the Vicar of Coleshill, Reverend Sarah Tillet will lead the celebrations, followed by the Mayor of Coleshill. A huge cake, supplied by Sweet Things of Chamberlain Walk, Coleshill and sparkling drinks will be served.

The Old Courtroom will be full of displays from organisations and groups from the community, revealing the history of the Hall, events which have taken place there, Court cases heard when the room served as the courtroom until the Magistrates court building was built, what is happening in our town now and so much more.

At 2pm Coleshill's award winning Town Band will lead the afternoon's performances in the Fifield Hall. Fusion of Dance will follow, then Coleshill C of E Primary School's samba band, a poetry recital by members of U3A, St Edward's School year 6, with the afternoon session completed by a rendition of songs from the early part of the last century by Coleshill On Stage.

Refreshments will be available to purchase throughout the day provided by The Upper Crust of Coleshill.

A break will follow until 7pm, when Coleshill Drama Group will perform an original piece, especially written for the occasion by Jon Pegg, about some of the difficulties encountered when the Town Hall was first planned. After that the evening will be filled with songs from the 1940s, 50s, 60s and 70s, delightfully performed by Jessica Hudson (D Day Darling), Sarah Fulwood, Roger Valentine and Mark Green as our own Elvis. This is truly an evening of free entertainment not to be missed. All the displays in The Old Courtroom will remain open until 10pm.

On Sunday 14th June, the Hall and displays will again be open at 12 noon. Performances commence at 2pm with more stunning shows from Fusion of Dance, Coleshill Beginners' Band, High Meadow School, Coleshill Drama Group, the Coleshill Collective Poetry Group and culminating in a superb finale by Coleshill Youth Brass.

Entry to the whole weekend of events is free of charge and each family attending will be presented with a special Souvenir Booklet to commemorate this once in a century occasion.

Many months of hard work by all involved will culminate during this weekend. Coleshill Town Council invites everyone to come along and enjoy these celebrations and thanks all who have prepared, exhibited, rehearsed, performed, and contributed in so many other ways to this event in the Town Hall, which the Council is proud to call its "home".

205 Tyburn Road, Erdington, B24 8NB (Covering all areas in the West Midlands)
0121 4484290



julieenglishinteriors.com



- Julie offers a one to one personal service from start to finish, ensuring your project is executed to perfection.
- Specialist in Bathroom and Wetroom Design for Domestic and Commercial projects. Access to Exclusive Products and Ranges.
- 3D Visuals to help you visualise your space.
- Offering a wide range of Fitted and Sliding Door wardrobes tailored to your storage needs. Beautiful designs and matching combinations to complement and work with your home interior design.
- Supply only or Supply and Installation Service available using trusted tradesmen of 15 years.
- Made in the UK, Julie English Interiors offer a stunning collection of modern and classic styles to create your own individual kitchen scheme.
- Covering every room in your house, using branded and recommended products which will stand the test of time.
- Visit the studio for inspiration.

Step 1 > Explore Your Options Step 2 > Site Visit Step 3 > Design & Quotation

HM Government

NHS



Small steps to lift your mood

Make the first move for your mental health. Search **Every Mind Matters**

Better Health Let's do this

Discovering the Hidden Flavours of Tikka Town



From the moment you step upstairs, the atmosphere shifts. The restaurant is beautifully decorated, successfully blending a modern, stylish aesthetic with a warmth that "oozes" comfort. It is the kind of space that invites you to relax and linger. You can immediately feel the dedication of Mac, the owner, and Saleem, the restaurant manager. Their passion for hospitality is evident in the seamless service and the focus on fresh, quality ingredients.

If you find yourself near the Castle Bromwich shopping centre, look across the road from Tesco toward Manor Park Road, and you'll find a true local treasure. Tikka Town is perched on the first floor above a café, and while it might feel like a "hidden gem" upon arrival, it is anything but a secret to the locals. Despite its fresh, contemporary appearance, this family-run establishment has been a staple of the community for over five years, building a reputation for excellence that keeps its tables full.



One of the most appealing features of Tikka Town is its BYOB policy. Since the restaurant doesn't have a licensed bar, guests are welcome to bring their own alcohol. This makes for a fantastic "win-

win" situation, allowing for a much more affordable night out without sacrificing the quality of the dining experience (though a great selection of soft drinks is available to purchase).

Because of its popularity, we were glad we booked in advance—a step I'd highly recommend to anyone planning a visit. We visited specifically to try the all-new Tawa, a sharing feast exclusively available on Sunday nights. At £28.95 for two people, the value is exceptional. It arrived as a stunning spread featuring a rich Tawa Curry, fragrant Biryani rice, and various traditional sides.



The food took about 20 to 25 minutes to arrive, which is always a reassuring sign in an Indian restaurant—it confirms that everything is being prepared fresh to order rather than sitting under a heat lamp. The wait was more than worth it. The naan

was a highlight: incredibly light, fluffy, and charred to perfection in the tandoor.

I had the pleasure of being introduced to Chef Noman, and I couldn't help but offer my compliments. He has a gift for harmonising spices; the aroma of the Tawa was incredible, but the depth of flavour was even better. If you're looking for a dining experience where the passion is as clear as the quality of the food, Tikka Town is a must-visit.



A takeaway service is available, on collection and they also offer a delivery service by telephoning – 0121 749 5666

If you order online you can bag a discount of 20%

ADVERTISE YOUR BUSINESS HERE

For more information
on how to advertise
please call:

07805 430191

or email:

editor.postgroup@outlook.com


**POST GROUP
MIDLANDS LTD**


TIKKATOWN

INDIAN RESTAURANT & TAKEAWAY

INTRODUCING
SUNDAY TAWA NIGHT

A sizzling, flavour-packed sharing experience
crafted fresh by our chefs and served hot.

From rich curries to tandoori favourites,
every platter brings people together.

FATHER'S
DAY
BOOKING
NOW BEING
TAKEN



0121 749 5666 ORDER ONLINE: WWW.TIKKATOWN.CO.UK
A MANOR PARK RD, CASTLE BROMWICH B36 0DG



Sumner Road, Coleshill
Hours: Mon to Fri 10:00 to 13:00
Tel. 01675 462517
www.coleshillhub.org.uk
coleshillcommunityhub@gmail.com



**Next Town Council Meeting –
22nd Apr 7pm at
Coleshill Town Hall**

INFORMATION

**Help and support for any enquiries or issues such as:-
Blue Badges, Driving Licence, Passport Applications, Online Benefit Forms (including Pension Credit Checks) and much more.**

All welcome, come and visit us for a chat and see how the Hub could help you.



Signposting to many groups, partner services and agencies – see some examples in boxes below:-



GROUPS

**Parkinson's Cafe
Memory Cafes
(Coleshill/
Water Orton)
Young at Heart
Stitch Sewing Club**

GROUPS

**Walking Tours
Keep Fit & Natter
Walking Sports
Art & Crafts
U3A
Parents & Toddlers**

SIGNPOSTING

**Carers Trust
CAB (Citizens
Advice Bureau)
MIND
Vision Support
Wellbeing**

TWO WARM HUB'S

**Community Centre (Tue only) and Town Hall Tue to Thu 10 to 1.
Come in for a chat and join in activities if you wish.
Free refreshments.**



Pet Page

Birmingham Dogs Home - Forever homes



Ivy

Breed: Cane Corso Gender: Female

Meet Ivy! Our sweet Cane Corso.

Ivy is a beautiful Cane Corso who came to us through no fault of her own. From the moment she arrived we could see she was a sensitive soul who truly deserves a loving home. At first Ivy was quite timid but with patience and kindness she has shown us just how affectionate she can be. Her progress has been amazing and she is now ready to find her forever family.

Ivy can still be a little nervous when meeting new people but a few tasty treats quickly win her trust. Once she feels comfortable she becomes the cuddliest companion you could wish for. Because of her gentle but cautious nature Ivy is looking for a home with children aged 13+ who understand that she may need space and time to settle in. She wouldn't be suitable for first time owners and will need someone who is confident with large breeds.

Ivy hasn't shown much interest in toys yet but she absolutely loves running around and having zoomies in our paddocks. She's also a clever girl who already knows how to sit and give paw and she'll do just about anything for a tasty treat. Ivy will need to be the only dog in the home as she prefers her own space and doesn't like other dogs getting too close. However she's happy to walk past them on lead when asked.

With the right family Ivy will blossom into the loving loyal companion that we know she can be. If you can offer Ivy patience love and a safe space we'd love to hear from you.

If you are interested in adopting, please contact the centre on 0121 643 5211 to enquire.

www.birminghamdogshome.org.uk

BIRMINGHAM DOGS HOME
PRESENTS A MINI

COUNTRY FESTIVAL

22ND AUGUST 2026
at BDH, SOLIHULL, B92 0DJ
from 5:00PM to 11:00PM

SPECIAL PERFORMANCES BY

- ★ KASSIDY KIERNAN ★ TWO WAYS HOME ★
- ★ BUCKLE 'N' BOOTS ★ ROBIN COOPER ★
- ★ COUNTRY CHIX ★

PLUS

- LINE DANCING ★ SHOPPING ★ BUCKING BRONCO
- LICENSED BAR ★ FACE PAINTING ★ COWBOY CRAFTS

BOOK YOUR TICKETS NOW



birminghamdogshome.org.uk Company Registration No: 662947. Registered Charity No: 222436 FR REGULATED BY THE CHARITABLE REGULATOR



Good for your body Good for your mind

It's the perfect time to get active. When you move more you not only give your body a boost, but you give your mood a lift too.

Make the first move for your mental health. Search

Every Mind Matters

500 million years of plant and human history captured in BBC Gardeners' World Live headline garden



18-21 June 2026
Birmingham NEC



A dinosaur, giant dragonflies and primeval plants are set to take centre stage at BBC Gardeners' World Live this summer in a large-scale, living landscape conceived by Professor Alice Roberts, the anatomist, biological anthropologist, author and broadcaster (Digging for Britain, Coast, The Incredible Human Journey). Designed by multi award-winning garden designer Professor David Stevens, The Garden of Evolution will trace the origins of plant and animal life to the present day. Alice Roberts will be hosting live, daily conversations about The Garden of Evolution, and experts from plant suppliers, Hillier, will be discussing some of the plants featured.

Professor Alice Roberts said. "I've always been fascinated by evolution. I want to have visitors walking through time as the world evolves around them, explaining how life unfurled on the planet, step by step and stage by stage."

Designer David Stevens said: "Ideas and working as a team are what gardens are all about. I'm thrilled to be working with Alice on this wonderful project."

Visitors will enter the landscape in the Cambrian age with its dramatic rocks and cascading water. As they wind their way through 500 million years of plant history, mosses, ferns and Ginkgos will give way to the first flowering shrubs and trees, then grasslands and the first Hominins to the eventual cultivation of crop plants like Millet and Gourds. Stepping out into the modern day, visitors will find a model of the Birmingham Institute of Forest Research's Free-Air Carbon Dioxide Enrichment (BIFoR FACE) programme. Located in a Staffordshire woodland, BIFoR FACE is one of the world's largest climate change experiments, investigating future forest responses to further changes in CO2 levels and the consequent atmospheric impact. BIFoR is based at the University of Birmingham where Alice Roberts is Professor of Public Engagement in Science.

The BBC Gardeners' World Make a Metre Matter campaign returns this year, encouraging gardeners to transform a metre of outside space to support wildlife, nature and biodiversity. BBC Newsround presenter and allotmenteer De-Graft Mensah and garden designer Lucy Chamberlain are co-creating a Beautiful Border that incorporates individual one-metre spaces to inspire home growing and sustainable gardening. De-Graft is a schools ambassador for this year's Health for Life Schools Wheelbarrow Competition, inspiring

children from local schools to Make a Meal Matter by growing their own ingredients for a trolley display.

2026 marks ten years of APL Avenue at BBC Gardeners' World Live, the Association of Professional Landscapers' showcase of technical skill, attention to detail and creative use of materials. Three APL member companies will be creating stylish outdoor living spaces, each with its own aesthetic. Umbrellas by Dave Hodson Gardens from Usk, Monmouthshire is inspired by the bold colour scheme and bittersweet love story of cult 60s French film, The Umbrellas of Cherbourg. The Constant Companion by TJ Kennedy Garden and Landscape Design from Rutland, Leicestershire celebrates the relationship between human and garden, man and nature. This interactive garden features visual and audio elements, with framed viewpoints that highlight different aspects, each with its own characteristics. The Mill Ruins by Gunns & Roses Ltd from Spalding, Lincolnshire, designed by David Gisbourne from 3DG in Bury, Greater Manchester is inspired by the sites of old Lancashire mills, now reclaimed by nature. At the APL Design Clinic, visitors can get expert garden planning advice and support.

Grill fans will love the Smoke & Fire Zone, a vibrant new live-fire cooking and outdoor living experience from the award-winning Smoke & Fire Festival, the UK's largest BBQ and outdoor cooking event. Featuring demonstrations, a hands-on BBQ School, artisan producers, and the stylish Eat.Heat. Retreat Garden, this exciting new feature celebrates gardens as social spaces for cooking, dining and relaxing, inspiring visitors to make more of their outdoor spaces throughout the year.

Ashley Peniston-Bird, Founder and Organiser of Smoke & Fire Festival, said: "We're incredibly proud to be working with BBC Gardeners' World Live, showing that gardens are great places to gather, cook and spend real time together. Cooking over fire brings people closer, and we hope visitors leave the Smoke & Fire Zone feeling inspired and confident to light the grill and start using their garden as an extension of their home."

Also new for 2026 is the QVC Outdoor Living Stage, offering exciting lifestyle inspiration. Emma Jo Real-Davies and Michael Perry (Mr Plant Geek) will be sharing their plant knowledge while Ninja bring their outdoor cooking know-how. Award-winning designers Kitti Kovacs and Anouska Lancaster will have styling tips, and Neom will be talking summer scent and candlelight. Floral bouquet workshops hosted by Jordan Weston (The Bearded Botanist) are new too. Music fans will enjoy BBC Introducing ... at BBC Gardeners' World Live, a new showcase for local music talent, and there are Bandstand buskers too.

At the BBC Gardeners' World Live Floral Marquee, sponsored by L&G, this year's new additions are a bookshop with author signings, a centenary display by H.W. Hyde and Son

plant nursery, and an immersive celebration of mushrooms by gourmet growers, Caley Brothers. Back this year is the Let's Talk Plants stage hosted by David Hurrion, offering expert plant advice from the BBC Gardeners' World presenters and stage sponsor, Hillier. The Hot Off The Potting Bench gallery features brand new plants, jostling for the coveted Peter Seabrook Award for Best New Plant and the British Orchid Council International Orchid Show features spectacular displays and expert advice from specialist societies and nurseries. Head for the Plant Experts' advice desk hosted by Lucy Chamberlain and Saul Walker to solve your plant problem or join a guided tour. Pot Swap by Wool-Pots returns, exchanging plastic pots from plants bought at the show for a sustainable alternative.

Award-winning design and landscaping teams will be creating large-scale, wow-factor Show Gardens, packed with inspiring ideas for visitors to take home. The Making Change Happen Garden by Rachel Sporborg and The Nelson Trust will showcase the charity's dedication to helping women facing addiction, mental health challenges and other complex needs which can result in being swept up in the criminal justice system. The garden will be relocated to HMP Eastwood Park, Gloucestershire after the event, opening up pathways for women to learn new skills, gain respite and recover from their experiences. The Heart of the Jungle by husband-and-wife designers Jonathan and Briony Dakic will be an exotic urban garden, and Derby College will create The Artist's Garden, blending artistic expression with the practical charm of a traditional country cottage garden.

Equally impressive are the mid-sized Showcase Gardens. Trains in the Garden by Andrew Christie celebrates 30 years of voluntary railway service and a life-long interest in trains and railways. Dark Side of the Bloom is a nostalgic tribute to teenage years by Anthony Massie. The Folklorians Garden by Kate Patrick (The Messy Allotmenteer) and Mario Milligan-Nagy from Garradh Landscape & Design explores ancient stories about plants. Greenhouse Noir by Matt Bettison is a contemporary, immersive retreat that highlights how even a modest footprint can become a striking, modern sanctuary. Sensed, Not Seen by Rebecca Williams for sight loss support charity Support4Sight is a sensory garden designed for blind and visually impaired visitors to connect deeply with nature. The Power of Pink Plants by Samantha Stringer celebrates the joy of pink plants.

There are 30 Beautiful Borders this year, all inspired by the theme, 'Once Upon a Time', including a collection from WRAGs, the Work and Retrain as a Gardener scheme.

At the BBC Gardeners' World Live Theatre, Nicki Chapman and BBC Gardeners' World Magazine's Content Director, Kevin Smith, welcome Monty Don, Adam Frost and Frances Tophill for entertaining summer gardening chat and advice, with Professor Alice Roberts discussing The Evolution Garden. Social

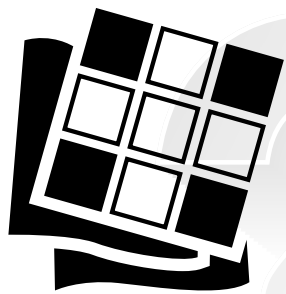
media gardening personality Jonny Hincks (Gardenwithjonny) joins Theatre sponsor, British Garden Centres, on Saturday and Sunday. This year's theatre will be a more intimate experience with unallocated seating and tickets priced at just £5, or free of charge for British Garden Centres sessions.

Adam Frost's Tasting Table returns with cooking demonstrations, summer food inspiration and guests from BBC Gardeners' World Magazine and Good Food. Guests include James Martin, Si King, Lisa Faulkner, Barney Desmazery and Perry Wakeman (Rennet & Rind, the award-winning cheesemongers). This year's Tasting Table sessions include produce from the Packington Estate in Warwickshire, the new home of BBC Gardeners' World Live from 2027.

Got a garden shopping list? There's plant, garden and outdoor lifestyle shopping throughout, with a Plant Crèche and car collection service available for heavier items. For indoor gardeners, the Green Rooms houseplant studio hosted by Sarah Gerrard-Jones (@theplantrescuer) and Ian Morrison (Liquid Gold Leaf) offers plants, pots and accessories, expert advice and workshops. For families, The Conservation Volunteers will be hosting hands-on children's activities, including bug hotel building, a scavenger hunt and seed planting.

Lucy Ashworth, Event Director at Immediate Live, organisers of BBC Gardeners' World events, said: "Visitors can look forward to some fantastic days out at BBC Gardeners' World Live with so much to see, do and learn – not to mention some delicious food and drink at Good Food Show Summer and the exciting new Smoke & Fire Zone. Professor Alice Roberts and David Stevens' extraordinary evolution landscape is sure to get people talking while highlighting the vital work of BIFoR, monitoring the effects of climate change. We celebrate ten years of APL Avenue this year and the BBC Gardeners' World Make a Metre Matter campaign is back, with De-Graft Mensah and Lucy Chamberlain inspiring us to grow more of our own food and attract more wildlife into our gardens, no matter how small. With new plants, stages, workshops and displays alongside favourite features like the wonderful Show Gardens, Borders and Floral Marquee, there's something for everyone to enjoy."

Tickets for BBC Gardeners' World Live at the NEC Birmingham (18-21 June) are on sale now at www.bbcgardenersworldlive.com. BBC Gardeners' World Magazine subscribers enjoy discounted tickets and access to the Subscriber Lounge for up to three friends, with exclusive talks, extra seating and refreshments. All tickets include entry to Good Food Show Summer, featuring kitchen talks, stages and demonstrations, and food and drink tasting and shopping. This year's guests include James Martin, Si King, Lisa Faulkner, The Fletchers (Fletchers' Family Farm), and Dr. Chintal Patel.



Puzzle Page

ACROSS

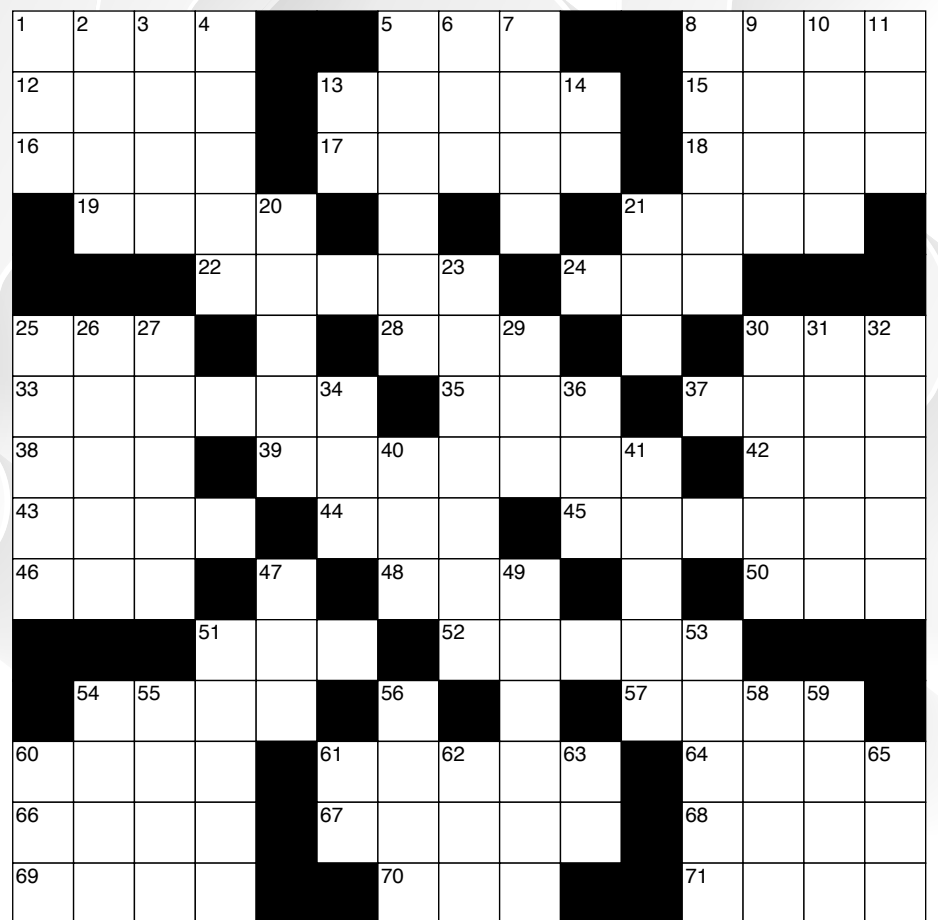
- 1 Group of nations
5 Small
8 Curtsey's
12 Elegant
13 Break out of egg
15 Wading bird
16 African nation
17 Western state
18 What you do for the judge
19 Treat with contempt
21 Stair
22 Kangaroo bear
24 Car speed
25 Kimono sash
28 Wing
30 Metric weight unit
33 Cloth hat that is fastened with ribbons
35 Scientist's office
37 France & Germany river
38 Epoch
39 Admit (2 wds.)
42 Killed in action
43 Mail
44 Milk maker
45 Looms
46 Bard's before
48 Ruby
50 Distress call
51 Fall mo.
52 More often than weekly
54 Cuts off "in the bud"

- 57 Holler
60 Secure
61 Crick
64 Electron, for example
66 Negative (prefix)
67 Pallid
68 Canal
69 Fossile fuel
70 Scriptural your
71 Structure used by a bird to lay eggs and rear young

DOWN

- 1 Tempo
2 Soil
3 Capital of Norway
4 Newly hatched bird
5 Swaying walk
6 Airport abbr.
7 Resound
8 Act or fact of being born
9 Off-Broadway award
10 Bunch of hay
11 Compass point
13 Hello
14 Santa's laugh
20 Divided nation
21 Observe secretly
23 Accepted
25 Heavy-set
26 Hole maker

- 27 Sappy
29 Rule
30 Forces
31 El Qahira
32 Lawn plant
34 Tender loving care
36 Whit
40 Record
41 Stately
47 Large vehicle
49 Boggy
51 Fourth month of the year
53 Asian country
54 Taboo
55 Small particle
56 Quarrel
58 Decoy
59 Superman's Ms. Lane
60 McDonald's "Big ___"
61 Compass point
62 Tree
63 Possessive pronoun
65 Tulle



By Jimmy and Evelyn Johnson - www.qets.com

Word Search

Y S C I T L O O F L I E S N
T P H O B E G U I L E S U O
I O D M M A N R N A T N Y N
C O E J U I P R P E S E D S
I F C T O A C R O F U T R E
L T E E H K A A U R O E A N
P I I L N N E N L I E R H S
M K V B K W D I T V G P L E
O S E I E L R Y N O A A O N
C D A L C T U F U L R O O O
L G I L S H S L T O T Y F X
L N A U R X B B S U U V A R
B H V G L L A Q T S O O R C
Z F C A P R I C E K H B G N

Find the words in the grid. When you are done, the unused letters in the grid will spell out a hidden message. Pick them out from left to right, top line to bottom line. Words can go horizontally, vertically and diagonally in all eight directions.

Absurd
April
Beguile
Caprice
Comical
Complicity
Deceive

Fool
Foolhardy
Frivolous
Fun
Gag
Gullible
Hoax

Joke
Nonsense
Outrageous
Prank
Pretense
Spoof
Stunt



EST. 1966

**SHAWBURY
Vehicle Repairs**

Shawbury Vehicle Repairs
Paint-work Specialists

- Accident repairs carried out
- Quality assured work
- Fast turnaround
- Self preparation work welcome
- Secure compound
- Family run business
- Secure storage compound
- Body kits (fitted)
- Bike parts and repairs
- Insurance work undertaken
- Customised paintwork

Shawbury Vehicle Repairs
Shawbury Lane
Shustoke
Coleshill
Warwickshire
B46 2RP

Tel: 01675 481 143 M: 07739 460 381
Email: shawburysalvage@btinternet.com



New riotous comedy from Coleshill Drama Group

Do you wish to avoid a care home in later life? Whilst members of Coleshill Drama Group do not endorse the consequences of what occurs to the characters in their new production, the results are one way to NOT live out your life in a care or elderly persons' home!

The comedy "Jail Birds", written by Colin Barrow, follows the activities of seven women and a man, who are all inmates at His Majesty's pleasure. The prison governor, officer and nurse complete the cast and have to find ways of dealing with the demands of the inmates. The comedy which ensues does indeed become riotously funny with a finale which no one would guess.

This new production, directed by Debbie Wall, will be staged at Coleshill Town Hall on Thursday 4th, Friday 5th and Saturday 6th June at 7.30pm, and by popular demand a matinee on Saturday at 2.00pm. As usual, there will be a licensed bar available from which to purchase drinks, before and after the play and during the interval, when tea and coffee will also be available. Car parking opposite the Town Hall at Chantry House will be open as usual.

Doors open at 7pm (1.30pm for matinee) and members of the Group await you with a warm welcome. Coleshill Drama Group is now in it's 93rd year and today's members follow the many who have preceded them by providing entertainment to the community of Coleshill and surrounding area. Many weeks of preparation and rehearsal go into every production, and the members' hard work pays off when a good audience laughs loudly and enjoys the performance. If you have never attended, please come along and experience a fun filled evening, whilst enjoying a drink of your choice.

Tickets for "Jail Birds" are priced at £12 (£10 for those under 16 years of age) and are now available from Coleshill Library, Gascoignes of Coleshill, online at www.coleshilldrama.co.uk/ or telephone Sue Wallace on **01675 462674**.

If you want to do the time - Do a crime!



Coleshill Drama Group proudly presents...

Jail Birds

written by Colin Barrow

Thursday 4 June 7:30pm
Friday 5 June 7:30pm
Saturday 6 June 2pm
Saturday 6 June 7:30pm

Performances held at
COLESHILL TOWN HALL

TICKETS £12

Available from www.coleshilldrama.co.uk
Coleshill Library, Gascoignes of Coleshill




READ OUR PAPERS ON THE GO

www.postgroupmidlands.com

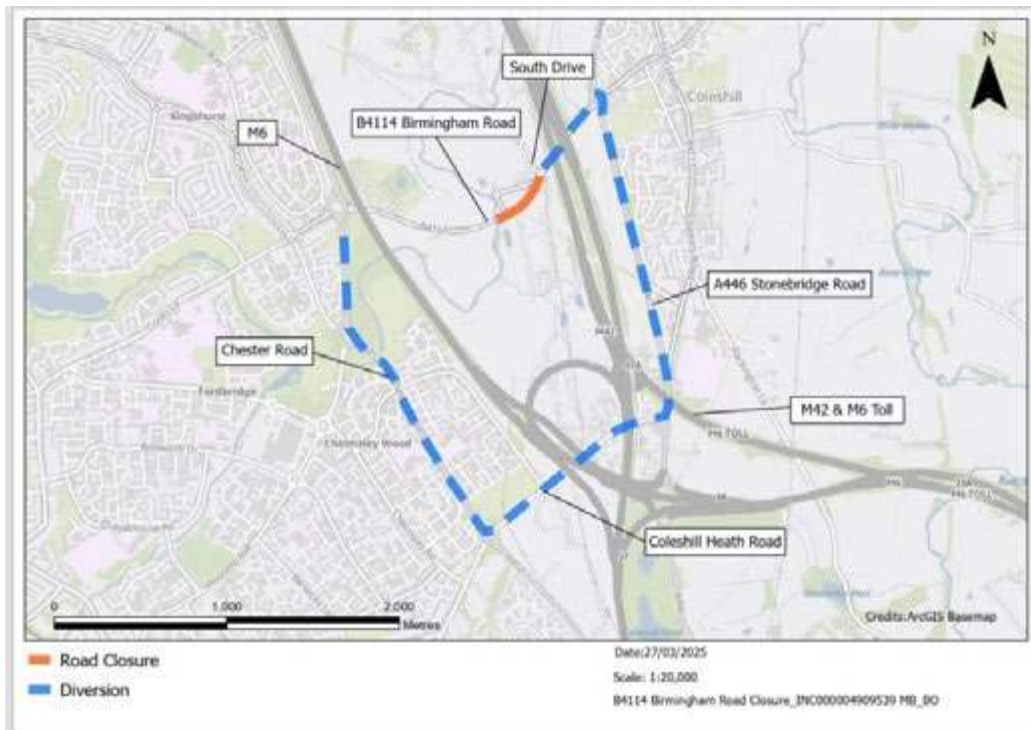



**POST GROUP
MIDLANDS LTD**

Closure of B4114 Birmingham Road, Coleshill

The work we will be completing

As part of the ongoing preparations for the HS2 railway construction, we will be carrying out essential works to construct a concrete wall immediately above the B4114, Birmingham Road, between the two viaducts. To carry out these works safely we will be installing a road closure.



Full closure of the B4114, Birmingham Road:

Start: 6am, Tuesday 5 May 2026

End: 6am, Monday 18 May 2026

Details:

- Our working hours will be from 7am to 6pm each day.
- The road closure will be in place 24/7 for the duration of the works
- Pedestrian and cycle access will be maintained throughout the closure
- Access to Woodlands Cemetery, the car boot sale field and Coleshill Manor Campus will be maintained from A452 Collector Road roundabout.

HS2 Helpdesk

If you would like to find out more about HS2, what it means for the local area and have your questions answered by HS2 and BBV team you can contact us on the below details:

08081 434 434

hs2enquiries@hs2.org.uk

Police Nitrous Oxide Patrols



We are carrying out an operation to tackle the illegal use and sale of nitrous oxide.

Inhaling nitrous oxide carries a range of health risks and is against the law. It is also a significant contributor to antisocial behaviour, and we are increasingly seeing cases of people driving while under its influence – in some instances with fatal consequences.

Officers today have been at the following locations which our followers on a previous facebook thread stated were hot spot areas for nitrous oxide offences in North Warwickshire.

- Hartshill Hayes
- Maud Road Garages
- B4116 layby
- Packington Lane

You can help us.

If you have information about where nitrous oxide is being used (discarded canisters are often a clear sign) or where it is being sold illegally, please report it.

Further patrols are planned and drop a comment below if you know of any further hot spot locations or report online.

Your reports help us plan targeted patrols and focus our efforts where they are most needed.

Officers have also recently charged an individual with possession of nitrous oxide after we found him in an Atherstone industrial estate with a large quantity of the gas. Case number relates 23/N5/13426/26.

warwickshireconnected.com

Know the facts

What is it?

A colourless gas, often called laughing gas, NOS, whips or hippie crack. It is not helium.

How is it misused?

People breathe it in to get a short-lived "high", usually from balloons filled from a canister.

The law

It's illegal in the UK to make, have, buy, or sell it. It's a Class C drug, and penalties can include a fine, a caution on your criminal record, or prison for repeat serious offences.

How is it misused?

People breathe it in to get a short-lived "high", usually from balloons filled from a canister.



ADVERTISE YOUR BUSINESS HERE

For more information on how to advertise please call:

07805 430191

or email:

editor.postgroup@outlook.com



OVER 20 YEARS EXPERIENCE

At Coleshill Windows & Doors Ltd we believe in doing business the right way, by putting you first. That means no hard sales push, fair prices and only the highest standards of work.

- ✓ Windows & Doors
- ✓ Composite Doors
- ✓ Conservatories
- ✓ Equinox Warm Roofs
- ✓ Roofline & GRP Roofs

Tel: 01675 464 661
 Mob: 07789 855655
www.coleshillwindows.uk

The local, family owned business you can trust!



OPEN 6 DAYS A WEEK

0121 789 6549

FAST, RELIABLE, PROFESSIONAL SERVICE WITH NO HIDDEN EXTRAS

- ⊗ 2000+ TYRES IN STOCK
- ⊗ EST OVER 18 YEARS
- ⊗ BRAKES SUPPLY + FIT (CAR & VAN)
- ⊗ PUNCTURE REPAIRS
- ⊗ HUNTER 4 WHEEL ALIGNMENT

Flaxley Tyres

FOR ALL YOUR TYRE NEEDS



Flaxley Alignment Centre

WE OFFER A FREE CHECK ON THE HUNTER ALIGNMENT SYSTEM



flaxleytyres

www.flaxleytyres.co.uk

Unit 1, Imex Business Park, Flaxley Road, Stechford B33 9AL

News from St Clement of Alexandria Green Lane, Castle Bromwich (known locally as St Clements Church)



Mother Teresa: Not all of us can

do great things, but we can do small things with great Love.

Jesus made the ultimate, once-for-all sacrifice by dying on the cross to atone for humanity's sins. Mary stood at the foot of the cross, she must have experienced profound sorrow, a crushing feeling too much to bear, but still she stood there never leaving, as she watched her son die; her trust in God unwavering. Laughter, joy, sorrow and pain are all wrapped up in moments, as we watch our children grow, but without any doubt being a mother is a challenge, however old your child is, but such a joy.

During Lent we celebrated Mothering Sunday to say a huge thank you to our mothers and carers for all they do for us. Sourcing daffodils proved difficult this year, so we've decided to expand our display by planting more ourselves to avoid the same issue next year. "Grow our own" feels like the most practical solution.

On Saturday 28th March we held our Easter Tea and Bonnet parade in memory of Janet Smith. Smiling faces and games of Bingo with jelly and ice cream made for an afternoon of fun and laughter. Judging the bonnets was certainly a challenge as they were all amazing. So much talent; see what you think!



On Saturday 4th April we came together to get the Church ready for Easter Sunday. Preparations for the 8am Sunrise Service and breakfast, transforming the Church with flowers. It was a hive of activity. There can be joy in the simple things and doing it together makes it very special.

Our next event will be Saturday 16th May with a Quiz starting at 4pm including a fish and chip supper (already provisionally booked). Tickets will be on sale shortly at £8.50 each. You can find further details on our Facebook page and in our noticeboards or just give the Church a ring if interested.

We were delighted to welcome Smith Wood Academy to St Clements at the end of April. Welcoming children from local schools is something we have been proud to do as a Church for many years. Their young voices and laughter always create a wonderful "feel-good" atmosphere, whatever the weather.

Our annual trip this year will take place on Saturday 18th July to Gloucester Cathedral, with Johnson's Coach booked. This outing follows the wonderful example set by Janet Smith, who for many years brought such care and dedication to organising our trips. As a former Guider, she had a real gift for making every event, large or small, run smoothly. We hope to honour her memory and continue her tradition in a way that would make her proud.

Last year's visit to Weston was certainly memorable, not least for being one of the hottest days of the year! This time, we're hoping for dry weather—just perhaps a little less heat.

We were pleased to welcome some new faces to our Forget Me Not Memory Café on the 26th March which we hold on the 2nd and 4th Thursday of each month from 1pm to 2.30 pm. Bird Bingo a new game for us proved a great success. If you are a carer or have someone with memory loss then just come along to St Clements. You will be most welcome and the tea, coffee and cake isn't so bad either!

Our Mary Bridgeman Tea and Coffee Lounge will be inspected by Environmental Health Solihull on 20th April, as part of the routine two-yearly review. At our last inspection, we were awarded a Level 5 rating. All our volunteers hold current Level 2 Food Hygiene certificates, and our records are fully up to date. We are hopeful of another positive outcome.

Members of St Clements will be supporting Castle Bromwich Parish Council with Party in the Park on Saturday 27th June, all details are on their website.

If you want to more about St Clement's, our Services, how to arrange a baptism or wedding, our work in the community or events, you can get in touch in the usual way by:

We would love to hear from you. Please get in touch for more information:

Phone: 0121 274 7120

A Church Near You:

www.achurchnearyou.com/church/7248/

Church Website: www.stclementschurchcb.co.uk

Facebook: www.facebook.com/stclementschurchcastlebromwich

Email: office@stclementschurchcb.co.uk

KAVANAGH'S
 KITCHENS & BATHROOMS

The Complete Service

At Kavanagh's Kitchens and Bathrooms, we offer a comprehensive design and installation service with a 3 year warranty.

Partnerships with premium brands, including...



Visit our large kitchen & bathroom showroom established since 1989

Tel: 0121 604 6464
 32 East Meadway, Kitts Green, Birmingham, B33 0AP

www.kavsbathrooms.co.uk

Orton
Installations

Windows | Doors | Conservatories



Windows (UPVC & Aluminium)
 Doors (including Bi-Fold & Composite)
 Conservatories

Garage Doors
 Roof Lanterns
 Domestic & Commercial Work

07732 561 569
 E matthew_taylor10@sky.com

NEED EXTRA STORAGE?

Store it from only

£20

per week



www.absoluteselfstorage.co.uk
 07704 955750 | 01675 464446 | hires@absoluteselfstorage.co.uk
 Jubilee Industrial Estate, Gorsey Lane, Coleshill B46 1JU



Interiors & Decorating



Platinum Hints and Tips

Spring is one of the most inspiring times of year to refresh your home. As the days grow longer and natural light floods in, it becomes the perfect opportunity to rethink your interior design, introduce lighter colours, and embrace a renewed sense of space and comfort. In the UK, where winter interiors often lean towards darker tones and heavier textures, spring invites a shift towards brightness, freshness, and subtle vibrancy. Here are some thoughtful and practical suggestions for interior design, painting, and decorating to help you make the most of the season.

Embrace a Lighter Colour Palette

One of the simplest yet most effective ways to transform your home for spring is through colour. Swap out deep winter hues for softer, lighter shades. Think warm whites, soft creams, pale greys, and gentle pastels such as sage green, blush pink, or powder blue. These tones reflect natural light beautifully and create an airy, open feel.

If you are considering repainting, feature walls in muted spring shades can add character without overwhelming the room. Alternatively, colour drenching—painting walls, skirting boards, and even ceilings in the same soft tone—can create a cohesive and calming look that feels modern and fresh.

Refresh Walls with Paint or Wallpaper

Spring is an ideal time to tackle decorating projects like repainting or adding wallpaper. If your walls have taken on wear and tear over winter, a fresh coat of paint can instantly revitalise a room. Opt for durable, washable paints, especially in high-traffic areas such as hallways and kitchens.

Wallpaper is also making a strong comeback in UK interiors. Floral patterns, botanical prints, and nature-inspired designs are particularly suited to spring. Consider using wallpaper on a single accent wall or in smaller spaces like a downstairs loo or alcove to introduce pattern without overwhelming the space.

Maximise Natural Light

With longer daylight hours, it is important to make the most of natural light. Start by replacing heavy curtains with lighter fabrics such as linen or cotton. Sheer curtains can soften the light while still allowing it to fill the room.

You might also consider rearranging furniture to ensure windows are not blocked. Mirrors are another effective tool; placing a mirror opposite or adjacent to a window can reflect light and make a room feel brighter and more spacious.

Incorporate Natural Materials

Spring interiors benefit greatly from the inclusion of natural materials. Wood, rattan, wicker, and stone can all help bring a sense of the outdoors inside. Consider swapping out accessories such as lampshades, baskets, or side tables for pieces made from these materials.

Textiles also play a role. Replace heavier winter throws and cushions with lighter fabrics like cotton or linen. Subtle textures, such as waffle weaves or embroidered details, can add interest without adding visual weight.

Introduce Greenery and Florals

Nothing says spring quite like fresh greenery and flowers. House-plants not only enhance the aesthetic of a room but can also improve air quality and boost mood. Easy-to-care-for plants such as snake plants, pothos, or peace lilies are ideal for beginners.

Fresh flowers, whether from a local market or your own garden, can be used to create simple yet striking displays. Tulips, daffodils, and hyacinths are classic spring choices in the UK. Even a small vase on a bedside table or kitchen counter can make a noticeable difference.

Update Soft Furnishings

Soft furnishings offer a quick and cost-effective way to update your interiors without committing to major changes. Swap out cushion covers, throws, and rugs to reflect the season. Opt for lighter colours, playful patterns, or subtle stripes. Spring is also a good time to reassess your bedding. Lighter duvets, breathable sheets, and fresh pillowcases can improve comfort as temperatures begin to rise. Consider layering textures to maintain cosiness while keeping things light.

Declutter and Reorganise

Spring cleaning is more than just a tradition—it is an opportunity to reassess your space. De-cluttering can have a significant impact on how your home feels. Remove items that no longer serve a purpose and organise belongings to create a sense of order.

Storage solutions such as baskets, shelving units, and multifunctional furniture can

help maintain a tidy environment. A well-organised space not only looks better but also contributes to a calmer, more relaxed atmosphere.

Refresh Outdoor-Indoor Connections

In many UK homes, the transition between indoor and outdoor spaces becomes more important in spring. If you have a garden, patio, or balcony, consider how your interior design can complement it. Use similar colour schemes or materials to create a seamless flow.

Position seating near windows or doors that open to outdoor areas. Adding plants near these spaces can blur the boundary between inside and out, enhancing the overall sense of freshness.

Consider Subtle Decorative Updates

Small decorative changes can have a big impact. Swap out artwork for pieces that reflect spring themes, such as landscapes, florals, or abstract designs in lighter tones. Change lampshades, update photo frames, or introduce new decorative objects like vases or ceramics.

Even scent can play a role in interior design. Candles or diffusers with fragrances such as citrus, lavender, or fresh linen can enhance the seasonal atmosphere.

Focus on Sustainable Choices

Sustainability is increasingly important in UK homes. When updating your interiors, consider eco-friendly options. Choose paints with low volatile organic compounds (VOCs), invest in quality

pieces that will last, and consider upcycling or repurposing existing furniture.

Shopping locally or supporting independent makers can also reduce environmental impact while adding unique character to your home.

Plan Larger Projects Thoughtfully

If you are considering more significant renovations, such as updating a kitchen or bathroom, spring can be a good time to start planning. Focus on timeless designs with a nod to seasonal freshness—light cabinetry, natural stone surfaces, and simple, elegant fixtures.

However, it is important to balance trends with longevity. While spring-inspired updates can refresh your home, choosing designs that will remain appealing throughout the year ensures your efforts are worthwhile.

Final Thoughts

Spring offers a natural opportunity to breathe new life into your home. By embracing lighter colours, natural materials, and thoughtful decorative changes, you can create a space that feels fresh, welcoming, and aligned with the season.

Whether you undertake a full redecoration or simply update a few key elements, even small changes can make a meaningful difference.

Ultimately, the goal is to create an environment that reflects both the energy of spring and your personal style—a place where you can enjoy the brighter days ahead in comfort and harmony.



PLATINUM
INTERIOR DECORATING

Contact Jim or Clare
for a free quote on:



0121 747 7202



**07814 566657
or 07792 508819**

**We are a husband and wife
painting and decorating team**

**All aspects of domestic and small
commercial projects undertaken**

- Free written quotes
- Friendly, clean and reliable service
- Advice available on colour matching



info@platinuminteriordecorating.co.uk



www.platinuminteriordecorating.co.uk



YARDLEY MEMORIALS

We pride ourselves on personal service and customer care

Yardley memorials offers a personal, sympathetic and professional service when you are faced with the painful and emotional task of choosing a suitable memorial for your loved one.



Call for a free brochure
Tel 0121 706 2473

200 letters
free on new
headstones



BRAMM

120 letters free on new Cremation stones (Birmingham and Solihull Cemeteries only)

Email yardleymemorials@gmail.com for any other inquiries

453 Stockfield Road, South Yardley, Birmingham, B25 8JH

Open Monday to Thursday 9am-4.30pm,
Friday 9am-3.30pm, Saturday 12pm-4pm

Yardley Memorials are also based
inside Widney Manor Cemetery
for new memorials and flowers

EST 1900
GASCOIGNES
of Coleshill
FAMILY FUNERAL DIRECTORS

1900
2022

OUR
FAMILY
HELPING
YOURS



Independent Family Funeral Directors

Offering a complete, dignified and caring service to the community for four generations.

01675 462294

24 hour service | Private Chapels of Rest
coleshill@gascoignesfunerals.com

100 High Street, Coleshill B46 3BL
www.gascoignesfunerals.com

Prepayment Plans Available

Proud member of the
M G Evans Family



St Joseph's Care Home
Dementia, residential and respite care

Father
Hudson's
Caritas

How home feels

Heading away on holiday? Want to know a loved one is being cared for?

Our professional and dedicated team offer personalised respite care in the beautiful Warwickshire countryside. We provide delicious home cooked food, with a salon and chapel onsite.

St Joseph's provides a first-class service along with a level of care for their residents, that is second to none.

Carehome.co.uk review

9.8



Contact our Manager Shelley

01675 434559 or 07341 730122

shelleyperryman@fatherhudsons.org.uk

<https://stjosephscarehome.co.uk/>



Police News



A Crackdown on HGV Crime



An ongoing policing initiative has seen crime drop dramatically at Corley Services in the last two years.

Comparing 2023 to 2025, reported crime is down by around 60% across all motorway services in Warwickshire. But at Corley Services, there's been an even bigger improvement.

After HGV-related crimes in particular were highlighted, we took steps to tackle it. And thanks to these efforts, there's been a drop of 70% from 109 offences in 2024 to just 33 last year.

It's now the lowest level it's been in years with usually anywhere between one and four offences each month.

We had a slight spike in November, which we think was opportunistic offenders looking for valuables before Christmas, but the overall trend is still strongly down from where it's been in the past.

This shows the measures put in place, along with ongoing partnership working, are making a real and lasting difference at the site. And we're not stopping here - we'll keep driving crime down and keeping the area safe for everyone.

Operations

OP YARD –

What It Is and Why It Matters

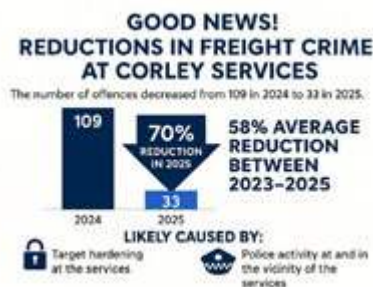
Operation Yard is a targeted policing initiative focused on reducing HGV-related crime at motorway service stations and freight hubs. These locations are essential rest points for drivers, but they're also vulnerable to offences such as fuel theft, load interference, vehicle break-ins, and organised criminal activity.

The purpose of Operation Yard is to:

- Protect HGV drivers and their cargo.
- Identify and disrupt offenders operating around service stations.
- Increase visibility and reassurance in high-risk areas.
- Gather intelligence linked to freight crime and organised networks.
- Work with partner agencies and service-station operators to improve safety.

Officers conduct patrols, speak with drivers, check vehicles linked to intelligence, and monitor behaviour around the services to spot early signs of

criminal activity.



DOB EM IN

07/04/2026 Officers have recovered a stolen bike this afternoon from Chelmsley Wood, following a theft on Blythe Road, Coleshill around 16:30hrs.

Following a short pursuit, officers have located the motorcycle abandoned in a recreation ground off Coleshill Heath Road around 16:52hrs.

The suspects are believed to have been travelling on three black motorcycles: two sports bikes and one moped. None of the bikes were displaying registration plates and we believe all riders & passengers were wearing balaclavas.



E-Scoters:-

You can ride a privately owned e-bike in public without a licence if you are over fourteen, but it must meet certain requirements. They must have a maximum power output of 250 watts and a maximum speed of 15.5mph. They also must be pedal assisted, meaning you must pedal for the motor to kick in, rather than simply pressing a button or twisting a throttle. If they do not meet these criteria, they are classed as a motorbike or moped so must be registered, taxed, and insured, while riders must hold a licence or wear a helmet. Police have powers to seize e-scooters and e-bikes that do not comply under Section 1658A of the Road Traffic Act 1988, having a vehicle on the road without insurance.

The offence can result in a criminal prosecution, typically attracting six penalty points when dealt with in court, however it is dealt with simply by way of seizure.

As many may have experienced within the local community, the rise in Anti-social behaviour involving a large number of motorbikes.

Most of these bikes are driven illegally without insurance and pose a danger to the community. Therefore, we need to encourage the community to inform of us of these concerns with as much information as possible so we can get these bikes off the streets and crushed.

We can also issue the driver a Section 59 which grants us the powers to seize and remove vehicles that are being used to cause alarm, distress, or annoyance, careless or inconsiderate manner and off-road driving, this will last for 12 months. A section 59 also applies to both the driver and the vehicle so even if someone else drives the same vehicle in an anti-social manner, we can still enforce it.

To report an incident regarding a ASB Bike or vehicle, please call 101 or you can make an online report via our Warwickshire Police website. You can also go on the DOB EM IN website, which is www.warwickshire.gov.uk/dobemin.



Bobbies on the Beat Atherstone

04/04/2026 Late night to early morning patrols have been carried out by PCSO Scott today around residential areas of Atherstone Town Centre to combat car keyless thefts.

We still have free faraday pouches available kindly donated by North Warwickshire Community Safety Team.

If you are a resident of North Warwickshire and would like a free pouch, please email the team with your name and address.

nwe@snt.warwickshire.police.uk



On the 09/04/2026 Late night to early morning patrols have continued today by town centre PCSO 6162 Scott covering residential areas to deter car keyless burglaries. The local golf course and sports club were also patrolled due to a burglary at the sports club this week where a tractor was stolen.

We still have free faraday pouches kindly funded by North Warwickshire Borough Council Community Safety Team. If you are a resident of North Warwickshire and would like a pouch, please email your name and address.

nwe.snt@warwickshire.police.uk

Get Connected with Warwickshire Police

Atherstone and Coleshill SNT have been promoting Warwickshire Connected.

Get connected with what is happening in your local area, keep up to date and get involved in shaping what goes on where you live or work. Warwickshire Connected is a free messaging service brought to you by Warwickshire Police where you decide when and how you hear about the issues that matter most to you, whether that be getting regular crime updates, the latest information on ongoing incidents and emergencies or learning more about what your local police are doing. This is also the place where you can get involved in helping to make your local area a safer place, tell us what police should be doing in your area, shape the initiatives that help to keep people and property safe and tell us what matters are causing your communities harm. Follow the link to sign up today: www.warwickshireconnected.com



Also please follow our Facebook page where we put updates of what Atherstone and Coleshill Safer Neighbourhood Teams get up to.

There are updates on going incidents, appeals and much more. We will be posting about upcoming events also so please take a look, see when they are and come along. We like to be as accessible as possible so using our social media page is a great way for us to communicate with our communities.



St Mary and St Margaret Church
 Castle Bromwich
Faith.Youth.Eco.Heritage.Community



Whats On

The Coffee Pot Bereavement Group

Monday 11th May
1.30 - 3pm

Community Hall

Everyone is welcome for refreshments and conversation, at this welcoming support group that provides help and companionship for anyone experiencing difficult times.

Wednesday Drop In
13th May

10.00 - 11.30am Community Hall
 Join us for a cuppa and a chat - everyone is welcome!

Soup & a Roll Lunch
Wednesday 13th May

12.00 - 1.30pm Community Hall
 Join us for our monthly Soup & a Roll Lunch for a £1.50 donation, on every 2nd Wednesday of the month following our Family Service and Wednesday Drop In

Mothers Union Friendship Afternoon

Wednesday 20th May

1.30- 3pm Community Hall
 Join us for an afternoon of fellowship & fun with a cuppa, a piece of cake & a chat!
 All are welcome to join us - we would love to see you

Date for the Diary
Saturday 4th July

Summer Fete
12 - 3pm



Upcoming Services

Sunday 3rd May

11am All Age Communion with Baptism

Sunday 10th May

9.30am Parish Communion & Messy Worship for families

Wednesday 13th May

9.30am Family Communion

Sunday 17th May

11am Sung Eucharist (Church)
 Cafe Worship (Community Hall)

Sunday 24th May

Pentecost

9.30am Parish Communion & Messy Worship for families

Sunday 31st May

9.30am All Age Communion



Official Church FB Page

facebook.com/
 stmaryandstmargarechurch

Church & Community Hall Group

facebook.com/groups/106452
 275854

Community Hall Page

facebook.com/stmaryandstma
 rgaretcommunityhall



Or visit our website

www.stmaryandstmargaret.co.uk

PCC Funded Projects Help Reduce Harm and Prevent Crime Countywide

Communities across Warwickshire have seen real benefits from Police and Crime Commissioner grant funding over the past year.

With investment supporting crime prevention, safeguarding and early intervention projects countywide, PCC funded organisations have played a vital role in delivering initiatives which are contributing towards a safer Warwickshire for all.

From protecting vulnerable people and reducing reoffending to empowering young people and strengthening community safety, £275,523.97 of funding was shared across 27 projects through the scheme which ran from April 2025 to March 2026.

Highlights from the year include:

- Futures Unlocked, Arts Uplift, The Parenting Project & Cranstoun and Veterans Contact Point have helped people turn away from crime and reoffending, allowing them to effectively reintegrate into society
- Projects delivered by Young People First, Aspire in Arts, You Can Flourish, Bradby Club and Warwickshire Crimebeat provided safe spaces, trusted adults and positive activities for thousands of young people. Outcomes included reduced anti-social behaviour, improved wellbeing, increased confidence and successful re-engagement into education, training or employment
- Services delivered by RoSA, PEGS, The Esther Project, Warwickshire Counselling Service and Mediation and Community Support have improved emotional wellbeing, increased safety

and helped people to manage risk more effectively. Many participants reported greater confidence, reduced isolation and improved relationships as a result of these interventions

- Neighbourhood Watch initiatives across North Warwickshire and Warwick District have continued to play a vital role in reducing fear of crime and educating residents about crime prevention techniques
- RoSPA and South Warwickshire Advanced Riders have delivered training to motorcyclists to become safer riders and reduce the risk of collisions involving motorbikes on the county's roads

More highlights from some of the funded projects in 2025/26 are contained in the infographic. Additional details about all of the initiatives funded can be found on our 2025/26 grants web page.

Reflecting on the last year of projects funded, Police and Crime Commissioner Philip Seccombe said: "It is a great honour to see the range of activities that have been delivered this last year from my annual grants scheme.

"I would like to thank each of the services and all of those working and volunteering in them for the difference they have been making to lives across the county in the last 12 months.

"I look forward to seeing how the services funded in the 2026/27 scheme can build on these great achievements to continue to deliver for communities in Warwickshire."

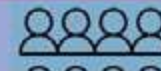
Details of the 2026/27 grant scheme and the projects this will be funding are on our grants page.

PCC-Funded Grant Project Highlights 2025/2026

From April 2025 to March 2026, the PCC provided £275,523.97 to local organisations to deliver projects which made Warwickshire a safer place for all. These are just some of the outcomes from these projects...

7,600+ young people directly engaged with

You Can Flourish delivered targeted early intervention support to 15 vulnerable girls



2,400

students in the Young High Sheriff Programme, delivering crime and safety projects



4,100

secondary school students received Loudmouth's theatre based inputs on VAWG, domestic abuse, hate crime and exploitation

Bradby Club welcomed 350 young people through their doors, with inputs on ASB, county lines and more

125

young people engaged by Young People First, with reductions in their ASB

RoSA delivered counselling to young victims, focused on boosting confidence and self-worth

Young People First supported vulnerable young people through arts and creative projects

Aspire In Arts involved 34 young people in making short films and podcasts to raise awareness of ASB, county lines and more



5 young people found work during Aspire In Arts' sessions for young people not in education or work

2,000+ adults supported to reduce risk

Warwickshire Retail Crime Initiative visited 455 businesses in Nuneaton, with 1551 engagements countywide



Neighbourhood Watch shared crime prevention advice at 80 public events in North Warwickshire and Warwick District

Sycamore Counselling trained 50 people in their anger awareness course to recognise triggers and reduce escalation



MACS delivered Conflict Coaching to 219 individuals to help them gain skills in effective communication and negotiation

Parental Education Growth Support increased knowledge and confidence in all professionals trained to recognise the signs of child to parent abuse



RoSPA delivered 186 on-road 1:1 sessions, with 12 formal skills courses attended by 78 members

Rugby Street Pastors held 1,900 meaningful conversations in patrols over weekend evenings and after school



Leamington Street Pastors continued regular patrols providing welfare, reassurance and early intervention at night

Veteran's Contact Point supported 186 veterans and 87 dependants through peer support, wellbeing activities and practical assistance

Providing help to vulnerable adults

The Esther Project combined therapeutic support, mentoring and wellbeing activities to help women reduce the risk of future vulnerability or involvement in harmful behaviours.

Futures Unlocked successfully concluded work with 30 ex-offenders, supporting them with accommodation, drug and alcohol counselling, education, training, employment, family matters and more



Together at Fred Winter Centre hosted "Soup and Social" sessions, with meals prepared by trained volunteers with lived experience of homelessness.



Parenting Project & Cranstoun are seeing improvements in wellbeing of parents in the criminal justice system, aiming to prevent reoffending

Helping Hands ran Walking Football for 10 men each week to provide them with purpose, boost fitness levels and develop new friendships



Arts Uplift increased engagement with probation orders, reducing likelihood of reoffending, through film making, song writing and pottery



ADVERTISE YOUR BUSINESS HERE

For more information
on how to advertise in any
of our titles please call:

07805 430191 or

email: editor.postgroup@outlook.com

FLOWERS

Landscape Gardening & Block Paving Specialists



- Block Paving
- Porcelain paving
- Resin Bond driveways
- Tarmac
- Slabbing
- Drive Repairs
- Turfing
- Grass Cutting
- Fencing
- In-print concrete driveways
- Specialists in Natural stone/sandstone
- Garden Walls
- Garden Clearances
- Rubbish Removals
- Hedge Cutting
- Tree Felling
- Trees Lopped
- Trees Pruning

ALL WORK IS GUARANTEED & CARRIED OUT BY FULLY INSURED WORKMEN



Call for a FREE no obligation quote

T. 0121 770 0362 M. 07773 503816

flowers-landscaping.co.uk



Puzzle Page Solutions



Solution:

1	B	L	O	C		5	W	E	E		8	B	O	W	S				
12	P	O	S	H		13	H	A	T	C	H		15	I	B	I	S		
16	M	A	L	I		17	I	D	A	H	O		18	R	I	S	E		
	19	M	O	C	K		20	D					21	S	T	E	P		
			22	K	O	A	L		23	A			24	M	P	H			
25	O	B	I		26	R		28	E	L	L		30	M	C	G			
33	B	O	N	N	E		34	T		35	L	A	B		37	S	A	A	R
38	E	R	A		39	A	L	L	O	W	I		41	N		42	K	I	A
43	S	E	N	D		44	C	O	W			45	T	O	W	E	R	S	
46	E	R	E		47	B		48	G	E	M		49	B		50	S	O	S
			51	A	U	G		52	D	A	I	L		53					
	54	N	I	P	S			56	S				57	Y	E	L	L		
60	M	O	O	R		61	S	P	A	S	M		64	M	U	O	N		
66	A	N	T	I		67	W	A	S	H	Y		68	E	R	I	E		
69	C	O	A	L		70	T	H	Y				71	N	E	S	T		

Y	S	C	I	T	L	O	O	F	L	I	E	S	N
T	P	H	O	B	E	G	U	I	L	E	S	U	O
I	O	D	M	M	A	N	R	N	A	T	N	Y	N
C	O	E	J	U	I	P	R	P	E	S	E	D	S
I	F	C	T	O	A	C	R	O	F	U	T	R	E
L	T	E	H	K	A	A	U	R	O	E	A	N	
P	I	I	L	N	N	E	N	L	I	E	R	H	S
M	K	V	B	K	W	D	I	T	V	G	P	L	E
O	S	E	I	E	L	R	Y	N	O	A	A	O	N
C	D	A	L	C	T	U	F	U	L	R	O	O	O
L	G	I	L	S	H	S	L	T	O	T	Y	F	X
L	N	A	U	R	X	B	B	S	U	U	V	A	R
B	H	V	G	L	L	A	Q	T	S	O	O	R	C
Z	F	C	A	P	R	I	C	E	K	H	B	G	N

Hidden message:
IT IS HUMAN NATURE TO THINK WISELY AND ACT FOOLISHLY

By Anatole France



SHARE A STORY

contact:
serena.postgroup@outlook.com



LOCAL SERVICES



GODWOOD GLASS & GLAZING
Est 1982

Broken Glass Replaced
Broken or Misted Double Glazed Units
UPVC & Aluminium Window Repairs
Handles & Hinges Replaced
Window & Door Locks Fitted
All Types of Glass Fitted
No Job Too Small

FOR A FREE QUOTE CALL

Call 07787 804153 and I will call you straight back
Your Local Castle Bromwich Glazier

Xtreme Tree Care

- Crown Thinning and Reduction
- Felling and Dismantling
- Pruning and Shaping
- Hedge Trimming and Removal
- Specialist Stump Removal

Fully Insured
All Staff Fully Qualified
20 Years Experience

For a free quotation from your local Tree Surgeon call
07951 332 401

11 Shawbury Cottages, Pump Lane, Shustoke, Coleshill, B46 2RW
xtreemtreecare@aol.co.uk

facebook

PLATINUM
INTERIOR DECORATING

Contact Jim or Clare for a free quote on:
0121 747 7202
07814 566657 or 07792 508819

We are a husband and wife painting and decorating team

All aspects of domestic and small commercial projects undertaken

- Free written quotes
- Friendly, clean and reliable service
- Advice available on colour matching

info@platinuminteriordecorating.co.uk
www.platinuminteriordecorating.co.uk

READ OUR PAPERS ON THE GO

www.postgroupmidlands.com



ADVERTISE YOUR BUSINESS HERE

For more information on how to advertise in any of our titles please call:

07805 430191
or email:
editor.postgroup@outlook.com

just go.holidays



By Coach from Solihull, Sutton Coldfield

Reader travel



Scarborough, York, Whitby & the North Yorkshire Moors

Departing Mon 22 Jun '26

Discover Yorkshire's stunning coast and moorland on this five-day escape based in Scarborough. Highlights include historic Whitby with its dramatic cliffs and abbey, the scenic village of Goathland and the sweeping landscapes of the North York Moors.

SO MUCH INCLUDED...

- ✓ Return coach travel from Solihull, Sutton Coldfield
- ✓ 4 nights at the Royal Hotel, Scarborough (JG2 rating) with dinner & breakfast
- ✓ Entertainment some evenings
- ✓ Excursions to Whitby, North Yorkshire Moors (Goathland & Pickering) & York

Optional excursion to Beverley & Filey (£12pp)

▶ **SAVE £30 - Quote PGM**
- Book by 22 May 2026

5 Days by Coach **only £459**

Single Supplement £100



ABBA Voyage Live in London

Departing Sun 26 Jul '26, Sun 20 Sep '26,
Sun 11 Oct '26, Sun 11 Oct '26, Sun 15 Nov '26

Have you always wanted to experience the magic of an ABBA concert? Well now is your chance to say Thank You for the Music! Join us at the ABBA Arena for the incredible ABBA Voyage; where the global pop icons appear on stage as digital avatars brought to life.

SO MUCH INCLUDED...

- ✓ Return coach travel from Solihull, Sutton Coldfield
- ✓ Overnight stay at a selected hotel (JG3 or JG4 rating) with breakfast
- ✓ Ticket to ABBA Voyage at the ABBA Arena with coach transfers (dancefloor, standing)
- ✓ Free time in London for shopping & sightseeing

Upgrade to a seated ticket in Block F or K for £25pp or Block G or J for £45pp

2 Days by Coach **only £259**

Single Supplement £60



Llandudno & Scenic Snowdonia

Departing Mon 24 Aug '26

Experience five great days away to discover the beautiful coastline and spectacular scenery of North Wales, along with the elegant, refined attractions of Llandudno and the magnificent Snowdonia National Park, where we visit historic towns and quaint villages.

SO MUCH INCLUDED...

- ✓ Return coach travel from Solihull, Sutton Coldfield
- ✓ 4 nights at the Grand Hotel, Llandudno (JG2+ rating) with dinner & breakfast
- ✓ Entertainment some evenings
- ✓ Excursions to Betws-y-Coed, Conwy, Llanberis & Caernarfon

Optional excursion to Llangollen (£12pp)

5 Days by Coach **only £389**

Single Supplement £100

For more information, or to book, please call

03332 341 856 Quote PGM

033 numbers are free within inclusive minutes packages otherwise standard rates apply.

or visit us online at

justgoholidays.com/PGM

Coach package holidays are operated by & bookings made subject to Just Go! Holidays terms & conditions which can be found on our website. Your booking is protected by Bonded Coach Holidays (BCH) and the Association of Bonded Travel Organisers Trust Limited (ABTOT). Tours offered subject to availability. Errors and omissions excepted. Prices per person, based on two people sharing a room; a small number of pickup points may incur a supplement. Calls to 033 numbers are free within inclusive minute packages otherwise standard rates apply. Prices are correct at the time of printing and will be honoured for bookings made on or before 7 days after publication. Prices after this date are subject to fluctuation.



Local Sports



Coleshill Town F.C.

Coleshill Town FC Season Finale Drama Ends in Heartbreak and Pride

Coleshill Town's final weeks delivered everything football should: grit, late drama, narrow margins and a dressing room full of pride despite the pain. The Coleman finished the campaign agonisingly outside the play-offs by a single point, but the story of the season is not one of failure. With one of the smallest budgets in the division, Harry and his coaching team coaxed a squad into genuine contention from Christmas onwards, and the character shown in the closing fixtures summed up a campaign to be proud of.

March Weathered and a Cup Reality Check

The last two matches in March were a study in contrasts. In atrocious conditions at Pack Meadow, Coleshill produced a disciplined, organised display to beat Coventry Sphinx 1-0. The decisive moment came on 30 minutes when Marvellous Onabirekhanlen finished clinically to take all three points. It was a performance built on defensive shape and determination, the kind of result that kept momentum alive.

Three days later the Coleman faced a sterner test in the Birmingham Senior Cup when Leamington visited Pack Meadow. The visitors, operating at a higher level, used their experience and quality to progress, exposing the gap in resources but also offering a useful benchmark for the squad's ambitions.

April Rollercoaster Leaves Fans Breathless

April began with Coleshill sitting third in the table, two wins away from securing a play-off place. What followed was a run of fixtures that tested resolve and fortune in equal measure.

- St Neots 2-1 Coleshill Town St Neots, fighting for survival, struck just before half time and again late in the second half. Gio Dainty pulled one back in the 91st minute, but the late rally came too late to salvage a point.

- Coleshill Town 2-3 Lichfield A dramatic encounter at Pack Meadow saw Theo Rowe and Harry Rees give Coleshill hope, only for Lichfield to snatch victory with a 97th minute winner. The stoppage time heartbreak was a cruel twist in a season decided by fine margins.

- Racing Club Warwick 4-1 Coleshill Town A red card swung the game away and Coleshill were punished, suffering a heavy defeat that marked a third straight loss. The result stung, but league results elsewhere kept Coleshill's destiny in their own hands.

Despite the setbacks, the squad's resilience remained intact. A crucial home game vs Corby Town looked bleak at half time with Coleshill two goals down, but the players dug deep to salvage a 2-2 draw and keep the play-off dream alive. That draw left everything to play for on the final day.

Final Day Agony Against AFC Rushden and Diamonds

The season boiled down to a single, must-win fixture away at AFC Rushden and Diamonds. Coleshill found themselves 1-0 down at half time and then conceded again shortly after the restart, a blow that increased the pressure. Yet Coleshill showed the same spirit that had carried them all season, fighting back to level the game at 2-2. A third goal was celebrated by the Coleman Supporters, only to be ruled out for offside, the decision standing as the final kick of the match. That marginal call left Coleshill outside the play-offs by one point and brought a season of near misses to a heartbreaking close.

Season Reflection and Praise

The final month was undeniably painful, but the broader picture is one of achievement. Operating on one of the smallest budgets in the league, Coleshill Town repeatedly punched above its weight. The squad's collective spirit, the leadership from Harry and his coaching staff, and the bond with supporters turned a modest club into genuine contenders. Fans and players alike can take pride in how the team competed, recovered and never stopped believing.

End of Season Awards

- Manager's Player of the Season: Cam Belford
- Players' Player of the Season: Dan Brookes
- Supporters' Player of the Season: Dan Brookes
- Top Goalscorer: Theo Rowe
- Percy Hastings Award: Gio Dainty

Looking ahead and how you can help

Planning for next season is already underway. The aim is clear: build on this platform, add a couple of targeted pieces of business and convert near misses into a higher finish. The club needs the community now more than ever. Buy a season ticket, become a member, Sponsor the team or match, or donate — every contribution helps close the gap and turn promise into promotion. Preseason friendlies and ticket information will be posted on the club website and on X, so keep an eye out and come down to Pack Meadow to back the Coleman.

Coleshill Town may have fallen short at the final hurdle, but the season proved the club's direction is upward. The character shown across the campaign gives every supporter reason to be optimistic for what comes next.

Up the Coleman

Paddy's Training

Preparation is going well for Paddy Doyle, who has his sights set on beating four Asia Book of Records World Record Holders strength and martial arts titles.

Martial arts knee strike records with 5kg ankle weights on each leg and a weightlifting calf raise record is on the list to beat. Doyle is also in strict training for his World United Martial Arts Black belt 5th Dan which is consisting of punch bag skills, sparring and street self defence workouts.

"training is going well I am in the gym six days per week working on different muscle groups and increasing my fitness endurance levels, I have both aims this year which involves beating martial arts and physical strength records, plus getting my 5th Dan, when I do get my black belt 5th dan at least I know I have genuinely earned it."



ADVERTISE YOUR BUSINESS HERE

For more information on how to advertise in any of our titles please call:

07805 430191
or email:

editor.postgroup@outlook.com



READY TO **ENGINEER** YOUR FUTURE?

WMG Academy Solihull is now accepting applications for **Year 12** students starting in **September 2026!**

WHY CHOOSE WMG ACADEMY?

Industry-Driven Learning:

Our courses are developed in collaboration with employers to ensure you gain the skills industry actually needs.

Real-World Experience:

Students can participate in enrichment programs featuring employer engagement, university visits, and careers guidance.

Professional Placement:

T-Level students complete a 45-day (315-hour) industry placement to gain vital workplace experience.

WHAT'S ON OFFER?

Choose from a wide range of A-Levels, BTECs, and T-Levels, including:

A-LEVELS

- Biology
- Business
- Chemistry
- Computer Science
- Electronics
- English Language & Literature
- Mathematics (including Further Maths)
- Physics
- Product Design

VOCATIONAL & TECHNICAL

- BTEC/AAQ Engineering
- Applied Science
- Art and Design
- Extended Project Qualification (EPQ)

T-LEVELS Equivalent to three A-Levels

- Digital Software Development
- Engineering, Manufacturing, Processing and Control

ENTRY REQUIREMENTS

General:

Most courses require at least five GCSEs at grade 5 or above, including English and Maths.

Subject Specific:

A-Levels in sciences and maths typically require a grade 6, 7, or 8 in the relevant GCSE subjects.



YOUR JOURNEY TO BECOMING A
PROFESSIONAL ENGINEER, DESIGNER,
OR SCIENTIST **STARTS HERE.**

LEARN MORE AND APPLY:

[SOLIHULL.WMGACADEMY.ORG.UK](https://solihull.wmgacademy.org.uk)

