

# the Castle Brom Post



READ  
OUR  
PAPER  
ONLINE

[www.postgroupmidlands.com](http://www.postgroupmidlands.com)

October 2024 Issue 87



[postgroupmidlands.com](http://postgroupmidlands.com)

**PICK ME UP FREE**

## ADVERTISE YOUR BUSINESS WITH US

For prices, media pack and more information

Call 07805 430191

or email: [serena.postgroup@outlook.com](mailto:serena.postgroup@outlook.com)



**POST  
GROUP**  
MIDLANDS LTD

**WIN A FAMILY  
TICKET  
FOR THE  
PANTO!**



SEE  
PAGE  
8

**NATIONAL UK TOUR**

# Jack and the Beanstalk

THE PANTOMIME THAT'S  
FE-FI-FO-FUN!

LEMONJELLY  
PRODUCTIONS

## News from Castle Bromwich Historic Gardens

Check out events for October

See page 6



Castle Bromwich  
Hall Gardens



footscan

# WALSH PODIATRY

## FOOT, ANKLE, KNEE, HIP OR BACK PAIN?

Experienced Podiatry care plus  
the latest in technology to get you  
back on your feet.

0121 749 6313

[www.walshpodiatry.co.uk](http://www.walshpodiatry.co.uk)





*the* **ColeshillPost**

*the* **CastleBromPost**

The Post Newspaper Group is an independent hyper-local tabloid newspaper publisher distributing 2 titles with over 14,000 copies to homes and businesses in Coleshill and Castle Bromwich each month, free of charge.

Our main aim is to provide hyper-local news and information to the community where it would otherwise not be accessible. We also offer the most effective platform for local businesses to promote themselves to their target audience. This benefits the entire community and improves social-cohesion.

Any views, articles and columns expressed in this publication are those of the contributors and not necessarily those of the Publisher, nor indeed their responsibility.

## Advertising in our publications

**In order to deliver The Post free to our readers we rely on advertising revenue from local companies.**

We work with you to create the most appropriate package for your business, after all it's in our interest to make each advert work and keep everybody happy.

We can design professional artwork if needed and offer sound advice based on years of knowledge.

By choosing to advertise with us you are also showing your support for the community and the customers you hope to serve.

## Getting in touch

Sales:

[editor.postgroup@outlook.com](mailto:editor.postgroup@outlook.com)  
07805 430191

General inquires:

[serena.postgroup@outlook.com](mailto:serena.postgroup@outlook.com)

## WHY CHOOSE HYPER-LOCAL?

People prefer to buy locally and they trust local print media above all else.

Show support for the community where your customers live.

Hyper-local content - every page dedicated to the local area.

Bringing the community together by making all information available in one place.

Affordable and effective advertising packages to help small businesses promote themselves better and cheaper.

Help to increase footfall on the High Street and boost attendance at local events.

Give groups, clubs and organisations space to promote themselves and let local people know exactly what is available on their doorstep.



# CIRCULATION

### *the* **ColeshillPost**

Coleshill North  
Coleshill South  
Coleshill Industrial  
Water Orton  
Curdworth  
Maxstoke  
Shustoke

Lea Marston  
Marston  
The Whitacres  
*Also dropped in  
Minworth*

# B46

### *the* **CastleBromPost**

**Drops in:**  
Castle Bromwich  
Castle Vale  
Chelmsley Wood

Marston Green  
Kingshurst  
Shard End

# B36

All our papers also get put in local Libraries, Pubs, Clubs and Garden Centres.

# NEED EXTRA STORAGE?

Store it from only

# £20

per week



[www.absoluteselfstorage.co.uk](http://www.absoluteselfstorage.co.uk)  
07704 955750 | 01675 464446 | [hires@absoluteselfstorage.co.uk](mailto:hires@absoluteselfstorage.co.uk)  
Jubilee Industrial Estate, Gorsey Lane, Coleshill B46 1JU



## KAVANAGH'S

KITCHENS & BATHROOMS

### The Complete Service

At Kavanagh's Kitchens and Bathrooms, we offer a comprehensive design and installation service with a 3 year warranty.

Partnerships with premium brands, including...

Symphony

Tailored Bathrooms

simpsons<sup>x</sup>

GROHE

Hudson Reed

nuie



Visit our large kitchen & bathroom showroom established since 1989

Tel: 0121 604 6464  
32 East Meadway, Kitts Green, Birmingham, B33 0AP

[www.kavsbathrooms.co.uk](http://www.kavsbathrooms.co.uk)

## Coleshill Day Services

### Christmas Fayre

Sunday 24th November



11am until 2pm

Stalls  
£10/12

#### To book a stall

#### Contact us

01675 462160

[enquiries@fatherhudsons.org.uk](mailto:enquiries@fatherhudsons.org.uk)



Meet Santa  
Face painting  
Fusion of Dance  
Refreshments  
Christmas stalls  
Bottle tombola

Coventry Road, B46 3EA

## Fitness and Wellbeing

**We had another fantastic turnout for Water Orton Yoga summer school this year.**

We moved, we breathed, we meditated, and maybe a few of us snored during some gorgeous relaxations!

Starting back in the mid-eighties the late Wilf Wood began a summer school of Yoga in Curdworth to raise money for local charities. In the nineties a wonderful teacher, Val Miller, then took over the reigns. Each summer, in the village of Water Orton, Val got together different teachers to share practices and the money raised divided between a local special-educational needs school in Coleshill (then called Blythe School now Woodlands) and other local charities that students had put forward.

As the summer school became more popular Maureen Hill became the organiser and over the past few years I have been entrusted with this wonderful summer scheme, which has been held at Water Orton primary school and, occasionally, Shustoke village hall.

So, for 4-6 weeks every year we have wonderful teachers from around the Midlands come and teach, with all donations from students going to their chosen charities.

We have welcomed all schools and styles and over the years have enjoyed everything from Sivananda to Iyengar, Yin to Vinyasa, sound baths to Ashtanga, Yoga Nidra to Tibetan chanting and Qigong.

Since 2005 alone these sessions have raised over £10,000 for local charities – we have welcomed hundreds of students of Yoga through our doors and many, many wonderful teachers of Yoga.

We look out for each other. Friendships are made. Hands are held. Laughter and joy are shared.

This year was no exception. We were treated to beautiful sacred mantra chanting from Karthi Shrikanthan, a challenging yet uplifting Yoga flow from Patricia Green, Sophie Rogers blissfully soothed us with her sound bath, Emma Fletcher guided a creative all-abilities Yoga session with lots of laughter, Julie Walker introduced her own blend of Yoga and Qi fitness and Cath Hussey worked her magic with a joyful Yoga Nidra (Yogic sleep!).

Thank you to Water Orton primary school for the use of the hall (David and Wayne get a special mention as caretakers).

This year we raised £660, which has been evenly split between:

- Birmingham Christmas shelter
- Ladies fighting breast cancer – West Midlands
- Ataxia UK
- Woodlands school.

Thank you to everyone who came and supported the sessions this year. See you next time.

## Yoga & Qigong

Classes for all  
with Denise in  
Castle Bromwich  
Shustoke  
Coleshill  
Water Orton



[www.smallworldyoga.co.uk](http://www.smallworldyoga.co.uk)



07454 708646

Small World Yoga  
with Denise

Ayurvedic  
Massage  
Tamworth &  
Water Orton



## International Podiatry Day! October 8th

**On 8th October we celebrate Interna/onal Podiatry day. To raise the profile of Podiatry and help people understand what we do.**

Here a just a few things you might not realise that we do as Podiatrists.

### Laser Treatment:

Our MLS laser machine is a great and effec/ve way of helping with acute or chronic pain within your lower limb (hip to toe). It can be great for

- arthri/s
- tendoni/s,
- wound healing
- Foot, knee, ankle, and hip pain
- Swelling and oedema

It works by using the laser light to slow down the pain signal to your brain therefore reducing the pain. It can also reduce inflamma/on from the painful

area by flushing out the cells that causeswelling and redness. Finally, the laser helps speed up healing /me and gets you back to doing what you love a faster.



### Fungal Nail infections:

Fungal infec/ons can occur on the skin and nail due warm damp environments such as boots or sweaty feet. Fungal nail infec/ons can make your nail discoloured and thickened.

There are many options to treat fungal nail infections, our HCPC registered

Podiatrists can help talk through the condition and help you chose the best option for yourself. We can confirm if you have a fungal nail infection with a simple 5 minute test when we see you for an appointment.



### In growing toenails:

An Ingrowing toenail can be very painful and really prevent activity due to pain and infection.



Our Podiatrists as experts in the treatment of ingrowing toenails and all are qualified to use local anaesthetics and perform nail surgery if necessary to cure the problem safe and effectively. This procedure cures the problem and prevent sit recurring in the future.

**Note: A free Help4feet Foot cream for anyone booking in for an appointment during the week of 7th - 12th October.**

If you would like to discuss any of these treatments, why not give us a call on 0121 749 6313

**Water Orton CARNIVAL**  
*Christmas*  
**FAIR**

When:  
Sunday 1st  
December  
2pm - 5pm

Where:  
The Link  
New Road  
Water Orton  
B46 1QU

**STALL HOLDERS WANTED!**  
email stalls@  
waterortoncarnival  
co.uk

FOOD • ARTS & CRAFTS • GIFTS

## COLESHILL & DISTRICT GARDENING CLUB

**Monday 21st October**

We Welcome: CHRIS GOUGH.

Who will give a talk on: **"THE LIFE PATH TRUST"**

The Life Path Trust supports people with learning disabilities and autism.

"At Life Path Trust we focus on personalised care promoting independence and fostering community connections to help everyone we support thrive."

7.30pm Coleshill Community Centre

2 Temple Way, corner of Station Road, B46 1HH

**Members £4. Non Members £6**

Refreshments included.

All Welcome!

**For more details contact**

**Meda on 07549037477**

COLESHILL DRAMA GROUP PRESENTS...

KILLERS ON THE CROFT 2:  
**THE HOMICIDAL HIGHWAYMAN**  
BY JON PEGG

THE SEQUEL TO OUR HIGHLY SUCCESSFUL 2023 MURDER MYSTERY SET IN COLESHILL

FEATURING GLYN FURNELL

COLESHILL TOWN HALL  
7TH, 8TH, 9TH NOVEMBER  
(SATURDAY MATINEE ADDED)

**TICKETS £12 (£10 UNDER 16)**

BOOK ONLINE AT WWW.COLESHILLDRAMA.CO.UK  
TICKETS ALSO AVAILABLE FROM COLESHILL LIBRARY AND GASCOIGNES OF COLESHILL.  
ALTERNATIVELY CONTACT SUE ON 01675 462674

FREE PARKING IN CHANTRY HOUSE. LICENCED BAR.

## NOT MADE YOUR WILL YET? DOES IT WORRY YOU THAT...

Your children may NOT inherit all of your home or your hard earned savings... but the Government and others could!

*Care Fees, Inheritance Tax, Huge Legal Fees and more devastate thousands of families, often unnecessarily.*

**We come to you at a time to suit you for a FREE home visit.**

With the **RIGHT WILL** and advice, you can help ensure the **maximum possible** goes to those you love!

It all starts with a Will from **£95.00+VAT\***  
\*standard basic Will

**ACCORD**  
LEGAL SERVICES LTD

 Institute of  
Professional  
Willwriters

 APPROVED CODE  
TRADING STANDARD

**Confused? Concerned? Call Paul!**  
**0845 055 9415 | 07980 780709**  
**paul.palmer@accordwills.co.uk**

 **COLESHILL**  
Windows And Doors Ltd



**OVER 20 YEARS EXPERIENCE**

*At Coleshill Windows & Doors Ltd we believe in doing business the right way, by putting you first. That means no hard sales push, fair prices and only the highest standards of work.*

- ✓ Windows & Doors
- ✓ Composite Doors
- ✓ Conservatories
- ✓ Equinox Warm Roofs
- ✓ Roofline & GRP Roofs

**Tel: 01675 464 661**  
**Mob: 07789 855655**  
**www.coleshillwindows.uk**

*The local, family owned  
business you can trust!*

## Protect your Home

**Is your home your most valuable asset? Have you worked hard your whole life to pay for and maintain it?**

For most people, the answer to both of those questions will be a resounding yes. So with that said, why have so many people still not safeguarded their home the RIGHT way?

**Imagine this...**

You've made a Will, stating that, in the event of your death, you intend for your spouse to inherit everything, including your share of the family home. But what if your spouse needs care in later life? Your spouse may be expected to pay for their care themselves... but care fees are getting more and more expensive every year, costing anywhere between £26,000 and £52,000. How can they afford to pay for their care fees and leave some money as inheritance for your children?

This is an upsetting scenario... and unfortunately, it could happen to any of us without the right protection.

The sad truth is that around 200,000 family homes are sold every year to pay for care fees. Estates are drastically reduced- sometimes to nothing at all- to pay for care, leaving beneficiaries with little to no inheritance. The lower limit for care fee means testing is currently set at £14,250. However, your loved ones' inheritance could be even less than this simply because the home and other assets were not protected in the right way.

**Don't leave your home open to any risks.**

All of this can be avoided- with careful planning and professional advice, you can protect your home and savings so that your children can benefit as much as possible. Putting yourself in control means you'll prevent government authorities and other parties getting their hands on your assets.



**For Couples**

If you jointly own your home, we can protect your property with one of our powerful Protection Wills. These wills provide your partner/spouse with a right to continue to occupy the property and buy a replacement property if

necessary. The capital share you have in the property will also be protected. The property is also safeguarded from local authority means testing.

The ideal scenario is that half the property is protected from loss, and the other half is disregarded by local authorities. What this means for inheritance is that at least half of the property's shares will be passed down to your children.

This plan of action is applicable even if you have a mortgage!

Future stress and heartache for your family and beneficiaries can be avoided, but you must act sooner rather than later. If you fall ill and require permanent care, or if you unfortunately lose mental capacity for any reason, it will be too late to protect your home and assets.

**Act now!**

Sadly, many people put off planning for the future until its too late, leaving children and loved ones devastated to realise that the situation could have been easily avoided. The sooner planning is put into effect, the more effectively we can help you ensure that your assets go to those you love ... not those you don't!

**Do you have Savings?**

While the family home is usually the most valuable asset, we can also help you to protect your savings. Speak to us today to find out the best way to protect your assets.

Protect your Home and your Savings from unnecessary, avoidable losses. Accord can help ensure your loved ones benefit as much as possible from your estate.

Act today and protect those you love

If you want to be certain that your assets will pass down your loved ones or children you'll need more than a basic Will.

**Accord Legal Services Ltd will help you every step of the way.**

For more information please contact....

**Paul Palmer**  
**0845 055 9415 or email;**  
**paul.palmer@accordwills.co.uk**

**KINGSBURY**  
**GARAGE DOORS**

**YOUR LOCAL GARAGE DOOR SPECIALIST**

ALL TYPES OF GARAGE DOORS & FRONT DOORS



We are a family run business that carry out repairs and new installations

**Great Choice • Great Quality • Great Service**

**CALL US ON: 01827 236090**

email: [info@kingsburygaragedoors.co.uk](mailto:info@kingsburygaragedoors.co.uk)



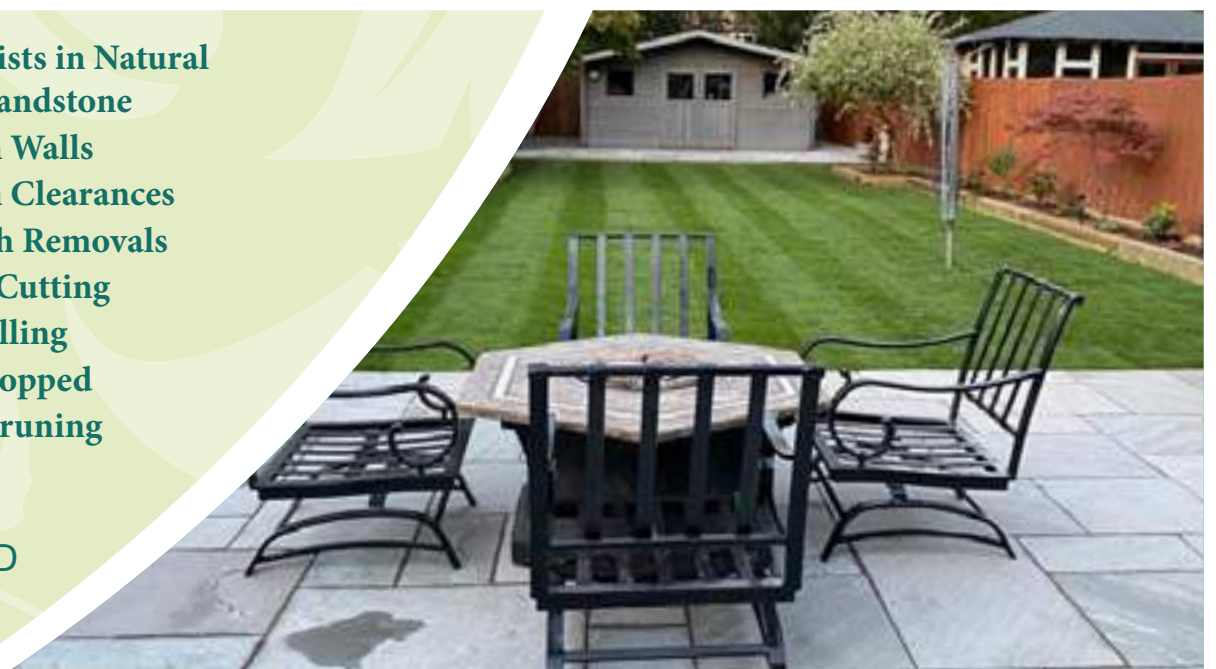
**FLOWERS**  
Landscape Gardening & Block Paving Specialists



- Block Paving
- Porcelain paving
- Resin Bond driveways
- Tarmac
- Slabbing
- Drive Repairs
- Turfing
- Grass Cutting
- Fencing
- In-print concrete driveways

- Specialists in Natural stone/sandstone
- Garden Walls
- Garden Clearances
- Rubbish Removals
- Hedge Cutting
- Tree Felling
- Trees Lopped
- Trees Pruning

ALL WORK IS GUARANTEED & CARRIED OUT BY FULLY INSURED WORKMEN



Call for a **FREE** no obligation quote

T. 0121 770 0362 M. 07773 503816

[flowers-landscaping.co.uk](http://flowers-landscaping.co.uk)


**Orton  
Installations**

**Windows • Doors • Conservatories**

**Guardian Warm Roof Specialist**



Windows (UPVC & Aluminium)

Doors (including Bi-Fold & Composite)

Conservatories

Garage Doors

Roof Lanterns

Domestic & Commercial Work

**T 0121 730 1587 / 07732 561 569**  
E [matthew\\_taylor10@sky.com](mailto:matthew_taylor10@sky.com)

32 Birmingham Road, Water Orton, Birmingham B46 1TH

# READ OUR PAPERS ON THE GO

[www.postgroupmidlands.com](http://www.postgroupmidlands.com)



# NATIONAL UK TOUR



# Jack and the Beanstalk

THEATY & FUN  
**£8**

THE PANTOMIME THAT'S  
**FE-FI-FO-FUN!**

BOOKED BY YOU TO BE  
**LEMONJELLY**

**CASTLE | ARDEN  
BROMWICH | HALL**

**Sunday 24th November 2024**

Showtimes: 2pm & 4.30pm

[www.ticketsource.co.uk/lemonjellypantos](http://www.ticketsource.co.uk/lemonjellypantos)

## Lemon Jelly Pantos returns

Following their sell out success last year, Lemon Jelly Pantos returns with Jack & The Beanstalk, the pantomime that reaches new heights! Join Jack, Dame Trott, Daisy & a whole host of magical characters in this year's GIANT of a pantomime. Visiting The Arden Hall

in Castle Bromwich on Sunday 24th November 2024 at 2pm & 4.30pm.

Can Jack get his head out of the clouds for long enough to save the day? Featuring all the traditional pantomime ingredients, this one hour, laughter packed show features colourful characters, GIANT sized jokes, fantastic music, lavish costumes & stunning sets.

**NATIONAL UK TOUR BOOK NOW! LIMITED SEATING!**

[www.ticketsource.co.uk/lemonjellypantos](http://www.ticketsource.co.uk/lemonjellypantos) Box office: 07906854269

### WIN A FAMILY TICKET FOR THE PANTO!

#### Competition:

The competition is for a family ticket (two adults & two children)

Lemon Jelly is giving one lucky reader the chance to win family tickets, read the question below. Email your answers to [editor.postgroup@outlook.com](mailto:editor.postgroup@outlook.com) by 18/10/2024 to be in for a chance to enter the draw where a winner will be chosen at random. Your name will be printed in the following issue of the papers as the winner.

In the pantomime story Jack & The Beanstalk, what does Jack Trott exchange for Daisy the cow?

A) money B) fish fingers C) magic beans

**Ticket T&C's:** Prize will be voucher code to redeem online at [www.ticketsource.co.uk/lemonjellypantos](http://www.ticketsource.co.uk/lemonjellypantos). The code can only be used for the pantomime on Sunday 24th November 2024 at Castle Bromwich Arden Hall at 2pm or 4.30pm. Tickets subject to availability. The code is only available once.







CONTACT US

07388 329667

www.jplegalservices.co.uk

## YOUR TRUSTED LEGAL ADVISORS

Quality you can  
afford, Experience  
and Integrity You  
Can Trust



JP Legal Services provides paralegal services in England & Wales. We are a paralegal advisory law firm; we are legal professionals, but we are not solicitors or barristers under English laws.

### Our Services:

- ✓ Expert guidance on fines
- ✓ Litigation support
- ✓ Employment Tribunal
- ✓ Money Claims
- ✓ Court Support
- ✓ Breach of Contract Claims
- ✓ Process/Document Serving
- ✓ Prison Recategorization
- ✓ Paralegal Support
- ✓ Legal Document Drafting
- ✓ Debt Claims
- ✓ Financial Mis-Selling

CONTACT US

07388 329667

www.jplegalservices.co.uk

## JP Legal's recent cases

Thank you for your interest and support following these adverts.

We want to bring to your attention two key cases that JP Legal have recently been instructed on. The first related to an employment tribunal matter. Our client felt harassed, had been unfairly treated and inappropriately messaged by her manager. JP Legal were instructed late in the claim and, as our client had been self representing, she had not complied with the Tribunal's directions.

We set to work urgently preparing the matter for the upcoming hearing in around 2 months time. We travelled from Birmingham to London to meet with our client and take her detailed evidence. Following that, we wrote a convincing offer of settlement to her

employer which was accepted. Our client went from a failure to comply with directions to walking away with £9,000.

The second case JP Legal has recently been instructed on relates to a Sexual Offences Prevention Order. We are in the process of obtaining the supporting evidence to show the order is no longer necessary for the protection of the public and feel confident we can get the order discharged.

We hope this shows that, whilst we are not a firm of solicitors, we can help you in a range of legal matters. Contact us today for excellent legal advice at an affordable cost.

# CHRISTMAS DAY LUNCH & DINNER

CHILD  
£22.95  
UNDER 12

**BOOKINGS  
NOW BEING TAKEN**

ONLY  
£32.95  
ADULTS

**TEL: 0121 749 5666**

**BOOKINGS: HELLO@TIKKATOWN.CO.UK**  
**ORDER ONLINE: WWW.TIKKATOWN.CO.UK**

YOU ARE WELCOME TO BRING YOUR OWN ALCOHOLIC DRINKS

**1A MANOR PARK ROAD,  
CASTLE BROMWICH, B36 0DG**

**LET'S DO DINNER £14.95<sup>PP</sup>**

PAPADOM & CHUTNEY | ANY STARTER  
ANY MAIN | ANY RICE OR NAAN  
VALID TUESDAY & WEDNESDAY.



**BirminghamLive**  
**AWARD WINNING  
RESTAURANT  
2022**

Tikka Town in Castle Bromwich named Selfill's best curry house in Restaurant & Bar Awards



## PUBLIC NOTICE

### GOODS VEHICLE OPERATOR'S LICENCE

**James Akhurst, trading as Akhurst Containers  
AMASS Group LTD of Wheeley Moor Farm  
Stonebridge Rd, Birmingham B46 3EY.**

**is applying for an operator's licence to keep  
1 goods vehicle and 1 trailer at the operating  
centre at Wheeley Moor Farm Stonebridge Rd,  
Birmingham B46 3EY**

**As an operating Centre for 1 vehicle and one trailer.**

Owners or occupiers of land (including buildings) near the operating centre who believe that their use or enjoyment of that land would be affected should make written representations to:

Traffic Commissioner West Midlands 38 George Road Edgbaston Birmingham B15 1PL no later than the 10th of October 2024

Representations must be made in writing, stating the grounds on which they are made.

A copy of the representations must also be sent to the applicant at the address given above.

Note: Objections that are frivolous or vexatious will not be considered.

## Coleshill Library Summer Reading Challenge Medal Ceremony – Saturday 7th September

Last Saturday here at the library we were delighted to have over 30 of our young readers join us for a medal ceremony to mark the end of this years Summer Reading Challenge.

The Summer Reading Challenge is for children aged 4 to 11 years old and encourages them to keep reading through the long summer holiday. The challenge is completely free and the children are given a poster and stickers at the beginning and encouraged to visit the library over the summer to receive more stickers and choose more books! We have also held our 'Crafternoons' once a week where children have come in and got involved in a variety of different crafts that support the theme: Marvellous Makers!

On Saturday we were joined by Coleshill Town Mayor – Sue Wallace who kindly presented the medals and certificates to our readers. Lots of proud faces all round!



## Can HS2 ever be a railway to somewhere?

**By Derek Axe, Coleshill resident**

Last October I wrote 'Is HS2 becoming a railway to nowhere?' and now I ask, 'Can it be a railway to somewhere?'

The huge infrastructure that we see being assembled to the west of Coleshill is giving us some reality of the impact the railway will have. There is still uncertainty as to whether the railway will reach Euston in central London particularly as a hub station is being built at Old Oak Common on the periphery of London. If this does become the London terminus for HS2 then its fate will be sealed because the time saved in travelling from Birmingham to Old Oak Common will then be lost in the transfer from Old Oak Common to central London. In other words, an expensive HS2 rail ticket will make no sense when the existing rail route terminates at Euston. However, HS2 will provide more rail capacity though at a price.

Now the only certainty is that the railway will run from Old Oak Common to the new station near Birmingham airport and on to Birmingham city centre before integrating into the existing west coast mainline near Lichfield. How can this current plan be developed to improve the west and east coast mainline

routes and at the same time make HS2 viable?

The railway at Old Oak Common could connect with new track to the east coast railway and on to St. Pancras in central London. This would not only allow HS2 into St. Pancras but also offer the possibility of HS1 Paris and Brussels being directly linked to HS2 Birmingham. In addition, the currently abandoned HS2 eastern arm could be reinstated to a new East Midlands hub on the east coast mainline between Derby and Nottingham. This in conjunction with the Lichfield west coast link would open direct access to Europe for northern cities. This could make HS2 viable and help reduce what is already a huge HS2 debt that the taxpayer will have to finance.

HS2 has the appearance of a financial disaster in the making. This may be salvaged by yet more funding to develop new links with the existing railway we have. Will this happen when there is so much demand for spending on hospitals and schools? We all await a Government decision but with the benefit of hindsight it is likely that if we could go back to 2014 when the link to HS1 was removed then HS2 would have been abandoned and the £50 billion we are now on the hook for directed into improving the railway we already had, our hospitals and our schools.



# ORCHARD NURSERIES

1973 - 2024

- Our beautiful Matrix Winter Pansies now ready single or mixed colours, also Sugar Rush Wallflowers, Violas and Polyanthus
- Autumn/Winter baskets and tubs also ready.
- Gorgeous perennial Salvias - 6 varieties, only **£6.50**
- Young shrubs only **£6.50**, including Red Robin, ceonothus, prostanthera, Azaleas and dwarf rhododendrons
- New season Evergreen hebes, only **£6.50**
- New selection of garden mirrors
- Our best selection of handbags and purses
- Reductions now on Trees and slow growing conifers (not Wilma)

Also ceramic, terracotta and plastic pots, compost - with or without peat, garden Ornaments, gift shop, garden tools and so much more.



## Our Very popular BREAKFAST WITH SANTA, is back !!

- Sunday 15th December • Saturday 21st December • Sunday 22nd December
- Christmas Eve- Tuesday 24th December.

2 sessions each day - 9.30 and 11.30.

£15.00 per person paid in Full on booking. Babies just visiting Santa £5.00.

To include cereal or orange juice, English or vegetarian breakfast (vegetarian MUST be chosen when booking), Croissants, Tea or coffee or orange/ apple juice.

After breakfast... Make reindeer food with Mrs Claus before visiting Santa in his magical grotto and receiving a gift.

Christmas eve only - each child will receive a carrot for the reindeer and for £2.50 extra can decorate a cookie for Santa.

### GROTTO ONLY

Dates as above plus Wednesday 18th December

(SEN children welcome on Wednesday 18th and preschoolers)

Come and make reindeer food with Mrs Claus before visiting Santa in his Grotto and receiving a gift.

£8.50 per child, adults free, babies (under 1s just visiting Santa) £5.00



## GARDENERS REST TEAROOM

Tea, Coffee, Cakes, Light Snacks - Eat in or Takeaway

**Why not book one of our delicious Afternoon Teas**  
**From 2 - 24 people only £18 per person.**  
**(Deposit required on booking)**

Come and enjoy our freshly cooked breakfast, Vegan and vegetarian options, hot and cold sandwiches, toasties, jackets, cream teas and of course homemade cakes - takeaway options available

Afternoon tea, prebooking required for up to 25 people

Whole cakes by preorder

Traybakes and brownies also available to order

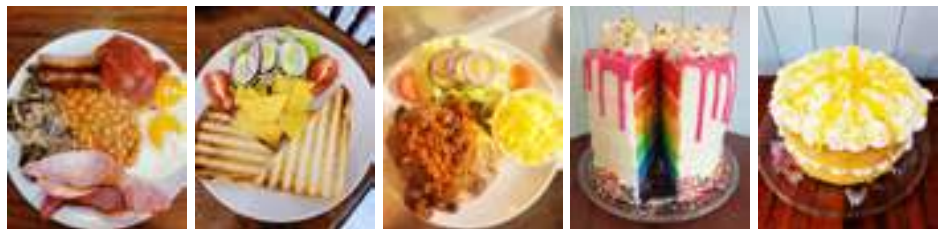
Check out our Facebook page for more details

**Open currently Monday/Tuesdays 9.30 - 2pm**

**Wednesday/Thursday/Friday/Saturday 9.30 - 3pm**

**Sunday 10.00 - 2pm**

Please enquire regarding group bookings.



**ORCHARD NURSERIES** | BIRMINGHAM ROAD  
 WATER ORTON B46 1TG  
**0121 749 7266**

OPEN 10-5 MON -SAT 10-4.30 SUNDAY

Orchard Nurseries, Birmingham Road, Water Orton B46 1TG

Tel: 0121 749 7266 / 07450102855

Julie\_heenan@yahoo.co.uk

# News from St Clement of Alexandria Green Lane, Castle Bromwich (known locally as St Clements Church)



**God promises that if we do not give up doing what is right, in the appropriate time, we will reap a harvest.**

As the days start to get shorter by the end of August we lose a total of 1 hour 43 minutes of daylight! and it doesn't stop there - we will continue to lose daylight each day right up until the Winter Solstice on the 21st December 2024 at 9.21 am to be precise. As we approach the last quarter of the year, the clocks go back by one hour at 2am on 27 October 2024 so it's one extra hour in bed. Remember to alter your clock!!

Volunteers are so important to the work of the Church and St Clements is no exception, we make no apologies for saying once again a BIG THANK YOU to all our wonderful volunteers, without whom our Groups could not run. Crafternoon started on Monday 18th October 2021 and runs every other Monday with Twenty21 following quickly behind on Tuesday 25th October 2021, running every other Tuesday. Together with the Mary Bridgeman Tea and Coffee Lounge, Forget me Not Café for those with memory loss we celebrate and salute all our teams of volunteers.

We held our Annual Garden Party on Saturday 7th September and as you might guess the "best laid" plan is so dependent on the weather. Would it rain, stay dry? Well, it was very overcast and with light rain so without too much thought we held our Garden Party indoors,

certainly a garden party with a difference!

What a joyous afternoon it was, plenty to eat and yes we did have cucumber (well not sandwiches perhaps) but it was certainly on offer. Do you remember back in the day, when a winning number was on the bottom of your chair - well we have embraced technology and yes one lucky person did indeed get the lucky number and prize - how times have changed.

We played bingo, with very posh dabbers and a prize for a "line" and "full house". Gosh who knew bingo could be so exciting waiting for that one number and then someone else shouts Bingo. What an afternoon full of laughter and chat. We certainly don't want to waste those "dabbers" so yes we will be holding an afternoon of Bingo and Cake in the New Year.

Celebrating our Heritage - St Clement's during Sunday Service on the 8th September got in the swing and celebrated Heritage Day. 1960's saw flower power, mini skirts and by the mid-1960s the wings haircut was worn by the mods. Brylcreem was popular, which you can still buy today. In this era hippies grew their hair shoulder length in protest of the Vietnam war. It's worth getting out those old photos long since forgotten and which will bring back so many memories. Out came tee shirts with 60's logos, didn't see many mini skirts, but some of the old photos were very revealing, you can almost hear your parents saying, well your dad in particular, "you are not going out my girl looking like that, too much make-up and that skirt is certainly much too short!!" Hooray for the 60's and an era that certainly broke with tradition - Chubby Checker "Let's Twist Again" (1961) those were the days - it was good to be young during the 60's. Here are some of the congregation embracing those long forgotten days when as Revd Fiona said, "she would not have been taking a service" because it wasn't until November 1992 after years of campaigning that the Church of England's General Synod voted in favour of women being admitted to the priesthood and thank goodness they did or we wouldn't have our wonderful Vicar.



Robert Louis Stevenson said "don't judge each day by the harvest you reap but by the seeds you plant. Over a lifetime many seeds are planted and it's so important to remember that tomorrow is another day and that life in all its forms is a precious gift from God and one that we should never take for granted.

#### Diary Dates:

Harvest Quiz: Saturday 26th October at 3pm  
- Tickets £6.00

Harvest Festival Service: Sunday 27th October at 11am

**Sunday 10th November - Service of Remembrance**

Christmas Fayre: date to be confirmed

Festive Tea and Carols: Saturday 7th December at 2 pm  
- Tickets £6 each

**Want to know more? Just reach out - we'd love to hear from you!**

**Phone: 0121 274 7120**

**Church Website:**

**[www.stclementschurchcb.co.uk](http://www.stclementschurchcb.co.uk)**

**Facebook: [www.facebook.com/stclementschurchcastlebromwich](https://www.facebook.com/stclementschurchcastlebromwich)**

**Email: [office@stclementschurchcb.co.uk](mailto:office@stclementschurchcb.co.uk)**

The Only Family Owned Funeral Directors in Castle Bromwich

# Hickton Family Funeral Directors

Trevor E.W. Hickton Ltd



- 24 Hour Service in all areas
- Home Visits & Arrangements
- Payment Plans
- DWP Social Help
- Simple Low Cost Funeral Options
- Private Chapels of Rest
- Modern & Classic Vehicles
- Professionally Trained Staff
- Horse Drawn & Alternative Hearses
- Pre-Paid Funeral Plans



## About Us

Established in the Black Country in 1909, the Hickton family have been serving the community through four generations.

The business currently in its 3<sup>rd</sup> and 4<sup>th</sup> generation of ownership, identified the need for a new modern independent funeral director to serve the Birmingham and Solihull areas.

Many of the long established funeral homes in the local area have been sold to much larger corporations over the past 15 years and have no family members left involved in the business. W.H. Painter, for example, are owned by Funeral Partners, a large nationwide corporate company.

We are the only family owned funeral director in the area now.

With our family ownership we feel in a position to give a much more caring service when called upon, compared to large corporate companies. We also feel we can be much more cost effective in comparison to the corporate funeral homes.

### The Basic Funeral Package £1400.00\*

Including - Professional services, transfer from place of death, care of loved one, hearse, simple coffin, funeral director, bearers.

### The Traditional Clent Funeral Package £2350.00\*

Including - Professional services, transfer of your loved one from place of death, preparation and viewing of loved one in a traditional coffin, care of loved one, hearse, one limousine, funeral director & bearers. 4ft floral coffin spray, 40 order of service booklets, ashes scatter tube, donations box and 6 bereavement support sessions.

\*cost excludes cremation, burial, doctors or minister's fees. All costs are correct up until April 2021

320 Bradford Road, Castle Bromwich B36 9AD

Opposite Toby Carvery (The Bradford Arms) 24 Hour: 0121 747 7900

www.TEWHickton.co.uk

# National Trust/u3a

Castle Bromwich and district u3a listened to a talk on Calke Abbey given by a volunteer from the National Trust. A big thank you to Colin Stewart for his informative and interesting talk.

If you're thinking of joining us then come along to our next meeting on Wednesday 25th September at 1.30 pm at Arden Hall, Water Orton Rd where we shall find out where novelists get their ideas from. New visitors welcome.



## ADVERTISE YOUR BUSINESS WITH US

For prices, media pack and more information

Call 07805 430191

or email: [serena.postgroup@outlook.com](mailto:serena.postgroup@outlook.com)



**Cllr Martin McCarthy, Castle Bromwich Ward (Solihull MBC)**

# October update

**Welcome to Golden October in Castle Bromwich, the wildlife ways areas have now been cut and are looking a little tidier, I will be chasing up maintenance of these as some areas have been a little short of variety during the summer.**

As the nights draw in and given the current circumstances there is often an uptick in local Burglary and vehicle crime at this time of the year, now is the time for extra vigilance and ensuring that window and doors are secure and security lights and cameras are functioning well.

### Water Orton Road and Green Lane Road safety works

We have visited these works on site.

The major elements of the project are now in place, there remains a significant amount of work required to complete and restore the area, we have reported back on these items to SMBC Council officers. Work on this should be completed during the month.

We will visit the area afresh when these are done, please do contact us if you have any questions.

Some drivers continue to abuse the service roads to avoid the new mini-island, pedestrian crossings and speed humps, we continue to work this issue with SMBC officers, the main issue with blocking this in the middle as several residents have suggested is providing a turning area for refuse trucks and other service vehicles.

We have also noted the decayed and missing trip rails along the service road and will get these replaced as soon as possible.

### Lanchester Park update

The park is generally in good condition with the brambles and thorn at the side of the football pitch having been cut back during the summer.

Please report any new Graffiti to us and we will request its removal by any means possible.

### Regular Councillor Surgery at Castle Bromwich Library

The next monthly surgery is scheduled for Monday the 2nd of September and takes place at the Library at 14:00, no appointment is required, please email, or call me if anything urgent comes up in the meantime.

**Our councillor emails are [martin.mccarthy@solihull.gov.uk](mailto:martin.mccarthy@solihull.gov.uk) [alan.feeney@solihull.gov.uk](mailto:alan.feeney@solihull.gov.uk) and [leslie.kaye@solihull.gov.uk](mailto:leslie.kaye@solihull.gov.uk)**



Castle Bromwich  
Hall Gardens

# News from Castle Bromwich Historic Gardens

## We love October in the Gardens...

**The colours of the trees and fallen leaves are always amazing! Dappled October sun or misty autumn mornings lend this already beautiful garden an extra bit of magic.**

The work of our gardeners does not let up at this time of year though. There's the clearing of the beds, washing of the pots, compost to be turned and leaf compost to be made. Preparing for next year's displays has already begun and as usual there are still lots and lots of repairs to be done.

As a charity, and a charity with eco sustainability firmly part of our approach, we like to make use of everything we can reasonably can, making sure we re-use and repurpose as much as possible, and of course we try to manage the Gardens and the Parkland in partnership with nature and wildlife. At this time of year, it's important to leave plenty of leaves and other 'debris' so that hedgehogs as well as insects can find shelter for overwintering. Although these 18th century Gardens are 'formal' in style, we are able to tweak that formality by keeping paths clear, but beds covered in the natural mulch of leaves. The three ponds inside our fences and the extensive wetlands on the Parkland are equally important for overwintering wildlife.

### Foraging Walks and Eco Gym

The team at the Gardens runs regular sessions to help you discover the wonders of nature in this 40 acres space on the edge of the city. Why not join us on a beginners foraging walk on 'Lady Brad's Parkland' you can discover amazing free wild food sources, even in winter. If you want to keep yourself active and learn about our basic conservation you could also join us on fortnightly 'eco gym' conservation sessions (free).



### Forest School and new woodland play area

The Gardens, like many other places, unfortunately experiences a certain level of vandalism and minor destruction. Recently one of our much loved lego animal sculptures was destroyed. Out in the Parkland the information boards we installed get serially graffitied.

We can't change this completely, but we like to think that when people know about, love and understand nature, they are less likely to want to destroy it. Which is one of the reasons our Forest School sessions are so important to us. Forest school is a child centred outdoor learning experience encouraging holistic growth and development in the outdoors for children as well as adults. Play, controlled risk and nature exploration are key to the process. Our Forest School family sessions run regularly all year - except in the depth of winter and Tree Tots and Tree Babies sessions are growing popular too.



This October we have yet more things to get the little ones used to the outdoors, to grow their physical confidence and to just love exploring. The woodland play areas have expanded beyond the mud kitchen and story circle to now include a wonderful woodland play area with climbing frames, and swing ideal for 3 to 10 year olds. So even when there is not any other activity happening families can stop and play under the walnut trees, winter and summer.

October Half Term.. Spooky disco, Woodland Wizards and drop in spidery crafts

The Gardens are open every day over the Half Term holidays from Sat 26th Oct to Sunday 3rd Nov for everyone to enjoy Autumn. Families can explore nature as it changes and discover the new play area. On Saturday 26th and Wednesday 30th there will be drop-in spooky crafts suitable for little ones hands (free with Entry).

**As usual prebookable activities run through the week - please check the website for dates, times, prices and booking**

Woodland Wizards: Tues 29th, Weds 30th and Friday 1st Nov

Woodland Adventure: Smores and Fire edition Weds 30th and Fri 1st Nov.

Of course, half term wouldn't be the same at the Gardens without the kids raucous and lively Spooky Disco - a safe but fun family experience for Halloween.



**Non-stop boppy Halloween favourites under the shelter of the stretch tent.**

**The Gardens are a safe and friendly place, but after dark, when the colourful lights come on who else might you meet as you run across the lawn to the tent?**

This year there are 2 days of spooky disco Thursday 31st Oct and Friday 1st Nov...

Each night has TWO separate sessions: an early one for the younger kiddies (4.30 - 6pm) and then 7pm - 8.30pm for the 7 - 11 year olds.

Both sessions have non-stop atmospheric music for the kids to bounce away their energies in a spooky, but not scary environment.

**The younger kiddies can slope off at 6pm for an early night, the second session welcomes families with slightly older children; the music's louder, the spooks a little scarier... same vibe.**

**We look forward to you joining us. Dress up (dress warm) and scare away. Hot chocolate and other refreshments available**




**Unplug & Play**

**OPEN EVERY DAY: 26TH OCT - 3RD NOV**

**BOOKABLE WORKSHOPS:**

- WOODLAND WIZARDS: 29TH, 30TH OCT & 1ST NOV
- WOODLAND ADVENTURE: FIRE & SMORES EDITION 30TH OCT & 1ST NOV
- SPOOKY DISCO: 31ST OCT & 1ST NOV

**DROP-IN SPOOKY CRAFTS FOR KIDS SAT 29TH AND WEDS 30TH OCT: 11-2.30PM**

**VISIT THE NEW CHILDRENS PLAY AREA!**

**October Half Term**

**ENTRY FEES APPLY**

Castle Bromwich Historic Gardens

SCAN TO FIND OUT MORE & BOOK TICKETS

DATE, TIMES AND PRICES ON OUR WEBSITE

CASTLE BROMWICH HALL AND GARDENS TRUST  
CHESTER ROAD, CASTLE BROMWICH, BIRMINGHAM, B34 9BT  
WWW.CASTLEBROMWICHHALLGARDENS.ORG.UK  
CBHALLGARDENS@GMAIL.COM, 0121 749 4189

# The Story of Castle Bromwich Parish Church (pt14)

**By David L Adams**

**So – by whomever it may have been conceived, designed and actually built – the old stone and timber framed “chapel” was finally encased in new brick and stone dressings between 1726 and 1731.**

From an old, familiar rundown rustic village building it was transformed into a shiny brand new red-brick urban “edifice.”

What on earth did the local inhabitants make of it?

One never found out in those days, in deepest Warwickshire countryside, “vox-pop” did not exist.

Once again every aspect of this phase of the development of our church is oddly mysterious. The acknowledged authoritative source on 17th century Warwickshire was written by a Shustoke man, Sir William Dugdale. It was published in its second edition in 1730 and contained a drawing of Castle Bromwich Hall with the church in the background.

This is known as The Beighton Prospect – again the product of a local man, Henry Beighton born in Griff, Nuneaton. He was a skilled engineer and FRS and did the drawing in 1726 just as the encasing work commenced on site.

I have pointed out many times in my talks in the church, that the brickwork of the chancel, where it abuts that of the south east side aisle, is a very close match in colour, but is of a different course height with a totally straight joint in the inner corner – the courses do not “run through.”

In the total absence of any evidence to the contrary, it is my belief that there was dissent as to whether the original medieval chapel walling should be kept in stone when the timber nave framing was encased.

Whether this was for religious, sentimental or financial reasons is even more debatable, but it was obviously decided that the visual result was too bizarre to remain and encasement probably followed in short order.

Obviously, when in 1726, Beighton was provided with a drawing on which to base his panorama of the Bridgeman property, the decision on the chancel walling had not been made and the book went to press too soon for the final answer to the problem to be shown.

Although after 1731 considerable internal finishing work probably still remained to be done, apart from the installation of the choir gallery in 1815, no major remodelling has ever been done from that

day to this!

The Bridgeman heir, Orlando, born in 1695, married in 1719 Lady Anne Newport of the family of the Earls of Bradford whose country seat was Weston Park in Shropshire.

When the 4th Earl died childless, in 1762, Orlando and Anne’s son, Henry, born in 1725, moved to Weston and in 1815 the Bridgemans were granted the Earldom – “of the 2nd Creation.” The Earl remains the patron of the living.

Castle Bromwich became a parish separate from Aston in 1827 and in 1878 the church was recognised as the Parish Church.

In 1893 Charles Edward Bateman, a local architect, was engaged to carry out certain restoration works and became aware of the existence of the encased frame – from which time we have been dealing with problems caused by the alterations made.

This edition’s illustration shows the church from the North in its final form, as it is today.



**OPEN 6 DAYS A WEEK**

**0121 789 6549**

**FAST, RELIABLE, PROFESSIONAL SERVICE WITH NO HIDDEN EXTRAS**

- ⊗ 2000+ TYRES IN STOCK
- ⊗ EST OVER 18 YEARS
- ⊗ BRAKES SUPPLY + FIT (CAR & VAN)
- ⊗ PUNCTURE REPAIRS
- ⊗ HUNTER 4 WHEEL ALIGNMENT

**Flaxley Tyres**

FOR ALL YOUR TYRE NEEDS



**Flaxley Alignment Centre**

WE OFFER A FREE CHECK ON THE HUNTER ALIGNMENT SYSTEM



flaxleytyres 

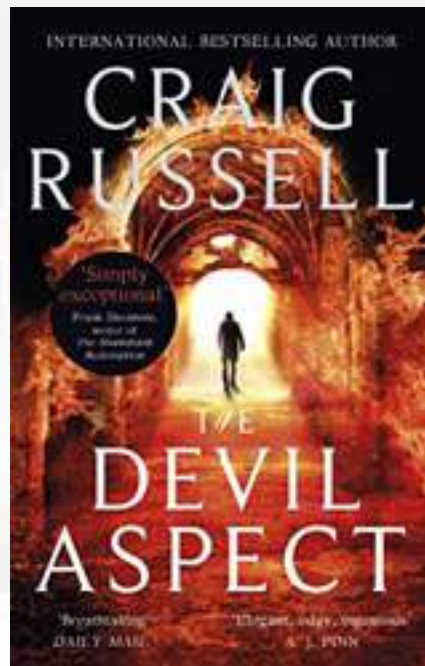
**www.flaxleytyres.co.uk**

**Unit 1, Imex Business Park, Flaxley Road, Stechford B33 9AL**

# Castle Bromwich Library Book Club

## **The Devil Aspect** by Craig Russell

1935. As Europe prepares itself for a calamitous war, six homicidal lunatics - the so-called 'Devil's Six' - are confined in a remote castle asylum in rural Czechoslovakia. Each patient has their own dark story to tell and Dr Viktor Kosárek, a young psychiatrist using revolutionary techniques, is tasked with unlocking their murderous secrets. At the same time, a terrifying killer known as 'Leather Apron' is butchering victims across Prague. Successfully eluding capture, it would seem his depraved crimes are committed by the Devil himself. Maybe they are - and what links him with the insane inmates of the Castle of the Eagles? Only the Devil knows. And it is up to Viktor to find out.



*This is an excellent psychological thriller with a wonderful mix of historical fiction and horror which is shrouded in mystery. An absolute sensational read!*

Review by Castle Bromwich Library member

## **The Other Guest** by Helen Cooper

One year ago, Leah's feisty twenty-one-year-old niece, Amy, mysteriously drowned near her family-owned luxury resort on the shores of Lake Garda. Now, Leah is returning to Italy for the first time since Amy's death. But what she finds upon her arrival shocks her: her sister, brother-in-law, and surviving niece, Olivia, seem to have erased all memories of Amy, and insist her death was an accidental drowning, despite murky circumstances. Meanwhile, in Derby, university counsellor Joanna is recovering from a surprising break-up when she is swept off her feet by a handsome bartender. But when she invites him into her home, Joanna quickly starts to realise that she doesn't know him as well as she thought.



*I read a lot of psychological thrillers, and this is one of my favourites. It has great characters, great location and brilliant writing. The plot is unique with a totally unexpected twist at the end. A book not to be missed.*

Review by Castle Bromwich Library member

## **The Weather Man** by Royston Reeves

Will's a nice guy. So when he takes a shortcut to the tube station after a few beers with his mates from work, he steps out of the way of the fellow who's staggering towards him. But he - deliberately - moves back into his path. They knock each other as they pass. Moments later one man is dead and another's life is changed forever. Or is it? There are no CCTV cameras. There was no one else in the out-of-the-way alley. Maybe the world doesn't have to end for Will after all. But there's always someone watching... and Will's life is about to implode.

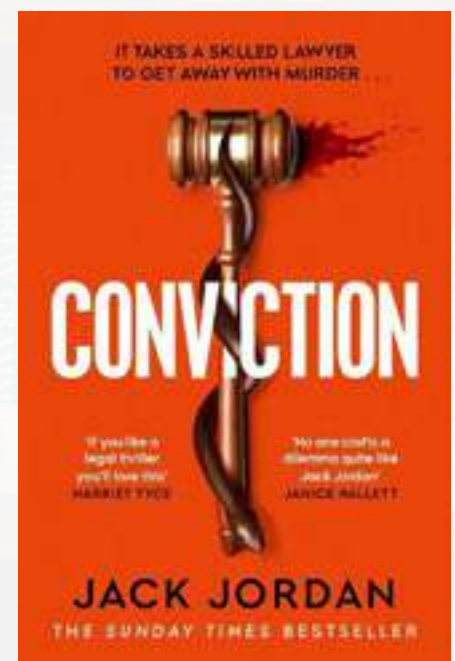


*What a brilliant book! This is Royston Reeves first book and a great psychological thriller. It is tense with unexpected twists and turns that will keep you reading. Highly recommended.*

Review by Castle Bromwich Library member

## **Conviction** by Jack Jordan

Wade Darling stands accused of killing his wife and teenage children as they slept and burning their house to the ground. When the case lands on barrister Neve Harper's desk, she knows it could make her career. A matter of days before the case, as Neve is travelling home for the night, she is approached by a man. He tells her she must throw the case or the secret about her husband's disappearance will be revealed. Failing that, he will kill everyone she cares about, until she does as she is told. Neve must make a choice - go against every principle she has ever had, or the people she loves will die.



*If you like courtroom thrillers - this book is for you. It is gripping, fast-paced, and intense. I thoroughly enjoyed reading it..*

Review by Castle Bromwich Library member



**TWO WARM HUB'S**

**Community Centre  
(Tue only) 10 to 1  
and at**

**Town Hall Tue to  
Thu 10 to 1**

**Come in for a chat  
and activities if you  
wish.**

**Free refreshments.**

**INFORMATION**

**Help and support for any issues or  
enquiries such as:-**

**Blue Badges, Driving Licence, Passport  
Applications, Online Benefit Forms  
(including Pension Credit Checks)  
and much more**

**Signposting to many groups, partner  
services and agencies – see some  
examples in boxes below**

**FREE Local Services for Local  
People**

**FREE WIFI and use of laptops &  
tablets**

**All welcome, come and visit us  
for a chat and see how the Hub  
could help you.**



**Full Town Council  
Meeting – 16<sup>th</sup> Oct  
Town Hall -  
Fifield Hall Room**

**Sumner Road, Coleshill  
Tel. 01675 462517**

**Hours. Mon to Fri 10:00 to 13:00**

**[www.coleshillhub.org.uk](http://www.coleshillhub.org.uk)**

**[coleshillcommunityhub@gmail.com](mailto:coleshillcommunityhub@gmail.com)**

**GROUPS**

**Parkinson's Cafe  
Memory Cafes  
(Coleshill/  
Water Orton)  
Young at Heart  
Stitch Club**

**SIGNPOSTING**

**Carers Trust  
CAB (Citizens  
Advice Bureau)  
MIND  
Vision Support  
Wellbeing**

**GROUPS**

**Walking Tours  
Keep Fit & Natter  
Walking Sports  
Art & Crafts  
U3A  
Parent & Toddler**

*JustGo!*  
Holidays

Reader Travel



## TORVILL & DEAN

OUR LAST DANCE - LIVE IN BIRMINGHAM

**Departing 26<sup>th</sup> April 2025**

See Jayne Torvill and Christopher Dean – ice-skating legends of British sport, live for the final time! Don't miss your chance to see the greatest ice dancers the world has ever known perform together for this special 50th-anniversary event.

**Your break includes**

- ✓ Return coach travel from **Banstead, Bromley, Croydon or Leatherhead**
- ✓ Overnight stay at a selected 3 or 4★ hotel with breakfast
- ✓ Ticket to *Torvill & Dean - Our Last Dance* show at bp pulse LIVE, Birmingham
- ✓ Return coach transfers from the hotel to the arena
- ✓ En-route visit to Birmingham

**Ticket upgrades available**

**2 Days by Coach** *from only* **£199pp**

Single supplement £35

Operated by Just Go Holidays Ltd. Coach package holidays and short breaks are subject to Just Go! Holidays terms and conditions. Your booking is protected by Bonded Coach Holidays (BCH) and the Association of Bonded Travel Organisers Trust Limited (ABTOT); this is a government approved consumer protection scheme. Tours offered subject to availability and government guidelines. Errors and omissions excepted. Prices per person, based on two people sharing a double/twin room. Single supplement applies. Calls to 033 numbers are free within inclusive minutes packages otherwise standard rates apply.



For more information, or to book, please call **03332 342 497** QUOTE: **CCM**

Or visit [justgoholidays.com/CCM](http://justgoholidays.com/CCM)

Calls to 033 numbers are free within inclusive minutes packages otherwise standard rates apply.



*JustGo!*  
Holidays

Reader Travel



## SCARBOROUGH & WHITBY

TURKEY & TINSEL



**Departing 25<sup>th</sup> November 2024**

Situated on Yorkshire's coast between two large bays, Scarborough has been welcoming visitors for nearly 400 years and provides a lovely setting for some pre-Christmas celebrations. We also discover the charming seaside town of Whitby and the pretty market town of Beverley.

**Your break includes**

- ✓ Return coach travel from **Banstead, Bromley, Croydon, Leatherhead, Redhill or Sevenoaks**
- ✓ 4 nights at a selected 2 or 3★ hotel, Scarborough with dinner & full English breakfast (includes traditional 'Christmas' dinner)
- ✓ 2 for 1 bar (6pm-9pm) on selected drinks
- ✓ After-dinner tea & coffee
- ✓ Light entertainment every evening
- ✓ Excursions to Whitby & Beverley

**Optional excursion to York (£14pp)**

**5 Days by Coach** *from only* **£239pp**

Single supplement £80

Operated by Just Go Holidays Ltd. Coach package holidays and short breaks are subject to Just Go! Holidays terms and conditions. Your booking is protected by Bonded Coach Holidays (BCH) and the Association of Bonded Travel Organisers Trust Limited (ABTOT); this is a government approved consumer protection scheme. Tours offered subject to availability and government guidelines. Errors and omissions excepted. Prices per person, based on two people sharing a double/twin room. Single supplement applies. Calls to 033 numbers are free within inclusive minutes packages otherwise standard rates apply.



For more information, or to book, please call **03332 342 497** QUOTE: **CCM**

Or visit [justgoholidays.com/CCM](http://justgoholidays.com/CCM)

Calls to 033 numbers are free within inclusive minutes packages otherwise standard rates apply.



## Security services firm scoops top prize at Solihull Awards 2024

MAN Commercial Protection Limited were announced as the winner of the top prize at the Solihull Awards 2024, receiving the accolade of Solihull's Business of the Year.

The awards ceremony, hosted by Solihull Chamber of Commerce, took place at Hilton Birmingham Metropole, in front of over 300 guests.

Headline sponsors were Hilton Birmingham Metropole and Solihull College & University Centre, while the event was compered by Brummie-born BBC West Midlands Breakfast Show presenter, PJ Ellis.

Judges were impressed with the way MAN Commercial "looked at and diversified their offer and supply services for people, businesses and the wider community".

The judges acknowledged that the security sector is a difficult sector to be in, and it is a real testament to MAN Commercial for being in business for as long as they have.

The firm was established in 1993 and have continued to survive and thrive while investing in innovation and growth.

It was a unanimous decision with the judges, who all commented on how interesting and exciting the business is and that their application was "such a pleasure to read".

MAN Commercial Protection Limited is a well-established and highly regarded security company with vast experience in all areas of the industry.

The Shirley-based business supplies fully trained security officers throughout the UK on a daily basis.

The company holds SIA approved contractor status for the provision of security guarding, door supervision, CCTV and key holding services.

MAN Commercial Protection Limited said: "We are delighted to have won two awards, we have won Business of the Year and the award for Excellence in Training, Education & Development in People.

As a Solihull business that has been trading now for 31 years, we are absolutely delighted to win these awards.

"Solihull Chamber do great work throughout the borough, to be nominated for two awards and win like that, we are just absolutely amazed."

Solihull Chamber President Eileen Schofield presented her President's Award to Steve Whitmarsh, chief executive officer of runyourfleet.

The full list of award winners is below:

Solihull's Award for Excellence in Change & Sustainability- **Touchwood Solihull**

Solihull's Award for Excellence in Contribution to Community- **Visit Knowle**. Sponsored by runyourfleet

Solihull's Award for Excellence in Customer Services- **Evac+ Chair International**

Solihull's Award for Excellence in Hospitality & Retail- **Visit Knowle**

Solihull's Award for Excellence in Professional Services- **Jerroms**

Solihull's Award for Excellence in Sales, Marketing & Communications- **Kim Hulse Consulting**

Solihull's Award for Excellence in Technology & Innovation- **Evac+ Chair International**. Sponsored by Leap IT

Solihull's Award for Excellence in Third Sector- **St Basils Charity**. Sponsored by Birmingham Business Park

Solihull's Award for Excellence in Training, Education & Development in People- **MAN Commercial Protection Limited**. Sponsored by Education Awards

Solihull's Outstanding Start-Up, Enterprise and Entrepreneurship (Start-Up)- **Solihull Virtual Assistant**. Sponsored by Vision4All

Solihull's Outstanding Start-Up, Enterprise and Entrepreneurship (Large Scale)- **UB Healthcare**. Sponsored by Vision4All

Solihull's Rising Star and Future Leader- **Sarah Breslin, Solihull College & University Centre**

Solihull's Business of the Year award- **MAN Commercial Protection Limited**. Sponsored by Solihull Metropolitan Borough Council

Solihull Chamber of Commerce Presidents Award- **Steve Whitmarsh, runyourfleet**

*Hurrah it's that time of year again!*



# TRIVIAL PURSUIT QUIZ

**4th OCTOBER 2024**

**7.30pm (Doors Open 7pm)**

**Curdworth Village Hall**

**Teams of 4 – 6 persons**

**Tickets £12**

**Fish & Chips Supper BYO Drinks & Glasses**

**Book you team in with**

**Sandra 01675 470079 / 07884 034410**

Event sponsored by Curdworth WI Registered Charity No 230461

**WHY NOT BRIGHTEN UP YOUR NOVEMBER BY COMING ALONG TO OUR**

## SKITTLES EVENING

**IN AID OF THE WATER ORTON SCOUT GROUP**



## COLESHILL TOWN HALL

**(FREE PARKING AVAILABLE AT CHANTRY HOUSE OPP THE TOWN HALL)**

**FRIDAY 1<sup>st</sup> NOVEMBER 2024**

**7.00pm for a prompt 7.30pm start**

**JACKET POTATO SUPPER**

**BYO DRINKS & GLASSES**

**TICKETS £12**

**For tickets call LIZ 07811 147728**

EVENT ORGANISED BY WATER ORTON LADIES



*The winners of the Solihull Awards 2024. Front row (L-R): PJ Ellis, Samantha Frampton (head of Solihull Chamber of Commerce) and Eileen Schofield (President of Solihull Chamber of Commerce)*

# Interiors Decorating



## Platinum October Update

**This month we thought we'd have a look at some of the most useful and important equipment and tools for painting and decorating, as well as what to look out for when buying equipment.**

We'll start with a general observation that holds true across most of the equipment available- you get what you pay for. If you're planning on using something more than once then it's worth spending a bit more on a higher quality product, if not you'll only end up having to replace it with a new one. With many tools you'll also find it easier to achieve a better quality finish if you spend a bit more money, this is especially true of paintbrushes and rollers. A common problem with cheap brushes is that they will shed bristles, this gets frustrating as you will be constantly having to remove them from your paintwork then redoing that section. Cheap brushes also make it more difficult to achieve a sharp line when cutting in. The main reason professional decorators are able to create such straight and sharp lines when cutting in is years of practice- having said that, a decent brush helps. The same applies to rollers, cheap roller sleeves will be more likely to leave things such as tram lines in the finished job and won't apply the paint evenly, they also won't last as long. A roller with a very thick, long nap might seem like a good idea in terms of getting the job done faster as they hold more paint, but it will leave a more textured finish. If you want a smoother finish (assuming the walls are smooth to start with) you need a roller with a shorter, tighter nap. It's also worth considering a small, 4 inch roller for going over brush marks when cutting in around things like light switches to achieve a more uniform finish. Some good manufacturers of brushes and rollers to look out for are Purdy, Wooster, Hamilton and Pro-Form. Our favourites are Purdy for roller sleeves and Pro-Form Blaze brushes.

### Masking Tape:

Masking tape is useful to have around for a variety of reasons. Most professionals tend not to use it as they are confident to cut in freehand, this isn't the case for most people so it's a good idea to use masking tape to achieve a straight line and to make sure you don't get paint on anything you don't want painting- such as window frames and plug sockets. The main thing to be aware of is the different levels of 'tack' of how strong the adhesion is. If you're sticking it onto something you've already painted then be sure to use a low tack tape otherwise you'll be at risk of pulling the paint off when you remove the masking tape. Most general purpose standard masking tape will do for taping up carpets when you're painting skirting boards.

### Sandpaper:

If your aim is to produce a high quality finish then sandpaper is probably the most important tool you'll use. If previously painted woodwork isn't sanded then the new paint won't adhere properly. Sandpaper is also important as it can be used to smooth out rough texture and runs in the previous paintwork. The coarseness of sandpaper is graded in what's known as 'grits'. A lower number indicates a more coarse paper, this gets more and more fine as the numbers get higher. A general rule when working with sandpaper is on very rough surfaces to start with a low grit coarse paper to get rid of the very rough parts then work top to a finish with a higher grit paper for a smoother finish prior to painting. If you don't own a power sander and aren't planning on doing enough decorating to make one a worthwhile investment then it's worth considering a pole sander for sanding walls and ceilings.

These are a simple pad that you attach sandpaper to which is mounted on a long pole. These make sanding larger areas a much less laborious process. Also very important when sanding is to purchase a decent dust mask to avoid breathing in the dust.

### Scraper:

A good scraper is always handy to have for things such as scraping off large runs or raised areas in paintwork prior to sanding.

### Filler knives:

If you're not using them week in week out a decent set of filler knives should last a lifetime. It's worth buying a set of 3 different sizes- the thin one can be useful for tight spaces such as between two door frames. A larger, wider blade is better for bigger areas of filler. Make sure you always wipe your filler knives after every use to avoid filler setting on the blade.

### Cloths:

Although seemingly insignificant this is the one item that you'll be more grateful of than anything else. Keep a damp cloth with you at all times, you can use it for wiping dust off surfaces, wiping excess filler off your knife or other surfaces, wiping paint off yourself or anywhere else you'd rather not have painted, or simply folding up and putting on your forehead while you lie down in a dark room after a full day of sanding. The list is endless.

This list is by no means exhaustive, there are of course many other tools and pieces of equipment that are useful but we hope we've included enough in the space available to help you find the job a little easier.

Lastly, if you want your tools to last then you need to look after them. Don't allow brushes and rollers to dry out and make sure you clean them properly when you're finished with them. Check the information on the back of the tin of paint for what to use to clean them- generally for water based paints use water to clean up and for solvent based paints usually white spirit. To keep brushes from drying out overnight in between uses then either leave them in a jar of water or wrap them in cling film.



**PLATINUM**  
INTERIOR DECORATING

Contact Jim or Clare  
for a free quote on:



**0121 747 7202**



**07814 566657  
or 07792 508819**

**We are a husband and wife  
painting and decorating team**

**All aspects of domestic and small  
commercial projects undertaken**

- Free written quotes
- Friendly, clean and reliable service
- Advice available on colour matching



**info@platinuminteriordecorating.co.uk**



**www.platinuminteriordecorating.co.uk**





# St Joseph's Care Home

We offer residential care, specialised dementia care and short term respite care.

Contact our Manager Shelley



01675 434559  
07341 730122



shelleyperryman@fatherhudsons.org.uk

*This is a care home  
that cares*



www.carehome.co.uk review



All Pest Species Catered For  
(except Mother in laws & teenage kids)



A Family run business established in 2006 offering industry accredited pest control & wildlife management at an affordable cost throughout Solihull & North Warwickshire.

0121 246 8879  
www.piedpiperpestmanagement.co.uk  
info@piedpiperpestmanagement.co.uk

## READ OUR PAPERS ON THE GO

www.postgroupmidlands.com



# LOCAL SERVICES



**GODWOOD GLASS & GLAZING**  
Est 1982

Broken Glass Replaced  
Broken or Misted Double Glazed Units  
UPVC & Aluminium Window Repairs  
Handles & Hinges Replaced  
Window & Door Locks Fitted  
All Types of Glass Fitted  
No Job Too Small

**FOR A FREE QUOTE CALL**  
Call 07787 804153 and I will call you  
straight back  
Your Local Castle Bromwich Glazier

**Xtreme Tree Care**

- Crown Thinning and Reduction
- Felling and Dismantling
- Pruning and Shaping
- Hedge Trimming and Removal
- Specialist Stump Removal

For a free quotation from your local tree surgeon call  
**07951 332 401**

11 Shawbury Cottages, Pump Lane, Shawbury, Colleshill B46 2RW  
xtreemetreecare@bt.com

*BABY collection*

**DID YOU KNOW THAT LILIANN STYLED BY RYAN HAS A BABY RANGE IN STORE?**

- CLOTHES UP TO 12 MONTHS
- NEWBORN TOYS
- SUSTAINABLE NEW BABY GIFTS
- CHRISTENING GIFTS AND MORE...

LILIANN STYLED BY RYAN | 92 HIGH STREET | COLESHILL | B46 3BL  
VISIT US IN STORE. FOLLOW US ON FACEBOOK OR GET IN TOUCH 01675 466 809

STYLED BY *Ryan*

## ADVERTISE YOUR BUSINESS HERE

For more information on how to advertise in any of our titles please call:  
**07805 430191**  
or email:  
[editor.postgroup@outlook.com](mailto:editor.postgroup@outlook.com)

**Create Your Perfect Kitchen**  
One to One Professional Advice & Guidance to Ensure Perfection  
Supply Only or Supply & Installation Service

Masterclass Kitchens at *Julie English Interiors*

Studio: 205 Tyburn Road, B2 1BNB 01214 484200 or Contact [Julie@juleenglishinteriors.co.uk](mailto:Julie@juleenglishinteriors.co.uk)

**COLE END ELECTRICAL**

ACCREDITED, PROFESSIONAL AND RELIABLE ELECTRICAL SERVICE LOCAL TO B46, SOLIHULL, BIRMINGHAM AND SURROUNDING AREAS.

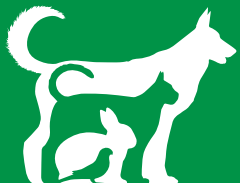
- ELECTRICAL INSTALLATIONS
- REPAIRS AND ALTERATIONS
- REWIRES
- CERTIFICATION
- INSURANCE WORK
- FULLY INSURED

**SAFETY FIRST**

MAKE SURE YOUR ELECTRICIAN IS REGISTERED!  
- Insured - Accredited by a government approved scheme  
- Qualified - Able to self certify their own work

**Mob: 07859039414**  
COLE.ENDELECTRICAL@YAHOO.CO.UK [f](https://www.facebook.com/coleendelectrical) COLE END ELECTRICAL

Registered Competent Person Electrician **NICEIC** City & Guilds



# Pet Page

## Ward End Cat Rescue

We are a small but incredibly busy home based rescue, run solely by volunteers. We are continually overrun with cats needing our help. We have lots of cats in the rescue but many of them are not ready for their forever homes as yet for various reasons including needing veterinary treatment such as neutering, ongoing health issues or being semi feral. If you are interested in rehoming a cat or want more information please email us with a contact number, address and who lives in your household. We can then contact you and inform you of any cats that may be suitable.

Come and see us at our local fundraising event on the 16th November or if you have any items suitable for our raffle or tombola we would be most grateful, thank you. Please contact Suzy or Jen via our facebook page if you are interested in donating or helping at the event.



We will also be at the Coleshill Christmas lights switch Christmas Market on Thursday 28th November 2-8pm



**Feral Cats** If any of our supporters own land or a farm with suitable outbuildings for feral cats to live we would love to hear from you please.

If you're looking to adopt a cat, or if you'd like to support the work of Ward End Cat Rescue, please visit our facebook page **WARD END CAT RESCUE OFFICIAL** or email us on [wardendcatrescueofficial@outlook.com](mailto:wardendcatrescueofficial@outlook.com).

## Birmingham Dogs Home - Forever homes



once he feels comfortable, he becomes incredibly affectionate and cuddly. He thrives on human interaction and enjoys being close to people he knows.

Chapo is a smart boy who knows all his basic commands such as sit, give paw, lie down and recall. His eagerness to please means he's a great candidate for further training. He is currently undergoing halti training at our centre, which is helping him learn to walk better on a lead.

While Chapo does enjoy water and being brushed at our centre, he is less enthusiastic about toys. He is also not a fan of cats and would prefer to be the only dog in the home. His future family will need to be experienced and dedicated, able to offer him the time and patience needed for further training and socialisation.

Chapo is not currently house trained, so his new adopters should be prepared to help him with this important skill. He can be boisterous and energetic but is also very loving once he gets to know you.

**If you are interested in adopting, please contact the centre on 0121 643 5211 to enquire.**

### Chapo

**Breed:** Crossbreed **Gender:** Male (N)

Meet Chapo he is a striking German Shepherd X Rottie mix with a heart full of potential and love. After being passed around seven homes and spending much of his life outdoors, Chapo has found his way to our centre. This resilient boy is looking for a patient and experienced adopter who can give him the stability and care he deserves.

Chapo is a loyal and loving companion who warms up well to those who take the time to know him. Although he can be a bit wary and stressed in new situations,

## Ward End Cat Rescue

*Present Their Wonderful*

# Christmas Fayre

*The Link, New Road  
Water Orton B46 1QT  
Saturday Nov 16th*

*2pm till 4:30pm*

*Vendor Stalls*

\*\*\*

*Amazing Tombola*

\*\*\*

*Refreshments*



\*\*\*

*Christmas Goodies*

Plus

*Our Famous Knitted Super Mice*

*All Proceeds Go To Our Rescued Cats & Kittens*

 Ward End Cat Rescue Official 



# SHARE A STORY

**contact:**

**[serena.postgroup@outlook.com](mailto:serena.postgroup@outlook.com)**



# GREATER BIRMINGHAM CHAMBERS OF COMMERCE AWARDS 2025

THE ICC | THURSDAY 27 FEBRUARY 2025



CELEBRATING  
THE VERY BEST  
IN GREATER  
BIRMINGHAM  
BUSINESS.  
**ENTER NOW >>>**



## ALL PLUMBING & HEATING JOBS

Finance  
**NOW**  
available  
through  
Kanda from  
**0% APR**



- Boilers install & Service
- Bathroom Fitting
- All plumbing heating & Gas jobs

Boilers  
Service  
**£60**

Contact us for a **FREE** quote



Call Joe on: 07792 470 504  
[www.jpdeakin-plumbing.co.uk](http://www.jpdeakin-plumbing.co.uk)



## READ OUR PAPERS ON THE GO

[www.postgroupmidlands.com](http://www.postgroupmidlands.com)





# Female founders hail boost from Chamber pitch competition



**Two female entrepreneurs have hailed the boost their businesses received from entering Greater Birmingham Chambers of Commerce's Women Entrepreneurs Pitch Competition.**

The programme designed to showcase the region's best women-led SMEs and start-ups is returning for a second year, with the Chamber once again partnering with NatWest and the British Business Bank.

Wolverhampton-headquartered biotech firm SymbioTex Ltd came out on top in last year's competition following a successful pitch from founder and CEO Olivia Simpson.

Ahead of the 30 September application deadline to enter the 2024 edition, Olivia and fellow finalist Christina French, from ethical manufacturer Essench Cosmetics, are encouraging more female entrepreneurs to follow their lead.

Olivia, whose firm developed a sustainable material designed to revolutionise the production of medical devices, felt compelled to enter the competition after being tagged in a LinkedIn post by West Midlands Enterprise Champion Debbie Assinder.

She went on to be named as the 'one to watch', with judges praising her "clear and well delivered pitch" and her company's "amazing area of action".

Nearly a year on from the triumph, Olivia says she has benefited hugely from the exposure and new connections.

"It was a really good competition to enter into because there was lots of exposure," she said.

"Obviously, with people from NatWest, the GBCC and everybody else involved re-sharing posts (about the event), there was a lot of exposure for myself and the other finalists.

"If I'm being completely honest, we normally don't enter competitions like this unless there is a monetary prize, because when pitching you have to put in a lot of time going through the different rounds, travelling and doing the pitch.

"However, with the contacts and connections, who the judges were, who the people behind it were and the exposure that you could gain – it definitely outweighed the fact that there was no monetary value.

"The fact that it is women-only is fantastic but it is also great that it's West Midlands-focused.

"A lot of competitions are national and I think it's very important that we're seeing more opportunities like this in the West Midlands - it also means that the connections you make are a more valuable

as well because you're from the same region."

For fellow finalist Christina, whose firm Essench Cosmetics provides an ethical manufacturing service for the cosmetics sector, the competition helped her conquer a fear of pitching.

She admits: "I'd only ever done a 60-second pitch - I didn't even have a pitch deck because it was just something that kept getting pushed to the side while I was busy working on the business.

"I must admit, when I got to the event and saw all the people, I had a bit of a meltdown – I phoned my partner and said: 'I can't do this, I'm not ready for it'.

"But after I'd pitched, the anxiety and doubt all went away. I was bouncing with energy and pride that I'd made it through in one piece without messing my pitch up!

"It gave me the skills and the confidence to push forward. I had amazing feedback and it helped bring awareness to the business.

"So, it has given me the foundations to push forward."

Christina said the competition has also made her feel part of a vibrant female entrepreneur network.

As a result of her participation, she now collaborates with another finalist, Magdalena Karlikowska, from Cytecom, the developer of a specialist bacteria detection technology.

She added: "What the competition did was bring together founders as well. It has built a network.

"I've done work with Magdalena as a result – she started sending clients over to me and we've bounced off each other."

Olivia, meanwhile, adds the whole process from entry to pitch makes the experience enjoyable for female entrepreneurs.

"The application process was very easy," she said. "On the day there was a lot of support from the Chamber team.

"The judges were also incredibly friendly and there were great opportunities for networking – the event itself was a lot of fun."

**Find out more information about the 2024 Women Entrepreneurs Pitch Competition: <https://www.greaterbirminghamchambers.com/support/women-entrepreneurs-pitch-competition.html>**



Female founder Christina-French



Female founder Olivia-Simpson

## ADVERTISE YOUR BUSINESS HERE

For more information on how to advertise in any of our titles please call:

**07805 430191 or email: [editor.postgroup@outlook.com](mailto:editor.postgroup@outlook.com)**


**POST GROUP**  
**MIDLANDS LTD**

# Local Sports



## Water Orton Bowling Club

As the season is drawing to a close all of our teams are having a successful season.

In the Erdington Over 55's league our A Team have qualified for the semi-final of the A cup and will play Banbury meanwhile the B-team have finished Third in division Three.

In the East Birmingham Tuesday league our A team were winners of division two and the A and B teams played each other in the cup final held at the Raven, The A team eventually winning the cup, both teams can be seen in the photos below.

In the East Birmingham Over 60's our A team are currently top in Division Two with two games to play, all our other teams are in mid-table positions.

In the Thursday Sutton Benevolent league the B team qualified for the cup Semi-Final but were beaten but are second in division Four with one game to play against the current leaders who lead by a single point.

Our Saturday Morning team in the Warwks parks league finished second in division Two but both the Morning and Afternoon teams have qualified for the semi-finals of their respective cup competitions.

Internal club competitions continue to be run, and the Men's championship was held on Sunday 25th August, Pictured below is John Smith the winner on the day seen below receiving his trophy from club chairman Kevin Hackett.

On Thursday 29th August the club held its annual Harry Sieckel memorial trophy competition, a good turn and excellent bowling on the day resulted in a win for club captain Paul Johnson beating Pete Costello in a close final, Paul is see below receiving the trophy from Ted Wallace, Ted is one of our longest serving members, who is now a life member having played bowls for over 60 years and in his early days was a Warwick & Worcester County player.



## 10 TO GO FOR THE 900<sup>th</sup> RECORD



Kayaking and cross country speed marches increased Warwickshires Paddy Doyle's career total to 890 documented fitness endurance challenges and World Records. Doyle in a fiberglass kayak, kayaked 2 km - 17 min. 36.28 sec, 3.5 km - 31 min. 07 sec. and 4.5km 43 min. 10 sec, weighed down by 28 lbs of kayak expedition kit along the river Leam Royal Leamington Spa.

*"the weather conditions were fairly windy especially going against the river current plus fallen trees which I had to paddle around but it was great to get three more outdoor challenges under my belt with the excellent support from my team."*

Six days later the former soldier completed six military cross country speed marches carrying 45 lb backpack over Lawsonford village footpaths and Heart of England Way footpath South Warwickshire times were 6 km - 1 hr. 01 min. 55 sec, 7 km - 1 hr. 14 min. 30 sec, 8 km - 1 hr. 24 min 23 sec, 9 km - 1 hr. 44 min. 14 sec , 10 km - 1 hr. 59 min. 14 sec , 11 km - 2 hr. 13 min. 54 sec.

*"It was a warm afternoon which meant I was drinking more water, every stile and gate I came across on the cross country course I either had to climb over or through the gate which slowed my timings but the support team made sure I kept a good pace when speed marching up hill and getting to every checkpoint."*

Present total of career physical fitness challenges' and World Records covering eleven different sportings disciplines is currently 890.





# Coleshill Town F.C.

## CTFC Match Reports

All Northern Premier League games unless stated:

### Saturday 24th August

Walsall Wood 4 v 1 Coleshill Town

Walsall are one of the favourites to win the League this year as they have brought in a squad of players that have all played at a higher level. It definitely showed in this game as Coleshill were overrun in the end although they had started well and had taken the lead through Josh Hesson just before half time. Wood scored four times in the second half.

### Monday 26th August

Coleshill Town 0 v 0 Sutton Coldfield Town

There is always an edge to this game with it being a derby, but also as previous successful manager Cameron Stuart returned to Pack Meadow for the first time. To be honest it was a bore draw as both teams lacked the cutting edge. Former Coleman Ryan Edmunds so nearly got a winner in the dying minutes but his excellent free kick hit the post.

### Saturday 31st August

F.A. Cup 1st Qualifying Round

Mickleover 5 v 0 Coleshill Town

After two wins in the FA Cup against sides from one level below, Coleshill were drawn away to Mickleover, one level above, and it was a step two far. The idea was to keep it tight for the opening minutes but the home side scored with two minutes on the clock. Coleshill started to make a game of it but goals just before, and just after, the half time break made the task impossible and Mickleover went on to win 5-0.

### Saturday 7th September

F.A. Trophy 1st Qualifying Round

Grantham Town 0 v 2 Coleshill Town

A First ever visit to Grantham Town, who are in the same League as Coleshill this season, so two more encounters are due. Coleshill dominated possession in the first half and deservedly went ahead when Alex Tomkinson got the final touch to a corner and debutant Alex McSkeane scored when he beat the home keeper to a trough ball and finished from a tight angle.

### Saturday 14th September

Coleshill Town 2 v 2 Darlestone Town

Darlestone gained promotion into this league for the first time and so this was the first ever competitive meeting between the two sides. Coleshill were poor in the first half and an impressive Darlestone side too a two goal lead. Coleshill got a life line as Alex McSkeane scored in first half added time. Coleshill were much better in the second half and equalised through Ben Usher-Skipway, his first goal for Coleshill. The Coleman tried hard to come up with a winner, and maybe deserved it but it just didn't happen.

### Saturday 21st September

F.A. Trophy 2nd Qualifying Round

Coleshill Town 3 v 2 Carlton Town

These two sides were drawn together and the same stage of the FA Trophy last season and the visitors won 5-1. It was different this time as Coleshill were 2-0 up after 20 minutes with goals from Alex McSkeane and Sam Tye, BUT, Carlton hit back with a penalty and an equaliser just before the half time whistle. Coleshill dug deep and retook the lead on the hour mark with McSkeane's second, and then the heavens opened making playing decent football almost impossible. The club house got flooded but there was no floods of goals but Coleshill held on for the win and a place in the next round of the FA Trophy.

## FIXTURES: Pitching in Northern Premier League Midland Division

3.00pm kick off unless stated.

### Saturday 28th September

Home to Wellingborough Town.

### Saturday 5th October

Away to Ilkeston Town. FA Trophy 3rd Qualifying Round. The scheduled League game against Grantham Town to be re-arranged.

### Monday 7th October

Home to Sporting Khalsa. 7.45pm.

### Saturday 12th October

Away to Rugby Town.

### Saturday 19th October

Home to Quorn.

### Tuesday 22nd October

Away to Shepshed Dynamo.

### Saturday 26th October

Home to Coventry Sphinx.

### Saturday 2nd November

Away to Worcester City.

### Saturday 9th November

Away to AFAC Rushden & Diamonds.

### LEAGUE STATS

P6 W2 D2 L2 F8 A10 Pts8 Pos12

# ADVERTISE YOUR BUSINESS HERE

For more information on how to advertise in any of our titles please call:

**07805 430191**

or email:

[editor.postgroup@outlook.com](mailto:editor.postgroup@outlook.com)



# Walk On

## FLOORING

CARPET AND VINYL SPECIALISTS

### OPENING TIMES

Mon - Fri 9:00am - 5:30pm  
Saturday 10:00am - 4:00pm  
Sunday CLOSED

TEL: 0121 770 9680



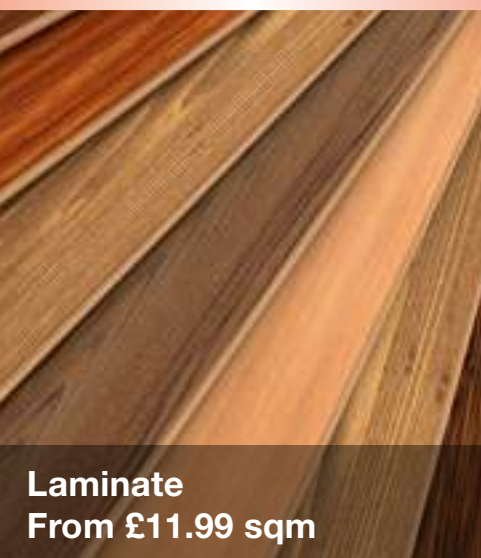
**HALF PRICE CARPET  
REMNANTS WHILE  
STOCKS LAST**



Vinyls  
From £8.99 sqm



Carpets  
From £6.99 sqm



Laminate  
From £11.99 sqm



Rugs  
From £30 each

## Why choose Walk On Flooring?

- \* Local fitters with over 25 years trade experience
- \* Wide range of carpet and vinyl pattern books
- \* All work is guaranteed and insured

Home Selection Available!

[www.walkonflooring.co.uk](http://www.walkonflooring.co.uk)

Quality room  
size remnants  
from only  
**£29.00**



Like us on  
**Facebook**

**Showroom:** Unit 3, Tile Cross Trading Estate, Tile Cross Road, Tile Cross, Birmingham B33 0NW