

Your Local Community Newspaper: The best source for local news & community information

the CastleBromPost



READ
OUR
PAPER
ONLINE

www.postgroupmidlands.com

June 2024 Issue 83



postgroupmidlands.com

PICK ME UP FREE

ADVERTISE YOUR BUSINESS WITH US

For prices, media pack and more information

Call 07805 430191

or email: serena.postgroup@outlook.com



**POST
GROUP**
MIDLANDS LTD

News from Castle Bromwich Historic Gardens Events for June

See page 6



Do you have an Ingrowing Toe Nail?

Our highly skilled Podiatry led team can put you at ease and provide specialist Nail Surgery to help you recover and have feet that look and feel wonderful.



Chiroprody / Podiatry
www.walshpodiatry.co.uk



tel. 0121 749 6313 www.walshpodiatry.co.uk

329 Chester Road, Castle Bromwich, Birmingham, B36 0JG reception@walshpodiatry.co.uk





the **ColeshillPost**

the **CastleBromPost**

The Post Newspaper Group is an independent hyper-local tabloid newspaper publisher distributing 2 titles with over 14,000 copies to homes and businesses in Coleshill and Castle Bromwich each month, free of charge.

Our main aim is to provide hyper-local news and information to the community where it would otherwise not be accessible. We also offer the most effective platform for local businesses to promote themselves to their target audience. This benefits the entire community and improves social-cohesion.

Any views, articles and columns expressed in this publication are those of the contributors and not necessarily those of the Publisher, nor indeed their responsibility.

Advertising in our publications

In order to deliver The Post free to our readers we rely on advertising revenue from local companies.

We work with you to create the most appropriate package for your business, after all it's in our interest to make each advert work and keep everybody happy.

We can design professional artwork if needed and offer sound advice based on years of knowledge.

By choosing to advertise with us you are also showing your support for the community and the customers you hope to serve.

Getting in touch

Sales:
editor.postgroup@outlook.com
07805 430191

General inquires:
serena.postgroup@outlook.com

WHY CHOOSE HYPER-LOCAL?

People prefer to buy locally and they trust local print media above all else.

Show support for the community where your customers live.

Hyper-local content - every page dedicated to the local area.

Bringing the community together by making all information available in one place.

Affordable and effective advertising packages to help small businesses promote themselves better and cheaper.

Help to increase footfall on the High Street and boost attendance at local events.

Give groups, clubs and organisations space to promote themselves and let local people know exactly what is available on their doorstep.



CIRCULATION

the **ColeshillPost**

Coleshill North
Coleshill South
Coleshill Industrial
Water Orton
Curdworth
Maxstoke
Shustoke

Lea Marston
Marston
The Whitacres
*Also dropped in
Minworth*

B46

the **CastleBromPost**

Drops in:
Castle Bromwich
Castle Vale
Chelmsley Wood

Kingshurst
Shard End

B36

All our papers also get put in local Libraries, Pubs, Clubs and Garden Centres.

NEED EXTRA STORAGE?

Store it from only

£20

per week



www.absoluteselfstorage.co.uk
07704 955750 | 01675 464446 | hires@absoluteselfstorage.co.uk
Jubilee Industrial Estate, Gorsey Lane, Coleshill B46 1JU



KAVANAGH'S

KITCHENS & BATHROOMS

The Complete Service

At Kavanagh's Kitchens and Bathrooms, we offer a comprehensive design and installation service with a 3 year warranty.

Partnerships with premium brands, including...



Visit our large kitchen & bathroom showroom established since 1989

Tel: 0121 604 6464
32 East Meadway, Kitts Green, Birmingham, B33 0AP

www.kavsbathrooms.co.uk

Brewers

DECORATOR CENTRES

Your choice for paint and wallpaper and the very best in free advice



Kieder Teal from the Albany Shangri-La Wallpaper Collection

20% OFF YOUR FIRST PURCHASE WITH A BREWERS CARD



Unit C1 Minworth Trade
Park Minworth, B76 1DH
Tel: 0121 313 1678

FREE DELIVERY*

NOT MADE YOUR WILL YET? DOES IT WORRY YOU THAT...

Your children may NOT inherit all of your home or your hard earned savings... but the Government and others could!

Care Fees, Inheritance Tax, Huge Legal Fees and more devastate thousands of families, often unnecessarily.

We come to you at a time to suit you for a FREE home visit.

With the **RIGHT WILL** and advice, you can help ensure the **maximum possible** goes to those you love!

It all starts with a Will from **£95.00+VAT***
*standard basic Will

ACCORD
LEGAL SERVICES LTD

 Institute of
Professional
Willwriters

 APPROVED CODE
TRADING STANDARD

Confused? Concerned? Call Paul!
0845 055 9415 | 07980 780709
paul.palmer@accordwills.co.uk

 **COLESHILL**
Windows And Doors Ltd



OVER 20 YEARS EXPERIENCE

At Coleshill Windows & Doors Ltd we believe in doing business the right way, by putting you first. That means no hard sales push, fair prices and only the highest standards of work.

- ✓ Windows & Doors
- ✓ Composite Doors
- ✓ Conservatories
- ✓ Equinox Warm Roofs
- ✓ Roofline & GRP Roofs

Tel: 01675 464 661
Mob: 07789 855655
www.coleshillwindows.uk

*The local, family owned
business you can trust!*

Protect your Home

Is your home your most valuable asset? Have you worked hard your whole life to pay for and maintain it?

For most people, the answer to both of those questions will be a resounding yes. So with that said, why have so many people still not safeguarded their home the RIGHT way?

Imagine this...

You've made a Will, stating that, in the event of your death, you intend for your spouse to inherit everything, including your share of the family home. But what if your spouse needs care in later life? Your spouse may be expected to pay for their care themselves... but care fees are getting more and more expensive every year, costing anywhere between £26,000 and £52,000. How can they afford to pay for their care fees and leave some money as inheritance for your children?

This is an upsetting scenario... and unfortunately, it could happen to any of us without the right protection.

The sad truth is that around 200,000 family homes are sold every year to pay for care fees. Estates are drastically reduced- sometimes to nothing at all- to pay for care, leaving beneficiaries with little to no inheritance. The lower limit for care fee means testing is currently set at £14,250. However, your loved ones' inheritance could be even less than this simply because the home and other assets were not protected in the right way.

Don't leave your home open to any risks.

All of this can be avoided- with careful planning and professional advice, you can protect your home and savings so that your children can benefit as much as possible. Putting yourself in control means you'll prevent government authorities and other parties getting their hands on your assets.



For Couples

If you jointly own your home, we can protect your property with one of our powerful Protection Wills. These wills provide your partner/spouse with a right to continue to occupy the property and buy a replacement property if

necessary. The capital share you have in the property will also be protected. The property is also safeguarded from local authority means testing.

The ideal scenario is that half the property is protected from loss, and the other half is disregarded by local authorities. What this means for inheritance is that at least half of the property's shares will be passed down to your children.

This plan of action is applicable even if you have a mortgage!

Future stress and heartache for your family and beneficiaries can be avoided, but you must act sooner rather than later. If you fall ill and require permanent care, or if you unfortunately lose mental capacity for any reason, it will be too late to protect your home and assets.

Act now!

Sadly, many people put off planning for the future until its too late, leaving children and loved ones devastated to realise that the situation could have been easily avoided. The sooner planning is put into effect, the more effectively we can help you ensure that your assets go to those you love ... not those you don't!

Do you have Savings?

While the family home is usually the most valuable asset, we can also help you to protect your savings. Speak to us today to find out the best way to protect your assets.

Protect your Home and your Savings from unnecessary, avoidable losses. Accord can help ensure your loved ones benefit as much as possible from your estate.

Act today and protect those you love

If you want to be certain that your assets will pass down your loved ones or children you'll need more than a basic Will.

Accord Legal Services Ltd will help you every step of the way.

For more information please contact....

Paul Palmer
0845 055 9415 or email;
paul.palmer@accordwills.co.uk

ORCHARD NURSERIES

1973 - 2024

Here comes summer!!

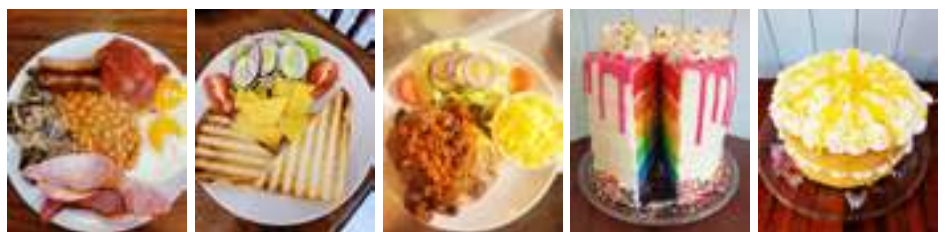
- Our Jumbo Surfinas are now available, only 1 needed to fill a 12" basket. **£4.99** same as last year
- Wide selection of hanging basket plants, **£2.50 each** or **10 for £22.50**, same as last year.
- Ready made hanging baskets and tubs.
- Tomato, cucumber, sweetcorn, pepper plants, wide selection of vegetable seedlings, herbs, fruit bushes and trees.
- Jumbo Dahlias and Geraniums ready now only **£6.50**, also Dahlietta **£3.50**
- Wide choice of Alpines and perennials from **£2.50**
- Shrubs, rhododendrons, Azaleas, pieris and more.
- Clover compost (with peat)
- Melcourt compost (without peat)
- **New** extra large Chimineas from Gardeco only **£125**




The GARDENERS REST TEAROOM
Tea, Coffee, Cakes, Light Snacks - Eat in or Takeaway

Why not book one of our delicious Afternoon Teas
From 2 - 24 people only £18 per person.
(Deposit required on booking)

Come and enjoy our freshly cooked breakfast, Vegan and vegetarian options, hot and cold sandwiches, toasties, jackets, cream teas and of course homemade cakes - takeaway options available
Afternoon tea, prebooking required for up to 25 people
Whole cakes by preorder
Traybakes and brownies also available to order
Check out our Facebook page for more details
Open currently Monday/Tuesdays 9.30 - 2pm
Wednesday/Thursday/Friday/Saturday 9.30 - 3pm
Sunday 10.00 - 2pm
Please enquire regarding group bookings.



ORCHARD NURSERIES | BIRMINGHAM ROAD
WATER ORTON B46 1TG
0121 749 7266
OPEN 10-5 MON -SAT 10-4.30 SUNDAY

Orchard Nurseries, Birmingham Road, Water Orton B46 1TG
Tel: 0121 749 7266 / 07450102855
Julie_heenan@yahoo.co.uk



Castle Bromwich
Hall Gardens

News from Castle Bromwich Historic Gardens



Woah, June in the Gardens starts and finishes with some amazing events... and, let's hope, with some fabulous weather too.

Pretty as a picture, the very first day of June combines a bloomin' floral art trail by local florists with an exciting day of making pictures of the Gardens out of LEGO® bricks and finishes with an evening of hilarious and heartwarming fun with Mrs Barbara Nice's fabulous Garden Bingo!



Three great reasons to roll up to your local Historic Gardens (see our website for times and ticket prices)

Want to learn a new skill?

The experts from SPAB (Society for the Protection of Ancient Buildings) are here over the weekend of 22nd and 23rd June training people in care and repair of heritage brick and lime mortar. With so many metres of 350 year old walls, we certainly need help. Training open to local people – in exchange for regular help). If you're visiting the Gardens that weekend why not have a look at what they're doing and ask a few questions.



Or maybe bees and honey are your thing.

The Gardens' beehives produce honey that people love to buy in our shop.



Why not learn a little bit more about these amazing creatures to whom we owe so much. We are offering you the chance to spend some time with our very own Castle Bromwich Garden bees. You will hear from a qualified beekeeper, Jane from Let It Bee Ltd, get a chance to put on a beesuit and get up close to a colony of bees – maybe you will spot the queen!

There will be time for lots of questions and the opportunity to try some local honey. Which is bee-licious.

June 15th morning (now full) or afternoon. Booking essential

Mind and body

A visit to the Gardens is pretty good for the soul as well as our bodies, why not go a step further with some outdoor Yoga (June 16th) or maybe just take a gentle stroll in the early evenings.



A Little Night Music is a brand new opportunity to explore the different spaces of the Gardens and wind down to the meditative and calming music coming through the leaves – we'll even have some ground blankets so you can lie down and look at the sky. Friday June 21st and Friday July 19th from 5pm -9pm Normal entry fees apply

Alongside all the other regular nature and plant based activities you can join in with, we end the month with another plant-based weekend treat: the **Vegan Market Company** will be setting out their stalls on Sunday June 23rd. Come and indulge, sit, eat, and join in the **Garden Party** and listen to an afternoon of great music from Central England Concert Band. Normal entry fees apply



Gardener's Tips for June

Tender veg and annual plants you may have been growing indoors can finally go outside, but remember those plants have been living a pampered life indoors - before planting out 'harden them off' first by taking them outside in a sheltered position or bring them in at night. If you have citrus plants the risk of frost should have passed and they will benefit from being outside.

Remember the sun in June can heat up a greenhouse very quickly - it may have already done this in Ma -so ensure you have adequate ventilation and shading in place to stop any plants from frying.

We're all struggling with unpredictable weather (again) this year, so predictions of timing and even the survival of plants might wring foot you ... don't panic- take your cue from the plant – not just the written 'manual'

Prune any Spring flowering shrubs to keep them compact, plants such as mock orange and forsythia benefit from having older stems removed. The flowers are formed on

older wood, so by removing just the oldest of the woody stems the plant can remain a manageable size but still be able to flower next year.

In the veg garden plant out any tender veg raised indoors, sweetcorn when planted should be done in blocks and not lines as this aids pollination and increases the crop produced and any early salad crops such as lettuce and radish should now be ready to harvest and eat. Don't forget to water in dry weather especially when plants are forming their fruits and feed any beans, tomatoes and courgettes with tomato feed as they take a lot of goodness out of the ground to produce their high yielding crop.

Check out the heritage peas that the Historic Gardens are growing this year on behalf of the Heritage Seed Library at Ryton on Dunsmore. We'll be saving the seeds from these plants to go back into the library to maintain the heritage variety for posterity.

#NoMowMay

Well done if you followed Plantlife's annual campaign advice to leave your lawns and open spaces uncut for May. Don't forget to go slowly with the mower with your first June cuts: that grass and those wildflower seed heads

can be tough on your machine blades.

Why NoMow May? We've lost nearly 97% of flower rich meadows since the 1970's and with them gone are vital food needed by pollinators, like bees and butterflies.

A healthy lawn with some long grass and wildflowers benefits wildlife, tackles pollution and can even lock away carbon below ground – and best of all, to reap these benefits all you have to do is not mow your lawn in May!

There are over 20 million gardens in the UK so even the smallest grassy patch adds up to a significant proportion of land which, if managed properly, can deliver enormous gains for nature, communities and the climate.

The Gardens are obliged to maintain the manner and style of the Gardens from over 350 years ago - which was certainly less concerned with conserving the 'natural and the wild than we are.

But we nevertheless embrace #NoMowMay in our wilder areas, but have to cut the main lawn to keep the grass healthy and accessible for you visitors. Even so continue to do as much as we can to naturally attract bees and insects to the Gardens... for the benefit of us all on this planet.



PROPERTY FOR SALE

24 Landrail Walk, Smiths wood, B36 0RS

£105,000

Offers in excess of

Presenting a delightful 2-bedroom **CHAIN FREE** first floor flat located in the desirable area of B36. This charming residence offers comfortable living spaces and a convenient location with easy access to local amenities, including shops, supermarkets, and dining options. The area also offers excellent transportation links, making commuting or exploring the surrounding areas hassle-free. An ideal choice for individuals or small families.



Lounge



21' 3" x 10' 10" (6.48m x 3.3m) Offering natural light, laminate flooring, blinds and radiator.

Bedroom One



13' 6" x 10' 5" (4.11m x 3.18m) With window to rear, blind and radiator.

Bedroom Two



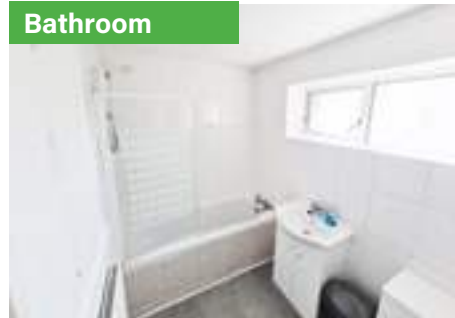
11' 0" x 10' 3" (3.23m x 3.12m) With window to side, blind and radiator.

Kitchen



11' 1" x 9' 10" (3.38m x 3m) Offering tiled flooring, window to rear, blind, wood effect worktops, cooker, wood panelling.

Bathroom



Having tiled floor, vanity unit, WC, window to front, radiator, electric shower, tiled walls around bath, basin and bi-fold door.

FOR MORE DETAILS OR TO BOOK A VIEWING CALL
0115 647 3299 or email: info@strike.co.uk

<https://bit.ly/3WXZTZV>



20% DISCOUNT
ON TAKEAWAY
Does not include any other offer

Uber Eats
DELIVERY You can now order through our website

Sunday Specials
£14.95
T&Cs apply

Ramadan

Exclusive Indian Restaurant

You are welcome to bring your own alcoholic drinks
Fully air conditioned
Own car park with CCTV



Catering for weddings, anniversaries, office parties, birthday parties, Christmas parties and all other occasions

Special Set Menu for Fathers Day Only £17.95

Tel: 01675 475 573

www.ramadanrestaurant.com

Barclay House, Kingsbury Road, Curdworth, Sutton Coldfield B76 9EE

Open 7 days a week 5pm til 11pm inc bank holidays

@The Ramadan Restaurant

Fitness and Wellbeing

Let me introduce myself, I'm Linsy and I have worked on and off in the fitness industry for too many years to admit! This column will hopefully give you an idea of Fitness & Wellbeing classes, venues and events locally (or even in your own home).

Now, more than ever, it is important to give yourself a little time to work on your physical and mental health with all of the stresses and strains of modern life. Whether it's just going for an evening stroll, jumping around in an exercise class, sweating in a game of 5aside or dozing in a gong bath, there is lots to do in the area or online.

I will try to give you an insight into a different class/venue available each month and if you are someone who has an event you would like to introduce please let me know and I'll do my best to cover it.

So this month, as we head into better weather and the outdoors beckons, I thought I'd start with one of the biggest free fitness and social events worldwide-ParkRun. Ignore the name, parkrun is open to everyone (not just hardcore running folk). Lots of people walk rather than run, many take their canine friends or children (seeing a sleeping child in a push chair being 'power pushed' is not unusual).

Park run is a straight forward 5k course which happens at venues countrywide on a Saturday morning no matter what the weather.

To get started you simply register online for free (visit www.parkrun.org.Uk). This will give you a unique code which you scan at the finish line to get an official time. You can then get access to see information such as your ranking based on age, how many people did the event you attended and where you came in that event (or you can choose to ignore the stats if it's not your thing or you would rather not know!). It is a great, low pressure, fun, community based way to enjoy a walk/run without feeling self conscious, and you can try to knock a few seconds off each time you do it.

Along the route there are friendly volunteers (no getting lost, don't worry) and if you are very lucky (it happened to me at Perry Barr) you might get a treat from a brand who have sponsored a particular event (although I think the donut on completion may have contained as many calories as my slow plod around burnt off that day).

Children can participate with adults, and on a Sunday there is a shorter 2k parkrun for children age 4-14years old at some venues.

Fancy it? Locally there are runs at-Kingsbury Water park
(get there early and parking charges apply-I think it's £2),

Babbs Mill

Sutton Park

All venues start at 9am and if it's your first time get there a little earlier for the 'first timer' talk from the days Race Director.

Be warned, once you try it you are likely to get the bug and your Saturday mornings may forever be spent hurrying out of the door with your trainers and barcode.

Sue Hann, a busy local mum had this to say about Parkrun and what it has done for her *'I love parkrun because it isn't all about running. I have volunteered on 200 occasions and the friendships and support network I have gained is life changing, there is no judgement and everyone supports each other'*

If you want to see what it's like (try before you buy!) you can spectate and give a bit of encouragement along the route to passing participants. There's often someone dressed up, hungover, or being dragged along by their dog to entertain the 'supporters' and get you itching to have a go!

All you need is some trainers and to be ready to go on Saturday morning...what's stopping you?



Park run kingsbury finish line



Dinosaurs were at parkrun before Maxstoke castle



Sutton Park has another scenic 5k to offer locally



Everything is covered in the first times briefings so you know what to expect.



Water Orton CARNIVAL

Saturday 15th June

Floats at the Village Green from around 10.45 am. The procession then makes its way around the village arriving at Carnival Field at around 12.45 pm.

ATTRACTIONS INCLUDE:

- LIVE BANDS AND SINGERS ON STAGE
- OVER 40 STALLS WITH PLENTY TO EAT AND DRINK
 - OUR DOG SHOW
 - STANWORTH'S FUN FAIR
 - FREE CHILDREN'S CRAFT TENT
 - FREE FACE PAINTER
 - OUR ROYAL COURT
- DANCING & TAE KWON-DO IN THE ARENA

For more information visit our website

www.waterortoncarnival.co.uk

or follow our FaceBook page:

 [waterortoncarnival](https://www.facebook.com/waterortoncarnival)

Thanks to our sponsors and supporters:



ADMISSION BY PROGRAMME ONLY

These are available in advance for £3 (£4 on the day)
One Adult Programme admits two children FREE.

OAPs in advance £2.50, (£3 on the day)

Programmes will be available from Water Orton Fish Bar, The Dog Inn, The Village Cantonese, The Link, the Library, Old Salts Rugby Club, Lavish Look, O'Connors, The Gardener's Rest & Orchard Nurseries.

KINGSBURY
GARAGE DOORS

YOUR LOCAL GARAGE DOOR SPECIALIST

ALL TYPES OF GARAGE DOORS & FRONT DOORS



We are a family run business that carry out repairs and new installations

Great Choice • Great Quality • Great Service

CALL US ON: 01827 236090

email: info@kingsburygaragedoors.co.uk



LAURA'S SWIM ACADEMY

NEW SWIMMING POOL COMING SOON

Coleshill Industrial Estate, Station road, B46 1JT

- ★ Swimming lessons for all ages & abilities
- ★ Dinky Diver baby/toddler/pre school classes
- ★ Leisure swims (family, SEN, adult only)
- ★ Aquafit classes
- ★ Pool parties

Please scan the QR code to register interest

Facebook - Laura's Swim Academy & Dinky Divers

Email - info@laurasswimacademy.co.uk



Orton
Installations

Windows • Doors • Conservatories

Guardian Warm Roof Specialist



Windows (UPVC & Aluminium)

Doors (including Bi-Fold & Composite)

Conservatories

Garage Doors

Roof Lanterns

Domestic & Commercial Work

T 0121 730 1587 / 07732 561 569

E matthew_taylor10@sky.com

32 Birmingham Road, Water Orton, Birmingham B46 1TH

Glitzy Bits
Fashion Blog
June 2024



As the days grow longer and the sun starts to (hopefully) make a more permanent appearance, it can only mean one thing: summer is just around the corner! Bright colours and bold patterns have been popular this year and as predicted oranges, bold pinks and vibrant greens have been in big demand. We are seeing lots of broderie anglaise in trousers, shirts, dresses and jackets which is proving to be an absolute winner and looks both classy and chic. With the warm weather comes an exciting opportunity to refresh your wardrobe and embrace the vibrant, breezy styles that this season has to offer.

So, what better way to kick off your summer fashion experience than by attending the much-anticipated Liliann Styled by Ryan Fashion Show? Mark your calendars for Sunday, 7th July 2024, and join us at The Cameo Suite, Colehill Hotel, for an unforgettable afternoon of style, inspiration, and fun.

Doors open at 2pm, and you will be warmly welcomed with a refreshing drink upon arrival. This is not just any fashion show; it's a celebration of the latest trends and timeless pieces that will define your summer look. The Liliann Styled by Ryan team has meticulously curated a collection that embodies the essence of summer – think flowing fabrics, bold prints, and a

palette of sun-kissed hues. Whether you're looking for the perfect beach ensemble, chic evening wear, or versatile day-to-night outfits, this fashion show promises to deliver just what you need to elevate your summer wardrobe.

But the excitement doesn't stop at the catwalk. Attendees will have the exclusive opportunity to view the new collections up close and personal. And for those who love a good deal, there will be end-of-line offers you won't want to miss – a chance to snag some fabulous finds at unbeatable prices. The afternoon will be a delightful blend of fashion and fun, as you mingle with fellow fashionistas and soak in the creative energy of the Liliann Styled by Ryan team.

The Liliann Styled by Ryan Fashion Show on Sunday, 7th July 2024, is set to be the highlight of the summer season. With doors opening at 2pm, you'll be greeted with a drink and an array of beautiful new collections to explore. Don't miss out on the chance to enjoy an afternoon filled with fashion, fun, and fabulous offers. We can't wait to see you there and share the excitement of the latest summer trends. So, get ready to embrace the season in style – summer is almost here, and the Liliann Styled by Ryan Fashion Show is your ultimate destination for all things chic and trendy.

Tickets available via TicketSource or follow Liliann Styled by Ryan on Facebook for more information.

Inspirational Outdoor Living

OPEN TO TRADE & RETAIL

GET A FREE BISTRO SET OR HANGING POD CHAIR ...when you spend £2500 (+ VAT) on landscaping products*

Tobermore Shannon Block Paving
208 x 173 x 50mm
14.04m² project pack

£23.00 per m²
£27.60 inc. VAT

Available in 4 colours

EH Smith Builders Merchants
Chester Rd, Castle Bromwich
0121 713 7177 ehsmith.co.uk



Local 7yr Summers Snowdon Challenge for Mind Charity COMPLETED!

Saturday 27th April Summer (age 7) started her walk up Snowdon with her friend Skye (age 6) by her side every step of the way showing her support and encouragement. Parents, family friends also accompanied the girls on their walk and all enjoyed a sunny trek. Summer wanted to do this walk to raise money for the charity MIND.



Summer smashed her Snowdon summit challenge for @mindcharity she has doubled her target raising over £1000 for Mind. So a HUGE thank you all for the incredible donations, kind words and encouragement videos from friends and family, it really helped her along the way. Thank you to our friends and family who also joined us on the challenge, we couldn't have done it without you. It was an incredible achievement made not only by her but her close friend Skye (6 years old) They were early birds catching the 7am bus, and completing it in 6.5 hours.



We are all so proud of both the girls and all they have achieved at such a young age. Well done Thank you! And thank you to those who have already donated! x x x

Life off track, we've got your back!

If you are in a legal mess, JP Legal Services has over 10 years' legal experience to help you get back on track.

We specialise in employment tribunal matters such as unfair dismissal, but we offer so much more. We can advise on business and personal contracts (such as a company's entitlement to pre-payment). We offer specialist advice in criminal cases prior to a charge being made. We understand the law regarding will drafting and creation of trusts and we can even assist with immigration applications or bringing or defending claims in the small claims court.

One of our success stories was when we were instructed by a lady near the end of her unfair dismissal claim. She had already missed several deadlines set by the Tribunal. She had not served (provided) any evidence in support of her claim to her employer. Her case looked likely to be dismissed. We worked tirelessly with her, reviewing documents, and taking her detailed instructions regarding the circumstances of her claim. We felt confident we could achieve a result to get her life back on track!

We wrote to her employer setting out the key strengths of her claim and vigorously attacking their witness evidence. We offered to settle her claim at £9,000 to avoid the hearing. After reviewing the letter, the employer accepted our offer of settlement.

Like our previous client above, we want to help you get your life back on track.

We do not hide the fact that we are not solicitors. What we cannot do is detailed in s.12 Legal Services Act 2007. Practically, this means we cannot come on the court record or submit immigration claims on your behalf (although we can and will advise you every step of the way). We cannot act in the purchase or sale of a property, and we cannot act in the administration of a deceased estate.

However, if you are looking for successful and affordable legal advice then let JP Legal Services help you get your life back on track!

Give us a call today for a free consultation.

CONTACT US

07388 329667

www.jplegalservices.co.uk

COLE END ELECTRICAL

ACCREDITED, PROFESSIONAL AND RELIABLE ELECTRICAL SERVICE LOCAL TO B46, SOLIHULL, BIRMINGHAM AND SURROUNDING AREAS.

- ELECTRICAL INSTALLATIONS
- REPAIRS AND ALTERATIONS
- REWIRES
- CERTIFICATION
- INSURANCE WORK
- FULLY INSURED

MAKE SURE YOUR ELECTRICIAN IS REGISTERED!

- Insured
- Accredited by a government approved scheme
- Qualified
- Able to self certify their own work



Mob: 07859039414

COLE_ENDELECTRICAL@YAHOO.CO.UK  COLE END ELECTRICAL



YOUR TRUSTED LEGAL ADVISORS

Quality you can afford, Experience and Integrity You Can Trust



JP Legal Services provides paralegal services in England & Wales. We are a paralegal advisory law firm; we are legal professionals, but we are not solicitors or barristers under English laws.

Our Services:

- ✓ Expert guidance on fines
- ✓ Litigation support
- ✓ Employment Tribunal
- ✓ Money Claims
- ✓ Court Support
- ✓ Breach of Contract Claims
- ✓ Process/Document Serving
- ✓ Prison Recategorization
- ✓ Paralegal Support
- ✓ Legal Document Drafting
- ✓ Debt Claims
- ✓ Financial Mis-Selling

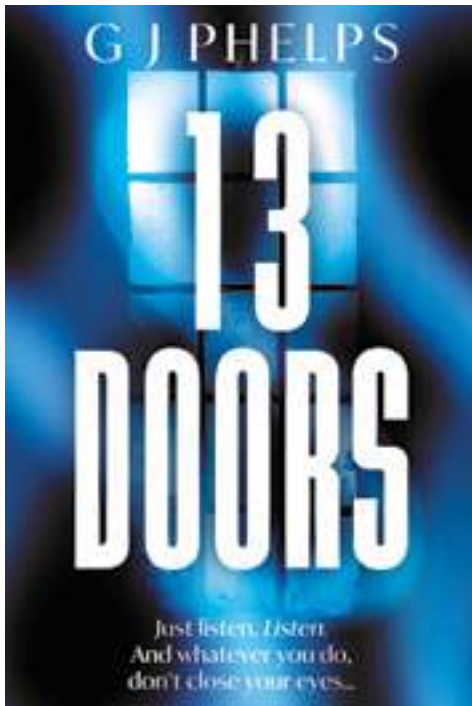
CONTACT US

07388 329667

www.jplegalservices.co.uk



Real-life spooky stories inspire chilling new novel by former Coleshill journalist



A chilling new supernatural thriller by an award-winning former Coleshill journalist has been inspired by real-life ghost stories from the region.

13 Doors, by G J Phelps, tells the story of a reporter who sets out to spend the night in thirteen genuinely haunted locations, with terrifying consequences.

And the author – real name Gary Phelps – has drawn on actual local

ghost stories that he collected over a 30-year career in newspapers to create the book.

Gary, who used to edit the Coleshill Herald and covered news in the area for many years, said: “All newsrooms have odd, unexplainable stories, where a member of the public has brought in a tale which the journalists just couldn’t explain. “After working in news for years, I’ve collected them – particularly from around the West Midlands – and when I came to write 13 Doors, I thought it would be interesting to weave them into the story.

“For example, there’s a story based on an interview I did with the manager of haunted pub in Sutton Coldfield, back when I was a reporter, and a fantastic story about a local van driver who ran over a ghost.

“Another chapter in the book was inspired by a mining disaster not far from Coleshill.”

In May, Gary appeared at Coleshill library to talk about the book, and

share some of the real-life stories behind it.

13 Doors is also largely set in the region, with locations like the Victorian cemeteries in Birmingham’s Jewellery Quarter playing a key part in the story.

In the supernatural thriller, news reporter Joe Baxter sets out to stay in 13 genuinely haunted locations, finding them through his contacts at newspapers across the UK.

Author Gary explained: “I have always been a devotee of horror and supernatural fiction and, as an Eighties kid, grew up watching classic movies of the time.

“I wanted to write a book that paid homage to those influences, while adding something new and different to the genre. Most of all, I wanted to write a horror novel that was rooted in my journalistic background.

“So, while 13 Doors is fiction, there are a handful of stories and anecdotes in it that are based on real stories – stories that journalists couldn’t explain.”

13 Doors by G J Phelps is published by the Book Guild Publishing, priced £9.99 and is available from all good book shops and can be ordered on Amazon.



We would like to extend our congratulations to Richard Parker on his election as Mayor of the West Midlands, and thank Andy Street for the impact he has made on the region during his two terms as Mayor. He has been a relentless champion for the West Midlands.

We look forward to building on our work with Richard and his team to date, and working collaboratively to implement relevant recommendations from the Business Commission West Midlands, to ensure that the region remains a destination of choice for investors, further enabling business growth and driving prosperity.”



Henrietta Brealey
 Greater Birmingham Chambers of
 Commerce CEO



Darcie the litter picking superstar!

Darcie was inspired to clean up her local area and fundraise for Father Hudson's after attending a Good Shepherd assembly by Kevin Hateley (our Head of Fundraising, Communications and Marketing) at her school. Father Hudson's offers Catholic Primary Schools assemblies during Lent to share more details about our work. This year we focused on our theme of homelessness and our project Tabor Living in Birmingham.

After the assembly Darcie set herself a target of £500 for a sponsored litter pick of Coleshill, Shustoke, Over Whitacre and Nether Whitacre, Shawbury and surrounding areas. She has been out collecting rubbish from hedgerows and verges day and night and has cleared plastic bottles and cans, took bags of rubbish, and improved the local area in the process.

Darcie's Dad, Scott said, 'The inspiration for the litter pick was really after Kevin's assembly and came from Darcie's willingness to help others. Darcie is a lovely soul who really cares for others and is very inquisitive. She met and spoke to a lovely couple who always litter pick in our area and asked to work with them. Darcie decided to use this idea not only to improve our local area but also help such a good cause. She is also doing a table top sale on Saturday to raise more funds and has been given an award at school for her good work in the community. There are now others doing the same thing for different charities so she has inspired others to do the same...'

Over Easter weekend we are pleased to share she hit her target, and we would like to say a heartfelt thank you to Darcie, her family and everyone who supported her JustGiving appeal. This shows how one person can make an enormous difference, no matter their age.

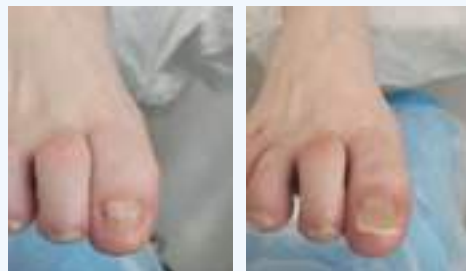
When we found out about Darcie and her mission, we were extremely impressed and invited her and her family into our Head Office to meet Kevin. Darcie also visited St Joseph's Care Home, where she was a whizz on our Tiny Tablet and enjoyed meeting and chatting with our residents. We are incredibly proud of Darcie and all her hard work and wish her all the best for the future. What an inspiration!



Summer feet incoming...

With the summer fast approaching many of us may be worried about how you can get your feet summer ready. Especially toenails. Our biggest asked question is how you can improve the look of your nails? Here at Walsh Podiatry, we have our best kept secret.

Nail Reconstruction!



before after
So, what is Nail Reconstruction?

Nail Reconstruction is a very safe treatment and is suitable for anyone with the following: damaged, thickened, uneven nails, discolouration, cracked or lifted nails, fungal and psoriatic nails. Unfortunately, it is not suitable if you are pregnant, have active skin cancers, have neuropathy or poor wound healing, are under 6 or are going into hospital. It is also important to note that we need approximately 10% of your existing nail

so that the new nail has something to adhere to. It is great way to help with nails that are thick, discoloured or evening parts missing.

How does it work?

It works by rebuilding a nail so that it looks and feels like a normal nail. We use a product called Pedisafe® which is a flexible gel that is antifungal, and antimicrobial so helps to protect the nail as well as improve the appearance. It also provides a protective layer making it less damaging to the nails than salon gel polish. It is a great summer alternative to acrylic nails. Nail the reconstruction can last from 4-6 weeks and can be done as many times as necessary to give you summer nail goals all year round.

Contact Walsh Podiatry to book your nail reconstruction on 0121 749 6313

OR book online at <https://walshpodiatry.co.uk/book-online>



Social business networking events

Heighten your profile

- Advertising opportunities
- Meet like minded people
- Relaxed informal business networking
- Presentation and Guest Speaker opportunities
- No Membership or sign up required



Check out our Facebook page. Read the papers on the go and see our latest press releases.

Contact the team for more info

- networking@biznetlocal.co.uk
- 07805430191



Breakfast Event

Last Friday of every month
8am til 10am

The Dog Inn Pub

2 Marsh Ln, Water Orton,
Birmingham B46 1NW

- Breakfast Bap • Tea & Coffee
- Free Parking • £15

News from St Clement of Alexandria Green Lane, Castle Bromwich (known locally as St Clements Church)



At the end of April and in the words of Jenny Sills' a member of St Clements "Beautiful bluebells today. The wonder of nature" at Woodlands and where the herons nest. It's on our doorstep and in today's world of technology, if you have a mobile you have a camera to capture the magic of what's all around us.

We registered the Mary Bridgeman Tea and Coffee Lounge with Solihull Council and on Monday 28th April we had an impromptu inspection visit from Environmental Health Safer Food. We were absolutely delighted to be awarded a Level 5. Our thanks go out to the Team for all their hard work in getting the Level 5 and for the support of the PCC and congregation. Thank you to David Somen for printing off numerous pages (over 100 in total) for our Management Diary and thank goodness for the Church photocopier, our small home printers would not have coped!! The Holy Dusters also received a compliment from someone visiting for the first time on how lovely the Church looked, so clean and cared for, so it was a really positive day for us all.

Never say never, anything and everything is possible, you just have to believe and put your mind to it. St Clements has always had a 'can do' attitude, perhaps this has been inherited you never know!!



Pentecost is a Christian holiday which takes place on the 50th day after Easter Sunday. It commemorates the descent of the Holy Spirit upon Mary, mother of Jesus and the Apostles of Jesus while they were in Jerusalem celebrating the Feast of Weeks, as described in the Acts of the Apostles. This year it was celebrated on Sunday 19th May 2024. The altar for Pentecost is dressed in Red, recalling the fiery tongues that descended upon the Apostles when they received the Holy Spirit.

What's on at St Clements in the coming months: here are some dates for your Diary:

13th July	11 am start	Summer Fayre
7th Sept	2 pm start	Garden Party
5th Oct	11am start	Macmillan Coffee Morning
7th Dec	2pm start	Festive Tea and Carols

We will be having our annual Sponsored Walk and Harvest/Autumn Quiz later in the year, so keep an eye out for the dates.

On Tuesday 9th April the Twenty21 group made daffodils under the guidance of Mel the Leader of 4th Castle Bromwich Brownies. Edith who comes to the group was celebrating her 96th birthday and was presented with a beautiful bouquet of flowers especially made for her with cards and everyone singing Happy Birthday. Oh and there was cake! During the summer months the group will be making a 'beach in a bottle' again with the help of the Brownies. It's certainly never too late to learn - thank goodness.

Plans are well on the way for a Church day out by coach in July to Hereford. This time it's only about 68 miles as the 'crow flies'. A visit to the Cathedral with maybe a pub lunch and some retail therapy before catching the 5.30 pm

service and then tired and weary homeward bound. Our thanks go to Janet Smith and Ann Kew for arranging this. Can't wait - hope it doesn't rain!

St Clements' Forget Me Not Memory Café which takes place on the 2nd and 4th

Thursday of each month for Carers and those suffering from Memory Loss, will be starting gentle exercise on the 13th of June. The 2nd Thursday and the 4th Thursday we will be offering hand massage, each month with Janine. One of our volunteers secured funding for this activity and we felt it fits well with the Memory Café. Carers are unsung heroes who really go under the radar but are so important to so many. The support and love they give is invaluable to those who receive their care. Don't sit at home, if you are a carer, even if the person (young or perhaps not so young) you care for doesn't come or you have lost that person you can still come along and enjoy a chat and cup of tea or coffee in a warm space. You will be made very welcome.

The Holy Dusters, felt getting down the Church Banners and yes trying to get them back up, was just too much and they needed some help. So it was decided to get everyone involved. On Saturday 15th June starting at 9.30am the 'big clean' will take place. All are welcome, no need to bring anything. We can supply step ladders, polish and brooms! and we do take a tea and coffee break for a well earned rest.

SERVICES AT ST CLEMENTS

**1st and 3rd Sunday in the month
@ 9.45 am with a Praise Service.**

**2nd and 4th (including if there is a 5th Sunday)
@ 11am with Holy Communion.**

**Every Wednesday is Holy Communion
@ 10 am in the Chapel.**

For all information about our Service, Groups and Events:

Phone: 0121 274 7120

Church Website:

www.stclementschurchcb.co.uk

Facebook: www.facebook.com/stclementschurchcastlebromwich

Email: office@stclementschurchcb.co.uk

The Grammar Schools in Birmingham

Year 7 Entry For September 2025

Register Now for the Entrance Test
Closing Date Friday 28th June 2024 at 4pm



**Bishop Vesey's
Grammar School**
'Inspiration & Excellence'



**KING EDWARD VI
ASTON SCHOOL**



**KING EDWARD VI
CAMP HILL
SCHOOL FOR BOYS**



**KING EDWARD VI
CAMP HILL
SCHOOL FOR GIRLS**



**KING EDWARD VI
FIVE WAYS SCHOOL**



**KING EDWARD VI
HANDSWORTH GRAMMAR
SCHOOL FOR BOYS**



**KING EDWARD VI
HANDSWORTH
SCHOOL FOR GIRLS**



**SUTTON COLDFIELD
GRAMMAR SCHOOL
FOR GIRLS**

For more information please visit: westmidlandsgrammarschools.co.uk



Saqib Bhatti MBE, MP for Meriden

June update

Dear Resident,

I have recently launched my 'A&E for Solihull' campaign to call for A&E services to be made available within the Solihull borough. Over my years as your Member of Parliament, I have continuously campaigned for better healthcare resources for our community. This has led to the opening of an Urgent Treatment Centre at Solihull Hospital and a Community Diagnostic Centre in Chelmsley Wood, both offering convenient healthcare access for non-emergency treatment. Currently, people within the Solihull borough have to travel to neighbouring areas to access A&E services, with many residents being diverted to Heartlands Hospital in Bordesley Green. The journey from Solihull to Bordesley Green can take over an hour, making travel to an A&E department increasingly difficult for those without access to a car and those with mobility issues. With a growing population of over 216,000 people we must ensure more convenient access to healthcare. As part of my campaign, I have written to the Secretary of State for Health and Social Care to ask for support in providing A&E services. To support my campaign, you can go to <https://www.saqibbhatti.org.uk/ae-solihull-petition> to sign the petition.

I am so pleased to welcome the government's childcare expansion to better support working families by more than doubling the current support in place.

This means that by September 2025, most working families with children aged nine months to five years will be able to access 30 hours of childcare support. The changes to childcare entitlement are being rolled out gradually to ensure providers have time to meet the growing needs. By implementing these changes, the government aims to make childcare more accessible and allow more parents to return to work. Having spoken to the Chancellor about the increasing pressure on parents in my constituency, I very much welcome the childcare expansion. Childcare is one of the biggest costs facing working families and I am sure these changes will support more parents back into work.

The government recently announced that it will increase defence spending to 2.5% of GDP by 2030. This means that by 2030 defence spending will reach £87 billion per year. Defence will also receive an additional £75 billion over six years to make sure that the UK remains the second largest contributor to NATO, behind the US. The additional funding will be used to put the UK's defence industry on war footing and to support Ukraine in its ongoing conflict with Russia. With the world becoming increasingly dangerous we must strengthen our national defence to meet this challenge. The government is taking active steps to safeguard our nation and make sure we are prepared for any challenges we may face.

As ever, my office remains open and we are conducting surgery appointments, so do not hesitate to book a slot. My contact details can be found below:

saqib.bhatti@parliament.uk

0121 711 7029

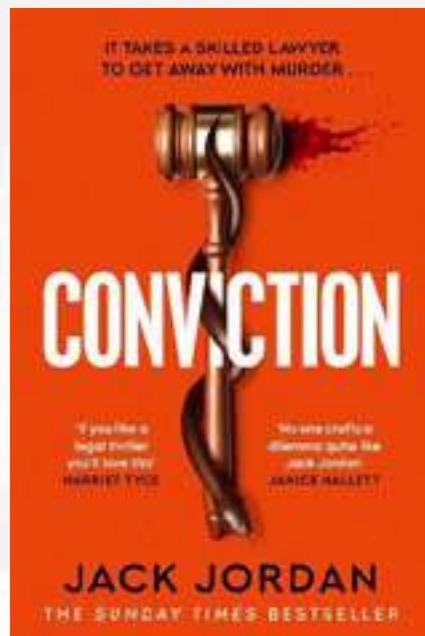
Castle Bromwich Library Book Club

Conviction by Jack Jordan

Wade Darling stands accused of killing his wife and teenage children as they slept and burning their house to the ground. When the case lands on barrister Neve Harper's desk, she knows it could make her career. A matter of days before the case, as Neve is travelling home for the night, she is approached by a man. He tells her she must throw the case or the secret about her husband's disappearance will be revealed. Failing that, he will kill everyone she cares about, until she does as she is told. Neve must make a choice - go against every principle she has ever had, or the people she loves will die.

This is a tense, exciting and at times dark thriller. It is full of shocks, surprises and cliff-hangers which will keep you on the edge of your seat and turning the pages. A brilliant read!

Review by Castle Bromwich Library member



Seven summers by Paige Toon

Six summers ago, Liv and Finn meet working in a bar on the rugged Cornish coastline, their futures full of promise. When a night of passion ends in devastating tragedy they are bound together inextricably. But Finn's life is in LA with his band, and Liv's is in Cornwall with her family - so they make a promise. Finn will return every year, and if they are single they will spend the summer together. This summer, Liv crosses paths with Tom - a mysterious new arrival in her hometown. As the wildflowers and heather come into bloom, they find themselves falling for one another. For the first time Liv can imagine a world where her heart isn't broken every year. Now, Liv must make an impossible choice. And when she discovers the shocking reason that Tom has left home, she'll need to trust her heart even more.

This book is beautiful, heartbreaking, and unpredictable. It is more than a love story - it's about love, loss, grief, and self-discovery. Make sure you have tissues at the ready! Highly recommended.

Review by Castle Bromwich Library member



The escape room by L.D. Smithson

Bonnie arrives on a remote sea fort off the coast of England to take part in a mysterious reality TV show. Competing against seven strangers, she must solve a series of puzzles to win the prize money, but this is no game - and the consequences of failure are deadly. No one leaves. Under scrutiny from the watching public, the contestants quickly turn on one another. Who will sacrifice the most for wealth and fame? And why can't Bonnie shake the creeping sense that they are not alone? The only way out is to win.

This is a clever, chilling, creepy, atmospheric thriller which sucked me in from the start. It has a compelling plot and I found it quite thought provoking in places. The characters are well-developed and interesting. I would really recommend reading this book if you like psychological mysteries.

Review by Castle Bromwich Library member



The Birdcage Library by Freya Berry

Emily Blackwood, adventuress and plant hunter, travels north for a curious new commission. A gentleman has written to request she catalogue his vast collection of taxidermied creatures before sale. On arrival, Emily finds a ruined castle, its owner haunted by a woman who vanished years before. And when she discovers the ripped pages of a diary, crammed into the walls, she realises dark secrets lie here, waiting to entrap her too.

This book is a beautifully written and captivating thriller. It has intricately woven plotlines and fascinating characters along with gothic atmosphere and mystery. I thoroughly enjoyed it and would recommend it.

Review by Castle Bromwich Library member





Cllr Martin McCarthy, Castle Bromwich Ward (Solihull MBC)

June update

Welcome to Summer in Castle Bromwich, let's get out and enjoy it at last.

Many thanks

It was good to meet many of you during the recent SMBC Election campaign and to share your local concerns and aspirations for our area and many thanks to all of you for supporting me in the recent elections, now work continues to take these things forward. Our Councillor Surgery Dates are as given below.

Road Safety

Consultation is Beginning on the introduction of new 20MPH Speed limits around St Mary and St Margaret's Primary School, these are on Southfield, Woodford, Wentworth, Larkfield and Ringmere Avenues and Chestnut Drive. The Traffic Regulation Orders will be formally advertised from 17th May 2024, with the 3-week consultation period ending on 10th June 2024, please do respond with your views.

The new pedestrian crossing at Arden Hall is functioning well and is helping to slow traffic in the vicinity. The grass verge adjacent this was disturbed during its construction and needs clearing of loose stone and reseeding to recover its appearance, officers have responded, and we look forward to the work being completed.

Our environment

Further options for verge tree planting are being examined to try to speed up this process to get these approved before the winter planting Season.

The abandoned temporary traffic signs at the Arden end of Marlborough road have now been removed by SMBC.

We have asked SMBC to review the location of some of the benches around the Arden Hall part of the area around Bus Stops to better support residents that value a place to sit whilst awaiting our increasingly unpredictable bus arrivals.

Public Transport

The No 96 Bus service petition was submitted to SMBC and onward to WMCA during April

As soon as we have a response from WMCA I will share this with you.

Regular Councillor Surgery at Castle Bromwich Library.

The next monthly surgery is scheduled for Monday the 13th June and takes place at the Library at 14:00, no appointment is required, please email, or call me if anything urgent comes up in the meantime.

Our councillor emails are martin.mccarthy@solihull.gov.uk
alan.feeney@solihull.gov.uk and leslie.kaye@solihull.gov.uk

Do you enjoy singing? - Come and join us!



Castle Bromwich Singers are an established singing group who meet every Tuesday evening. We are currently looking for new men and women to come and join our group.

We meet at the Baptist Church, Timberley Lane, B34 7HU 7.30pm. Our shows feature a wide variety of music and through these we raise money for local charities. We also sing out in the community.

Castle Bromwich Singers invite you to come along and try the benefits of singing in a group. It will boost your social life, your mood and overall wellbeing. You will feel the physical benefits too, as singing increases your energy levels, and, when you perform as part of a group you will overcome nerves and build confidence in your own abilities. Come and join us and find friendship, support and fulfilment in our vocal group.

You are welcome anytime and we look forward to meeting you.



The Only Family Owned Funeral Directors in Castle Bromwich

Hickton Family Funeral Directors

Trevor E.W. Hickton Ltd



About Us

Established in the Black Country in 1909, the Hickton family have been serving the community through four generations.

The business currently in its 3rd and 4th generation of ownership, identified the need for a new modern independent funeral director to serve the Birmingham and Solihull areas.

Many of the long established funeral homes in the local area have been sold to much larger corporations over the past 15 years and have no family members left involved in the business. W.H. Painter, for example, are owned by Funeral Partners, a large nationwide corporate company.

We are the only family owned funeral director in the area now.

With our family ownership we feel in a position to give a much more caring service when called upon, compared to large corporate companies. We also feel we can be much more cost effective in comparison to the corporate funeral homes.

The Basic Funeral Package £1400.00*

Including - Professional services, transfer from place of death, care of loved one, hearse, simple coffin, funeral director, bearers.

The Traditional Cment Funeral Package £2350.00*

Including - Professional services, transfer of your loved one from place of death, preparation and viewing of loved one in a traditional coffin, care of loved one, hearse, one limousine, funeral director & bearers. 4ft floral coffin spray, 40 order of service booklets, ashes scatter tube, donations box and 6 bereavement support sessions.

*cost excludes cremation, burial, doctors or minister's fees.

All costs are correct up until April 2021

Golden Charter
Smart Planning for Later Life



ADVERTISE YOUR BUSINESS HERE

For more information on how to advertise
in any of our titles please call:

07805 430191 or

email: editor.postgroup@outlook.com

320 Bradford Road, Castle Bromwich B36 9AD

Opposite Toby Carvery (The Bradford Arms) 24 Hour: 0121 747 7900

www.TEWHickton.co.uk

The Story of Castle Bromwich Parish Church (pt10)

By David L Adams

I hope readers will forgive my digressing from the architectural development of the church to write more about the owners of the manor in the 16th and 17th centuries.

At this time the building has reached its final "high medieval" stage, with the original stone chapel as the chancel to the timber framed nave, and a composite west end tower – all as shown in last month's illustration.

The manor was in the hands of the Devereux in succession to the Ferrers family. The Devereux were now Earls of Essex – "of the 6th Creation" but the title seemed something of a poisoned chalice and they held it from only 1572 to 1601 and, as noted below from 1604-46.

The first Devereux Earl, Walter, was also 2nd Viscount Hereford. He sought to serve his Queen, and improve his finances, colonising the north of Ireland. His efforts were mired in problems, many of his own creation! He died in agony of dysentery at Dublin Castle in 1576.

The Devereux destiny, and debts, were left to the 9 years old 2nd Earl of Essex, 3rd Viscount Hereford, Lord Ferrers of

Chartley, Bouchier and Lovaine – "the poorest Earl in England!"

Robert Devereux went to Court as the protégé of Robert Dudley, Earl of Leicester, the Queen's favourite – and came to outshine him. He had an adventure filled life but what might be termed the arrogance of the Devereux finally drove him to rebellion against the ageing Queen and he was beheaded in 1601 at only 33 years old. The Queen died in 1603.

His son, another Robert, had the Earldom restored to him by the new King, James I in 1604 and became a friend of Charles I. With true Devereux perversity, he turned against the Crown in the Civil War and became a general in the Parliamentary armies. He died, childless in 1646 and that was the end of the Devereux Earldom of Essex.

Edward Devereux, the builder of "our" Hall, married Katherine, daughter of Edward Arden of Park Hall and was MP for Tamworth in 1588/9 and sheriff of Warwickshire in 1593/4.

After the execution of his older half-nephew Robert in 1601, he and several relatives were reported to Robert Cecil, the Queen's Chief Secretary for "holding a clandestine meeting in Wolverhampton"

but no action was taken against them – not plotting- dividing family finances?

Under James I he paid to support the suppression of an Irish rebellion and in 1611 received one of the first baronetcies "of Castle Bromwich". He was knighted in 1612 and died in 1622, when his son – another Walter inherited the estate, but Edward's wife, Katherine (nee Arden) remained in possession of the Hall until she died in 1627.

When the third Earl died in 1646 and the Earldom ceased, Walter claimed the Hereford Viscounty and the family hold it to this day – but the Viscount no longer lives in Hereford.

The final Devereux occupant of our Hall was Lady Anne, the wife of Sir Essex, Walter's son. In 1657 she sold the Hall and estate to Sir Orlando Bridgeman who bought it for his son John on the occasion of his marriage.

Sir Orlando was an eminent lawyer and MP who in 1667 would become Lord Keeper of the Great Seal of Office for Charles II. He assisted in prosecuting the Regicides.

My sketch shows the Hall as built by Sir Edward Devereux – Sir John Bridgeman would later raise its height to what we see today.



Solihull 'a beacon of opportunity' thanks to employment and start-ups boost – report

Solihull is cementing its reputation as a "beacon of opportunity and prosperity" thanks to a healthy increase in employment and new start-up businesses, according to a major economic report.

The biennial 'Doing Business In Solihull: An Economic Snapshot' report, produced by the Solihull Chamber of Commerce, reveals the borough is flying the flag for the West Midlands in a number of key economic metrics such as business births, jobs and education.

And the borough is geared up for a bright future thanks to projects such as HS2, the UK Central Hub and the Town Centre Master Plan, according to the report sponsored by Prime Accountants.

The economic snapshot launched on Thursday as part of the Solihull Chamber's Expo at the Best Western Plus Manor Hotel in Meriden.

It highlights the borough's strong recovery from the effects of the Covid-19 pandemic, with the employment rate increasing by 2.8 per cent to 77.8 per cent in the year to September 2023. This is compared to the national average of 75.7 per cent and the West Midlands Combined Authority area figure of 70.3 per cent.

Furthermore, 80.9 per cent of Solihull residents are economically active compared to 75.3 per cent in the WMCA region and 78.8 per cent nationally.

Solihull is also proving to be fertile ground for new businesses – with a six per cent increase in the number of companies forming in the borough. This compares to a 13 per cent decrease across the West Midlands.

In addition, the number of business 'deaths' the Solihull borough decreased by 15 per cent between 2022 and 2023.

Gemma Dilkes, policy and projects officer at Greater Birmingham Chambers of Commerce, of which the Solihull Chamber is part, said: "Since the 2022 edition of this report was published, Solihull has made great progress in recovering from the difficulties that the COVID-19 pandemic brought about.

"Recent growth in the borough's employment rate and jobs density have been above the regional and national averages, which have both contributed to maintaining Solihull's strong figures for median gross weekly pay for full-time workers and gross disposable household income.

"Solihull's educational institutions are producing robust academic results when looking at attainment at the regional level and is largely in-line with performance nationally, which is helping to forge a strong pipeline of talent to fulfil employer's skills needs and to grow a dynamic entrepreneurial landscape.

"The borough's recent increase in business births and the lower-than-average business

death rate prove that the borough is an excellent place to grow a business, which is in addition to other comparative advantages such as its prominent and convenient location and recent investment in public transport hubs."

Kevin Johns, vice-president of the Solihull Chamber and managing director of Prime Accountants, said: "This report illuminates the diverse tapestry of our community, showcasing not only our thriving businesses but also the rich talent and potential that define Solihull's economic landscape.

"Solihull boasts 8,025 businesses spanning key sectors such as Administrative and Support Services, Retail, Manufacturing, Professional, Scientific and Technical Activities, Transport, and Health and Social Activity.

"These sectors, coupled with our highlyconnected transport infrastructure and anchor institutions like the NEC and HS2, form the bedrock of Solihull's economic prowess.

"In addition to our vibrant business community, Solihull prides itself on its commitment to education and innovation.

"Looking to the horizon, the future of Solihull shines bright with projects like HS2, the UK Central Hub, and the Town Centre Master Plan on the horizon.

"These initiatives underscore our borough's unwavering dedication to growth, development, and progress.

"As we navigate the opportunities and challenges ahead, let us remain steadfast in our commitment to making Solihull a beacon of opportunity, innovation, and prosperity for all."



Pictured (L-R): Kevin Johns (managing director at Prime Accountants), Gemma Dilkes (policy and projects officer at Greater Birmingham Chambers of Commerce), Tony Elvin (general manager at Touchwood) and Cllr Karen Grinsell (deputy leader at Solihull Metropolitan Borough Council)



OPEN 6 DAYS A WEEK

0121 789 6549

FAST, RELIABLE, PROFESSIONAL SERVICE WITH NO HIDDEN EXTRAS

- ⊗ 2000+ TYRES IN STOCK
- ⊗ BRAKES SUPPLY + FIT (CAR & VAN)
- ⊗ HUNTER 4 WHEEL ALIGNMENT
- ⊗ EST OVER 18 YEARS
- ⊗ PUNCTURE REPAIRS

Flaxley Tyres

FOR ALL YOUR TYRE NEEDS



Flaxley Alignment Centre

WE OFFER A FREE CHECK ON THE HUNTER ALIGNMENT SYSTEM



flaxleytyres

www.flaxleytyres.co.uk

Unit 1, Imex Business Park, Flaxley Road, Stechford B33 9AL

YARDLEY MEMORIALS

We pride ourselves on personal service and customer care

Yardley memorials offers a personal, sympathetic and professional service when you are faced with the painful and emotional task of choosing a suitable memorial for your loved one.



Call for a free brochure
Tel 0121 706 2473

200 letters free on new headstones



BRAMM

120 letters free on new Cremation stones (Birmingham and Solihull Cemeteries only)

Email yardleymemorials@gmail.com for any other inquiries
453 Stockfield Road, South Yardley, Birmingham, B25 8JH
Open Monday to Thursday 9am-4.30pm,
Friday 9am-3.30pm, Saturday 12pm-4pm

Yardley Memorials are also based inside Widney Manor Cemetery for new memorials and flowers

Sertec Group named as Company of the Year at the 'Metalforming Oscars'



CBM Award Winners 2024 (L): Darren Wilding, Joshua Wood (both G-TEM), Kayleigh Simm (KMF Precision Sheet Metal), Ben Higgins and Martin Hinckley (both Sertec Group)

A supplier of millions of components every day to cars, lorries and engines has been named as the Confederation of British Metalforming's Company of the Year at a prestigious event last night.

Sertec Group, which employs over 2200 people across ten global locations, beat off strong competition from the sector to win the main award, with judges impressed by 'its journey to excellence' that has seen it enjoy a major increase in productivity, improvements in on-time delivery in full and the implementation of a comprehensive employee engagement approach.

With 200 people in attendance at The Grand Hotel in Birmingham, the Coleshill Headquartered company was joined on stage by KMF Precision Sheet Metal's Kayleigh Simm (Apprentice of the Year) and G-TEM, who was a double winner on the evening (HSE Initiative and Energy Efficiency).

The latter, a global manufacturer of vehicle body structures, has demonstrated a clear passion for implementing ISO 45001 with the aim of creating a safer working environment, whilst its commitment towards Net Zero by 2035 has seen it introduce quarterly energy audits and commission a 200% increase in its solar power capability.

Emissions have decreased by more than a quarter (28%) because of these initiatives, with sales also growing by a staggering 56% due to major new business awards.

Steve Morley, President of the Confederation of British Metalforming (CBM), commented: "It has been another difficult year for the metalforming sector, who are facing up to global conflicts, continued supply chain disruption and high inflation.

"In spite of all this, our members have continued to show great resilience and innovation to post increased sales, export growth and investment in safety, people and new technology."

He continued: "This is illustrated by the winners at our Annual Dinner. All of them are striving to be the best they can be in their respective fields and, importantly, are committed to raising the profile of our sector and what UK manufacturing can do."

19-year-old Kayleigh Simm is putting 'girl power' on the industrial map after she was recognised as the CBM's Apprentice of the Year.

She joined Newcastle-under-Lyme's KMF Precision Sheet Metal in 2022 and her drive for engineering has shone through as she progresses within the company and, importantly, in the way she champions vocational learning to other young people.

This has seen her lead a KMF team at 15 school and college career fairs, as well as acting as an outstanding apprentice advocate on its Apprenticeship Open Day that attracted over 140 visitors.

Kayleigh is now setting her sights on undertaking a degree in Manufacturing Engineering.

Geraldine Bolton, CEO of the CBM, went on to add: "It is fantastic to have a female engineer win the Apprentice of the Year title, and this will no doubt help us attract more girls into our sector.

"Our Annual Dinner continues to be an excellent vehicle for promoting and celebrating the very best of the UK's metalforming sector. In addition to the awards, more than 200 guests also enjoyed an inspirational talk by Dave Heeley OBE, who has earned the nickname of 'Blind Dave' after raising hundreds of thousands of pounds completing marathons and other endurance challenges."

The Confederation of British Metalforming represents the interests of more than 200 UK manufacturers of fasteners, forgings, pressings, cold rolled and sheet-metal products.

Its Awards were kindly sponsored by Crowe UK, Greenfields Energy Group, Steel & Alloy Gonvarri Industries, and the University of Sheffield Advanced Manufacturing Research Centre (AMRC).

For further information, please visit www.thebcm.co.uk

Deborah Meaden says "I'm in" to Mary's Meals' Sponsor A School project




International school feeding charity launches Sponsor A School initiative with entrepreneur and TV star

Entrepreneur and Dragons' Den investor, Deborah Meaden, is backing international school feeding charity Mary's Meals' Sponsor A School project.

Mary's Meals started by feeding 200 children in school in Malawi in 2002 and now is providing school meals to more than 2.4 million hungry children every day in

18 of the world's poorest countries. The promise of a nutritious meal at school attracts these children into the classroom, where they can gain an education which can be their ladder out of poverty.

The Sponsor A School initiative invites people or groups to fundraise to provide school meals to an entire school. Supporters can simply choose the size of school they wish to sponsor, and they will be allocated a school in either Malawi or Zambia. Supporters can choose to make their donation upfront, or in stages, or begin to fundraise within their community.

Deborah says: "Helping the next generation in an increasingly difficult world is something I am deeply passionate about, and Mary's Meals is doing incredible work in attracting vulnerable children into education with a daily school meal.

"By sponsoring a school with Mary's Meals, you can ensure that every child in an entire school receives a daily meal, which will give them energy to learn and thrive in education and beyond. Sponsor A School is a rare opportunity to truly change the lives of hundreds of children."

Sponsoring a school will help children like Dorothy from Malawi reach their full potential. The introduction of Mary's Meals at her school has improved her daily life and given her the power to dream of a brighter future.

Dorothy says: "I am very happy to be here at this school. I like it here because of Mary's Meals. I have developed a hardworking spirit. My life is changing for the better."

Matt Barlow, Executive Director of Mary's Meals, says: "I am delighted that Deborah is backing Sponsor A School. It is an incredibly important initiative that helps Mary's Meals reach so many hungry children awaiting our support. This has a huge impact, not only for the children, but for their families and wider communities. Supporters who sponsor a school have a real sense of connection to their chosen school and to the children who eat our nutritious school meals. There are so many ways to get involved with Sponsor A School, whether as a group or an individual."

To find out more about Mary's Meals and Sponsor A School, please visit: www.marysmeals.org.uk/sponsor.

Community Growing

Laura Docker took on her first allotment plot in April 2021, and now has a large double plot in Coleshill, where she grows a variety of vegetables and flowers. In 2021, Laura won “Best Newcomer” at the North Warwickshire Allotment Federation awards, and in 2023 was awarded “Best Allotment” by Coleshill Town Council. In each edition, Laura will share her knowledge and tips for anyone considering joining the growing ‘grow your own’ community.

You can follow Laura’s allotment diary on Instagram, @lottieonthehill



June is the month where your growing space will really start to come to life. You’ll be able to start picking salad leaves and snipping chives to add to your meals, perhaps even some tomatoes if you’re lucky!

Unfortunately, along with the fabulous vegetable growth comes the nuisance of weeds and insects eating the fruits of your labour. But don’t despair and keep away from chemical treatments because all you need are companion plants and knowledge of the beasties!

Greenfly and aphids are a particular pest for gardeners, who I find particularly love my beautiful roses and other plants across the garden and allotment. The good news is that they make a delicious meal for the gardener’s friend – ladybirds! If you can, leave a small area of stinging nettles in your growing space, ladybirds love nettles as a place to hide and rest and you’ll be able to carefully relocate a few of them to areas of concern and let them snack away!

Frogs are also a great friend to have in your growing space, and even a washing-up bowl sized pond will provide a happy home to these webbed creatures. They will keep the population of pesky slugs under control without resorting to pellets and other methods, keeping your growing space healthy for both yourself and your garden’s eco-system.

If you are growing carrots in the ground, they may be attacked by carrot fly. Carrot fly is a small, black-bodied fly whose larvae feed on the roots of carrots and other plants such as parsnip, parsley, celery and celeriac. Alternating a row of carrots with a row of onions or spring onions, whose scent will confuse these pests and help to protect your crops.

Growing nasturtiums in your growing space will attract white cabbage butterflies. These beautiful looking creatures can have a devastating impact on your kale, broccoli, cauliflower, cabbages and other brassica plants. By strategically placing nasturtiums in the same areas, the butterflies will be drawn to the bright flowers instead – and

although they may appear to be destroyed, the amazing thing is that these flowers will grow back, and they are even edible. The seed pods can be dried and saved for planted out the following year, or they can be used in place of capers for a delicious addition to your dinner plate.

Placement of mint, chives and thyme are also great companion plants, giving off aromatic scents which confuse and deter a multitude of common garden pests from vegetable plants and flowers. Before you reach for chemical treatments, which can cause more harm than good in your garden, give companion planting (and ladybirds) a try!

Things to grow this month:

- There’s till time to grow runner beans and French beans, and these can now be sown directly into the ground.
- Beetroot can also be sown directly in the ground this month – you can also sow these in shallow seed trays and eat the leaves as ‘micro greens’.
- Cucumbers can be sown in individual pots or module trays, be sure to place the seed in ‘sideways’ to avoid rotting.
- Carrots can be sown now – if you are growing them in the ground, be sure to alternate a row of carrots with a row of onions to avoid carrot fly damage. Alternatively, sow carrots in a raised bed.
- Coriander is a quick-growing herb that can be sown in containers and picked as needed.
- Spring onion and salad leaves can be down in the ground or in large pots.
- Plant out your tomato plants in a warm, sunny position and make sure they do not get too dry.
- Potatoes can still be planted out, if planted into pots/bags then 5 tubers can be planted per 40L pot/bag – new potato sized crops will take around 10 weeks, with larger varieties taking up to 20 weeks.



The Coleshill School pupil in pole position for motorsport Career

A talented young racing driver from The Coleshill School is in pole position for a successful career in the motorsport industry after dedicating his spare time to winning on the racetrack.

Thirteen-year-old Jensen has been spending weekends karting for four years and is proving to be a top competitor, scoring third place out of 36 drivers in a recent event.

Jensen said: "When everything is going right for me on the track it's a great feeling. There's the adrenaline going round me. It's good fun trying to overtake people, going faster, but there's a lot more to it. Braking and setting the car up right are really important."

According to Jensen's dad, Scott, the young driver's love of motorsport started from an early age – although he wasn't named after famous Formula One star Jenson Button.

He said: "Jensen's always been car-mad. In fact, it's hard to believe, but his very first word was 'car'! He first went karting when he was six – we tried lots of different taster sessions and he ended up loving it. I've always loved cars myself, so I've supported him at every step.

"He's probably picked up the motorsport bug from me!"

With his ambition, hard work and passion, Jensen is on the road to an amazing career in the motorsport industry.

He said: "I'd like to be a racing driver, but I've got to be realistic. Engineering or working with cars would be great too."

Jensen's talent on the track has drawn support from family and friends. He's even managed to score two sponsors – EBC Brakes and A & P Fencing."

Also eager to support Jensen's budding career is The Coleshill School, which is part of the respected Arthur Terry Learning Partnership.

Scott said: "The school has been very supportive, especially Mr Smith-Childs, who always asks how Jensen's getting on. The school even encourages him to take a couple of days off for the championships. "It's great to see how much Coleshill value extracurricular stuff, even if it's not academic."

The skills Jensen has learned during his karting sessions extend beyond the track. Confidence and communication skills, as well as knowledge in maths, pressures and engineering, are laying great groundwork for Jensen's future.

Scott said: "Confidence is so important to his success, and he's earned a lot of respect. I've really seen him bloom in this environment, and he's made some friends for life.

"He's learned a lot about discipline too. He sets his alarm for 5.45 am on Saturday and Sunday, and the hard work has paid off. He's been in the National Series, racing all over the country.

"It's taught him he's only going to get out of life what he puts into it. He's put so much time into practice, and it's worked out for him. I'm really proud."

Ian Smith-Childs, ATLP Strategic Lead said: "We are so proud of what Jensen is achieving on the track – he's a great example to his classmates about how hard work and dedication can lead to results."



Castle Bromwich u3a

Castle Bromwich u3a had a most interesting talk entitled The Dog in your Medicine Cabinet by the Assistance Dog's charity Medical Detection Dogs.

We discovered that the dogs are trained to detect certain illnesses by smell and that they were extremely accurate.

The speaker, Mr Geoff Lambert, brought along his assistance dog Archie who was adorable and trotted around saying hello to the audience.

It could be the future of diagnostic medicine!

A big thank you to both our guests.

If you would like to join our u3a then please come to our next meeting at Arden Hall on the last Wednesday of the month at 1.30pm. It is £2 for a visitor which includes tea or coffee and biscuits. The next meeting is a quiz. Come and make new friends and learn something new.

Helen Abbott



BBC Gardeners' World Live announces exciting new features for 2024



Urban Gardens, a spectacular edible headline show garden by Adam Frost, orchids from all over the world, and new stages and workshops are just some of the exciting new highlights at this year's BBC Gardeners' World Live, returning to the NEC Birmingham from 13-16 June. It's the perfect summer day out for green fingered folks and first-time gardeners alike, with inspiring show gardens and floral displays to enjoy, achievable ideas to try at home, plants a-plenty to browse and buy, well-known gardening faces sharing expert advice, and hands-on workshops to dive into.

BBC Gardeners' World presenter Adam Frost's headline Show Garden, The Chef's Table, is sure to draw a crowd at this year's BBC Gardeners' World Live. The large, walk-through garden will be a vibrant celebration of home-grown produce, featuring a rustic outdoor cooking and eating space set amongst an array of tasty plants. Adam will be hosting a daily programme of 'plot-to-plate' themed conversations and delicious demos on his garden with chefs and culinary friends from sister event, BBC Good Food Show Summer, including James Martin, Michel Roux, and BBC Good Food's Cassie Best.

New for 2024 and designed to inspire town and city types, the Urban Gardens space, sponsored by Blue Diamond Garden Centre group, is packed with ideas, plants and products for creative containers, brilliant balconies and wonderful window boxes. On the Urban Gardens Stage, Ade Sellars (AKA The Good Life Gardener) will be hosting daily sessions by a line-up of expert urban gardeners, and there will be a Showcase Garden showdown between the UK's top young landscaping teams, fresh from their success at WorldSkills UK, the national youth skills event. Two talented teams will compete to create the perfect city garden, mentored by award-winning garden designer, Cherry Carmen. Blue Diamond will present their own feature garden, showcasing ten essential plants for urban gardens, with all plants featured – and more – available to buy in the dedicated Urban Gardens retail area.

Orchid lovers will be thrilled to hear that BBC Gardeners' World Live will be the new home for the British Orchid Council's annual International Orchid Show. This exciting 'show within a show' will be a major highlight of the breathtaking Floral Marquee and will feature displays by more than 25 - 30 specialist orchid growers, offering breathtaking displays and expert advice for orchid lovers!

Clive Lloyd and Nicky Wakley from the International Orchid Show said: "We can't wait to be in our new home at BBC Gardeners' World Live, sharing the secrets of

these exquisite plants with a huge new audience."

The BBC Gardeners' World Live Floral Marquee is always a treat for the senses with its heady scents, colourful displays by specialist plant growers and nurseries, plants to buy, and feature highlights. In this year's expanded Hot Off The Potting Bench walk-through gallery, visitors will be able to view brand new plants and varieties close-up as they vie for this year's Peter Seabrook Award for Best New Plant at BBC Gardeners' World Live. Horticulturalists, Lucy Chamberlain and Saul Walker will be hosting Plant Expert Workshops as well as offering one-to-one help at the popular Plant Expert advice desk and hosting garden tours and walks. Take a seat at the Floral Marquee's Let's Talk Plants stage to get floral advice from BBC Gardeners' World presenters, stage sponsor Hillier's plant specialists and special guests. Floral Marquee sponsor, Legal & General, will again host a lounge for their retirement customers.

Also new for 2024 is the Get Growing Stage, an exciting, informal, drop-in space that's dedicated to the joy of home growing. Garden Organic's Chris Collins will host a daily programme of top tips and growing advice, joined by a line-up of well-known 'Grow Your Own' gurus, including Jason Williams (Cloud Gardener UK), Hannah Reid, Adam Kirkland and Lydia Lakemoore. Chefs from The Pig and Lime Wood hotel will be hosting alfresco cooking demonstrations on-stage, next to The Pig Allotment Garden which marks the opening of the new The Pig on the Farm near Stratford-Upon-Avon in June.

Whether your garden is postage stamp or park sized, there's abundant inspiration at BBC Gardeners' World Live. Stroll along the avenues and take in the impressive Show Gardens by award-winning designers and teams, including Derby College with Derbyshire Historic Building Trust, Adam Marshall (AKA @greenfingeredcityboy) and Kate Mason for an NHS establishment in Lancashire & Pippa Probert will be presenting 'The Viewers Garden'.

Pick up interesting ideas for smaller gardens from the mid-size Showcase and Feature Gardens from designers including: A Plot Amongst the Chickens by Benjamin Shutler; Share My Space-With Nature by Carleen Osbourne; The Pig's Allotment Garden by The Pig (Homegrown Hotels); Nature's Embrace by Becky Sibley (Wild Thyme Designs Limited); Flora & Flavour by Hannah Reid; Take Me Home by Consuelo Franco (Franco Brain); Stop and smell the flowers by Julie Haylock (Sandhurst Garden Design). Plus border ideas from the ever-popular Beautiful Borders whose 2024 theme is 'Share My Space'.

In the Association of Professional Landscapers' APL Avenue Show Garden Competition, four member companies will be showcasing their skills, creating back garden designs inspired by the theme, 'The Good Life'. The entries this year include Anna Helps Garden Design with Costa Cadiz, Fenton Gardens with Lunatica, Dan Hartley Garden Design with Eco Oasis and Katerina Kantalis with The Mediterraneo Garden.

You're never far away from a familiar face at BBC Gardeners' World Live and visitors can enjoy some entertaining gardening chat at the BBC Gardeners' World Live Theatre. Presenters Monty Don, Adam Frost, Frances Tophill, Carol Klein and Joe Swift will be 'in conversation' with Nicki Chapman and swapping

summer garden tips with the BBC Gardeners' World Magazine editors. Theatre sponsor, British Garden Centres, will be hosting daily sessions with guests, Michael Perry.

Keen indoor gardeners can head straight for the new layout House Plant Hub designed by Hayley of Mint Plants with its tempting House Plant Market and Stage where host, Ellen Mary, and expert special guests will be sharing their secrets for happy, healthy house plants.

Shopping opportunities are a major attraction at BBC Gardeners' World Live with a vast range of plants for sale in the Floral Marquee, Plant Village, House Plant Market and new Urban Gardens zone. 100s of high-quality retailers will be on site, selling garden accessories, décor, tools, equipment and furniture, both inside and outside the show halls, with plenty of show offers and bargains to be had. There's a Plant Crèche for hands-free, hassle-free shopping and a car collection service available for heavier items.

The popular Health for Life Wheelbarrow Competition returns this year, nurturing the next generation of gardeners and growers. Children from local schools and nurseries will be creating wheelbarrow planters with a 'food and climate change' theme, sharing their designs with tens of thousands of visitors. There's plenty to keep young visitors entertained at the show too, like admiring carnivorous plants and bonsai in the Floral Marquee, joining The Conservation Volunteers for a drop-in seed sowing session, or enjoying fish and chips or an ice cream. Children aged five and under go free every day (ticket required) and under 16s go free at the weekend.

Tickets for BBC Gardeners' World Live include entry to the BBC Good Food Show Summer, featuring demonstrations, theatres, stages and talks, book signing, tastings and workshops, street food, and delicious food and drink to taste and buy. The show's foodie stars include Nadiya Hussain, James Martin, Michel Roux, The Hairy Bikers, Becky Excell and many more. Visitors can dine in style by booking a sit-down meal at the BBC Good Food Restaurant, inspired by the country's leading food website, bbcgoodfood.com.

Rachel Poletti-Gadd, Portfolio Director - Gardening Division at Immediate Live, organisers of BBC Gardeners' World Events, said: "From Adam Frost's headline Show Garden and Urban Gardens space to the Get Growing Stage, Plant Expert Workshops and more, we can't wait to share this year's exciting new highlights with visitors, along with the show's much-loved favourite features. We're also thrilled to be welcoming the annual International Orchid Show which will be a wonderful addition to our Floral Marquee. If you love gardens and plants, gardening and growing, or just enjoy a great day out with excellent food, drink and entertainment, there really is no better place to be this summer. Inspiration and new ideas to try at home, expert advice, famous faces, delicious food and unique shopping opportunities – BBC Gardeners' World Live and BBC Good Food Summer have it all!"

Tickets for BBC Gardeners' World Live at the NEC Birmingham (13-16 June), including entry to BBC Good Food Show Summer, are on sale now at www.bbcgardenersworldlive.com



Pet Page



Saying Goodbye

Let's be honest; this is the topic nobody ever likes to talk about. As many of you know, we recently said goodbye to Oscar and some of the decisions we made at the time I didn't even know were options when we lost our first greyhound. I wanted to share some of our experiences in case it can help others.

With Oscar, we said goodbye at home—this was a first for us. Our wonderful vet, who had been through so much of Oscar's journey with us, came to our house, and we let him go in his favourite spot. Although extremely sad, this felt also quite comforting and peaceful. We then chose to take Oscar to the pet crematorium ourselves, which again was the first and I found comfort in doing so. If this is something you are considering, knowing which services are local to you could be beneficial.

There is a company called Dignity Pets, which offers at-home farewell services for your dog. Their website is also a valuable resource to explore; they are also able to help you understand when your dog is nearing the point where difficult decisions need to be made. They offer questionnaires that can be helpful if your dog is unwell, and if you think the time is coming obviously, always seek medical advice. I haven't used these personally, but I have friends who have and said they were really impressed and comforted by them.

12 months ago we said goodbye to Belle. With Belle one morning, it was extremely clear she was very unwell, so we rushed her to our vets, left her there for investigations and within a short space of time, we had the call saying it was awful news. We got to say goodbye and were with her when she went.

We've also been in a situation where Josie, another of our greyhounds, collapsed while an inpatient at a

specialist vet, and we couldn't be there as she would have suffered and is unlikely to have survived while we travelled to her.

From some of those, I've learnt that having a rough plan in place has been very useful for us. For example plan A has been we would like them in the comfort of their own home. However if we had brought Belle home she would have suffered so we went with plan b (at the vets) and with Josie that wasn't even an option so do you need to be adaptable and do what's right for your dog.

Once you know it's happening, there are a lot of decisions.

You will be asked if you want to take your dog and leave them if they are at the vet's, if you would like an individual cremation, and what you would like to do with the ashes, whether you want them in a scatter tube or an urn.

Many of the decisions Jim and I have discussed way in advance of the situations arising with our dogs, such as whether we want them buried or cremated, whether we want to take them ourselves to the crematorium, and what we might do with the ashes. If it was an option, would we want them to be at home? Do we want our other dogs to see them during or afterwards? What do we want to do with the ashes?

I know it's tough, but I would really recommend considering some of this in advance. If you get that news, you are likely to be in such a heightened emotional state that trying to figure this out can be extremely challenging.

Honestly, Jim and I have been on the same page about some of this; some of it we haven't, and I am so grateful we had those discussions in advance. So when situations have arisen, particularly the ones with very little notice, we have both known the plan, and our focus has been on the dogs and supporting each other.

As for what comes after cremation, it's obviously a personal choice. For us, we have made different decisions for the different personalities. We have Louis in a greyhound urn that perfectly reflects his spirit. (see image) We have scattered in favourite spots, we have scattered in the garden, and then planted a bush in memory of them. I know people who have had ashes made into jewellery to keep a loved one close or

ornaments made. The decision is deeply personal, but having some consideration beforehand can ease the difficulty of making such choices during an emotional time.

We've been lucky to receive support from friends, family and particularly our dog friends and community afterwards. I also wanted to mention the Blue Cross; they offer bereavement services for you after the loss of your pets. It may be worth exploring the resources they provide, everyone handles things differently, but it's important to know there is help out there for you, and you shouldn't hesitate to reach out for help if you need to.

After losing your dog, some people start to think about welcoming a new family member into the home, and again, this can be difficult to think about. It's important to remember that no new pet can replace the one we have lost, but for some people, welcoming another into their lives helps with the grieving process. Others choose to wait a while, and some never take that step again; there is no right or wrong decision in this matter—it is entirely personal, and you should do what feels right for you.

The key message I wanted to share is that the process of saying goodbye to a cherished dog is a deeply emotional journey, it may not always go to plan, and you may need to be flexible, but having knowledge about available options can hopefully provide some comfort during a difficult time.



Birmingham Dogs Home - Forever homes



Karma

Breed: Akita **Gender:** Female

Meet Karma, a very typical 1 year old Akita who is looking for a home to call her own.

Karma is an active girl who thrives on exploration and enjoys playing with her favourite toys. She typically plays with quite independently and will exchange her toys for treats. Despite her independent nature, she has a sweet side that shines through once she's had the chance to get to know you.

Initially, Karma may be a bit nervous, especially around new faces and female individuals, however, she tends to warm up quickly once a bond has been established. While she may appear wary of handling at first, she's gradually learning to trust and can

be handled all over, though she may stiffen around her back end when unsure.

Karma does enjoy her walks and has shown a playful curiosity in wildlife and small furrries on walks. She can sometimes pull forward if she sees something particularly interesting, it is recommended to keep Karma on lead or on long lines when on walks as she doesn't have the best recall.

This lovely lady is not your typical lap dog; she values her independence and isn't particularly fond of cuddles or being overhandled. therefore, she would do best in a home with

older children, aged 16 and above, who understand and respect her boundaries, as she does enjoy her own space.

Karma does get on very well with other dogs at our centre, and while she enjoys the company of her fellow canines, she does exhibit food aggression, so will be looking to be the only dog in the home, with the possibility of walking buddies. Her food aggression is being actively addressed, and she is learning to sit and wait for her meals. Continued training and patience in the home are key to her success.

Karma is also undergoing muzzle

training which has been going well. This training has been used for vet visits and will need to be continued in the home.

Due to her Akita breed characteristics, Karma requires an experienced owner who understands the unique needs and quirks of Akitas and is happy to commit to multiple meets at the centre. She's a typical stubborn Akita who will benefit from consistent training and positive reinforcement.

If you are interested in adopting, please contact the centre on 0121 643 5211 to enquire.

Calling all dog owners in B46 and a bit beyond!



Are you looking for a reliable, qualified, and dedicated dog walker? Then Henry's Friends Dog Walking Service is here to help.

What I offer:

- 🐾 **Dog walking:** rural or town walks
- 🐾 **Pet visits:** check-ins to ensure your dog is happy and comfortable
- 🐾 **Pet sitting:** company in the comfort of your own home, when you can't be there.

Contact Michelle at Henry's Friends Dog Walking Service for info:

- ☎ Call or text 07757 699434
- 📷 instagram.com/henrysfriendsdogwalkingservice
- 📘 facebook.com/henrysfriendsdogwalkingservice
- 💬 07757 699434



- ✓ City and Guilds Technical Competence in Dog Walking qualified
- ✓ Canine Basic First Aid trained
- ✓ DBS checked
- ✓ Fully insured



ALL PLUMBING & HEATING JOBS

Finance NOW available through Kanda from **0% APR**



Boilers Service £60

- Boilers install & Service
- Bathroom Fitting
- All plumbing heating & Gas jobs

Contact us for a FREE quote



Call Joe on: **07792 470 504**
www.jpdeakin-plumbing.co.uk



READ OUR PAPERS ON THE GO

www.postgroupmidlands.com



the **PURPLE HOUSE CLINIC**

Mental Health & Neurodiversity Services

At the Purple House Clinic we understand that psychological health is as important as physical health. We believe that everybody deserves to be happy and fulfilled in life, and we are committed to helping people overcome, or adapt to, life's challenges.

Our Services

Delivered by a team of highly qualified and registered healthcare professionals, our services include:

- Psychological Therapy
- Autism Assessments
- ADHD Assessments

- ☎ 0121 820 7851
- ✉ birmingham@purplehouseclinic.co.uk
- 📍 Colleshill - with easy access from the M42

Interiors & Decorating



PLATINUM
INTERIOR DECORATING

Platinum June Update

Hi, we're back again.

Feature walls continue to be a popular choice when redecorating a room. Adding a different colour to an individual wall can provide a focal point and change the sense of space and dimensions of a room. Similarly, using a patterned wallpaper can enhance a room by creating a point of interest using colour and texture.

While the above is all true, so to is the opposite. A poor choice of colour or of which wall to use can have a negative effect on the sense of proportion in a room. With that in mind we'll have a look at some basic rules to be aware of when deciding on whether or not to include a feature wall in your project.

The first thing to consider is what you want to achieve in relation to the proportions of a room. If you have a long narrow room such as a lounge / dining room then using a strong colour on the long wall and a lighter colour on the two end walls will enhance the effect making it appear even more pinched together and more narrow. Sometimes in a room such as this a better effect can be achieved by using a feature colour on just the chimney breast if available.

On the other hand, if you use a strong colour on a short wall in a rectangle room it will have the effect of making the room feel squarer and more evenly proportioned. It is often said that using a bold feature colour on a longer wall in a room can make the space feel uneven and less desirable to sit or sleep in.

Another thing to consider in a living room is using a feature colour in the alcoves either side of the chimney breast. This can add depth to the room. Another very simple but effective technique is if there are shelves built into the alcoves to paint them the same colour as the walls. This will really enhance the effect that some thoughtfully placed ornaments or a lamp have on a room.

Also, you shouldn't feel limited to using one colour on a feature wall. A dado rail provides an obvious natural point at which to switch to a different colour but even if you don't have a dado rail there's nothing to say you can create your own line using masking tape and have two different colours on one walls. Using a darker colour on the bottom third of a room and a lighter colour above it can make a room feel bigger than it actually is.

When choosing colours the widely accepted wisdom is that dark colours make a room feel smaller and light colours make it appear larger. While this is often true it's more useful to think about colours as warm or cool. So warmer reds and yellows have the effect of moving towards you so make a room feel smaller while cooler blues and greys will have the effect of making the walls recede and increase the feeling of volume in a room. Conversely, as cooler colours such as bluest darker they start to make a room feel more cosy. A good example of this is Farrow and Ball's 'Drawing Room Blue'.

When using wallpaper for a feature wall it's worth considering choosing the paper before the colour for the rest of the room. Most paint suppliers are able to scan and match colours so if you take a sample of the paper into them they can match one of the lighter colours in the paper for you to use on the other walls. This will unify the overall theme of the room. When choosing patterned paper remember that an intricate pattern will make a room feel more cosy and a large pattern will make a room seem bigger, even in a small room. Another thing to consider is the texture of the wallpaper. Using texture on a wall can make a room feel cosier and warmer even if the paper is a similar colour to the rest of the room.

None of the above advice should be seen as set in stone. If once you've finished you're not sure about your choice we'd always advise living with it for a couple of weeks. When you've got the pictures back up and furniture back in the room the colours can take on a different personality. The worst thing that can happen is that you are not happy with the feature colour and need to re-do it. This isn't the end of the world- you've already done all the time consuming prep, re-painting one wall isn't a massive undertaking so don't be afraid to experiment.

ADVERTISE YOUR BUSINESS HERE

For more information
on how to advertise in any
of our titles please call:

0121 749 7502 / 07805 430191 or
email: editor.postgroup@outlook.com


**POST GROUP
MIDLANDS LTD**


PLATINUM
INTERIOR DECORATING

Contact Jim or Clare
for a free quote on:



0121 747 7202



**07814 566657
or 07792 508819**

**We are a husband and wife
painting and decorating team**

**All aspects of domestic and small
commercial projects undertaken**

- Free written quotes
- Friendly, clean and reliable service
- Advice available on colour matching



info@platinuminteriordecorating.co.uk



www.platinuminteriordecorating.co.uk



Create Your Perfect Kitchen
One to One Professional Advice, Guidance of Design to Ensure Perfection
Supply Only or Supply of Installation Service



Masterclass kitchens at *Julie English Interiors*
Studio: 205 Tyburn Road, B2 1HN | 0121 4342500 or Contact: julie@julieenglishinteriors.co.uk

Create Your Perfect Kitchen
One to One Professional Advice, Guidance of Design to Ensure Perfection
Supply Only or Supply of Installation Service




Masterclass kitchens at *Julie English Interiors*
Studio: 205 Tyburn Road, B2 1HN | 0121 4342500 or Contact: julie@julieenglishinteriors.co.uk



SHARE A STORY




contact:
serena.postgroup@outlook.com





FLOWERS

Landscape Gardening & Block Paving Specialists

- Block Paving
- Porcelain paving
- Resin Bond driveways
- Tarmacing
- Slabbing
- Drive Repairs
- Turfing
- Grass Cutting
- Fencing
- In-print concrete driveways

- Specialists in Natural stone/sandstone
- Garden Walls
- Garden Clearances
- Rubbish Removals
- Hedge Cutting
- Tree Felling
- Trees Lopped
- Trees Pruning



ALL WORK IS GUARANTEED & CARRIED OUT BY FULLY INSURED WORKMEN

Call for a FREE no obligation quote
T. 0121 770 0362 M. 07773 503816
flowers-landscaping.co.uk

LOCAL SERVICES



GODWOOD GLASS & GLAZING
Est 1982

Broken Glass Replaced
Broken or Misted Double Glazed Units
UPVC & Aluminium Window Repairs
Handles & Hinges Replaced
Window & Door Locks Fitted
All Types of Glass Fitted
No Job Too Small

FOR A FREE QUOTE CALL
Call 07787 804153 and I will call you
straight back
Your Local Castle Bromwich Glazier

Xtreme Tree Care

- Crown Thinning and Reduction
- Felling and Dismantling
- Pruning and Shaping
- Hedge Trimming and Removal
- Specialist Stump Removal

Fully Insured
All Staff Fully Qualified
20 Years Experience

For a free quotation from your
Local Tree Surgeon call
07951 332 401

11 Shawbury Cottages, Pump Lane, Shawbury, Coleshill, B46 2RW
xtreemetreecare@aol.co.uk

BABY collection

DID YOU KNOW THAT
LILIANN STYLED BY RYAN
HAS A BABY RANGE IN STORE?

- CLOTHES UP TO 12 MONTHS
- NEWBORN TOYS
- SUSTAINABLE NEW BABY GIFTS
- CHRISTENING GIFTS AND MORE ..

STYLED BY
Ryan

LILIANN STYLED BY RYAN | 92 HIGH STREET | COLESHILL | B46 3BL
VISIT US IN STORE. FOLLOW US ON FACEBOOK OR GET IN TOUCH 01675 466 809

ADVERTISE YOUR BUSINESS HERE

For more information on
how to advertise in any
of our titles please call:

07805 430191

or email:

editor.postgroup@outlook.com

Julie
ENGLISH
Interiors

WETROOMS - BATHROOMS - KITCHENS - BEDROOMS

Create Your Perfect Space
One to One Professional Advice &
Guidance Every Step of The Way
To Ensure Perfection
Supply Only or Supply & Installation
Service

Showroom: 205 Tyburn Road, B24 8NB 01214484290 or Contact julie@julleenglishinteriors.co.uk

READ OUR PAPERS ON THE GO

www.postgroupmidlands.com



Philip Seccombe outlines his plans for a third term after swearing the oath of office



Philip Seccombe has outlined his plans for the future after swearing an oath of impartiality, as he prepares to begin a third term as Police and Crime Commissioner for Warwickshire.

Mr Seccombe won the Police and Crime Commissioner election on May 2, extending his period of office for a further four years. He was first elected to the post in 2016 and again in 2021, before topping the polls for a third time last week.

Among his first acts was to swear an oath to serve all the people of Warwickshire, pledging to act with integrity, transparency and diligence and give voice to the public, especially victims of crime. He also pledged to ensure the police can cut crime and protect the public, respecting the operational independence of police officers, and to work with partners to ensure the safety of the community and effective criminal justice.

Setting out his priorities for the next four years, he said he wanted to:

- Further reduce crime, anti-social behaviour and re-offending.
- Continue to increase police officer numbers.
- Increase support for victims and survivors of all crimes.
- Reduce road traffic fatalities and serious injuries.
- Engage with and listen to residents and communities.
- Build further financial resilience for Warwickshire Police.

Reflecting on his election success, he said: “Firstly, I feel very humbled and privileged to be elected for a third term as Police and Crime Commissioner for Warwickshire. I want to thank all of those who voted for me in the recent election, however, from now on, I will be acting for all communities and residents of Warwickshire, without fear or favour.

“I’m now looking forward to preparing a new Police and Crime Plan. I will be getting out amongst our communities and residents, to listen to what they have to say and to feed that into my conversations with the Chief Constable and other senior officers.

“Over the last eight years and particularly during the course of the election, I’ve had many comments from residents about visibility of the police. I want communities to understand that the police are there to protect them, that there are increased numbers and they are doing everything they can to engage with and listen to residents. That will be a priority for me and I think this will also help with those who have a fear of crime.

“One of the most talked about issues in policing at the moment is trust and confidence. There have been nationally - and sadly locally - cases where police officers have not conducted themselves as they should. I will be holding the Chief Constable to account to root out those officers who do not behave well and indeed to make sure that we don’t recruit new officers and staff who have a history that is not becoming of the service.

“I also want to do more for victims over this coming four-year period. Victims of crime are not always put at the forefront of the criminal justice system, so I am going to work with criminal justice partners to ensure that they are properly represented, get a fair hearing and they get support during the process of going to court and giving evidence.

“Finally, I think we can continue to build a resilient, professional and efficient police force here in Warwickshire. I certainly aim to be part of that and to encourage the force to do everything they can to improve their performance and indeed their standing within the community.

“There is plenty of work still to do and I’m looking forward to working hard to ensure I deliver this for local people across the next four years.”



Local Sports



Water Orton United Football Club

A season of mixed fortunes for the Open Age and Over 35's side has finished in April, with a top 3 finish and a semi final appearance by the Open Age side being the highlights.

The Open Age side, managed for the last 15 years by Ricky Robinson, have enjoyed an excellent season in the Championship of the Oakbourne & Coronation League. They are 2nd at the time of writing, 6 points clear of the team in 3rd, although they have 2 games to play and a superior goal difference. A top 3 finish is assured though, and it is a massive improvement having finished bottom of the league the previous season. Karl Walker finishing with 20 goals from 17 appearances along with great contributions from Jack Eagles (14 goals) and Oliver Burgundy (13 goals). A loss on penalties in the semi-final of the John Hasson Super Cup was a huge disappointment though.



The Over 35's team, managed for the last 17 years by Dean Robinson, had a less impressive season unfortunately in the Central Warwickshire Over 35's league. Finishing 9th out of 10 was bitterly disappointing despite some very positive recent performances, however it was a season blighted by many injuries and player availability. Long serving goalkeeper Neil Jackson retiring meant a difficult search for a mid-season replacement, with Danny Holmes joining to replace "The Cat" between the sticks. Despite the poor

end to the season, blighted badly by the poor weather causing numerous pitch cancellations, spirits remain high and you will always find us in The Dog pub for a debrief after each game. We will go again next year and continue to abide by our club motto – Even The Bad Times Are Good!



Both teams continue to look to recruit players or people willing to help Dean or Ricky. If you are interested, please contact Dean (deanrobin83@hotmail.com)

During the year, the club secured a grant

from the HS2 Community Fund and we have used this to purchase replacement goalposts, replace the gate for the storage compound, and also purchase a set of junior goalposts. Working with the clerk to the Parish Council, and the council leader Steve, we are looking to promote the start of a junior team(s) to use the village playing field for 5-a-side games, ideally age group U7's or U8's. There is a suitable size area for a new pitch that will be used along with the new equipment available for use on the playing field. If you would like to get involved or be interested to learn more, please contact Neil Jackson (neiljackson0507@gmail.com).

Finally, a big thank you to Phoebe at the Groundwork UK team who handle the HS2 Community Fund grant scheme. It is available for all clubs or associations to apply for a grant funding and the upgrade will mean we can remove the old ground sockets on the field which were a continual trip hazard that were dangerous.

Doyle Beats Former Arch Rivals World Record



849 career strength speed stamina challenges and World Records was achieved at Claverdon Village Warwickshire. Paddy Doyle completed a half marathon carrying 120 lb backpack crossing the finish line in 3 hrs. 35 min. 48 sec, beating the previous record holder and former Royal Green Jackets soldier Mike Buss (GB) who set the feat in London in 2004, his time was 7 hrs. 32 min. Doyle had to contend with uphill inclines along the roads and country lanes, but he kept to a sensible pace reaching the finish line just under four hours.

The next big challenge will be Doyle's 850th fitness endurance title, which will be an outdoor duathlon attempt.

"I knew I took on a hard World Record speed marching and walking on tarmac roads, my whole body felt the impact but it was worth the pain especially as I beat a former arch rival."

Water Orton Bowling Club

Our 16 teams have now commenced their league and cup program for the 2024 season.

In the Monday Over 55s league our A team have won 2 games and the B team have won 1 game but lost two by the odd point and sit 5th and 3rd in their divisions.

In the Wednesday East Birmingham Over 60's league the A team are top of Division 2 with 6 wins without loss, the B team have won 3 games and are top of Division 3, whilst the C team are also top of Division 4 with the D team currently sitting 3rd in Division 6.

In the Wednesday night Erdington league our A and B teams are both 5th in their respective divisions.

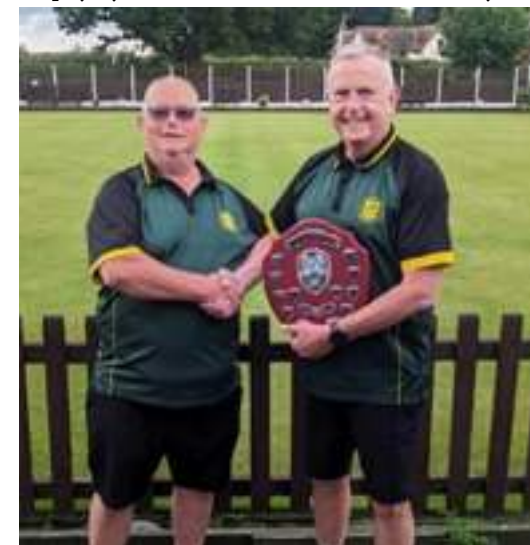
The Thursday night teams playing in the Sutton Benevolent League are both progressing well with the A team 4th in division Two having gained promotion last year with the B team sitting 2nd in division Four.

In the Friday morning Friendly league our A team have won 3 games and are 4th whilst the B team are currently 9th in their division.

Meanwhile the Saturday Parks league has started for both our teams, the B side compete in the morning league and are currently 2nd, whilst the A team play in the afternoon league are currently 5th. A good start to the season by all our teams.

On Sunday 12th May we held our First in-house competition, we had a fantastic turn out with

a record 26 entries, we saw some fantastic bowling throughout the day, and this year's Open Champion was our Club Captain Paul Johnson seen here being presented with his trophy by Committee member Keith Hanley.



Our next competition day will be Sunday 2nd June when we will hold our Pairs competition at 11:00.

We are always looking for new members, so if you would like to try the game we have equipment available for you to use so you try the game during our free coaching sessions on a Tuesday afternoon at 1:30 PM.

If you're interested please just call in or contact: Club captain - Paul Johnson (paul.wobc@gmail.com)



Coleshill Town F.C.

COLESHILL TOWN FOOTBALL CLUB

After a disastrous last season, Four Managers, 60 odd turnover of players, narrowly avoided relegation, Chairman Paul Billing has finally appointed the man he had been after all along.



Grant Joshua is the man to lead CTFC into next season, a team that only 12 months ago made the league play offs, top five, and he is confident that this is the start of a new era. Grant has brought in experienced coaches, Chris Rabone and Ross Harris as Assistant Managers and Jason Scott as Goalkeeper coach. Grant is working hard at redeveloping the team and has already signed up several players that he has been interested in. He has also organised pre-season,

Step 4 – Northern Premier League – Midlands

1	AFC Rushden & Diamonds
2	Anstey Nomads
3	Bedworth United
4	Boldmere St Michael's
5	Coleshill Town
6	Corby Town
7	Coventry Sphinx
8	Darlaston Town
9	Grantham Town
10	Hinckley LR
11	Long Eaton United
12	Loughborough Students
13	Lye Town
14	Quorn
15	Racing Club Warwick
16	Rugby Town
17	Shepshed Dynamo
18	Sporting Khalsa
19	Sutton Coldfield Town
20	Walsall Wood
21	Wellingborough Town
22	Worcester City

Promoted
Lateral Movement

COLESHILL TOWN FC JUNIORS

The Junior teams had their chance for honours in their very own Tournament on Saturday 18th May.

And Wow! What a day!

Coleshill Town FC Juniors first HOME Tournament and it went like clockwork.

SIX age groups, 31 teams, 72 games, 6 referees, 6 Runners Up, 6 Winners (2 CTFC Runners Up and 2 CTFC Winners).

Thank you teams, managers, parents, staff, volunteers, you all pulled together and made it a brilliant day that we can build on and make it better and better as the years go on.

The pitch was magnificent and the weather was kind to us! Couldn't have asked for more!

Well done CTFC JUNIORS!



Coleshill Town Colts U12 Triumph in Promotion Play-Off

Coleshill Town Colts U12 football team has secured promotion to Division 1 after a nail-biting victory in a promotion play-off match. Despite facing injuries throughout the season, the Colts displayed exceptional resilience and determination throughout the campaign. Finishing second in the league with an impressive goal difference, the team's hopes were initially dampened when it was announced that goal difference would not be considered in determining the top team. This led to a thrilling play-off game against Solihull Silhill, the former league leaders. In a tense and competitive match, Coleshill showcased their superior footballing skills, holding their opponents to a 2-2 draw after full time. The game then went to a penalty shootout, where the Colts' goalkeeper made three incredible saves. With nerves of steel and composure, the Colts emerged victorious in the penalty shootout, securing promotion to Division 1. The team's achievement is a testament to their hard work, dedication, and the support of their sponsors, Green Frog Mechanical. Congratulations to the Coleshill Town Colts U12 for their remarkable success!




PRE-SEASON FRIENDLIES

- July 6th Hednesford (H) Sat
- July 9th Cov Utd (H) Tue
- July 13th Lichfield (A) Sat
- July 16th Highgate utd (A) Tue
- July 20th AFC Bridgenorth (A) Sat
- July 22nd Romulus (A)
- July 27th Hanley Town (H)
- July 30th Trivdale (H)

and he also knows which teams he will come up against next season as the format of the Northern Premier League Midland Division has recently been announced.

Walk On

FLOORING

CARPET AND VINYL SPECIALISTS

OPENING TIMES

Mon - Fri 9:00am - 5:30pm
Saturday 10:00am - 4:00pm
Sunday CLOSED

TEL: 0121 770 9680



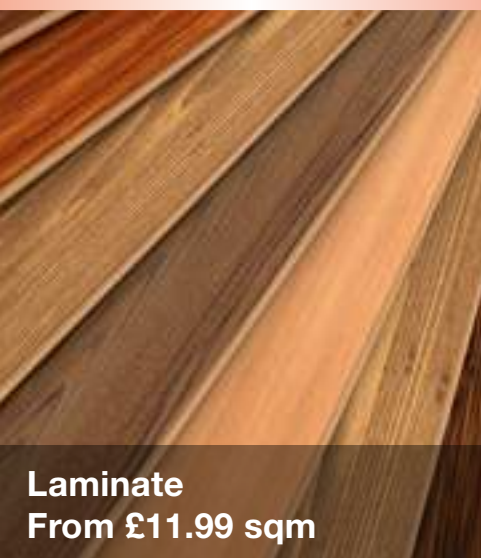
**HALF PRICE CARPET
REMNANTS WHILE
STOCKS LAST**



Vinyls
From £8.99 sqm



Carpets
From £6.99 sqm



Laminate
From £11.99 sqm



Rugs
From £30 each

Why choose Walk On Flooring?

- * Local fitters with over 25 years trade experience
- * Wide range of carpet and vinyl pattern books
- * All work is guaranteed and insured

Home Selection Available!

www.walkonflooring.co.uk

Quality room
size remnants
from only
£29.00



Like us on
Facebook

Showroom: Unit 3, Tile Cross Trading Estate, Tile Cross Road, Tile Cross, Birmingham B33 0NW