

Your Local Community Newspaper: The best source for local news & community information

# the CastleBromPost



READ  
OUR  
PAPER  
ONLINE

[www.postgroupmidlands.com](http://www.postgroupmidlands.com)

December 2023 Issue 78



[postgroupmidlands.com](http://postgroupmidlands.com)

**PICK ME UP FREE**

## ADVERTISE YOUR BUSINESS WITH US

For prices, media pack and more information

Call 0121 749 7502 / 07805 430191

or email: [serena.postgroup@outlook.com](mailto:serena.postgroup@outlook.com)



WISHING ALL OUR READERS A



# Merry Christmas

& HAPPY NEW YEAR



Do you suffer from hard skin, cracked heels, thickened & or discoloured toenails?

Worried your feet won't keep up with the family?

Do you struggle to manage your own feet?



**Make sure your feet  
are in safe hands**

tel. **0121 749 6313**  
[www.walshpodiatry.co.uk](http://www.walshpodiatry.co.uk)

Our highly skilled Podiatry led team can put you at ease and provide specialist treatment to help your feet look and feel wonderful again  
329 Chester Road, Castle Bromwich, Birmingham, B36 0JG [reception@walshpodiatry.co.uk](mailto:reception@walshpodiatry.co.uk)

Not tried us yet?  
**£5 OFF**  
with this Advert  
\*New Patients Only





*the* **ColeshillPost**

*the* **CastleBromPost**

The Post Newspaper Group is an independent hyper-local tabloid newspaper publisher distributing 2 titles with over 14,000 copies to homes and businesses in Coleshill and Castle Bromwich each month, free of charge.

Our main aim is to provide hyper-local news and information to the community where it would otherwise not be accessible. We also offer the most effective platform for local businesses to promote themselves to their target audience. This benefits the entire community and improves social-cohesion.

Any views, articles and columns expressed in this publication are those of the contributors and not necessarily those of the Publisher, nor indeed their responsibility.

## Advertising in our publications

**In order to deliver The Post free to our readers we rely on advertising revenue from local companies.**

We work with you to create the most appropriate package for your business, after all it's in our interest to make each advert work and keep everybody happy.

We can design professional artwork if needed and offer sound advice based on years of knowledge.

By choosing to advertise with us you are also showing your support for the community and the customers you hope to serve.

## Getting in touch

Sales:  
[editor.postgroup@outlook.com](mailto:editor.postgroup@outlook.com)  
07805 430191

General inquires:  
[serena.postgroup@outlook.com](mailto:serena.postgroup@outlook.com)  
0121 749 7502

## WHY CHOOSE HYPER-LOCAL?

People prefer to buy locally and they trust local print media above all else.

Show support for the community where your customers live.

Hyper-local content - every page dedicated to the local area.

Bringing the community together by making all information available in one place.

Affordable and effective advertising packages to help small businesses promote themselves better and cheaper.

Help to increase footfall on the High Street and boost attendance at local events.

Give groups, clubs and organisations space to promote themselves and let local people know exactly what is available on their doorstep.



# CIRCULATION

### *the* **ColeshillPost**

Coleshill North  
Coleshill South  
Coleshill Industrial  
Water Orton  
Curdworth  
Maxstoke  
Shustoke

Lea Marston  
Marston  
The Whitacres  
*Also dropped in  
Minworth*



### *the* **CastleBromPost**

Castle Bromwich Hall  
Park Hall  
Parkfields  
Green Lane West  
Green Lane East  
Chester Road West  
Chester Road East  
Bradford Road

*Also dropped in  
Shard End and Marston Green*



All our papers also get put in local Libraries, Pubs, Clubs and Garden Centres.

**KAVANAGH'S**  
KITCHENS & BATHROOMS

**The Complete Service**

At Kavanagh's Kitchens and Bathrooms, we offer a comprehensive design and installation service with a 3 year warranty.

Partnerships with premium brands, including...



Visit our large kitchen & bathroom showroom established since 1989

Tel: 0121 604 6464  
32 East Meadway, Kitts Green, Birmingham, B33 0AP

[www.kavsbathrooms.co.uk](http://www.kavsbathrooms.co.uk)



the **PURPLE HOUSE** CLINIC

**Mental Health & Neurodiversity Services**

At the Purple House Clinic we understand that psychological health is as important as physical health. We believe that everybody deserves to be happy and fulfilled in life, and we are committed to helping people overcome, or adapt to, life's challenges.

**Our Services**

Delivered by a team of highly qualified and registered healthcare professionals, our services include:

- Psychological Therapy
- Autism Assessments
- ADHD Assessments

- 0121 820 7851
- [birmingham@purplehouseclinic.co.uk](mailto:birmingham@purplehouseclinic.co.uk)
- Coleshill - with easy access from the M42

**NEED EXTRA STORAGE?**

Store it from only

**£20**

per week



[www.absoluteselfstorage.co.uk](http://www.absoluteselfstorage.co.uk)  
07704 955750 | 01675 464446 | [hires@absoluteselfstorage.co.uk](mailto:hires@absoluteselfstorage.co.uk)  
Jubilee Industrial Estate, Gorse Lane, Coleshill B46 1JU





**Windows • Doors • Conservatories**

**Guardian Warm Roof Specialist**



Windows (UPVC & Aluminium)  
Doors (including Bi-Fold & Composite)  
Conservatories

Garage Doors  
Roof Lanterns  
Domestic & Commercial Work

**T 0121 730 1587 / 07732 561 569**  
**E matthew\_taylor10@sky.com**

32 Birmingham Road, Water Orton, Birmingham B46 1TH

# Santa Paws is coming to Town



Two local businesses, brand and web agency PLOTT and telecoms logistics company G Comms, are proud to announce their continued commitment to making a difference in the community. This year by supporting Lichfield based dog rescue charity, The Max & George Trust.

In the spirit of giving, they choose to forego buying traditional corporate gifts and instead make meaningful contributions to charitable causes. This year, PLOTT and G Comms are excited to stand alongside The Max & George Trust, an organisation devoted to rescuing and rehoming abandoned or homeless dogs.

In response to the Trust's request, the contribution includes essential items such as dog food, treats, toys and "Blitz" paper towels. PLOTT is grateful too, for the support of long-time client Fish4Pets, which has generously donated dog-treat advent calendars.

Rather than a monetary donation, this hands-on approach helps the Max & George's Trust find a new home for lonely dogs.

"We believe in the power of collective giving, and by supporting The Max & George Trust, we aim to bring comfort and safety to our four-legged friends in need," said Anna. She continued, "It's not hyperbole to say that dogs' lives are on the line. Together with our clients and partners, we can create a meaningful and lasting impact on the lives of these animals."

## PLANNING ON BUILDING AN EXTENSION?

With a huge stock of bricks and specialist staff we can find your ideal brick match to ensure your extension matches your current brickwork.



**Bad Match** ✘



**Good Match** ✔



Expert advice



Free brick matching service



1500+ brick types

**EH Smith**  
Builders Merchants

**Chester Road**  
Castle Bromwich, B36 0LB

**A Big THANKYOU**  
TO ALL OUR ADVERTISERS  
FOR THEIR SUPPORT  
IN KEEPING THE PAPERS GOING  
AND FOR OUR FABULOUS DELIVERY TEAM  
GETTING THE PAPERS TO YOUR DOOR



# Your trusted local Electrician

Do you struggle to find someone to carry out small jobs?

- ✔ Extra Lights
- ✔ Free Quote
- ✔ Whole Home WIFI
- ✔ Fully Insured
- ✔ New Fuse board
- ✔ Reliable Service
- ✔ Additional Sockets
- ✔ Fully Qualified
- ✔ Landlord and Homebuyer Reports

## Call Tom today

# 01675 591047

[www.finchhattongroup.co.uk](http://www.finchhattongroup.co.uk)



## Social business networking event

Jan 15th – 6pm til 8.00pm

- We meet up on the 3rd Monday of every month
- Relaxed informal business networking
- No Commitment
- Raise your business profile
- Meet like minded people
- Business card and leaflet table available (bring your literature)
- If you would like to sign up for future presentations (ask a member of the team)

Contact us

email: [networking@biznetlocal.co.uk](mailto:networking@biznetlocal.co.uk)

call: Serena 07805430191



**Price £5 per person**

Bar will be open for refreshments  
Tea and Coffee available



Check out our Facebook page.

**The Dog Inn Pub**  
2 Marsh Ln, Water Orton,  
Birmingham B46 1NW



**BUZZARDS VALLEY**  
Vineyard | Shopping | Artisan Markets | Fishing



**REAL CHRISTMAS TREES**

Available from end of November



**CHRISTMAS GIFT HAMPERS**

Made to Order for Personal Gifts or Corporate Promotional Hampers



VINEYARD TOURS  
NOW AVAILABLE

**VINEYARD TOURS**

May to October. Public or private group bookings.

Wine tasting included



**ARTISAN MARKETS**

Local Food, Gifts & Crafts, Wine & Gin Tasting, Pet-Friendly, Up to 60 Stalls. Every 2nd Sunday from March, 10am to 2pm - Our last markets for 2023: 12th Nov & 10th Dec

[www.buzzards-valley.co.uk](http://www.buzzards-valley.co.uk)

37 Shearall Drive, Tamworth, B78 3EQ

Telephone: 0121 308 1951

Email Address: [info@buzzards-valley.co.uk](mailto:info@buzzards-valley.co.uk)



# ORCHARD NURSERIES

**1973 - 2023**

*A very Merry Christmas and Happy New Year to all our customers, and a big thankyou for all your support this year.*

Our Beautiful Nordman Nonshed Christmas Trees are here - up to 12' tall, while stocks last!!

Handmade Holly Wreaths and Crosses, made onsite.

Our Christmas shop and Gift shop are bursting with decorations, cards, baubles, gift boxes, reindeer, scarves, handbags, purses and so much more.

Bowls of hyacinths, Christmas arrangements, Gorgeous Camellias- full of buds, winter flowering shrubs eg Mahonia.

Garden Ornaments, Bird baths , Bird tables and Bird food.

Logs and coal.



## Visit Santa in his Grotto and make reindeer food with Mrs Claus

Sunday 17th December 10am - 2pm

Saturday 23rd December 10am - 2pm

Sunday 24th December 10am - 1pm

£7.50 per child including gift

### TUESDAY 19TH DECEMBER

Grotto visits available for preschoolers and SEN, children.

Grotto only visits £7.50 per child. (Any date)

**All above need to be prebooked and a deposit paid.**

**Call on 07450102855, or message our FB page.**



**ORCHARD NURSERIES** | BIRMINGHAM ROAD  
 WATER ORTON B46 1TG  
**0121 749 7266**

OPEN 10-5 MON -SAT 10-4.30 SUNDAY



*Tea, Coffee, Cakes, Light Snacks - Eat in or Takeaway*

## Our Christmas Afternoon Tea and mini Afternoon Tea available from end of November. Please call or message to book.

Come and enjoy our freshly cooked breakfast, Vegan and vegetarian options, hot and cold sandwiches, toasties, jackets, cream teas and of course homemade cakes - takeaway options available

Afternoon tea, prebooking required for up to 25 people

Whole cakes by preorder

Traybakes and brownies also available to order

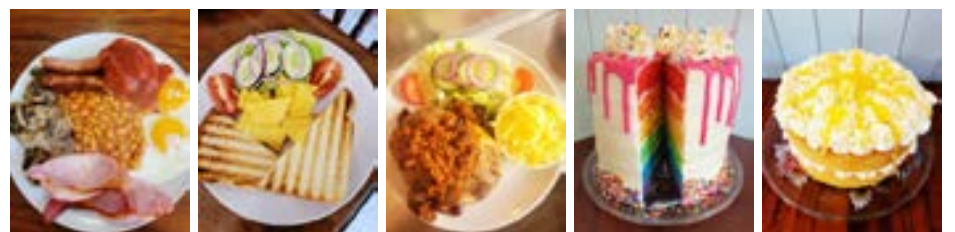
Check out our Facebook page for more details

Booking welcome, message us or call

**Open currently Monday/Tuesdays 9.30 - 2pm**

**Wednesday/Thursday/Friday/Saturday 9.30 - 3pm**

**Sunday 10.00 - 2pm**



Orchard Nurseries, Birmingham Road, Water Orton B46 1TG

Tel: 0121 749 7266 / 07450102855

Julie\_heenan@yahoo.co.uk



## The Shabby Attic

The shabby Attic is now buying precious metal, we will take a look at anything you bring in and give you a fair and honest opinion and hopefully a cash offer on the spot!

We are interested in any of the following:

- Broken jewellery
- Old Coins
- Old watches
- Silver Cutlery
- Silver Flatware
- Dental Gold
- Pocket Watches

Whether you have one item or a bundle, unsure what you have?  
No problem, we will take a look, free of charge.

Competitive prices paid, cash paid instantly or bank transfer.  
Home visits Available

Have anything unusual or unique? bring it to us, we may buy it from you.  
We work closely with Dealers and collectors to get you the best price!!

**HOUSE CLEARANCES AVAILABLE - at highly competitive prices**

**82 High Street, Coleshill B46 3AH Tel.07528964681**

Merry Christmas and Happy New Year to all our customers

## Balti Cottage

Fully Licensed & Air Conditioned

The art of Bangladeshi & Indian Cuisine

**15% DISCOUNT**  
on Takeaway collection orders over £20.00

**FREE HOME DELIVERY SERVICE**

COLESHILL | WATER ORTON | SHUSTOKE  
WHITACRE HEATH | CURDWORTH  
MARSTON GREEN | CHELMSLEY WOOD  
Minimum order £20.00

**Tel: 01675 - 464 122**  
**Tel: 01675 - 464 945**  
email: balticottage2006@gmail.com

Open 7 Days A Week  
Including Bank Holidays  
Sun - Thurs 5:30 pm to 10:45 pm  
Fri & Sat 5:30 pm to 11:45 pm

107 High Street, Coleshill  
Birmingham, B46 3BP  
www.balticottage.com

(Minimum order £10 for card transactions)



SCAN ME

**Taking bookings for Christmas!**




# CHRISTMAS OPENING TIMES

*Wishing you all Merry Christmas and a Happy New Year!*

Sun Christmas Eve .....	CLOSED	Fri 29th December .....	Open as usual
Mon Christmas Day .....	CLOSED	Sat 30th December .....	Open as usual
Tues Boxing Day .....	CLOSED	Sun New Year's Eve .....	CLOSED
Wed 27th December .....	Open as usual	Mon New Year's Day .....	CLOSED
Thur 28th December .....	Open as usual	Tues 2nd January .....	Open as usual

**I Station Buildings, Birmingham Rd, Water Orton, B46 ISR. Tel: 0121 776 7651**  Find us on Facebook

**Click & collect service with [www.waterortonfishbar.co.uk](http://www.waterortonfishbar.co.uk)**



## NOT MADE YOUR WILL YET? DOES IT WORRY YOU THAT...

Your children may NOT inherit all of your home or your hard earned savings... but the Government and others could!

*Care Fees, Inheritance Tax, Huge Legal Fees and more devastate thousands of families, often unnecessarily.*

**We come to you at a time to suit you for a FREE home visit.**

With the **RIGHT WILL** and advice, you can help ensure the **maximum possible** goes to those you love!

It all starts with a Will from **£95.00+VAT\***  
\*standard basic Will

**ACCORD**  
LEGAL SERVICES LTD

 Institute of  
Professional  
Willwriters

 APPROVED CODE  
TRADING STANDARD

**Confused? Concerned? Call Paul!**  
**0845 055 9415 | 07980 780709**  
**paul.palmer@accordwills.co.uk**

 **COLESHILL**  
Windows And Doors Ltd



**OVER 20 YEARS EXPERIENCE**

*At Coleshill Windows & Doors Ltd we believe in doing business the right way, by putting you first. That means no hard sales push, fair prices and only the highest standards of work.*

- ✓ Windows & Doors
- ✓ Composite Doors
- ✓ Conservatories
- ✓ Equinox Warm Roofs
- ✓ Roofline & GRP Roofs

**Tel: 01675 464 661**  
**Mob: 07789 855655**  
**www.coleshillwindows.uk**

*The local, family owned  
business you can trust!*

## Protect your Home

**Is your home your most valuable asset? Have you worked hard your whole life to pay for and maintain it?**

For most people, the answer to both of those questions will be a resounding yes. So with that said, why have so many people still not safeguarded their home the RIGHT way?

**Imagine this...**

You've made a Will, stating that, in the event of your death, you intend for your spouse to inherit everything, including your share of the family home. But what if your spouse needs care in later life? Your spouse may be expected to pay for their care themselves... but care fees are getting more and more expensive every year, costing anywhere between £26,000 and £52,000. How can they afford to pay for their care fees and leave some money as inheritance for your children?

This is an upsetting scenario... and unfortunately, it could happen to any of us without the right protection.

The sad truth is that around 200,000 family homes are sold every year to pay for care fees. Estates are drastically reduced- sometimes to nothing at all- to pay for care, leaving beneficiaries with little to no inheritance. The lower limit for care fee means testing is currently set at £14,250. However, your loved ones' inheritance could be even less than this simply because the home and other assets were not protected in the right way.

**Don't leave your home open to any risks.**

All of this can be avoided- with careful planning and professional advice, you can protect your home and savings so that your children can benefit as much as possible. Putting yourself in control means you'll prevent government authorities and other parties getting their hands on your assets.



**For Couples**

If you jointly own your home, we can protect your property with one of our powerful Protection Wills. These wills provide your partner/spouse with a right to continue to occupy the property and buy a replacement property if

necessary. The capital share you have in the property will also be protected. The property is also safeguarded from local authority means testing.

The ideal scenario is that half the property is protected from loss, and the other half is disregarded by local authorities. What this means for inheritance is that at least half of the property's shares will be passed down to your children.

This plan of action is applicable even if you have a mortgage!

Future stress and heartache for your family and beneficiaries can be avoided, but you must act sooner rather than later. If you fall ill and require permanent care, or if you unfortunately lose mental capacity for any reason, it will be too late to protect your home and assets.

**Act now!**

Sadly, many people put off planning for the future until its too late, leaving children and loved ones devastated to realise that the situation could have been easily avoided. The sooner planning is put into effect, the more effectively we can help you ensure that your assets go to those you love ... not those you don't!

**Do you have Savings?**

While the family home is usually the most valuable asset, we can also help you to protect your savings. Speak to us today to find out the best way to protect your assets.

Protect your Home and your Savings from unnecessary, avoidable losses. Accord can help ensure your loved ones benefit as much as possible from your estate.

Act today and protect those you love

If you want to be certain that your assets will pass down your loved ones or children you'll need more than a basic Will.

**Accord Legal Services Ltd will help you every step of the way.**

For more information please contact....

**Paul Palmer**  
**0845 055 9415 or email;**  
**paul.palmer@accordwills.co.uk**





# Take Away & Delivery Menu

OPEN MON - TUES 4PM - 10.30PM,  
 WED TO SAT 1PM - 11.00PM, SUNDAY 1PM - 10PM

## DESSERTS

New York Style Cheesecake, Slice.....	£3.50
Cheesecake slice.....	£3.50
Chocolate Fudge Cake, Slice.....	£3.50
Toffee Pie, Slice.....	£3.50
Oven Baked Warm Cookies, (4): milk chocolate, white chocolate.....	£3.99
Haagen-Dazs Ice Cream.....	£5.99
<small>Large: strawberry cheesecake, cookie &amp; cream, vanilla or chocolate</small>	

## FAMILY SAVER MEAL DEAL

Any 2 x pizzas, 2 sides &  
 1 Large Bottle

9"      12"      15"

**£20.99   £25.99   £30.99**

### CHICKEN STRIPS MEAL

5pcs Strips  
 Fries &  
 Can of Drink

**£8.99**

### COLLECTION SAVER MENU ONE

(Limited Time only)  
 Any small (9") pizza,  
 fries and small drink

**£9.99**

### MEAL FOR ONE

(Limited Time only)

Small (9") pizza, 1 side  
 and small drink

**£12.99**

### COLLECTION SAVER MENU TWO

(Limited Time only)

Any Med (12")  
 pizza

**£9.99**

### BUY ONE GET SECOND HALF PRICE

ANY SIZE PIZZA WHEN  
 U COLLECT

Collection Only. Not Valid with any other offer.  
 Prices based on Regular menu price. Free Pizza  
 will be equal or lesser value than the first  
 subject to availability

### BURGER & WRAP MEAL

Any Burger or Wrap meal  
 (Burger/Wrap, Fries &  
 Can of Drink)

**£6.99**

### CHICKEN NUGGETS MEAL

(Limited Time only)

Chicken Nuggets (5),  
 fries & small drink

**£6.99**

### DOUBLE SAVER MENU

(Limited Time only)

2 x 9" Pizzas for £17.99  
 2 x 12" Pizzas for £21.99  
 2 x 15" Pizzas for £26.99

### TRIPLE SAVER MENU

(Limited Time only)

3 x 9" Pizzas for £22.99  
 3 x 12" Pizzas for £28.99  
 3 x 15" Pizzas for £35.99

Delivery charge £2 within 3 mile radius, £10 minimum order. £1 Surcharge per additional mile. Please allow an average of 45 Minutes for delivery.

All Major credit cards accepted excluding American Express. Cheques not accepted.

Terms & Conditions: Offers and specials cannot be used in conjunction with any other offer or reduction. Please mention any special offer when ordering. Slice of America reserves the right to withdraw offers or products without prior notice. Prices may be subject to change without prior notice. All items are subject to availability. Some of our meat toppings, desserts and ice cream may contain traces of nuts. Stuffed pizza sizes are approximate prior to cooking. Any Errors or omissions in the wording of an offer will not change the actual intended offer and cannot be redeemed. All prices include VAT at the standard applicable rate.

**7 BIRMINGHAM ROAD, WATER ORTON B46 1SP • TEL: 0121 748 1648**  
**Quick & easy ordering online - only at [www.waterortonpizza.com](http://www.waterortonpizza.com)**

Find Us on Facebook:  Waterortonpizza • Food Standards Agency  5 STAR Hygiene Rating



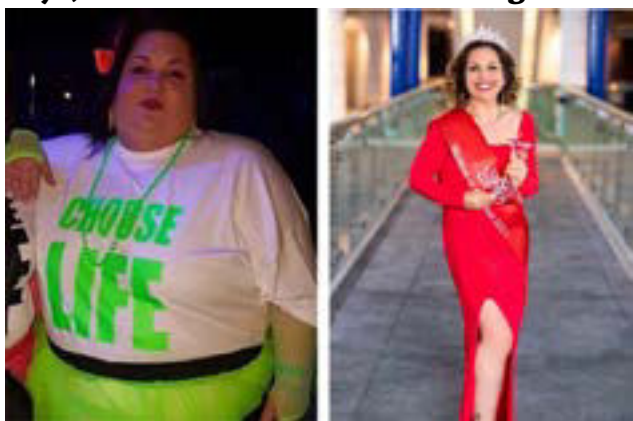
# Hello from your local Slimming World groups



So much is happening in our groups as we head towards Christmas and then the New Year. One of the things the team are really excited about is our brand NEW, new member pack. Not only will all new members joining us receive our new pack, we will also be giving one FREE to every one of our existing members for a limited period starting the week between Christmas and New Year as our gift to them. As we promise, our doors are open 52 weeks a year so there is still time to join and get some support to manage the challenging weeks up to and over the festive season. This month we want to share our recently crowned Woman of the Year with you. Kelly has lost an incredible 18 stone....what a story to end the year with!

Wishing you all a Merry Christmas & a happy and healthy 2024... Toni x (07971 686 698)

**'I saved my life by losing 18st – and these days, it feels like a life worth saving'**



**Kelly Barker, 43**

**Starting weight 28 ½st Weight now 10 ½st  
Height 5ft 3ins**

Kelly Barker feared she might not be around for her son's future. Now, she's the active, inspirational mum and teacher she always wanted to be and will be enjoying celebrating the festive season as our Woman of the Year 2023!

I'd struggled with my weight all my life. As a child, I was put on a special diet and had to be weighed at school.

While the other kids were eating battered cod and chips, I had to have separate meals on my own – usually something bland like boiled fish and potatoes. It made me believe that weight loss was miserable, embarrassing and shameful. It didn't work either – I gained weight every year into my adulthood.

When I went away to university, it was like the floodgates had opened! All the things I wasn't allowed as a child were suddenly available to me and my weight shot up. I'd try to slim down occasionally, but the only way I knew how was to cut out the foods I loved and follow some crazy fad diet I couldn't stick to.

### Feeling out of control

After I graduated, I found my weight affected my job as a teacher, too. I often felt like a hypocrite – especially whenever I was teaching the children about the importance of eating healthily and being active. My joints and back would be in agony after a day on my feet, too. I'd plaster on a smile, but inside I felt like a fraud.

My big wake-up call came when my GP recommended weight loss surgery. After that appointment, I went away and researched the procedure – and discovered that my weight meant the anaesthetic would be risky for me. I just couldn't shake the fear that I might die on the operating table...

### My first night in group

My cousin, Fiona, was a Slimming World Consultant. She'd been gently encouraging me to join her group for a long time, but I'd never felt ready. Deep down, I was worried it would be yet another failed weight loss attempt.

How wrong I was... From the moment I joined her group in May 2018, I was surrounded by warmth, kindness and compassion. Standing on the scales for the first time was daunting – I was terrified I'd be too heavy for them to weigh me (thankfully I was wrong about that, too!). Although the number was frightening, it also felt like the start of something positive.

Fiona told me that she'd never give up on me and she kept that promise. She was with me every step of the way – and so were the rest of the group. They helped me to really believe I could do it, and that was a huge turning point for me.

### Becoming a confident cook

It was easier than I'd expected to get to grips with the Food Optimising plan. I'd never cooked from scratch before, so I started by picking simple recipes with only a few ingredients.

As I became more confident in the kitchen, I experimented with new dishes and found I could recreate all my old favourites, like curries, pizzas and Chinese dishes, with a few slimming-friendly adjustments.

I'd been in a battle with food for most of my life, so being shown that I could eat generously, never go hungry and enjoy my meals while losing weight... Well, it was genuinely life-changing.

The children at school often ask me, 'What's in your lunch bag today, Mrs B?' and these days, I'm proud to show them the plentiful, colourful, delicious food I've made.

### Life just kept getting better

Losing 18 stone has obviously been fantastic for my health and confidence, but by far the best thing about losing weight is the relationship I now have with my son, Josh. I no longer feel like I embarrass him, and he tells me he's proud of what I've achieved. He's a county and regional-level swimmer, and being more in tune about activity and nutrition has brought us so much closer together.

I've got lots more energy too, so when Josh suggests fell-walking, rock climbing or kayaking, I'm excited to get involved rather than worried I'll be over the weight limit.

We've recently been on holiday to the Lake District. After a tough climb to the top of a fell, I looked out to the view below and suddenly felt tears welling in my eyes. I was thinking about how much I'd missed out on – so many beautiful views and experiences..

There's no doubt in my mind I've saved my life by losing weight – I'm so looking forward to life in 2024 and now it's a life worth living!

## Baileys Mocha Syllabub



These boozy syllabubs aren't too naughty... and they're very nice!

Ready in 10 mins (plus 3 hrs chilling)

Serves 4 | 4 Syns per serving

### Ingredients:

- 1 tsp instant coffee
- 200g plain quark
- 2 x 160g pots Mullerlight Smooth Toffee yogurt
- 4 tbsp Baileys liqueur
- 2-3 drops vanilla extract
- 3 level tsp sweetener
- 15g cooking chocolate
- 1 level tsp cocoa powder, to dust

### Method

1. Dissolve the coffee in 1 tbsp water. Whisk together the coffee, quark, yogurt, Baileys, vanilla extract and sweetener.
2. Divide the mixture equally between 4 dessert glasses, then chill in the fridge for 2-3 hours.
3. Meanwhile, melt the chocolate. Take a spoonful of chocolate and drizzle thinly over a piece of baking parchment in 4 separate decorative patterns. Allow to cool and chill until set.
4. When ready to eat, remove the syllabubs from the fridge and add a chocolate swirl to each one. Dust over the cocoa powder and serve.





# yes you can

with  
**Slimming  
 World**

**Monday**
**Castle Brom** The Baptist Church, 5.30 & 7.00pm Claire - 07917867577

**Tile Cross** St Peters Church, 4.00 & 5.30pm Nataley 07939 949136

**Yardley** St Edburghas Church Hall, 9.00am, 3.30 & 5.30pm Jacqui 07814 675180

**EXTRA SESSION ADDED** 7.30am (8th Jan)

**Tuesday**
**Coleshill** The Catholic Church (sacred Heart & St Teresa)  
 3.30pm, 5.00pm & 6.30pm Toni 07971686698

**Kingshurst** Seeds Of Hope, St Barnabas CH, 5.00 & 6.30pm  
 Diane 07432 123206

**Kitts Green** Evangelical Church, 5.30pm Becki 07864 872816

**Shard End** Aylesford Hall, 9.00am & 10.30am Donna 07516 726534

**Wednesday**
**Castle Brom** Arden Hall, 9.30am Diane 07432 123206

**Castle Brom** St Clements Church, 3.00, 4.30 & 6.00pm Nataley 07939 949136

**Marston Green** The Parish Hall, 3.30, 5.30 & 7.00pm Jacqui 07814 675180

**Water Orton** The Link, 5.30 & 7.00pm Jayne 07453 348184

**Thursday**
**Castle Vale** St Cuthberts Church, 5.30pm, Richard 07733820994

**EXTRA SESSION ADDED** 7pm (4th Jan)

**Chelmsley Wood** The Fordbridge Centre (by Asda), 5.30pm, Jacquie 07957133435

**Sheldon** St Thomas More, 4.00, 5.30, 7.00pm, Jayne 07453 348184

**Smiths Wood** SJB Centre, 9.00am, 5.00 & 6.30pm Nataley 07939 949136

**Friday**
**Chelmsley Wood** The Family Tree, 9.00am Jayne 07453 348184

**Sheldon** St Thomas More Church, 9.00am Claire 07917867577

**Saturday**
**Chelmsley Wood** Three Trees Community Centre, 9.00am Michael 07957 510533

**Chelmsley Wood** The Family Tree, 8.30 & 10.00am Jayne 07453 348184

**Castle Brom** The Baptist Church, 8.00 & 9.30am to Donna 07516726534

**Bordesley Green** St Pauls Church, 9.00am Maria 07974 805252

**Sheldon** St Thomas More, 7.30 & 9.00am Jacqui 07814 675180

[slimmingworld.co.uk](http://slimmingworld.co.uk)


Merry Christmas wishes  
 from us all at Slimming World x



*Slimming*  
 WORLD<sup>®</sup>  
 touching hearts, changing lives



**KINGSBURY**  
**GARAGE DOORS**

**YOUR LOCAL GARAGE DOOR SPECIALIST**

**ALL TYPES OF GARAGE DOORS & FRONT DOORS**



We are a family run business that carry out repairs and new installations

**Great Choice • Great Quality • Great Service**

**CALL US ON: 01827 236090**

email: [info@kingsburygaragedoors.co.uk](mailto:info@kingsburygaragedoors.co.uk)



**NEW  
MONTHLY  
EVENT**

# BREAKFAST BUSINESS NETWORKING

Starting 26<sup>th</sup> January 8am til 10am

VENUE: The Dog Inn Marsh Lane, Water Orton B46 1NW



**LAST FRIDAY OF EVERY MONTH**

Breakfast Bap  
Unlimited Tea/Coffee



**Are you a: Sole Trader,  
Small/Medium Business or Start up**

- Heighten your profile
- Advertising opportunities
- Meet like minded people
- Relaxed informal business networking
- Presentation and Guest Speaker opportunities
- No Membership or sign up required

**£15**



Check out our Facebook page.  
Read the papers on the go  
and see our latest press releases.

**Contact the team for more info**

 [networking@biznetlocal.co.uk](mailto:networking@biznetlocal.co.uk)  07805430191

**January's Guest Speaker Danny Greenway**

Danny Greenway from the Birmingham craft Centre will be the speaker on Monday 22nd January. He will be advising on his journey of how he has developed a leaking Cow shed into a multi functioning craft Centre.

The Birmingham Craft Centre now supports 45 other businesses from across the West Midlands.

He will also be sharing upcoming opportunities for pop-up stalls

**BIZNET EVENING NETWORKING  
3RD MONDAY OF EVERY MONTH**

  
**BIZNET  
LOCAL**  
 CONNECTING LOCAL BUSINESSES

# This joke isn't funny any more



**“This joke isn’t funny any more, it’s too close to home and too near the bone” so goes the words to the 1985 Smiths song of the same name. It’s unlikely that the Manc’ moaners could have foreseen the fiasco of HS2 back then but Morrissey’s lyrics describe exactly the situation we have now. HS2 has turned into a national and indeed international joke. However, it may be worse than that: setting aside the fact that HS2 has morphed into a tax payer subsidized, uneconomic white elephant it now appears that it could possibly be detrimental to our health.**

Due to its location as the junction of the Birmingham leg of HS2 and the now cancelled Northern leg, Water Orton is one of the busiest and most intensely worked sites along the entire route. It has caused mayhem for residents trying to go about their daily business and while causing immense frustration that seemed to be the extent of its effects – or so people thought.

A year or so ago a number of Water Orton residents began to experience unusual breathing difficulties and asthma-like symptoms. At the time these problems were just anecdotal and as we had recently come out of

Covid, it was possible that these symptoms were a legacy of that. However, as time went on and Covid became just a painful memory, the symptoms persisted and it became clear from experiences shared on Facebook that the breathing issues appeared to be especially affecting residents of Water Orton and the immediate area surrounding it. People began to wonder if the fine red dust that coated everything from cars to windows in the village could be causing the breathing problems that seem to affect so many of them.

To this end a small group of concerned residents began to mobilise and gather data to try to discover what was really going on in their area. The group has a diverse membership but most notable among the activists are former parish councillor Feli Freeman, Water Orton Heritage Group organiser, Jenny Deebank and Judith Cleaver a well known and passionate advocate for Water Orton. Along with others, all three women have been instrumental in highlighting not only the perceived health issues both physical and mental but also the effects on the built environment in Water Orton. They have appeared on ITV and BBC local news and continue to collate information in order to be able to hold HS2 to account.

As a long-time campaigner in Water Orton for other issues including traffic calming and speed reduction, Judith Cleaver has become a formidable force in gathering the hard evidence to try to show a link between the HS2 works and the effects on people’s health. By lobbying the local council and HS2 the small campaign group has been able to get funding for the installation of 5 air quality monitoring machines that will provide data in respect of the type and distribution

of micro particulates which can be breathed in and build up in lungs and airways. Unfortunately, the location of the monitoring stations were not subject to public consultation whereby residents with local knowledge could have been consulted as to the most effective locations, but something is better than nothing. Another initiative was the setting up of a “smart survey” to gather information from residents as to their health issues and also their location. Called the HS2 Health Impact Survey, this will attempt to show if there is indeed a causal link between the proximity of the HS2 works and the effects on local residents health. SmartSurvey is a U.K based provider of digital surveying and whilst it uses location data (but not home addresses) input by you, it is completely anonymous and no directly personal data is ever taken or stored. The survey is still running and can be found online at:

<https://www.smartsurvey.co.uk/s/WOHealthSurvey>

If you feel that your health has been adversely affected by the HS2 works near to you then Judith and her colleagues urge residents to participate in the survey as the more data that is harvested then the more likely it will be to show a correlation and lead to practical change. If you wish to get involved or for updates on the responses from HS2 then Judith can be emailed on:

[judithcleaver888@gmail.com](mailto:judithcleaver888@gmail.com)

It is often perceived that ordinary members of the public feel powerless to challenge big government or big business, that their concerns will not be taken seriously or at worst-ignored. This is a chance to make your voice heard when it may affect what matters most of all – your health and well-being.



## TURN YOUR OLD CAR INTO CASH THIS CHRISTMAS!



Visit our website today for your free valuation  
[www.sellmycar.co.uk](http://www.sellmycar.co.uk)



# COME HOME SAFE

## Teachers Teach, Drivers Drive

### Background

Many schools use their own minibuses to transport pupils for sports, cultural events, field trips etc. A significant number also use minibuses to provide home to school transport where there is little or no public transport or other alternative.

However, in our opinion, the law and regulations which govern such situations is both unjust and confusing, and is potentially ultimately unsafe for the pupils and staff involved and also the general public. The current law is not fit for purpose.

Many private schools are required by law to operate at the cutting edge of best practice of minibus operation by having an Operators (O) Licence. In contrast, state schools and other private schools, including those registered as charities, are covered by regulations, principally Section 19 under the Road Traffic Act 1985, which are much less well defined and frequently open to misinterpretation and error, with poorer safeguards for pupils and drivers.

### Our view

In our view, developed following discussion with many in the teaching profession and outside, is that there are two alternatives to this unjust and potentially unsafe situation:

- Legislate for best practice – which means all school minibus operators operate under an O Licence.
  - Do not use minibuses at all – use alternative means of transport for the pupils.
- These can co-exist and there are currently excellent examples of both models of practice in different schools.

To ensure safe practice, the law must be simple, succinct, straightforward and routinely enforced and recorded.

### CALL TO ACTION

We call upon the Government to ensure that the UK traffic regulations apply uniformly to all schools. Thus legislate to:

- remove Section 19 of the The Transport Act (Amendment) Regulations 2019 for schools in particular,
- bring in the obligation for all schools to operate under the Operators (O) Licence regime.

So we are looking for support from Government to redress this inequality in safety for young people and teachers alike urgently.

This is a matter above politics, it is a matter of life and death.

Stephen and Elizabeth Fitzgerald 07904101583

## Coleshill Ladies Probus

We held our meeting on  
Tuesday 28th November at  
the Coleshill Hotel.

After lunch, the speaker this month was David Richards on the subject of Bee keeping. David has been a member of British Beekeeping Association for 9 years and gave a very interesting and informative talk on bee keeping and the importance of bees.

Bees not only pollinate plants and flowers, but 90% of our vegetables and fruit as well.

There are three types of honeybees, the queen, the female workers, and the male drones.

Do you know how many eyes a bee has? None of us knew and had to guess, the actual number is five.

The life of a worker honeybee is only 6 weeks, and in a bee's life they only produce one 12th of a teaspoon of honey, which explains why honey is so expensive.

The Queen can live up to three years.

The biggest threat to honeybees is the Asian Hornet, which have been seen in UK since 2016. The Asian Hornets wait outside the hives to capture and kill the worker bees.

Everyone thoroughly enjoyed the talk and asked numerous questions.

We welcomed seven new members today, Jenny, Deanna, Rose, Judy, Karen, Eileen and Margaret

**If you would like to know more about ladies probus or would like to join, please contact Dorcas on 01675 464686**

**We meet on the last Tuesday of every month at the Coleshill Hotel**

## QUALITY CARE FOR YOU AND YOUR LOVED ONES

**We care for those living with:**

- ✓ Learning disabilities
- or autistic spectrum disorder
- ✓ Older people
- ✓ Adults
- ✓ Physical disability
- ✓ Sensory impairment
- ✓ Dementia



United Homecare Ltd

**We are a CQC registered service that aims to deliver an outstanding service and enable those to stay in their own homes.  
Call us now for a free assessment**

**0121 366 8171**

**info@united-homecare-ltd.com**

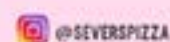


WEDDINGS. PARTIES. FESTIVALS. CORPORATE EVENTS.

SCAN HERE TO VIEW MENU



NIHAT@SEVERSPIZZA.CO.UK  
+44 7977 981007



@SEVERSPIZZA



SEVER'S PIZZA

FOLLOW US ON FACEBOOK AND INSTAGRAM!!

# DRINKS 4U

 <p><b>WOW DEAL!!!</b></p> <p><b>BAILEYS CREAM</b> 1LT <b>£12.99 each</b></p>	 <p><b>WOW DEAL!!!</b></p> <p><b>MOET CHANDON BRUT</b> 75CL <b>£33.99 each</b></p>	 <p><b>WOW DEAL!!!</b></p> <p><b>JACK DANIELS</b> 70CL <b>£17.99 each</b></p>	 <p><b>WOW DEAL!!!</b></p> <p><b>HARDYS VR WINES</b> 75CL V.A.S. <b>ANY 2 FOR £11.99</b></p>	 <p><b>WOW DEAL!!!</b></p> <p><b>BLOSSOM HILL RED, WHITE &amp; ROSE</b> 75CL <b>ANY 2 FOR £9.99</b></p>
--	---	---	---	--

 <p><b>BIRRA MORETTI</b> 12x330ML <b>ONLY £12.99</b></p>	 <p><b>WOW DEAL!!!</b></p> <p><b>BUDWEISER BEER</b> 15x300ML <b>£9.99 each</b></p>	 <p><b>WOW DEAL!!!</b></p> <p><b>COOP IRRESISTIBLE PROSECCO</b> 75CL <b>2 FOR £14.00</b></p>	 <p><b>WOW DEAL!!!</b></p> <p><b>CRUZCAMPO BEER</b> 10x440ML <b>£9.99 each</b></p>	 <p><b>GORDONS PINK GIN</b> 1LT <b>£19.99 each</b></p>
--	---	---	---	---

 <p><b>WOW DEAL!!!</b></p> <p><b>WHYTE &amp; MACKAY</b> 1LT <b>£17.99 each</b></p>	 <p><b>KOPPARBERG FRUIT GINS VAS</b> 70CL <b>£15.99 each</b></p>	 <p><b>WOW DEAL!!!</b></p> <p><b>GALLO WHITE ZINFANDEL</b> 75CL <b>2 FOR £9.99</b></p>	 <p><b>WOW DEAL!!!</b></p> <p><b>BAREFOOT WHITE ZINFANDEL</b> 75CL <b>2 FOR £11.99</b></p>	 <p><b>WOW DEAL!!!</b></p> <p><b>OXFORD LANDING SAUVIGNON BLANC</b> 75CL <b>2 FOR £11.99</b></p>
---	---	--	---	---

 <p><b>WOW DEAL!!!</b></p> <p><b>GRANTS WHISKY</b> 70CL <b>£12.99 each</b></p>	 <p><b>WOW DEAL!!!</b></p> <p><b>COURVOISIER &amp; MARTELL COGNAC</b> 70CL <b>£25.99 each</b></p>	 <p><b>BELVEDERE VODKA</b> 70CL <b>£28.99 each</b></p>	 <p><b>MCGUIGAIN WINES VAS</b> 75CL <b>ANY 2 FOR £12.99</b></p>	 <p><b>YELLOW TAIL WINES</b> 75CL V.A.S <b>ANY 2 FOR £13.99</b></p>
---	--	--	--	--

**ALL STORES OPEN 11AM-3PM ON CHRISTMAS DAY!!**

**DISPOSABLE VAPES • CIGARETTES AND TOBACCO • LOTTERY • SOFT DRINKS**

**CASH MACHINE/ATM @ CASTLE BROMWICH STORE!**

**GROCERIES NOW SOLD AT COLESHILL... BREAD, MILK, PET FOOD AND MORE!**

**358 BRADFORD ROAD,  
CASTLE BROMWICH,  
B36 9AD**

**0121 270 7150**  
MON - THURS 9AM-9PM,  
FRI & SAT 9AM-10PM SUN 10AM-9PM

**1-3 BRIDGE VIEW,  
LOWER HIGH STREET,  
COLESHILL B46 1BE**

**01675 620 581**  
SUN - THURS 10AM-8PM  
FRI & SAT 10AM-9PM

**1876-1878 PERSHORE RD,  
COTTERIDGE,  
BIRMINGHAM B30 3AS**

**0121 516 6530**  
SUN - THURS 10AM-9PM  
FRI & SAT 10AM-10PM



ALL MAJOR DEBIT & CREDIT CARDS ACCEPTED

# The Coleshill School Will Remember!



On Friday 10th November 2023. The Coleshill School held its annual Remembrance Service to commemorate former students of The Coleshill School who lost their lives in active service.

In front of a packed Hall of students and visitors, Sixth Form students proudly read out the names of 27 'old boys' from the first world war, 9 from the second world war and James Munday who was killed in Afghanistan in 2008. The last post which was followed by a two minute silence.

Mr Smith-Childs, Headteacher commented "At this time of war and suffering for so many people around the world it is so important for the school community come together. We are very proud of how well our students respect this occasion."

I would like to thank all our students, staff and visitors including, Cllr Sue Wallace, Deputy Mayor of Coleshill, and John Hoyle, former Deputy Headteacher, for attending our Remembrance ceremony. This is an important event for the school and I am so proud of the number of students who voluntarily attended the Remembrance Service and were so respectful today to commemorate our lost boys".



**Just Go!** UK EVENTS  
Holidays  
By Coach from Solihull

Reader travel

## ANDRÉ RIEU

Live in Liverpool



BLACK  
FRIDAY OFFER  
**SAVE 10%**  
on these tours  
Between 23rd-28th  
Nov 2023

Departing Thu 18 Apr '24

The classical-music phenomenon André Rieu returns to the UK with a sensational new show, including a date at Liverpool's M&S Bank Arena! Accompanied by his 60-piece Johann Strauss Orchestra, this evening promises to be filled with thrilling music.

### Your break includes

- ✓ Return coach travel from Solihull & Sutton Coldfield
- ✓ Overnight stay at a selected hotel (JG3 or JG4 rating) with breakfast
- ✓ Ticket to André Rieu concert at the M&S Bank Arena, Liverpool
- ✓ Return coach transfers from the hotel to the M&S Bank Arena
- ✓ En-route visit to a place of interest

Ticket upgrades available

2 Days by Coach *only* **£219**

Single Supplement £35

## RHS

Chelsea Flower Show



BLACK  
FRIDAY OFFER  
**SAVE 10%**  
on these tours  
Between 23rd-28th  
Nov 2023

Departing Fri 24 May '24

Dubbed 'the garden equivalent of Paris Fashion Week,' the iconic RHS Chelsea Flower Show is a highlight event of the gardening season. The best of the botanical world gather for this prestigious flower show to display the latest in horticultural innovation.

### Your break includes

- ✓ Return coach travel from Solihull
- ✓ Overnight stay at a selected 3 or 4-star hotel with dinner & breakfast
- ✓ Admission to the RHS Chelsea Flower Show

2 Days by Coach *only* **£289**

Single Supplement £35

## ANDRÉ RIEU - LIVE IN

his Home Town of Maastricht



Departing Thu 4 Jul '24

Armed with his 60-piece Johann Strauss Orchestra, the King of Waltz is returning to Maastricht in summer 2024 for his now legendary hometown concert! Come and discover what makes the violin maestro's concerts so magical, live in the picturesque Vrijthof Square.

### Your break includes

- ✓ Return coach travel & ferry crossings from Solihull & Sutton Coldfield
- ✓ 3 nights at a selected hotel in Belgium/Germany/the Netherlands (JG3 or JG4 rating) with breakfast
- ✓ Ticket to André Rieu concert at Vrijthof Square, Maastricht (category 4)
- ✓ Free time in Maastricht
- ✓ Excursion to Amsterdam/Brussels/Cologne (depending on your hotel location)

4 Days by Coach *only* **£479**

Single Supplement £150

For more information, or to book, please call

**03332 341 856** Quote PGM

033 numbers are free within inclusive minutes packages otherwise standard rates apply.

or visit us online at

**justgoholidays.com/PGM**



Operated by Just Go Holidays Ltd. Coach package holidays and short breaks are subject to Just Go! Holidays terms and conditions. Your booking is protected by Bonded Coach Holidays (BCH) and the Association of Bonded Travel Organisers Trust Limited (ABTOT); this is a government approved consumer protection scheme. Tours offered subject to availability and government guidelines. Errors and omissions excepted. Prices per person, based on two people sharing a double/twin room. Calls to 033 numbers are free within inclusive minutes packages otherwise standard rates apply. Prices are correct at the time of printing and will be honoured for bookings made on or before 7 days after publication.







## Scott Bevan

### History Column: Hammered coins

When I first began metal detecting, the one object that I thought (and hoped) I might find quite a lot of, were coins. Up until that point though, I'd not really given much consideration to the history of coins & the different variety of coin that I might come across. I was aware of pre decimal coinage & the old system of 240p to a pound, but that was about the limit of my knowledge. Almost immediately however, I heard the term 'hammered coin' mentioned by some seasoned detectorists. And they're the coins that I wanted to talk about today. They're absolutely fascinating coins and to me, each coin is like a miniature work of art, but in the interests of trying to keep the post fairly concise, I shall endeavour to cover the most interesting aspects.

Firstly, it's probably best if I explain to you exactly what hammered coins are. Essentially, hammered coins are coins that were produced by hand, before machines were utilised for coin manufacturing in the later half of the 1600's. Hammered coins were produced by placing a flan of metal (usually silver or gold) between two dies, before the upper die was struck with a hammer, leaving an image on both sides of the flan. I mentioned earlier how I see each coin as a miniature work of art, but each die was hand carved in reverse in order to leave the mirror image of its design on the flan. So as much as I love the uniqueness of each individual hammered coin, it could be argued that the actual dies were the masterpieces. As the coins were hand produced, they were prone to errors. Sometimes coins were double struck, leaving a repeated image. Sometimes the flans were off centre, meaning the image of the die in its entirety, isn't on the coin. And sometimes, the wrong die was used, resulting in what is known as a 'mule'. For instance, coins sometimes had 'mint marks' on the front (obverse) & back (reverse). These can be used to date a coin accurately & as such, the dies used at the time would've been used as a set, to make sure the same mint mark was repeated on both sides of the coin. Sometimes though, the wrong dies were used & the coins ended up having two different mint marks. These coins are referred to as mules.

Until the reign of King Edward I, there was very little in the way of 'small change'.

Pennies were the lowest denomination of coin abundant in circulation & this resulted in people cutting pennies into farthings & halfpennies. The design of the coins at the time, had a cross on the reverse & this was used as a rough guide to split the coins into halves & quarters. In fact, the word 'farthing' actually derives from the Old English word 'feorthing', meaning a fourth part. As you can probably imagine, cutting pennies into halfpennies & farthings wasn't an ideal way of creating halves and quarters and as such, it was susceptible to abuse. So much so that during the reign of King Edward I, farthings & halfpenny coins were produced to put paid to the practice of cut halves and cut quarters.

Coin clipping was a major problem during the age of the hammered coin & believe it or not, is the reason that today's coins have a decorated edge. Well, maybe it's no longer strictly necessary seeing as today's coins have absolutely no intrinsic value. However, it is the reason that coins began to be manufactured with a striped or decorated edge (this counter measure is largely attributed to Sir Isaac Newton), the purpose of which would be to highlight the damage if someone were to clip a sliver of the edge away. Essentially, that's what coin clipping entailed. The removal of some of the precious metal from the edge of a coin, before passing the coin on for its supposed worth. Clipping was rife at the time & could be very lucrative, using the slivers of silver to make bullion or even new coins. If discovered though, the punishment for clipping could be severe, sometimes resulting in execution. Debasement of the coinage was also a problem during the reign of certain monarchs. The lowering of silver content in the coinage, and the use of base metals. Most famously during the reign of King Henry VIII & the origin for his nickname 'Old Copper Nose', as it's said that the first signs of copper content that came through on the silver coins of Henry VIII's, generally began to appear around the nose of the king's image.

Hammered coins are both fascinating & beautiful coins. The term 'they don't make things like they used to', is probably overused in today's world. But with regards to coins & in particular, hammered coins, I think it's wholly appropriate



JustGo!  
Holidays

Reader travel

## SCARBOROUGH

Whitby & Historic York



BLACK FRIDAY OFFER  
**SAVE 10%**  
on these tours  
Between 23rd-28th  
Nov 2023

Departing Mon 19 Feb '24

Beloved for its pretty beaches, and classic charm, Scarborough is the perfect destination for a stunning five-day getaway! We enjoy a stunning excursion programme with visits to Whitby, York and the filming location for the TV series Heartbeat, Goathland.

#### Your break includes

- ✓ Return coach travel **from Solihull & Sutton Coldfield**
- ✓ 4 nights at a selected hotel in Scarborough with dinner & breakfast
- ✓ 2 for 1 bar (6pm-9pm) on selected drinks
- ✓ Entertainment every evening
- ✓ Excursions to Goathland, Whitby & York

Optional excursion to Beverley (£7pp)

5 Days by Coach *only* **£199**

Single Supplement £70

## LLANDUDNO

Snowdonia & Caernarfon



BLACK FRIDAY OFFER  
**SAVE 10%**  
on these tours  
Between 23rd-28th  
Nov 2023

Departing Mon 26 Feb '24

Immerse yourself in the beautiful landscape of North Wales on this great-value break where we visit some of the most stunning landmarks and famous Welsh towns and villages on the northern shores, with trips to Betws-y-Coed, Llanberis, Caernarfon and Conwy.

#### Your break includes

- ✓ Return coach travel **from Solihull & Sutton Coldfield**
- ✓ 4 nights at the Marine Hotel, Llandudno (JG3 rating) with dinner & breakfast
- ✓ Entertainment some evenings
- ✓ Excursions to Betws-y-Coed, Conwy, Llanberis & Caernarfon

Optional excursion to the Isle of Anglesey (£13pp)

5 Days by Coach *only* **£249**

Single Supplement £60

Operated by Just Go Holidays Ltd. Coach package holidays and short breaks are subject to Just Go! Holidays terms and conditions. Your booking is protected by Bonded Coach Holidays (BCH) and the Association of Bonded Travel Organisers Trust Limited (ABTOT); this is a government approved consumer protection scheme. Tours offered subject to availability and government guidelines. Errors and omissions excepted. Prices per person, based on two people sharing a double/twin room. Calls to 033 numbers are free within inclusive minutes packages otherwise standard rates apply. Prices are correct at the time of printing and will be honoured for bookings made on or before 7 days after publication.



For more information, or to book, please call

**03332 341 856** Quote PGM

or visit us online at [justgoholidays.com/PGM](https://www.justgoholidays.com/PGM)

033 numbers are free within inclusive minutes packages otherwise standard rates apply.



justgohols



JGTravelGroup



Castle Bromwich  
Hall Gardens

## News from Castle Bromwich Historic Gardens

We tend to get fewer visitors in the Gardens over winter, but we try to keep open for as long as it's feasible for our staff and volunteers.



There is still so much to look at and appreciate. Of course we love the colourful flowers of Spring and Summer and the carpets of golden leaves in Autumn but to be honest, we also love the sculptural aspects of the Garden over Winter; our numerous trees have lost their leaves revealing the mesmerising complexities of trunk and branches reaching out for the sky. We challenge ourselves to identify the tree from its shape...harder than you think. We also love the bare beds, cleared of this year's bulbs, annuals and vegetables. At this time of year staff and volunteers can often be seen crouched on paths digging out and trimming lawn and path edges to get them straight and neat for winter.

Castle Bromwich Historic Gardens are nationally protected as Grade2\*, but this protection is not because of the plants we grow, but for the shape and design of the garden as a whole, which has survived- pretty well intact - from around 1760. Few, if any, other gardens open to the public in the UK has had such a continuity. Which is why we pay such attention to the straight edges, the 'bare' formal planting, the trees and green shrubs - the style popular back then.

We pride ourselves on being pretty organic, not using artificially manufactured chemicals and working with the soil, plants and seasons; just as they may have done in the 18th century.

But our modern sensibilities and concern for wildlife, biodiversity and the planet sometimes come into conflict with the early eighteenth century design principles. All that neatness, bare earth and clipped corners rather reflected the idea that humanity had - and should have- control over nature- and boy, were they going to show it! The straight lines and regimented planting was meant to please our eyes, and weren't necessarily listening to the needs of the plant or the dependent wildlife.

### Neat solutions

These days we are much more aware of how important the Gardens and the surrounding Parkland are as a 'green' space; a breathing lung for our urban environment and a haven for wildlife.

Our Gardeners are constantly making micro decisions to ensure we do our bit to save the planet, and all its current occupants, as well as preserving and conserving the knowledge and legacy of the past.

We leave the fallen leaves, we use them and the grass cuttings to cover that bare earth, so it rots down and enriches the soil, we listen to the holly along the 125m Holly Walk - it really doesn't like year on year hard clipping to maintain a straight edge, so over the last three years we have let it recover and expand, it is far happier. The reward for this is that we have even more robins nesting, and the wet summer has stimulated a bumper crop of red berries - which will hopefully supply food for many creatures through the winter.

Why not come and visit the Gardens in winter too; crisp air walks, fabulous skies and still a plethora of visual treats.

### Winter opening and closing

This year the Gardens will close to the public at the end of Saturday 16th December.

We will remain generally closed until Saturday February 3rd.

During January we will be open during the week for Members and for Special Events only.

Hint hint—why not take out an annual membership for the Gardens - you can then come for a stroll anytime we are open, you get early notice of special events and discounts too. Check out our website, an individual membership works out at about 12p per day.

### 2024

Next year we will continue to work with Birmingham, Solihull and the West Midlands Authorities to make sure our work on the 30 acres of Nature Reserve on the Parkland can keep on going. Over the last 3 years we have begun to reverse the 40 years of benign neglect of this landscape. Rare habitats of acid grassland, wetlands and woodland have been saved and enhanced and the many volunteer groups who have helped us along the way are also recording the welcome return of both plant and animal species - including the wonderful Reed Warbler.



The Gardens alongside the Parkland truly are an Ark for nature .. and we have more than 2 of most things.

# The Story of Castle Bromwich Parish Church

During February, funding permitting, we will return to publishing paper versions of our annual programme of events, the first since the pandemic. Pop into the Courtyard Café around the end of March to pick up your copy.

The first event for 2024 is our very popular traditional Wassail on Sunday 28th January. Come and make a noise, dance, sing and be merry in the Orchard to wake up the spirit of the apple trees in the hope of a good harvest.

Please book online or in advance at the Gardens



**By David L Adams**

**We have reached 1175 and the existence of the Chapel of St Mary at Wody Bramewich has been "authenticated" by the granting of a charter for the monks of Tickford Priory to serve the Minster church of Aston - and it's daughter churches.**

This still leaves the structure unknown.

With its location at the northern edge of the Forest of Arden, its most likely form would be of timber – why would it be otherwise?

As an Architect I know that no building occurs spontaneously – it needs a 'patron' – a local person of power and/or money, probably both – or an organization.

The urge to build is one of Humanity's basic imperatives and generally the structure is the material close at hand.

When Gervase de Pagnell was forced to quit his castle at Dudley because it was destroyed as his punishment for supporting the crowned Prince Henry against his father Henry II in 1173/74, he may have relocated his home to Wody Bramewich – we have no evidence to the contrary, so why not!?

His granting of the care of souls in this area to the basically French religious house of the Cluniac Order, with its mother house at Marmoutier Abbey in Tours, France, may be seen as a bid for royal favour – after his previous wrongdoing.

he struggles for power within the Angevin royal family were extreme at this time – for example, the Prince Henry who Gervase de Pagnell had supported, was the only heir to the English throne crowned in the lifetime of his father. He then rose against him in an attempt to seize the crown!

After 1180, the help available to dissidents from our French enemies increased. Henry II had always striven to improve the government of England but when he died in 1189, he unfortunately left the kingdom in the warring hands of his sons Richard and John.

There is no evidence as to when our chapel was rebuilt in stone and it may be thought that these times of disorder were hardly propitious to carry out such work.

While stone can be thought of as the appropriate material for important buildings, the problems were sourcing adequate quantities of quality and just as critical, transportation on such poor roads.

Bill Dargue, our former church historian, sadly no longer with us, wrote in his on-line "Geology of Birmingham" that the Birmingham Ridge, marking the

Great Birmingham Faultline, runs northeast to southwest, from Lichfield to Bromsgrove.

This is a strip of new red sandstone about a mile wide.

Outcrops are exposed in several places, for example on Tyburn Road, but we have no indication where that used on our Chapel was quarried.

The nearest use of stone from around a similar time is on St. Nicholas ad Vincula at Curdworth and this was built in 1170 under the auspices of the Augustinian Canons of the Abbey of St. Mary de Pratis, Leicester, who were granted the right to 'present' a priest to the parish.

From this and our own case it seems the association of a country church with a Religious House calls for its structure to be given a 'suitable status' material.

The north elevation of Curdworth parish church chancel is pretty much how ours would have looked – my sketch is very much an approximation of our site and is the first in a series that shows how every stage in our building developed.

Watch this space for further revelations!



## What next?....

Everyone is feeling the cost of living pinch, which doesn't look like it will change for a while yet. Tiny charities like ours always struggle to keep our financial head above water. We are always grateful to our visitors – every visit and purchase of cup of tea goes directly to supporting the Gardens – and although we have a very large responsibility towards the historic spaces here, we know we want to share the privilege of this space with people. We'd love to hear your thoughts about what more we could be doing for and with our visitors and users ....Yes, that's it, we have a survey. You can complete the survey online here

It will remain open into the new year. Many thanks for your input.



# Castle Bromwich u3a



**This month Castle Bromwich u3a listened to an interesting talk about the evacuation of one of our former members during world war two.**

The talk was given by his son, Peter, from notes his father had made all those years ago.

We saw a selection of photographs and maps that showed us what life was like for the evacuees from Castle Bromwich.

Come and join us on the last Wednesday of the month at Arden Hall B36 9PB. Doors open at 1.30pm. There is plenty of car parking at the rear of the venue.

Next month we are looking forward to a talk by John Plumb, a local man with lots of farming experience.

If you'd like to come along and join us please do. It is £2 per visit and includes tea or coffee and biscuits. All welcome.

More information is on our website or ring Dave or Helen  
Further details on our website  
[www.u3asites.org.uk/castle-bromwich](http://www.u3asites.org.uk/castle-bromwich)

# News from St Clement of Alexandria Green Lane, Castle Bromwich (known locally as St Clements Church)



## Much is accomplished in the pauses of life. God renews our strength in those waiting times (Isaiah 40:31).

What a busy month October proved to be. At this time of the year, pride of place in Church is our knitted Harvest Table adorned with fruits and vegetables and this year we said goodbye to mini Stuart and hello to mini Fiona. Our thanks to Janet Coleing for arranging this for us. We have so much to be thankful for, our families, friends, colleagues and those we are yet to meet. There is a quote which says "in a world where you can be anything, be kind" this is so important to remember as we rush around in our daily lives.



Mini Stuart



Mini Fiona

Harvest is an important time of the year and many put their "thinking caps" on and joined St Clements' Harvest Quiz on Saturday 28th October. Competition was fierce with the aptly named "Scholars" winning the day. In keeping with the harvest, jacket potatoes with various fillings were served and with the clocks going back that night a "lie in" was certainly needed after all that excitement. Our thanks go to those that worked so hard to make this an evening to remember. To our Quiz masters who set all the questions and to all who came along THANK YOU.

Sunday Harvest Praise Service gave the opportunity, as in previous years for St Clements to support the work of the ingfisher Food Bank, which it continues to do throughout the year. Food items are important but it is worth remembering that items such as shower gel, toothpaste, nappies etc are also very much needed.

THANK YOU two words that can mean so much, but that we sometimes forget to say. We say thank you for so many things in our lives, especially in November of each year when we remember, pause and say thank you for the freedoms we all enjoy today. In the Garden of Memory at the front of the Church we planted a rose called Remembrance which serves as a reminder to us all of the sacrifices so many made for us. The red poppy worn at this time of year is a symbol of both Remembrance and hope for a peaceful future.

Our Annual Sponsored Walk took place on the 21st October and this year it was decided to support the Mary Bridgeman Tea and Coffee Lounge (formerly the Oasis Café) to be able to replace some of the items that unfortunately were no longer suitable for use in our tea room. The total amount raised was £556. So on a not so bright morning, 10 set off from the Church and 1 dog, who did the walk. The group included three members of staff from Colebrook Day Opportunities Centre for the Elderly who support our monthly Forget Me Not Café. Stopping off at their favourite "water hole" The Crafty Cow they all returned safe and sound where hot soup awaited their arrival. Our grateful thanks go to all our walkers, and their sponsors and to those that stayed behind to make sure refreshments were available on their return.

Hope on Smith's Wood Church is part of the Parish of St Clements and as such these are two of the PCC projects that take place at Auckland Hall, Sunbeam Close, Smith's Wood B36 9JR. Friendship Rainbow Stay and Play meet on Mondays during term time only from 9.30 – 11.30 am. Place of Welcome (bring your own craft) meet every other Monday from 12 – 1.30 pm. Should you be interested, the next date for your diary is 4th December. Plenty to do such as puzzles, play games, enjoy hot drinks and yes there are

even home made cakes - yummy!! Just go along or should you need further information give Ricky Sandiford a ring on 07756632148.

Christmas is a special time and St Clements invites you to join us as we come together to celebrate the birth of Jesus.

### 3rd December

@ 9.30 am Christingle and Toy Service

### 10th December

@ 11 am Holy Communion

### 17th December

@ 9.30 am Nine Lessons and Carols

24th December NO MORNING SERVICE

Christmas Eve Communion with Carols @ 7 pm

25th December - no service at St Clements. All are welcome at St Mary and St Margaret Church @ 10.30 for Christmas Day Communion

Have you got your 2024 diary? Well the first event for 2024 will be our Annual Beetle Drive on Saturday 9th March starting at 3pm. Once again we are grateful to Ann and Ian Wright who will be hosting and sorting out those Puds and of course how we play the game

As we come to the end of another year

**ST CLEMENTS CHURCH WISHES YOU  
ALL A VERY HAPPY CHRISTMAS AND A  
PEACEFUL NEW YEAR**

If you want to know more about our Services or Groups you can get in touch here:

Phone: 0121 748 5550

Church Website:

[www.stclementschurchcb.co.uk](http://www.stclementschurchcb.co.uk)

Facebook: [www.facebook.com/stclementschurchcastlebromwich](https://www.facebook.com/stclementschurchcastlebromwich)

Email: [office@stclementschurchcb.co.uk](mailto:office@stclementschurchcb.co.uk)

# YARDLEY MEMORIALS

*We pride ourselves on personal service and customer care*

Yardley memorials offers a personal, sympathetic and professional service when you are faced with the painful and emotional task of choosing a suitable memorial for your loved one.



Call for a free brochure  
Tel 0121 706 2473

200 letters  
free on new  
headstones



**BRAMM**

Email [peter@yardleymemorials.co.uk](mailto:peter@yardleymemorials.co.uk) for any other inquiries  
453 Stockfield Road, South Yardley, Birmingham, B25 8JH  
Open Monday to Friday 10am-4pm,  
Saturday 12pm-4pm | By Appointment Only

Yardley Memorials are also based  
inside Widney Manor Cemetery  
for new memorials and flowers



**OPEN 6 DAYS A WEEK**

**0121 789 6549**

**FAST, RELIABLE, PROFESSIONAL  
SERVICE WITH NO HIDDEN EXTRAS**

- ⊗ 2000+ TYRES IN STOCK
- ⊗ BRAKES SUPPLY + FIT (CAR & VAN)
- ⊗ HUNTER 4 WHEEL ALIGNMENT
- ⊗ EST OVER 18 YEARS
- ⊗ PUNCTURE REPAIRS

**Flaxley Tyres**

FOR ALL YOUR TYRE NEEDS



**Flaxley Alignment Centre**

WE OFFER A FREE CHECK ON  
THE HUNTER ALIGNMENT SYSTEM



flaxleytyres

**[www.flaxleytyres.co.uk](http://www.flaxleytyres.co.uk)**

Unit 1, Imex Business Park, Flaxley Road, Stechford B33 9AL

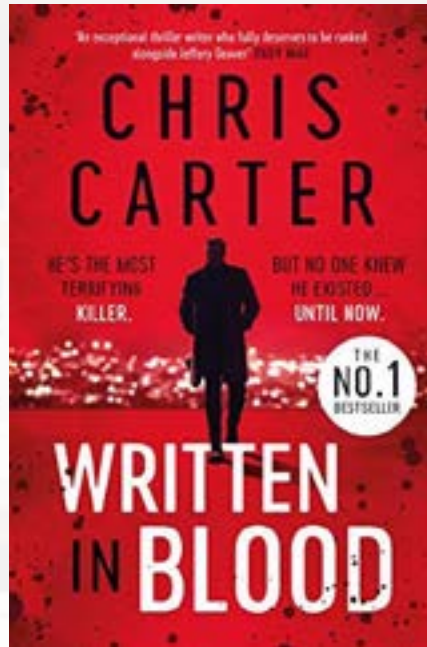
# Castle Bromwich Library Book Club

## Written in blood by Chris Carter

Los Angeles, December 4th - exactly three weeks until Christmas day. Angela Wood, a master in the art of pickpocket, has just finished for the day - \$687 - not bad for less than fifteen minutes work. As she celebrates her profitable day with a cocktail, one of the patrons in the lounge she's in catches her attention by being rude to an old man. Angela decides to teach him a lesson and steals the man's expensive-looking leather bag. Inside is no money - no laptop computer - nothing of any value - at least not to Angela. Just a black, leather-bound book, surprisingly heavy. Curiosity takes over and in the comfort of her apartment, Angela quickly leafs through the pages. That is when the worst nightmare of her life begins. This is no ordinary book. Read it at your own peril.

*A toe curling, gripping, thrilling and terrifying book. The writing is excellent with tension and suspense which never seems to end. Highly recommended.*

Review by Castle Bromwich Library member

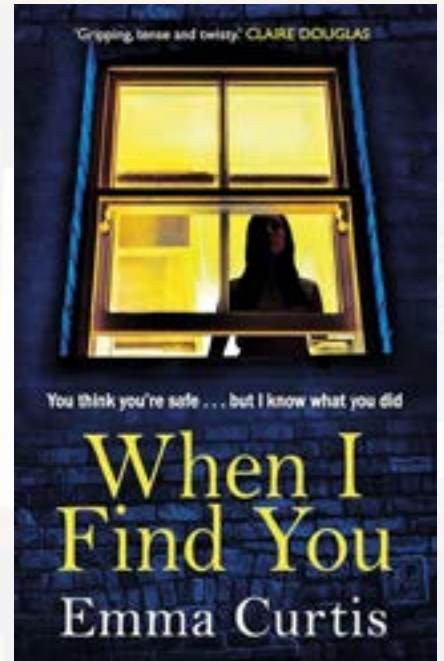


## When I find you by Emma Curtis

What do you do when someone takes advantage of your greatest weakness? When Laura wakes up after her office Christmas party and sees a man's shirt on the floor, she is horrified. But this is no ordinary one-night-stand regret. Laura suffers from severe face-blindness, a condition that means she is completely unable to identify and remember faces. So the man she spent all night dancing with and kissing - the man she thought she'd brought home - was 'Pink Shirt'. But the shirt on her floor is blue. And now Laura must go to work every day and face the man who took advantage of her condition. The man she has no way of recognising. She doesn't know who he is - but she'll make him pay.

*This is a fascinating psychological thriller. Its twists and turns kept me glued to the pages right to the chilling end.*

Review by Castle Bromwich Library member

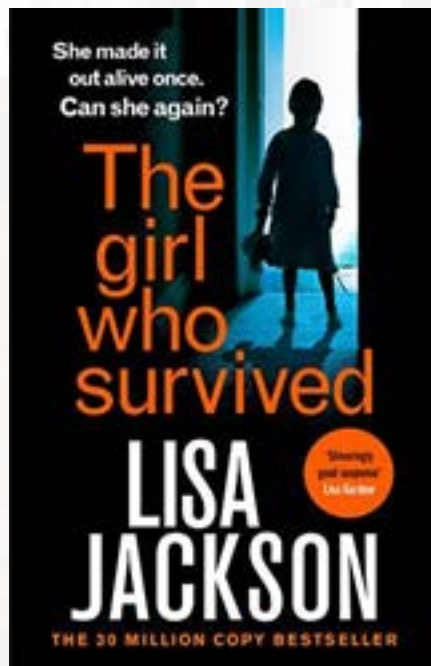


## The girl who survived by Lisa Jackson

All her life, she's been the girl who survived. Orphaned at age seven after a horrific killing spree at her family's Oregon cabin, Kara McIntyre is still searching for some kind of normal. But now, twenty years later, the past has come thundering back. Her brother, Jonas, who was convicted of the murders has unexpectedly been released from prison. The press is in a frenzy again. And suddenly, Kara is receiving cryptic messages from her big sister, Marlie - who hasn't been seen or heard from since that deadly Christmas Eve when she hid little Kara in a closet with a haunting, life-saving command: Don't make a sound. As people close to her start to die horrible deaths, Kara, who is slowly and surely unravelling, believes she is the killer's ultimate target.

*A gripping thriller with a great storyline which had me guessing until the end. Lots of twists and turns with well thought out characters. I will be reading more books by Lisa Jackson.*

Review by Castle Bromwich Library member



## The fire child by S.K Tremayne

When Rachel marries dark, handsome David, everything seems to fall into place. Swept from single life in London to the beautiful Carnhallow House in Cornwall, she gains wealth, love, and a stepson, Jamie. But then Jamie makes a chilling prediction, and Rachel's perfect life begins to unravel. Haunted by the spectre of David's late wife - Jamie's real mother - Rachel finds herself drawn to the deserted mines where she plunged to her death, three years prior. As Rachel starts digging into the past, she begins to grow suspicious of her husband. Why is he so reluctant to discuss Jamie's behaviour? And what exactly happened to cause his ex-wife's untimely suicide? With December looming, Rachel begins to fear there might be truth in Jamie's words: 'You will die at Christmas'.

*This is an intense, atmospheric psychological thriller with a shocker of an ending. A fantastic read - if you like haunting tales, this is for you.*

Review by Castle Bromwich Library member





**Cllr Martin McCarthy, Castle Bromwich Ward (Solihull MBC)**

# Are you fit for the approaching Christmas season?

As we approach the winter solstice with its increasingly short daylight hours, now is the time to Give some thought to keeping up our fitness and avoid being physically Run down by the time spring approaches, just a few moments extra exercise and mobility a day could make all the difference.

**New Water Orton Road Pedestrian crossing completed.**

The new Water Orton road pedestrian crossing and associated speed cushions at Arden Hall are now in place, this will make crossing the road there safer and help to moderate the speeds of vehicles approaching the mini island at the top of the Green,

Credit for this goes to those people who have come to us to say "we want this" as many of the best local improvements all start this way.

**Fly Tipping.**

Fly tipping continues to be an unsightly and sometimes unhealthy problem in our area.

If you can do so discreetly, please do take a picture of

anyone abandoning waste in this way and share these so that enforcement action may be taken.

**Birmingham Airport Charity awards.**

The Birmingham Airport's Community Trust Fund makes grants of up to £5,000 available to community organisations in those areas most impacted by aircraft operations.

Myself and the other Trustees are keen to ensure as many groups as possible are aware of the availability of funding. Recent awards in Castle Bromwich include an award of £4500 given to the Hall Gardens, this is for a sustainable Horticulture project, which will provide a greenhouse to house a new propagation area.

Please do contact us if you are considering a local community project, raising funds for it may be easier than you think.

**Police road safety.**

Good to see our national media picking up on police use of dash cam footage as mentioned in last month's update, this footage is received from members of the

public and used for dealing with some of the awful driving behaviour that we see all too often.

**Wow was that a person?**

How often during winter evenings has a shadow flitted in front of your car ? wow was that a pedestrian that just passed in front of us ?we all need to think about wearing something bright or reflective if we are to be safely seen when using the road on these dark evenings.

**Regular Councillor Surgery at Castle Bromwich Library.**

My next monthly surgery is scheduled for Monday the 4th December, this takes place at the Library at 14:00, the January Surgery is scheduled for the 8th January at 14 no appointment is required, please email, or call me if anything urgent comes up in the meantime.

Our councillor emails are  
 martin.mccarthy@solihull.gov.uk  
 alan.feeney@solihull.gov.uk  
 and leslie.kaye@solihull.gov.uk

Best wishes to all for the festive season.

## CASTLE BROMWICH & District Lions Club



Having just completed two weeks of Poppy selling at Tescos Hodge Hill, (ably assisted I might add by many friends of Lions Castle Bromwich) we were proud to lay our own wreath at the Remembrance Service. The service which was held on the Green Castle Bromwich was well supported by numerous representatives from the Armed services, cadets, local Brownies and Scouts as well as the Parish Council who organised the event. The nearby public house, now known as Hickories, kindly provided parking and coffee for those that wanted it. Our own Lion, Carol Herbert did the honour of laying our wreath as our tribute to the fallen.

On the Friday following the Remembrance day we held the second of our quiz's this year. Once again it was held at the Family Tree Club in Kingshurst and was conducted by those superb Quiz masters Ken and Rhoda. I'm happy to report that

once again the Quiz was an enormous success. It is proving to be a very popular night out. So popular in fact that regrettably we had to turn people away. At £10 a time which included a fish and chip supper it was superb value for an excellent night out. The clubs congratulations to Steve, our fundraising Chairman who does most of the hard work in organising the event. We look forward to the next one in March and to everyone get in early if you wish to attend.

It is the profit from events such as the Quiz, car boots (mostly run by Carol again) that enables us to help Around Again, the social supermarket and other appeals with regular contributions.

Having said that I would remind everyone that our main fundraising occasion is almost upon us. I refer of course to the Santa Christmas collection. This year Santa will be on duty at the following locations;

**Morrison's at Coventry road Sheldon** on Saturday 2nd December 10am to 4pm and Sunday 3rd December 11-4pm

**Asda at Minworth**, Saturday 9th December 10-4pm and Sunday 10th December 11-4pm

**B&M at Minworth**, Saturday 16th December 10-4pm, Sunday 17th December 10-4pm and Saturday 23rd December 11-3pm.

Should any of you fancy joining us at any of the above locations and can help by shaking a can you are more than welcome Contact Steve on 07754 950290 or Phil 07969 621256 .

This will almost certainly be the last report this year so on behalf of all at Castle Bromwich and District Lions Club I wish you all a very merry Christmas and a Happy new year.

The Only Family Owned Funeral Directors in Castle Bromwich

# Hickton Family Funeral Directors

Trevor E.W. Hickton Ltd



**About Us**

Established in the Black Country in 1909, the Hickton family have been serving the community through four generations.

The business currently in its 3<sup>rd</sup> and 4<sup>th</sup> generation of ownership, identified the need for a new modern independent funeral director to serve the Birmingham and Solihull areas.

Many of the long established funeral homes in the local area have been sold to much larger corporations over the past 15 years and have no family members left involved in the business. W.H. Painter, for example, are owned by Funeral Partners, a large nationwide corporate company.

We are the only family owned funeral director in the area now.

With our family ownership we feel in a position to give a much more caring service when called upon, compared to large corporate companies. We also feel we can be much more cost effective in comparison to the corporate funeral homes.

**The Basic Funeral Package £1400.00\***

Including - Professional services, transfer from place of death, care of loved one, hearse, simple coffin, funeral director, bearers.

**The Traditional Clent Funeral Package £2350.00\***

Including - Professional services, transfer of your loved one from place of death, preparation and viewing of loved one in a traditional coffin, care of loved one, hearse, one limousine, funeral director & bearers. 4ft floral coffin spray, 40 order of service booklets, ashes scatter tube, donations box and 6 bereavement support sessions.

\*cost excludes cremation, burial, doctors or minister's fees. All costs are correct up until April 2021

- 24 Hour Service in all areas
- Home Visits & Arrangements
- Payment Plans
- DWP Social Help
- Simple Low Cost Funeral Options
- Private Chapels of Rest
- Modern & Classic Vehicles
- Professionally Trained Staff
- Horse Drawn & Alternative Hearses
- Pre-Paid Funeral Plans



320 Bradford Road, Castle Bromwich B36 9AD

Opposite Toby Carvery (The Bradford Arms) 24 Hour: 0121 747 7900

www.TEWHickton.co.uk



# Castle Bromwich Parish Council News



As 2023 comes to an end, the hall has had yet another busy month with two visits from Father Christmas. As we soon ring in 2024, we are set for even more events at the hall. Please keep an eye out on our village green notice board, webpage or our social media facebook page, where our events, notices will give information of our coming events.

Before we start with our news, the Parish Council and Arden Hall Staff would like to wish you all a safe and merry christmas. We will look forward to seeing you at our events in the new year.

## Christmas Children's Carol Service

Our annual Christmas tree lighting and Carol Concert on November 21st welcomed children from Castle Bromwich Junior School and St Mary and St Margaret's School, who sang carols to a full house of parents, grandparents, family and friends. The evening started with traditional carols sung by the Castle Bromwich Singers, who support the event each year, for which we are very grateful.

Father Christmas entered, ringing his bell and announcing the countdown to the Christmas tree lights being turned on and then heading off to his newly built grotto to greet children with their Christmas wish lists. Castle Bromwich Lions provided refreshments on the evening and made sure Father Christmas had a warm cup of tea after his journey from the North Pole.

All ticket proceeds from this event were divided between both schools and the Chairman's Charity Fund. A huge thank you to the teachers and school choir for a wonderful evening of song.

Each School received a cheque for £156.33, presented by Chairman Pauline Allen



(Left) Ms Wallin, St Mary & St Margaret's School  
(Right) Mrs Tristi Timms, Castle Bromwich Junior School

## Youth Council

Our Youth Council at the Halloween craft fair, got into character with their costumes. They made cakes and organised games for the children. They are in the process of organising their stall in the annual "Party in the Park" which will take place on Saturday 8th June 2024.

Castle Bromwich (CBYC) is a group of local young people aged between 11 and 19 who represent young people's views and work towards improving things for young people in the borough.

Members of the group work with the Community & Leisure Officer, Parish Council and outside youth officers. They meet on a Tuesday evening between 5pm -6pm every two months.

All members get involved in:

- Finding out and representing the views of young people.
- Working with and influencing decision makers.
- Running youth lead projects and campaigns.
- Helping with events at Arden Hall.

The Youth Council consists of a core committee, which includes a Chair, Vice Chair, Community & Leisure Officer, Chairman of the Parish Council and other outside youth workers/teachers.

Being a Youth Councillor is an important role and requires commitment and dedication but along the way you will:

- Have the opportunity to have your voice heard and help make a positive change.
- Acquire new skills through experiences and training.
- Meet lots of different people and make new friends.
- Add to your CV for school/college/university/employment.

If you're interested in becoming a member of Castle Bromwich Youth Council, we need your interest via email at [leisure@castlebromwichpc.gov.uk](mailto:leisure@castlebromwichpc.gov.uk)

The Youth Council meetings are on 9th Jan 2024, 5th March, 7th May.

We will then contact you and send you consent forms to be completed by your parent or carer.

For more information, contact the Parish Council on:  
Telephone: 0121 747 6503

Email: [leisure@castlebromwichpc.gov.uk](mailto:leisure@castlebromwichpc.gov.uk)



## Annual Remembrance Service

On a damp and wet November morning, following a church service at St. Mary and St. Margaret's Church, the Revd. Fiona Harrison-Smith, led the Remembrance Service at the War Memorial in Castle Bromwich village.



A 200-strong parade led by Warrant Officer Mark Berry 165 (Castle Bromwich) Sqn

Royal Air Force Air Cadets and members of the Lions brought the parade to the memorial, which consisted of military cadets and community organisations.

The Parish Chairman, Pauline Allen, Parish Councillors, Parish Youth Council and Solihull Borough Councillors marched alongside the West Midlands Fire Service West Midlands Police, St John Ambulance, Veterans, Scouting and Guiding Organisations along with the local schoolchildren.



All gathered in silence around the war memorial, which was beautifully decorated with woollen poppies styled by Sarah Williams at Manor Park Brides.

The woollen poppies were hand made by knitters and crafters from The Crafty Cow, St. Clements Church, and our chairman, Pauline Allen.

The four coloured poppies had written details of their history. Local children painted pebbles, which were placed around the memorial.

When the bugler fell silent Cllr. John Macdonald cited, "When you go home, tell them of us and say, for your tomorrow, we gave our today."

Please HELP! we are still looking for a drummer to lead our parade. If you know of anyone, contact [leisure@castlebromwichpc.gov.uk](mailto:leisure@castlebromwichpc.gov.uk)

## CHRISTMAS CRAFT FAYRE

On Saturday December 2nd, the first Ultimate Girls Christmas Craft Fayre took place with stallholders selling their Christmas Craft wares.

Twenty-seven stall holders attended, offering christmas gifts for loved ones, friends and pets. An extra special visitor, Father Christmas came to enjoy another comfy fire-side grotto and to met children with their long wish lists of present requests. Many had an afternoon tea, tapping their toes to the live music, before and after visiting the christmas stalls.







# Castle Bromwich Parish Council News



## Live Music Event

We were thrilled to invite the community for a spectacular evening of music and celebration as we paid tribute to the unforgettable George Michael! His iconic hits boomed around the hall and we were transported back to the golden era of George Michael's music.

The feedback on the night was 100% positive and a request for a return next year. All our music events are on our notice boards at the hall and parks. Keep an eye out!



## New Years Eve – Phil Collins

Get ready to ring in the New Year with an unforgettable evening of music and celebration, to our exclusive Phil Collins Tribute Night at Arden Hall in Castle Bromwich on December 31st. Join us for a night of incredible performances and dancing, as we pay homage to the legendary Phil Collins and his timeless hits.

Here are the details for the event:

Date: December 31st

Venue: Arden Hall, Castle Bromwich

Doors Open: 7:00 PM

Tickets: £15

The night will kick off with a fantastic Before Party, where you can mingle with fellow fans and enjoy pre-show entertainment starting at 7:00 PM. and get yourself in the party spirit as we prepare for an unforgettable night of music.

At 9:00 PM, the main event will begin, featuring an exceptional Phil Collins tribute act that will take you on a journey through his greatest hits. Be prepared to sing along and dance the night away to timeless classics like "In the Air Tonight," "Another Day in Paradise," and many more. The tribute act promises to capture the essence and energy of Phil Collins, delivering a truly memorable performance.

As the clock strikes midnight, we will transition into the After Party, where the festivities will continue well into the early hours of the New Year. Raise a glass, toast to new beginnings, and enjoy the company of friends and fellow fans while dancing to an eclectic mix of music genres that will keep you grooving until 1:00 AM.

Wishing you a joyous and prosperous New Year in advance!

Tickets -

Anthony, Tribute Night Promotions 0121 270 5886 or pay on line at <https://tributenightpromotions.co.uk>

## Arden Hall Parks

During the festive season the parks are closed on the following days.

24th December – closing at mid-day 12:00pm

25th December – closed

26th December- closed

1st January -closed

## 2024 TABLE TOP DATES for your Diary

The tables are £10 each (6ft x 4ft), which must be paid to secure your place before the event. Please call the Arden Hall office at 0121 747-7150. Due to our staff working in and around the hall, the phone cannot always be answered promptly. Please leave a telephone message and staff will get back to you as soon as they can, or alternatively email Arden Hall at [ardenhall@castlebromwichpc.gov.uk](mailto:ardenhall@castlebromwichpc.gov.uk).

Table Top events are held on Saturdays with free admission to the public and are open between 10:00 a.m. and 12:30 p.m.

January 6th      June 1st

February 3rd    July 20th

March 2nd        September 7th

April 6th

October 5th

May 4th

November 2nd

There are NO table top sales in August and December.

## Make a change become a councillor

- Are you passionate about your community?
- Do you want to help make a long-lasting change?
- Do you have innovative ideas for the council?
- Do you have concerns about a specific issue and want to do something about it?

If this is you, then we need you at Castle Bromwich Parish Council. We need people from all backgrounds and experiences who reflect their community to put themselves forward for election. Make a change and become a councillor.

## What do local councils and councillors do?

Parish councils and councillors make a massive difference to local people's quality of life. They are the first tier of governance and are the first point of contact for anyone concerned with a community issue. They are also passionate about their communities and seek to make a change to help improve their residents' lives.

Local councils run numerous services, depending on the size of the council. Many of them you will see day-to-day, but some are less known. These include setting up community groups, organising facilities for sports, recreation, and social events, making decisions on local planning applications, looking at traffic schemes to address congestion, parking, speeding, etc., establishing youth projects, and managing open spaces.

Councillors are elected to represent the local community, so you must either live or work in the council area.

Becoming a councillor is a rewarding experience as you will be able to make a change in your community to help improve residents' lives. A councillor's role can include developing strategies and plans for the area, helping with problems and ideas, representing the community, working with other local community groups, decision making and reviewing decisions and talking to the community about their needs and what the council is doing.

## How to become a councillor

A Parish Council can only be as helpful, connected and energetic as the people elected to run them, so we need councillors capable, enthusiastic and engaged to reflect their communities. You can find out more about becoming a councillor on The Electoral Commission and Local Government Association website. There are three ways that you can become a councillor; standing for election, filling a vacant seat after an election (co-opted) or filling a casual vacancy.

We have vacancies right now.

For more information, contact Castle Bromwich Parish Council 0121 747 6503 or [counciloffice@castlebromwichpc.gov.uk](mailto:counciloffice@castlebromwichpc.gov.uk) or go onto YouTube to see the #makeachange video

Balfour Beatty VINCI Working in partnership with **HS2**

## Closure of B4114 Birmingham Road, Coleshill

### The work we will be completing

We are continuing to prepare for works to construct the Coleshill Viaducts that will carry the HS2 railway over the existing B4114 Birmingham Road. To reduce disruption as much as possible, BBV will open a temporary diversion for the existing B4114 Birmingham Road until December 2024. This will allow traffic to continue to use the B4114 as we complete preparatory works on areas of the existing road. Works to construct the temporary diversion have been ongoing throughout 2023. To complete these works, we will now tie in the temporary diversion to the existing B4114 Birmingham Road.



### Traffic management

Four-week closure of B4114 Birmingham Road from Monday 8 January 2024 to Sunday 4 February 2024.

A diversion route will be in place throughout the closure. The closure is shown in orange and the diversion is shown in blue on the map.

### Community Projects

BBV and our supply chain partners can give back through volunteering time, providing resources and capacity building through the transfer of knowledge and skills.

Please contact us at [communityinvestment@balfourbeattyvinci.com](mailto:communityinvestment@balfourbeattyvinci.com) if you have any projects that you feel we could support you with.

## Coleshill Warm Room Celebrates 1st Anniversary

Coleshill Warm Room celebrated its one-year anniversary on 1st November 2023. The room was opened by the Town Council to provide locals with a warm space last winter when fuel prices rocketed. It is located in the Coleshill Town Hall every Tuesday to Thursday mornings. Due to the popularity it has stayed open since the winter, having seen the attendances stay consistent throughout the summer months. It

has become somewhere to enjoy the company of others who have previously suffered from isolation and loneliness since the pandemic. Tea, cake and conversation has been the recipe for success. There's always a warm welcome at Coleshill Warm Room.

On the back of the success of the Warm Room at the Town Hall a similar Warm Room was opened at the Coleshill Community Centre Temple Way every Tuesday morning for those residents at the north end of the town.



**WARM ROOM**  
At Coleshill Community Centre



Warwickshire Rural Community Council

Every Tuesday  
10:00 am to 1:00 pm  
Come and join us for  
conversation,  
refreshments and  
support



For more information  
contact Dawn on  
07753 315384



Supported by  
Coleshill Town Council  
and Coleshill Hub



# TWIN RIVERS WOMEN'S INSTITUTE



## Coleshill Remembrance Day Twin Rivers WI Involvement

Twin Rivers WI (TRWI) are very proud to have played a number of roles on Remembrance Day this year. What people may not have realised was that was a tale of three parts:

### Postbox Topper

For nearly a year now, the TRWI have been decorating the postbox situated at the bottom of the High Street by the garage. Since early November, the top has been covered in a tight array of poppies in not only traditional red, but also in white (for peace) and purple (to remember the animals who have died in service). Everyone who has mentioned it has said how wonderful it is and we are very proud.

### Poppy Cascade

It caused quite a stir when the cascade was dropped down the side of the church and provided a real backdrop to the service on the Sunday morning. There were over 1000 poppies attached to netting and

the ladies of the TRWI, their friends and anonymous crafters worked tirelessly to get the blooms knitted and crochet in time to be tied on. It took three evenings to get them all in place, and they continued to be attached right up until the last moment as bags of flowers kept on being found on doorsteps left by anonymous donors. Sadly, storm Debi put pay to the cascade by blowing it up and over the Church roof. so it had to be taken down on the following Monday for fear of it damaging the clock, but it had performed its duty for this year and is ready to be used again in 2024. The TRWI Craft Group, WI committee and the Church are now considering how better to utilise the poppies next year.

### Laying of Poppy Wreath

TRWI's president, Ali Doyle, was honoured to be invited to be part of the parade that walked along the High Street to the church for the service, along with other TRWI members.

This year the service was unusually held in the church due to the wet weather before progressing outside to the War Memorial for the laying of the wreaths. It was a sombre and moving moment when Ali laid the TRWI laurel.

The TRWI wreath had one single crochet poppy attached along with the traditional silk flowers which we felt was entirely apt. It bore the following verse:

*"They shall grow not old, as we that are left grow old; Age shall not weary them, nor the years condemn. At the going down of the sun and in the morning. We will remember them."*

We are planning already for next year. We still would love people to continue to crochet and knit poppies ready for November 2024. For what is being planned, it will take a lot more poppies than we have already to create as dazzling a display as possible in the memory of all those who have sacrificed so much for us.



## Twin River WI Wins Again!

**It is another win for Twin Rivers WI (TRWI) at the Tamworth & District WI Show. Nothing seems to be able to stop them when it comes to food and drink!**

It was a lovely competition with Women Institute teams entering from all over Warwickshire and its surrounding areas. The main competition was made up of two categories:

- a tropical themed cookery table; and
- a general craft table.

TRWI is proud to have won the best tropical cookery table, not only for the food, but for its display! So two trophies were bought home, a great haul for the afternoon!

This year, Twin Rivers was able to improve its general display by one of its members (Dawn) rolling up her sleeves to create a new adjustable backdrop and tablecloth; a staging area that is bound to improve our chances in future competitions – she even included spotlights and display plinths!

There is always an amusing 'near-miss' story though: This time, the ladies were unaware that they needed to include a flower display on the general craft table. So two of the members, Lorraine and Alison, performed a mercy dash to the closest supermarket to buy a bunch of roses. They then hoofed-it back to the venue, found a large jug in the kitchen... and shoved them in there. The flowers were on the table with seconds to spare before judging commenced. Bizarrely (and perhaps rather unfairly given the circumstances) they achieved a great

mark for the flowers, and other WIs who had meticulously created their floral displays did not get any better a score! Not only was there a win with the tropical table, in the individual event Alison won the prize in the photographic category for her beautiful sunset snap, and Denise won in the best cake competition. So it was an all-round celebration. Congratulations to all the winners and those who took time out of their busy lives to create wonderful entries, give practical help and provide moral support.





tel. **0121 749 6313**  
[www.walshpodiatry.co.uk](http://www.walshpodiatry.co.uk)

reception@walshpodiatry.co.uk  
329 Chester Road, Castle Bromwich, Birmingham, B36 0JG

## Step into the Holidays: Prepare Your Feet for Christmas and the Colder Weather



As the festive season approaches and winter's chill sets in, it's essential to remember that our feet deserve a little extra attention and care. The cold weather, combined with the hustle and bustle of holiday preparations, can take a toll on our feet. Ignoring their well-being can lead to discomfort, pain, and even more serious issues. So, before you wear your favourite holiday shoes and step out to celebrate, take a moment to prepare your feet for the winter wonderland ahead.

### Facts You Need to Know:

**Moisturize to Hydrate:** Cold weather can cause the skin on your feet to become dry and cracked. Dry skin not only looks unappealing but can also be painful. Regularly moisturising your feet with a high urea percentage cream can prevent this issue and keep your skin soft, our Help4feet cream has a 10% urea.

**Warmth Matters:** Cold feet are not just uncomfortable; they can also affect your overall body temperature. Wearing warm, insulated socks made of materials like bamboo can provide the necessary warmth and protection during chilly weather.

**Proper Footwear is Key:** Wearing appropriate footwear is crucial during the colder months. Invest in shoes or boots that are waterproof, insulated, and provide good traction to avoid slips and falls on icy surfaces. Proper arch support is essential to prevent foot fatigue, especially when attending long holiday parties or shopping sprees.

**Trim and Care:** Don't neglect your toenails, a common problem exacerbated by tight shoes and boots can be the cause ingrowing toenails.

**Seek Professional Help:** If you experience persistent foot pain, swelling, or other discomfort, don't hesitate to consult us on 0121 749 6313, we can diagnose any underlying issues and provide expert advice tailored to your needs.

This holiday season let's make sure we put our best foot forward. By following these simple steps and paying attention to our feet, we can enjoy the festivities without any hindrance. After all, happy feet make for a joyful journey, whether you're strolling through a winter market, dancing at a holiday party, or simply relaxing at home with loved ones.

So, let's toast to healthy and happy feet this Christmas – because every step you take should be filled with comfort and cheer.

# Grand Opening of the Adrian Southall Room

## Main information

On Wednesday 8th November tenants, family, friends and staff gathered at St Vincent's House in Coleshill to celebrate the opening of their new Adrian Southall communal room. The room is named after a former tenant, Adrian Southall, who sadly died in 2018. An article commemorating Adrian said, "Adrian's passions were eating, going to the internet café, watching Manga, and his family. Adrian saw the staff and tenants of St Vincent's as family too. It is difficult to realise that Adrian won't be around anymore. We will miss his jokes, his pranks and most of all his beaming smile. But his legacy will live on at St Vincent's"

We were joined by Jacqui and Jeff, Adrian's parents, and Coleshill Deputy Mayor Sue Wallace, with Jacqui and Jeff officially opening the room. Food and refreshments were provided in the new communal room which is bright and airy, with a sink and kettle for those essential cups of tea. Tenants are already making the most of the room, with Peter and Neil already setting up board games in the room. One of the domiciliary care staff, Janine, said at the opening event, "it's nice because we used to have Christmas dinner in one of the tenant's rooms because we didn't have the space, but now we have this wonderful space to use."

St Vincent's offers supported living, with self contained flats for each tenant. However, we soon realised that a communal space where everyone could gather was needed. Our new Adrian Southall communal room is accessible to all, being on the ground floor and wheelchair friendly. We would like to thank everyone who contributed their time, efforts and donations to making this room a reality. Andrew Penny, manager of domiciliary care, said after the opening event, "It's amazing to remember that this was only a pipe dream for us all to have this room. And now to see this wonderful space in operation, words can't explain how proud and happy I am for everyone who is associated to St Vincent's House."

*St Vincent's was built in 2015 and has 7 one bed flats and 3 two bed flats designed or adapted for independent living. Our domiciliary care team provides support for the tenants to live independently. Our support staff are well trained, caring and are dedicated to providing tenants with friendly, professional support. Our flexible approach will respond to changes in tenant's personal circumstances and either increase support or decrease it as needed.*



Adrian Southall's family planted this beautiful tree when they visited us to officially open the Adrian Southall communal room

# PUBLIC NOTICE

## GOODS VEHICLE OPERATOR'S LICENCE

**Jones Services Removals & Storage Ltd**  
**Of 10 Lindridge Drive, Minworth,**  
**Sutton Coldfield, B76 9RQ**

**is applying to change an existing licence as follows. To add an operating centre to keep 1 goods vehicles and 0 trailers at Space Station Castle Bromwich, Trade Park, Chester Road, Birmingham, B35 7AF**

Owners or occupiers of land (including buildings) near the operating Centre (s) who believe that their use or enjoyment of that land would be affected, should make written representations to the Traffic Commissioner at Hillcrest House, 386 Harehills Lane, Leeds, LS9 6NF, Stating their reasons, within 21 days of this notice.

Representors must at the same time send a copy of their Representations to the applicant at the address given at the top of the notice. A Guide of Making Representations is available from the Traffic Commissioner's Office.

## ALL PLUMBING & HEATING JOBS

Finance  
**NOW**  
 available  
 through  
 Kanda from  
**0% APR**



- Boilers install & Service
- Bathroom Fitting
- All plumbing heating & Gas jobs

**Boilers Service £60**

Contact us for a **FREE** quote



Call Joe on: 07792 470 504  
[www.jpdc-plumbing.co.uk](http://www.jpdc-plumbing.co.uk)



## COLESHILL & DISTRICT GARDENING CLUB

### Dates for your diary

Monday 11th December  
 Gardening Club Christmas Party

At Coleshill Town Hall

Featuring Carols with Coleshill Town Youth Band  
 And a "BRING AND SHARE" supper!  
 Please arrive between 7.30-7.45pm.

Mulled Wine and Mince Pies will be served before the entertainment and tea and coffee will be available.

Members £3.50 Non Members £5

Monday 15th January

Gardening Club Picture Quiz At Coleshill Community Centre, Temple Way, corner of Station Road. 7.45pm

Members £3.50, Non Members £5.

Refreshments included.

Hope to see you at both events, everyone welcome.  
 From all at Coleshill and District Gardening Club have a  
 Happy and Healthy Christmas.

For more information contact Meda on 07549037477



HBFS EQUITY RELEASE LIMITED



### 'Helping Retirees Enjoy Their Retirement'

HBFS Equity Release Ltd only advise you on lifetime mortgages where you retain 100% ownership and the deeds to your property. All the products meet the standards and principles set out by the Equity Release Council so you have the peace of mind of knowing that you and your family are protected by these customer focused safeguards as well as being regulated under the Financial Conduct Authority.

**CALL 01564 711015**

WE OFFER AN INDEPENDENT NATIONWIDE SERVICE

[www.hbfsonline.co.uk](http://www.hbfsonline.co.uk)

Email: [k.tedstone@hbfsonline.co.uk](mailto:k.tedstone@hbfsonline.co.uk) – [k.teague@hbfsonline.co.uk](mailto:k.teague@hbfsonline.co.uk)

HBFS Equity Release Limited Authorised and Regulated by the Financial Conduct Authority - Registration Number 304106

## Inspirational young fundraiser to be celebrated at Mary's Meals' Christmas event in Birmingham city centre

Michael Glover, 11, will be a guest of honour at A Very Gospel Christmas at St Martin in the Bull Ring, which will feature a live performance from the renowned Lichfield Gospel Choir.

An inspirational young fundraiser is to be celebrated as the guest of honour at school-feeding charity Mary's Meals' upcoming Christmas event in Birmingham city centre.

Schoolboy Michael Glover, 11, will be one of the special guests at the festive gathering after raising more than £500 for the charity in recent weeks.

A Very Gospel Christmas, which will see the fantastic Lichfield Gospel Choir put on a captivating live performance, takes place at St Martin in the Bull Ring on the evening of Saturday 9 December.

Mary's Meals feeds more than 2.4 million children every school day in 18 countries including Ethiopia, Haiti and Zimbabwe. The promise of a nutritious meal encourages children into the classroom where they can gain an education and hope for a brighter future.

After hearing about the charity earlier this year, Michael has been on a fundraising mission. Not only has he put on bake and craft sales, the enterprising youngster has also created and sold graffiti style artwork. He has even written poems about the work of Mary's Meals, one of which will be performed at the Christmas event. Michael says: "I have really enjoyed raising money for charity and helping others."

Hannah Moore, Supporter Engagement Officer at Mary's Meals, says: "We're so thankful to Michael for his incredible fundraising and we can't wait to say thank you in person at A Very Gospel Christmas. Seeing children like Michael get behind our mission is so inspiring as they strive to help the children we serve every school day."

Mary's Meals' Founder and Sunday Times bestselling author Magnus MacFarlane-Barrow will also give a talk about the work of the charity at St Martin in the Bull Ring, sharing inspiring stories from the children receiving Mary's Meals and the supporters who make this possible.

The one-off event will include a selection of seasonal stalls and plenty of mince pies and mulled wine to get people in the festive spirit in the countdown to Christmas.

Proceeds from the evening will allow Mary's Meals to serve nutritious school meals to hungry children living in some of the world's poorest countries.

Looking forward to the event, Hannah Stewart, Supporter Engagement Manager at Mary's Meals says: "We're incredibly excited to be hosting A Very Gospel Christmas in Birmingham and we're really looking forward to welcoming everyone to St Martin in the Bull Ring this December.

"The wonderful Lichfield Gospel Choir will certainly get us all in the festive spirit with a fantastic night of gospel music, while your attendance will also help us to continue our work feeding hungry children across the world, this Christmas."

For more information on A Very Gospel Christmas and to secure tickets, which are priced at £10, visit Eventbrite.

It costs just £19.15 to feed a child with Mary's Meals for an entire school year. To find out more about the charity's work, please visit [www.marysmeals.org.uk](http://www.marysmeals.org.uk).



Michael Glover, has raised more than £500 for Mary's Meals in recent weeks



## ADVERTISE YOUR BUSINESS HERE

For more information on how to advertise  
in any of our titles please call:

0121 749 7502 / 07805 430191 or  
email: [editor.postgroup@outlook.com](mailto:editor.postgroup@outlook.com)

## Join our team

at St Catherine's Bungalows

Support Worker vacancies

£10.70 per hour

Full induction and training provided

No experience in care needed

Visit [www.fatherhudsons.org.uk/vacancies.htm](http://www.fatherhudsons.org.uk/vacancies.htm)

Call 01675 434000 or email

[recruitment@fatherhudsons.org.uk](mailto:recruitment@fatherhudsons.org.uk)

**Hudson's  
Care**

# PCC's office is now White Ribbon Accredited, reflecting commitment to tackling violence against women and girls



**The Office of the Police and Crime Commissioner for Warwickshire has been granted White Ribbon Accreditation to mark its ongoing commitment to ending men's violence against women across the county.**

The Commissioner's office is a key contributor to the Warwickshire Violence Against Women and Girls (VAWG) Strategy, as well as co-commissioning the county's domestic violence support service from Refuge, as well as a wide range of other support services from specialists such as Safeline, Barnardo's and Victim Support.

Work to tackle violence against women and girls also features as a key area of focus in the Commissioner's Police and Crime Plan for Warwickshire.

By achieving White Ribbon Accreditation in its own right, the Commissioner's office is re-affirming these multi-year plans to help eliminate attitudes and behaviours that lead to violence against women. White Ribbon Accreditation is an opportunity to underline that workplaces must be a safe place for men and women and to upskill staff to become changemakers.

As part of the accreditation, Police and Crime Commissioner Philip Seccombe has become the office's White Ribbon Ambassador, reaffirming the promise he has made on previous White Ribbon Days to never use, excuse or remain silent about men's violence against women and girls.

On White Ribbon Day itself (Saturday 25 November), Mr Seccombe will be joining the Warwickshire Federation of Women's Institutes vigil against violence at Warwick Market Square, helping to encourage more men to take the promise, as well as helping promote the support available to help those affected by violence.

Commenting on the White Ribbon Accreditation, Mr Seccombe said: "I'm delighted that my office has achieved the White Ribbon Accreditation as a Supporter Organisation. It underlines the seriousness with which we take the mission to end violence against women and girls, which has been a key part of my Police and Crime Plans for Warwickshire since I took office.

"It's vitally important that men in particular help to change the story for women and girls and never commit, excuse or stay silent about violence. As a White Ribbon Ambassador myself, I am keen to get this message out widely across communities in Warwickshire, as well as continuing to ensure that there is high quality support available to help victims and survivors of violence."

Anthea Sully, Chief Executive of White Ribbon UK said, "White Ribbon Accredited Organisations can make a real difference towards ending violence against women by promoting a culture of respect and equality among their staff and wider communities. By raising awareness among employees, people can learn how to become allies and call out violent and abusive behaviour when they see it. We are delighted to welcome the Office of the Police and Crime Commissioner for Warwickshire as one of our White Ribbon Accredited Organisations and are looking forward to working with them towards ending violence against women once and for all".

White Ribbon Day also marks the start of the global 16 Days of Action Against Domestic Violence. The Commissioner's office is supporting the campaign with county partners, with the message for victims and survivors of domestic abuse that 'you are not alone'.

**For help and information about how to report domestic abuse and how to get help in Warwickshire, visit [www.talk2someone.org.uk](http://www.talk2someone.org.uk) or call the helpline on 0800 408 1552.**



**Pied Piper**  
Pest & Wildlife Management

All Pest Species Catered For  
(except Mother in laws & teenage kids)

THINK NPTA RSPH

A Family run business established in 2006 offering industry accredited pest control & wildlife management at an affordable cost throughout Solihull & North Warwickshire.

0121 246 8879  
[www.piedpiperpestmanagement.co.uk](http://www.piedpiperpestmanagement.co.uk)  
[info@piedpiperpestmanagement.co.uk](mailto:info@piedpiperpestmanagement.co.uk)



# Pet Page

## Henry's Friends - your local, dedicated, dog walking service



My name's Michelle and over the years I have lived locally in Water Orton, Coleshill, Whitacre and Shustoke. I am currently establishing a dog walking service, covering B46 and a bit beyond, having previously been a primary school teacher and the manager of a local before and after school club.

'Never work with children or animals,' they say. Well, I've obviously never believed that anyway! There are many parallels to be drawn between being responsible for, and taking care of children and dogs; after all, they are the most precious things in people's lives.

My love of dogs has been lifelong but it became firmly established over the 13 years I walked my own dog, Henry, for

many happy miles every day throughout the North Warwickshire countryside.

After having to say goodbye to Henry, I decided to study for the City and Guilds qualification in Technical Competence in Dog Walking, which included not only practical assessments but also covered knowledge and understanding of current laws and legislation regarding the walking and keeping of dogs and also animal welfare. I'm fully insured and have a clear DBS (criminal records) check. I can't wait to share the fantastic walks I enjoyed with my dog, with other dogs in the B46 area.




If you are looking for a reliable and trustworthy local dog walker, or need pet visits or pet sitting, then contact 'Henry's Friends Dog Walking Service.' You can call, text or WhatsApp me on 07757 699434. Alternatively, find me on [facebook.com/henrysfriendsdogwalkingservice](https://www.facebook.com/henrysfriendsdogwalkingservice) or [Instagram at instagram.com/henrysfriendsdogwalkingservice](https://www.instagram.com/henrysfriendsdogwalkingservice). Let's see how I can help get your dog out and about and having fun.

### Calling all dog owners in B46 and a bit beyond!



Are you looking for a reliable, qualified, and dedicated dog walker? Then Henry's Friends Dog Walking Service is here to help.

What I offer:

-  **Dog walking:** rural or town walks
-  **Pet visits:** check-ins to ensure your dog is happy and comfortable
-  **Pet sitting:** company in the comfort of your own home, when you can't be there.

Contact Michelle at Henry's Friends Dog Walking Service for info:



Call or text 07757 699434



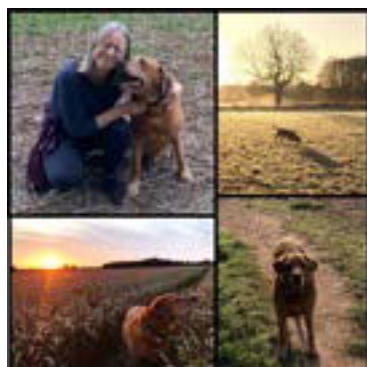
[instagram.com/henrysfriendsdogwalkingservice](https://www.instagram.com/henrysfriendsdogwalkingservice)



[facebook.com/henrysfriendsdogwalkingservice](https://www.facebook.com/henrysfriendsdogwalkingservice)



07757 699434



- ✓ City and Guilds Technical Competence in Dog Walking qualified
- ✓ Canine Basic First Aid trained
- ✓ DBS checked
- ✓ Fully insured





Birmingham  
**Dogs Home**  
est. 1892

## Christmas wishes to fill dishes

You might wish for jewellery, a brand new phone...  
But Christmas is simpler at Birmingham Dogs Home.

Because in truth, all we dogs wish,  
Is for a festive dinner to fill our dish.  
And with so many dogs, tiny and tall,  
We need your help more than ever before.

So please, kind humans, throw us a bone  
And here's to Christmas at Birmingham Dogs Home.

**It costs just £3 a day to feed a local homeless dog**

To feed a dog for a day text 'XMAS23' to 70331 to donate £3,  
70970 to donate £5  
or 70191 to donate £10\*

or donate online to help feed a dog for a week or every day in December and make their Christmas wishes come true.

Scan to choose your donation amount

f X Instagram YouTube in  
Registered Charity No. 222436

\*Birmingham Dogs Home needs to raise funds for this and for other charitable purposes. Fundraising, payments and donations will be processed and administered by the National Funding Scheme (Charity No: 1149800), operating as DONATE. Texts will be charged at your standard network rate. For Terms & Conditions, see [www.easydonate.org](http://www.easydonate.org)

## Birmingham Dogs Home - Forever homes



### Macey & Nut

**Breed:** German Shepherd Dog x  
**Gender:** Female **Age:** 11 years young

Nut and Macey are two adorable shepherd dogs looking for a loving and caring forever home.

Macey is lighter smaller shepherd with the smooth coat, whereas Nut is the darker fluffier female, who we have discovered she originally was born in Serbia.

Both Nut and Macey were brought into the centre as overweight strays, but they have come a long way since then. With the help and care of the team, they have made incredible progress with their weight loss and general condition.

These two have likely been through a lot in their 10 years of life, but they are resilient and ready to start a new chapter with a permanent home.

Nut and Macey are both very affectionate and enjoy spending time with people. They love nothing more than getting lots of cuddles and attention. They also get along very well with each other and enjoy each other's company, and hate being apart.

While they are still learning basic commands, they have shown that they are quick learners and eager to please. They also enjoy playing with each other in our paddock areas, where they can let loose and enjoy running around and being active.

While they can get excited and have zoomies from time to time, they also have a calm and laid-back side. They are capable of being very independent and self-sufficient, but they do love having a human companion.

If you are interested in giving Nut and Macey a loving and compassionate forever home, we invite you to get in touch with us today. These two deserve nothing but the best, and we know that they will bring so much joy and love to the right family.

If you are interested in adopting Macey and Nut, please contact the centre on 0121 643 5211 to enquire.



## Ward End Cat Rescue

**We are a small, home-based rescue, run solely by volunteers.**

WECR would like to wish all our fabulous supporters a very merry Christmas and a peaceful new year, thank you all.

Here are a few of our cats who are currently ready for adoption, they all need their forever homes. Circumstances at the rescue change regularly so please feel free to email us for more details of cats available, just send us a contact number, address and who lives in your household.

Clive is a handsome cat around 2 years old, he needs to be the only pet in the household but is a fabulous lad.



Maggie May is a wonderful shy cat around 11 years old who needs a lovely quiet home.



Fred is a lovely cat, aged approx 1-2 years old. He is very friendly but can be a bit unpredictable at times which adds to his cheeky charm.



Bertie is approximately 1 year old and a really loving friendly cat.



If you're looking to adopt a cat, or if you'd like to support the work of Ward End Cat Rescue, please visit our facebook page **WARD END CAT RESCUE OFFICIAL** or email us on [wardendcatrescueofficial@outlook.com](mailto:wardendcatrescueofficial@outlook.com)

## ADVERTISE YOUR BUSINESS HERE

For more information on how to advertise in any of our titles please call:

0121 749 7502 / 07805 430191 or email: [editor.postgroup@outlook.com](mailto:editor.postgroup@outlook.com)

## Christmas is almost here, are you and your dogs ready for Santa Paws?



Christmas is such a great time of year, and I hope you have a wonderful day. However, while being great, there are a few key safety aspects to be aware of so your dogs stay happy and safe.

**Here are some top tips: -**

- There are a lot of dogs with Christmas collars. Please remember that it's a legal requirement to have a tag on your dog's collar with your surname, address, including postcode when out in public. I'd also recommend your telephone number on there. Make sure if you've switched collars, you've changed tags.
- If you have visitors, they may not be as dog-aware as you. They may leave doors open or leave food or drinks lying around. Depending upon your dog, you might need to put an extra safety gate up by the front door and make sure your visitors know not to leave food or drink in reach of your dog.
- Christmas trees can be a very confusing thing for our dogs. We bring something that's usually outside indoors and that we encourage our dogs too.... well, you know what they love to do up or by trees, especially the boys!
- We cover the tree in sparkly squirrel tails, also known as tinsel, putting balls and food on it and then expecting our dogs not to go near it! How confusing must this be? Many of us have seen /experienced the reaction to a squirrel, balls we've encouraged them to play with, and the food speaks for itself. I would entirely avoid food on the tree if your dog can access it. If your dog is the sort of dog that doesn't go near the tree that's great, but if they do please don't get cross. Either pop a pen around it, put it where your dog can't get to it or move the bubbles up or off the tree, depending on your dog's height/desire to play with them.
- The all-important Christmas dinner. There are lots of dog-safe Christmas dinners out there but if you want to add a few tasty treats to their regular dinner, then remember your dog may not be used to these rich foods, so don't give too much, or your Christmas night and Boxing Day could become very messy and smelly clean-up operations.
- Christmas dinner leftovers such as turkey bones shouldn't be given to your dog. Bones splinter easily once cooked and can cause damage to the intestine and can cause choking if they get stuck in your dog's throat. Also, watch out for the Christmas stuffing, which often contains onions and garlic. Both these ingredients contain the toxic ingredient thiosulphate. Some other poisonous foods include Chocolate, raisins, grapes, nuts, mince pies, Christmas cake and panettone.
- **Poisonous plants**  
Mistletoe, holly berries, poinsettias, ivy and lilies are plants that we tend to have in the house at this time of year, but they are all very toxic.
- **Sleep**  
We know how much dogs love to sleep, and we know how tiring the fun of Christmas can be. Your dogs will still need their sleep, so make sure they've got a safe, quiet place to go off to and relax if the festivities get too much, you might even want to sneak off there yourself.

# Interiors & Decorating



**PLATINUM**  
INTERIOR DECORATING

## Mastering Interior Design: A Guide to Harnessing the Power of the Colour Wheel

### Introduction:

In the realm of interior design, colour plays a pivotal role in shaping the ambiance and character of a space. One tool that designers swear by is the colour wheel. Understanding how to use the colour wheel can empower you to create harmonious, visually appealing interiors that reflect your style and personality.

### The Basics of the Colour Wheel:

The colour wheel is a circular diagram of colours arranged by their chromatic relationship. Primary colours – red, blue, and yellow – form the foundation. Combining these primaries yields secondary colours – orange, green, and purple. Tertiary colours result from mixing a primary and a secondary colour. This organised layout simplifies colour relationships, making it easier to select and combine hues effectively.

### Creating Colour Schemes:

To wield the colour wheel effectively, start by exploring various colour schemes. Monochromatic schemes involve using different shades of a single colour for a cohesive look. Analogous schemes utilise colours next to each other on the wheel, creating a harmonious feel. Complementary schemes involve pairing colours opposite each other, providing a vibrant contrast. Triadic and tetradic schemes involve using three or four evenly spaced colours on the wheel, offering a balanced yet diverse palette.

### Understanding Warm and Cool Tones:

Colours are further categorised into warm and cool tones. Warm tones – reds, oranges, and yellows – inject energy and vibrancy into a space. On the other hand, cool tones – blues, greens, and purples – create a calm and soothing atmosphere. Knowing when to use warm or cool tones can drastically influence the mood of a room.

### Focal Points and Accent Colours:

The colour wheel aids in identifying focal points within a space. By selecting a colour that contrasts with the overall palette, you can draw attention to specific elements, such as a feature wall or a statement piece of furniture. These accent colours add visual interest and break up monotony.

### Neutralising and Balancing:

Neutral tones – whites, greys, and browns – serve as the backbone of many interior colour schemes. They provide a versatile canvas for other colours to shine and help balance vibrant hues. Understanding how to incorporate neutrals is essential for achieving a polished and cohesive design.

### Considering Saturation and Intensity:

The colour wheel doesn't just showcase different hues; it also illustrates saturation and intensity. Saturation refers to the purity of a colour, while intensity reflects its brightness. Striking a balance between saturated and muted tones prevents overwhelming visual stimuli and fosters a harmonious atmosphere.

### Creating Mood and Atmosphere:

Colours evoke emotions, and the colour wheel is a roadmap for setting the desired mood in a space. For a serene bedroom, opt for calming blues and soft greens. Energise a kitchen with warm yellows and reds. Understanding the psychological impact of colours allows you to tailor each room to its intended purpose.

### Experimenting with Trends:

While the colour wheel provides timeless guidance, it's crucial to stay attuned to current trends. Experimenting with trendy colours can inject a fresh, contemporary vibe into your interior design. Consider accent pieces, such as cushions or artwork, to incorporate trendy hues without a long-term commitment.

### Practical Applications in Design:

Let's apply the colour wheel to a real-world scenario. Imagine you're designing a living room. Start by choosing a dominant colour for the walls – perhaps a calming blue. Use the colour wheel to find complementary colours for furniture and accessories, such as warm-toned wooden accents or a vibrant orange throw pillow. Experiment with various schemes until you strike the right balance.

### Conclusion:

Mastering the colour wheel is a game-changer in the world of interior design. It empowers you to make informed decisions about colour schemes, focal points, and overall atmosphere. Whether you're a DIY enthusiast or working with a professional designer, embracing the colour wheel is the key to creating spaces that are not only aesthetically pleasing but also reflect your unique style and personality.

## ADVERTISE YOUR BUSINESS HERE


For more information  
on how to advertise in any  
of our titles please call:


**0121 749 7502 / 07805 430191** or  
email: [editor.postgroup@outlook.com](mailto:editor.postgroup@outlook.com)



**PLATINUM**  
INTERIOR DECORATING

Contact Jim or Clare  
for a free quote on:

 **0121 747 7202**

 **07814 566657  
or 07792 508819**

**We are a husband and wife  
painting and decorating team**

**All aspects of domestic and small  
commercial projects undertaken**

- Free written quotes
- Friendly, clean and reliable service
- Advice available on colour matching



[info@platinuminteriordecorating.co.uk](mailto:info@platinuminteriordecorating.co.uk)

[www.platinuminteriordecorating.co.uk](http://www.platinuminteriordecorating.co.uk)



# NHS England launches annual school careers contest



Participating schools are provided with a wealth of free learning resources and lesson plans. Previous entrants have emphasised what a fulfilling learning experience the contest is, with 90 per cent of teachers saying Step into the NHS has helped their students understand the range of career opportunities in the NHS.

The resources are aligned to the KS3 curriculum, helping teachers meet several of the Department for Education’s careers strategy aims and the Gatsby benchmarks for Good Career Guidance.

This year’s national winner, 14-year-old Tanvir Tamber, impressed the judges with a poster and video exploring the role of an A & E doctor.

Now the pupil at Derby Moor Spencer Academy, Derby, has been rewarded by seeing her winning entry tour her home town, including schools and shopping centres, on the side of an environmentally-friendly advertising van.

She said she had enjoyed researching a career for which she had a ‘genuine passion’. “The highlight was discovering the amount of insight needed and the range of conditions you have to be able to deal with, enabling you to discover your eventual specialism,” she added.

Tanvir’s teacher Carol Eziz said: “Our other students asked lots of questions and are really proud that one of their own has created something so wonderful.

“The competition gave us a great opportunity to promote thinking seriously about careers in the NHS and see that if you put in hard work and effort, amazing things can happen.”

Hundreds of schools take part in the Step into the NHS competition every year. This year’s resources are newly-refreshed and include a ‘ready to go’ lesson plan which can be delivered in just an hour.

Teachers can find full details here:-

<https://www.stepintothens.nhs.uk/secondary-school>

**Schools across England are being invited to join an exciting curriculum-linked contest which raises career aspirations and teaches pupils about the National Health Service.**

Developed in partnership with teachers, the annual Step into the NHS competition encourages secondary school students to research and create a job advert for an NHS profession while learning about more than 350 careers in the health service.

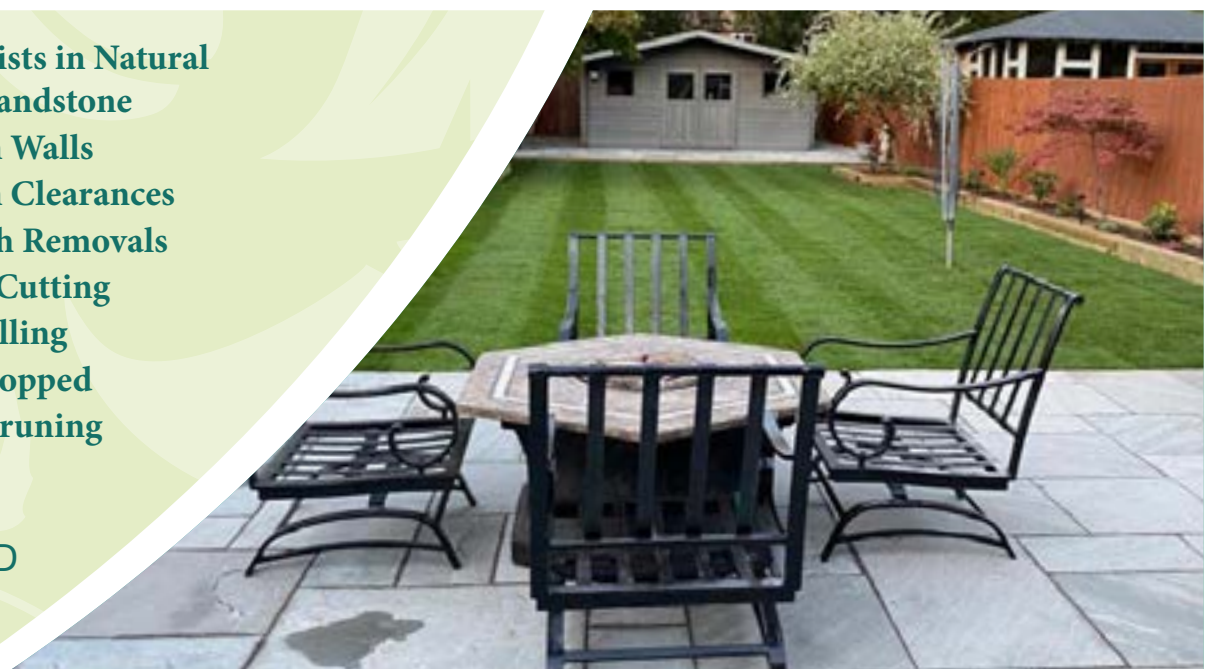
Winning pupils will be presented with Amazon gift vouchers and have the chance to see their work displayed in the local community.



- Block Paving
- Porcelain paving
- Resin Bond driveways
- Tarmacing
- Slabbing
- Drive Repairs
- Turfing
- Grass Cutting
- Fencing
- In-print concrete driveways

- Specialists in Natural stone/sandstone
- Garden Walls
- Garden Clearances
- Rubbish Removals
- Hedge Cutting
- Tree Felling
- Trees Lopped
- Trees Pruning

ALL WORK IS GUARANTEED & CARRIED OUT BY FULLY INSURED WORKMEN



Call for a FREE no obligation quote

T. 0121 770 0362 M. 07773 503816

[flowers-landscaping.co.uk](http://flowers-landscaping.co.uk)

# LOCAL SERVICES



**GODWOOD GLASS & GLAZING**  
Est 1982

- Broken Glass Replaced
- Broken or Misted Double Glazed Units
- UPVC & Aluminium Window Repairs
- Handles & Hinges Replaced
- Window & Door Locks Fitted
- All Types of Glass Fitted
- No Job Too Small

**FOR A FREE QUOTE CALL**  
Call 07787 804153 and I will call you straight back  
Your Local Castle Bromwich Glazier

## COLESHILL ROOFING

- UPVc Fascia & Soffits
- Tile, Slate & Flat Roofing
- Hi-Performance Torch on Felts
- Maintenance Free Guttering Repairs
- Full Insured for your peace of mind
- Skilled, Qualified Craftsmen

OVER  
**40**  
YEARS  
EXPERIENCE

**CONTACT US FOR A FREE QUOTATION**



**01675 462 344**

07956 890 488 / 07966 409 706

coleshill.roofing@yahoo.co.uk

[www.coleshillroofing.co.uk](http://www.coleshillroofing.co.uk)



**Xtreme Tree Care**

- Crown Thinning and Reduction
- Felling and Dismantling
- Pruning and Shaping
- Hedge Trimming and Removal
- Specialist Stump Removal

Fully Insured  
All Staff Fully Qualified  
20 Years Experience

For a free quotation from your Local Tree Surgeon call  
**07951 332 401**

11 Shawbury Cottages, Pump Lane, Shwytoka, Coleshill B46 2RW  
xtreemtreecare@aol.co.uk

## ADVERTISE YOUR BUSINESS HERE

For more information on how to advertise in any of our titles please call:

**0121 749 7502**

**/ 07805 430191**

or email:

[editor.postgroup@outlook.com](mailto:editor.postgroup@outlook.com)

*Julie*  
**ENGLISH**  
*Interiors*

BEDROOMS - BATHROOMS - KITCHENS - BEDROOMS

Create Your Perfect Space  
One to One Professional Advise & Guidance Every Step of The Way  
To Ensure Perfection  
Supply Only or Supply & Installation Service

Showroom: 205 Tyburn Road, B24 8NB 01214484290 or Contact [julie@julienglishinteriors.co.uk](mailto:julie@julienglishinteriors.co.uk)

## READ OUR PAPERS ON THE GO

[www.postgroupmidlands.com](http://www.postgroupmidlands.com)



## NHS Midlands radiology training gets £1.28million AI upgrade



**Patients and clinicians across the Midlands – and potentially across England – are to benefit from a £1.28million AI upgrade to radiology training facilities at County Hospital in Stafford.**

NHS England – Midlands provided the funding to develop a new training model at the Midlands Imaging Training Academy (MITA), allowing one consultant to simultaneously train and supervise learners across all regional academy sites, giving other consultants more time to spend with patients.

The new electronics and picture archiving suite (EPACS) is being piloted as a platform to develop AI learning and cooperation in imaging academies, with eye tracking teaching the AI algorithms based on human behaviours.

Using the newly installed XRNET high speed education network and state of the art EPACS workstations, it's now possible for remote trainers to teach and observe trainees in real-time, and to link education facilities and other national academies to share and collaborate using high-definition imaging.

When used with the already successful extended reality lab (ERL) trainees could be immersed in different spaces such as an MRI scanning suite or an A&E ward, providing lifelike, high-quality simulation training to teams of clinicians.

Dr Ingrid Britton, Midlands Imaging Training Academy Director and Gastrointestinal Radiologist, said: "The investment from NHS England has allowed us to upgrade our facilities to provide state of the art imaging training to our imaging staff, with the potential to link classrooms across the Midlands. This expands the capacity for training and has allowed us to increase the number of trainees providing diagnostic and therapeutic services to patients on emergency, elective and cancer pathways.

"The new simulation facilities for ultrasound supervision, CT and vascular diagnostic and interventional procedural work provide excellent learning practice to get students work ready for the fast-paced clinical environment."

Tom Kirkbride, Joint Director for Workforce, Training and Education at NHS England – Midlands, said: "This model is an example of how we are investing in services as part of the NHS Long Term Workforce Plan, to reform the way our healthcare staff work, harnessing new digital technology to allow them to focus on patient care.

"It is a huge benefit to patients, and we expect it to have a positive impact on winter pressures, as more of our imaging workforce can be trained by fewer consultants across a large geographical area, freeing up other consultants to have more time for patient care. Over time it should result in less travel time for clinicians to attend training, less costs to the NHS and lead to waiting lists being cut.

"This could be the first of a network built around the country to benefit patients and clinicians nationally and could potentially be available worldwide to deliver familiarisation training for international recruits, before they come to the UK to start work in the NHS."

## One million people complete The Oliver McGowan Mandatory Training on Learning Disability and Autism e-learning



people with a learning disability and autistic people mandatory for all health and care staff.

The e-learning is the first part of Oliver's training and prepares staff for a second part that involves meeting and learning directly from people with a learning disability and autistic people.

The programme comes in two tiers and is designed so staff receive the right level of training. Tier 1 has been designed for staff who require general awareness of the support autistic people or people with a learning disability may need, while Tier 2 is for those who may need to provide care and make more complex care decisions.

The first part of the training – the 90-minute e-learning package – was launched last November and has now passed one million completions.

As well as the e-learning, interactive online sessions for Tier 1 and face-to-face sessions for Tier 2 are also being rolled out across England. Both parts of the training must be completed in order to complete the programme.

The training programme has been co-developed from the beginning with expertise from people with a learning disability and autistic people, as well as their families and carers.

It follows a two-year trial which involved 8,300 health and care staff across England. Participants found there has been an increase in their knowledge, skills and communication with autistic people and people with a learning disability after completing the training.

**Over one million people have completed The Oliver McGowan Mandatory Training on Learning Disability and Autism's e-learning in the year since it was launched.**

The training will enable health and care staff to better support people with a learning disability and autistic people, with an understanding of how to work with them to meet their needs.

The milestone comes ahead of the seventh anniversary of Oliver's death tomorrow (November 11). Oliver died after being given antipsychotic medication, despite warnings that they were unsuitable for him, highlighting a lack of understanding of the needs of people with a learning disability and autistic people.

Oliver's mother Paula successfully campaigned to make training on caring for

The Health and Care Act 2022 introduced a requirement that CQC-registered service providers must ensure their staff receive training on learning disability and autism that is appropriate to their role.

Oliver's Training also supports the NHS Long Term Workforce Plan ambition by upskilling the wider health and care workforce to provide appropriately adjusted care for people with a learning disability and autistic people to reduce health inequality.

The programme has been developed in partnership by NHS England, the Department of Health and Social Care and Skills for Care.

Other examples of the NHS's commitment to improving health outcomes for people with a learning disability and autistic people include improving assessments, enhanced autism training for psychiatrists, and investment in community services so people can receive support close to home.

The e-learning has also been made available to international audiences via the eIntegrity platform following requests from across the world.

Navina Evans, Chief Workforce, Training and Education Officer at NHS England, said:

"To reach one million completions of this vital training is a fantastic achievement – but it is important to remind ourselves that this is only the first step in an important large-scale intervention to address health inequalities for people with a learning disability and autistic people.

"The training is a vital element of an ongoing culture change to ensure our services are safe,

accessible, and adjusted to people's needs.

"We are therefore urging employers across health and care to ensure staff get the training appropriate to their role – to make an impact now and for future generations."

Paula McGowan OBE said: "I am pleased that over a million people have a much better understanding of people who have a learning disability and autistic people.

"It is a significant milestone to have so many people now completing part one of The Oliver McGowan Mandatory Training, meaning that our learning disability and autism communities will have much better experiences living in society and accessing health and care.

"I know that if Oliver was here, he would be incredibly proud."

Tom Cahill, National Director for Learning Disability and Autism at NHS England, said: "This is an incredible achievement by all NHS staff and will make a significant contribution to improving the care and support of autistic people and people with a learning disability across NHS services."

Health Minister Maria Caulfield said: "It's incredible that more than one million people have now taken this essential training – and I am delighted to be one of them.

"Thanks to the tireless work of our NHS staff and people like Paula we are moving towards a healthcare system with the right culture, knowledge and skills to support people with a learning disability and autistic people.

"I am committed to improving the care we offer, and encourage both employers and employees to complete this vital training."

# Local Sports



## Doyle closes the gap for 850th career sporting feat



North Warwickshire's Pooley Country Park mountain bike course and surrounding footpaths was the main venue again for

Paddy Doyle who completed the tough short course mountain bike distances carrying mountain bike Instructor expedition kit of 30 lbs.

8.5 km - 21 min. 25.53 sec, 9 km - 28 min. 17.81 sec, 9.5 km 33 min. 43 sec, 10 km - 41 min. 11 sec, 10.5 km - 46 min. 02 sec, 11 km - 50 min. 13 sec.

Five days later Doyle then attempted another short course 3.64 miles cross country military 40 lb backpack speed march over the waterlogged, deep muddy footpaths and inclines at Wroxhall South Warwickshire reaching the finish line in 40 min. 09 sec. This challenge was especially hard due to the heavy rain showers and strong winds.

To date the former Para and ex RAF / Army reservist has achieved 839 career physical fitness challenges and World Records spanning ten different sporting disciplines.

The overall aim is to reach 1000 documented and recorded fitness endurance challenges and World Records, being the first GB endurance athlete globally to achieve the ultimate milestone. The challenge was originally set in 2021 by Scotland's multi World Record Holder and rated Scotlands fittest man William Cannon who currently holds over 630 records and fitness challenges.

*"I am looking forward to pushing myself again throughout the winter months regardless of the weather conditions it has been a tough 2023, but my support team have stuck with me all the way which I truly appreciate, I have not let the flooded and marshland terrain bother me when I have attempted all of the strength speed stamina feats I enjoy that environment as it tests me physically and mentally."*

## Water Orton & District Tennis Club



We would like to wish all our members and supporters a very Merry Christmas and a Happy & Healthy New Year. We look forward to welcoming all of our Members back to our community club in 2024. Our regular groups all listed below would love to see some new potential members who would be very welcome to come and try four "taster" sessions before deciding if you wanted to become club members or not.

**Saturday morning** 9.30am until 1.00pm Junior Group Coaching (3 x 1 hour sessions)

**Monday Night** 7.15pm until 8.15pm Adult Beginners

**Tuesday Night** from 5.30pm until about 8.00pm Adult Improvers Session

**Wednesday Night** from 6.00pm until 9.00pm Men's Night

**Thursday Night** from 6.00pm until 9.00pm Ladies Night

**Friday Night** from 6.00pm until 7.00pm Cardio Tennis Fitness Group

**Friday Night** 7.15pm until 9.00pm Adults Mixed Tennis

For any additional information please e-mail or text our club secretary (Paul) on 07538 601246 or e-mail [paul.messenger82@hotmail.co.uk](mailto:paul.messenger82@hotmail.co.uk)

Have a lovely Festive Season and we look forward to seeing you in 2024.



## Water Orton Cricket Club Social Events NEW YEARS EVE PARTY DISCO

Tickets now on sale from Pete Coles 07812 241046 or over the bar during opening hours.

Great party D.J. playing all your favourite party "hits" doors open 7.30pm Tickets £ 12 each

Saturday 2nd March 2024 Elton John Tribute with the fantastic Marcus Andrews

Tickets will go on sale at the start of 2024 and will be £10 each

Watch out for the future editions of the Coleshill and Castle Bromwich Post to get details of our 2024 Quiz Nights. Our Charity Fundraising Night with a top Drag Queen and also live bands during

the year. We have also booked several top class Tribute Nights for 2024 including Lionel Ritchie, Tina Turner and the fabulous Garry Pease with his ROD STEWART EXPERIENCE.

See you there hopefully, and a big thankyou to our regular customers for your continued support. Newcomers, please just give us a call, you will be very welcome.

**Hope you all have a MERRY CHRISTMAS & A HAPPY NEW YEAR**



# Coleshill Town F.C.

## COLESHILL TOWN FC JUNIORS XMAS RAFFLE

Roll Up, Roll Up get your Christmas Raffle tickets here



Sponsored By  
**Coleshill Carnival**

The Coleshill Town FC Juniors Xmas Raffle is our main fundraiser for the year and allows us to plan for the future development of the club. There are lots of lovely prizes especially designed for the Xmas period. Please buy a ticket or donate an item for the hampers from any of our players from our Seven teams or our New Mini Soccer club. Or send me a message on the number below.

A huge thanks to the Coleshill Carnival for their support.

Alan Beckett 07791740976



### Fixture List

**Pitching in Northern Premier League Midland Division games unless stated.**

- |   |  |
|---|--|
| <b>Saturday 9th December</b><br>Away to Gresley Rovers.       | <b>Saturday 13th January</b><br>Away to Lye Town.                |
| <b>Saturday 16th December</b><br>Home to Sporting Khalsa.     | <b>Saturday 20th January</b><br>Away to Cambridge City.          |
| <b>Saturday 23rd December</b><br>Away to Loughborough Dynamo. | <b>Saturday 27th January</b><br>Home to Coventry Sphinx.         |
| <b>Tuesday 26th December</b><br>Home to Bedworth United.      | <b>Saturday 3rd February</b><br>Away to Quorn.                   |
| <b>Monday 1st January</b><br>Away to Sutton Coldfield Town.   | <b>Game to be confirmed:</b><br>Birmingham Senior Cup 3rd Round. |
| <b>Saturday 6th January</b><br>Home to Corby Town.            | <b>3.00pm kick off unless stated.</b>                            |

## Coleshill Town FC match reports

### All Northern Premier League Midland Division games

#### Saturday 28th October

##### Coleshill Town 2 v 1 Cambridge City

A First win for new Manager Paul Hathaway, but Coleshill had to wait late to get their reward. Cambridge scored early in the first half and defended well to hold onto that lead but with just ten minutes remaining Coleshill were awarded a penalty and Sam Fitzgerald calmly slotted home. Two minutes later young Ashton Demulder smashed an absolute screamer into the net, definitely a contender for goal of the season, to take the points.

#### Saturday 4th November

##### Coleshill Town 3 v 1 Walsall Wood

For an hour there was nothing between these sides but in a devastating 13 minutes Coleshill scored three times. Lewis Archer on 60 mins, his first for the club, Lewis Collins on 62 mins, then Ashton Demulder on 73. Wow! Walsall pulled a goal back in the dying minutes but it was Coleshill's day!

#### Saturday 11th November

##### Hinckley LR 3 v 2 Coleshill Town

Coleshill scored early, 3 mins, a fine header from a corner by Nial Rowe, and late, 90 mins, this time a Harry Higginson header, but in between Hinckley were the more determined side and deservedly scored three goals in between to take the points.

#### Monday 13th November

##### Birmingham Senior Cup Round 2

##### Coleshill Town 0 v 0 Redditch United

Coleshill matched Level 3 club Redditch United for 90 minutes then won the tie in the Birmingham Senior Cup 4-2 on penalties. With the score at 0-0 at Full Time after a game of few chances the contest was decided by a penalty shoot out. Coleshill's scorers were Ryan Nesbit, Alex Tomkinson, George Washbourne and Lamin Ceesay with Goalkeeper Lewis Fenney saving Two of Redditch's spot kicks.

#### Saturday 18th November

##### Coleshill Town 2 v 3 Spalding United

Spalding are the favourites to take the title this year and are the best, most experienced and professional side to visit Pack Meadow so far this season. In an impressive first half Spalding took a two goal lead. Coleshill looked dead and buried but they stood up to the challenge and fought back to level the score with goals from captain Niall Rowe and Lewis Collins. Unfortunately the visitors hit back in the dying seconds of the game to take all three points but Coleshill can be proud of their efforts.

#### Saturday 25th November

##### Anstey Nomads 3 v 1 Coleshill Town

A game of few chances but the home side made the best of the opportunities that came their way and were 2-0 up at the break. A third goal early in the second half killed the game but for the last 15 minutes Coleshill finely looked the better side and got a consolation goal from George Washbourne.



# SHARE A STORY

contact:

[serena.postgroup@outlook.com](mailto:serena.postgroup@outlook.com)



# Walk On

## FLOORING

CARPET AND VINYL SPECIALISTS

### OPENING TIMES

Mon - Fri 9:00am - 5:30pm  
Saturday 10:00am - 4:00pm  
Sunday CLOSED

TEL: 0121 770 9680

We be closed Friday 22nd December 2023 Reopen on Tuesday 2nd January 2024 Open As Usual

Colin & Owen and all the of the staff at Walk On Flooring would like to wish all of our customers past and present a very Merry Christmas and a Happy New Year for 2024 We will see your all in the new year

HALF PRICE CARPET REMNANTS WHILE STOCKS LAST

Vinyls  
From £8.99 sqm

Carpets  
From £6.99 sqm

Laminate  
From £11.99 sqm

Rugs  
From £30 each

### Why choose Walk On Flooring?

- \* Local fitters with over 25 years trade experience
- \* Wide range of carpet and vinyl pattern books
- \* All work is guaranteed and insured

Home Selection Available!

[www.walkonflooring.co.uk](http://www.walkonflooring.co.uk)

Quality room size remnants from only £29.00

Like us on Facebook

Showroom: Unit 3, Tile Cross Trading Estate, Tile Cross Road, Tile Cross, Birmingham B33 0NW