

the Coleshill Post

ADVERTISE YOUR BUSINESS HERE

0121 749 7502
07805 430191

email: editor.postgroup@outlook.com

Covering: Coleshill North, Coleshill South, Coleshill Industrial, Water Orton, Curdworth, Maxstoke, Shustoke, Lea Marston, Marston & The Whitacres

November 2023 Issue 117



postgroupmidlands.com

PICK ME UP FREE



EVANS
DERRY
SOLICITORS

High quality, cost-effective **legal services**

Call us on **01675 464400** or visit www.evansderry.com

5 Church Hill, Coleshill / 30 Station Rd, Marston Green / 133 Long St, Atherstone

OUR SERVICES INCLUDE

FAMILY LAW / PERSONAL INJURY / WILLS AND PROBATE / PROPERTY

The Coleshill Community Hub Macmillan Coffee Morning Success

On Friday 29th September, it was the annual Macmillan Coffee Morning, this is a great opportunity to bring people together to have fun, chat, eat cake and coffee, and raise some money to help people with cancer. This disease touches everyone's life nowadays, be it a family member, a friend, a work colleague or a neighbour. We all seem to know someone who is challenged with this cruel, complex illness.

This year we are proud to announce that the sum obtained, is a staggering **£1116.00** for Macmillan!!! FABULOUS

Full story page 23



invisalign OPEN DAY!

Date: Saturday 11th November
Time: 9am-1pm

SAVE OVER **£900!**

- Free digital scan worth £149
- Free retainers worth £425
- Free tooth whitening worth £349

Reserve your slot today by calling our reception team on 0121 747 2071 or email us at info@76dental.com

112 Coleshill Rd, Water Orton, B'ham, B46 1RD



Do you suffer from hard skin, cracked heels, thickened & or discoloured toenails?
Worried your feet won't keep up with the family?
Do you struggle to manage your own feet?



Make sure your feet are in safe hands



tel. **0121 749 6313**
www.walshpodiatry.co.uk

Our highly skilled Podiatry led team can put you at ease and provide specialist treatment to help your feet look and feel wonderful again
329 Chester Road, Castle Bromwich, Birmingham, B36 0JG reception@walshpodiatry.co.uk

Not tried us yet?
£5 OFF
with this Advert
*New Patients Only



the **ColeshillPost**

the **CastleBromPost**

The Post Newspaper Group is an independent hyper-local tabloid newspaper publisher distributing 2 titles with over 14,000 copies to homes and businesses in Coleshill and Castle Bromwich each month, free of charge.

Our main aim is to provide hyper-local news and information to the community where it would otherwise not be accessible. We also offer the most effective platform for local businesses to promote themselves to their target audience. This benefits the entire community and improves social-cohesion.

Any views, articles and columns expressed in this publication are those of the contributors and not necessarily those of the Publisher, nor indeed their responsibility.

Advertising in our publications

In order to deliver **The Post** free to our readers we rely on advertising revenue from local companies.

We work with you to create the most appropriate package for your business, after all it's in our interest to make each advert work and keep everybody happy.

We can design professional artwork if needed and offer sound advice based on years of knowledge.

By choosing to advertise with us you are also showing your support for the community and the customers you hope to serve.

Getting in touch

Sales:
editor.postgroup@outlook.com
07805 430191

General inquires:
serena.postgroup@outlook.com
0121 749 7502

WHY CHOOSE HYPER-LOCAL?

People prefer to buy locally and they trust local print media above all else.

Show support for the community where your customers live.

Hyper-local content - every page dedicated to the local area.

Bringing the community together by making all information available in one place.

Affordable and effective advertising packages to help small businesses promote themselves better and cheaper.

Help to increase footfall on the High Street and boost attendance at local events.

Give groups, clubs and organisations space to promote themselves and let local people know exactly what is available on their doorstep.



CIRCULATION

the **ColeshillPost**

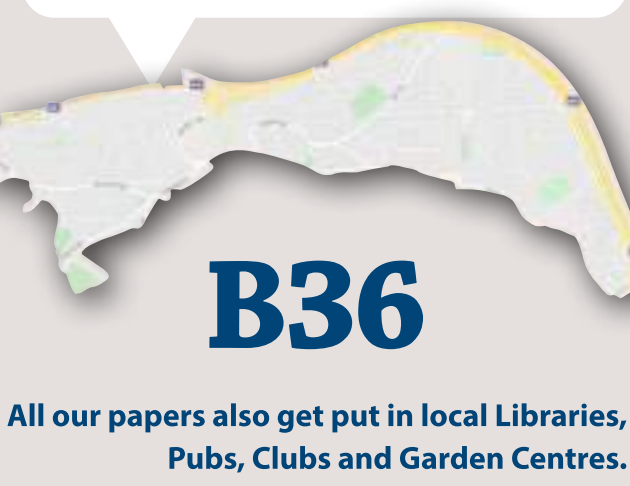
Coleshill North	Lea Marston
Coleshill South	Marston
Coleshill Industrial	The Whitacres
Water Orton	Also dropped in
Curdworth	Minworth
Maxstoke	
Shustoke	



the **CastleBromPost**

Castle Bromwich Hall	Green Lane East
Park Hall	Chester Road West
Parkfields	Chester Road East
Green Lane West	Bradford Road

Also dropped in
Shard End and Marston Green



All our papers also get put in local Libraries, Pubs, Clubs and Garden Centres.

ALL PLUMBING & HEATING JOBS

Finance NOW available through Kanda from 0% APR



- Boilers install & Service
- Bathroom Fitting
- All plumbing heating & Gas jobs

Boilers Service £60



Contact us for a **FREE** quote

Call Joe on: 07792 470 504
www.jpd-plumbing.co.uk



Your trusted local Electrician

Do you struggle to find someone to carry out small jobs?

- ✓ Extra Lights
- ✓ Free Quote
- ✓ Whole Home WIFI
- ✓ Fully Insured
- ✓ New Fuse board
- ✓ Reliable Service
- ✓ Additional Sockets
- ✓ Fully Qualified
- ✓ Landlord and Homebuyer Reports

Call Tom today
01675 591047

www.finchhattongroup.co.uk



NEED EXTRA STORAGE?

Store it from only

£20

per week



absolute
SELF STORAGE LIMITED

www.absolutestorage.co.uk
07704 955750 | 01675 464446 | hires@absolutestorage.co.uk
Jubilee Industrial Estate, Gorse Lane, Coleshill B46 1JU



Orton
Installations

Windows • Doors • Conservatories

Guardian Warm Roof Specialist



- | | |
|---------------------------------------|----------------------------|
| Windows (UPVC & Aluminium) | Garage Doors |
| Doors (including Bi-Fold & Composite) | Roof Lanterns |
| Conservatories | Domestic & Commercial Work |

T 0121 730 1587 / 07732 561 569

E matthew_taylor10@sky.com

32 Birmingham Road, Water Orton, Birmingham B46 1TH

WCC YUouth Conference
Voices of Tomorrow

We are excited to announce that registration is now open for our 2023 Warwickshire Youth Conference: Voice's of Tomorrow organised by young people, for young people!

Child Friendly Warwickshire invite all young people aged 11-17 or up to 25 with SEND who live or go to school in Warwickshire to attend. The event set to take place on Friday, 3rd November 2023 and will be hosted at the Panorama Suites in the Rootes Building at Warwick University.

At this event, young people can share their ideas and thoughts on important topics with their peers. The conference offers various workshops and networking opportunities aimed at sparking valuable conversations and collaboration on themes selected by young people! These include:

- Climate Change & Sustainability
- Safety in Warwickshire
- Green Open Spaces
- Mental Health & wellbeing
- Careers/Opportunities
- Let's Talk Money
- Space for girls
- Identity (LGBT+)

For any young people interested in registering, visit www.childfriendlywarwickshire.co.uk/youthconference

VOICES OF TOMORROW:
Warwickshire's Youth Conference

FRIDAY 3RD NOVEMBER

FRIDAY 3RD NOVEMBER 2023
10 AM - 4 PM,
The Slate Conference Centre
Warwick University

Sign up to Warwickshire's Youth Conference 2023 at www.childfriendlywarwickshire/youthconference OR Scan the QR Code

Warwickshire County Council

Landscaping
AUTUMN OFFERS

Porcelain Paving
City Gris
600 x 600 x 20mm
WAS £28.40
£24.00 per m²
£26.80 inc. VAT

Rajstone Natural Sandstone
Bundi Grey
20/25mm Thick
£18.95 per m²
£22.74 inc. VAT

DON'T MISS OUT! WHILE STOCKS LAST!

EH Smith
Builders Merchants

Chester Road
Castle Bromwich, B36 0LB

COLESHILL'S
CHRISTMAS
Cracker

THURSDAY
30TH NOVEMBER
2.00pm – 8.00pm
Coleshill High Street & The Town Hall

- CHRISTMAS LIGHTS SWITCH ON
- CHRISTMAS MARKET • SANTAS GROTTO
- FAIRGROUND RIDES PLUS MUCH MORE...

Experience the Magic of
Coleshill's
Late Night Shopping

Supported by

www.northwarks.gov.uk/coleshillchristmas

ORCHARD NURSERIES

1973 - 2023

Celebrating 50 years in Water Orton

Our Christmas Shop is now OPEN

- decorations, baubles, cards, lights, gift boxes, reindeer, wreath making components.
- lovely selection of handbags, purses and wallets and other gift ideas.
- Our beautiful, quality Nordman nonshed Christmas Trees arrived towards the end of November.
- Homemade Holly Wreaths and Crosses also available from end November.
- **WHILE STOCKS LAST**, winter flowering Matrix pansies and Violas **BUY ONE GET ONE FREE.**
- **LOGS AND COAL**
- Bird Tables and wide selection of loose bird food.



Traditional Holly Wreath Making Workshop

All materials supplied and a delicious Coffee and mince pie £30pp Sunday 26/11. @ 11am

BREAKFAST WITH SANTA AND GROTTO VISITS

Our fabulous Santa will be here as follows:
Breakfast with Santa and grotto visit.

Sunday 17/12. @ 9.30 and 11.30 Saturday 23/12. @9.30 and 11.30

To include a Traditional English breakfast (veggie and vegan options available if preordered), croissants, cracker, tea or coffee. The children will then make reindeer food with Mrs Claus before visiting Santa in his Grotto.

£15 per adult and first child, additional children £12.50.

TUESDAY 19TH DECEMBER

Grotto visits available for preschoolers and SEN, children.

Grotto only visits £7.50 per child. (Any date)

CHRISTMAS EVE BREAKFAST WITH SANTA

- AS Above but the children can also decorate their cookie for Santa and receive a carrot for the reindeer. 9.30 only session.
- Grotto only visits also available.

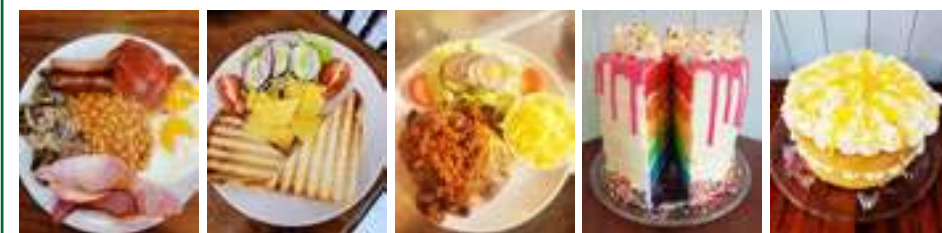
All above need to be prebooked and a deposit paid.
Call on 07450102855, or message our FB page.



The GARDENERS REST TEAROOM
Tea, Coffee, Cakes, Light Snacks - Eat in or Takeaway

Our Christmas Afternoon Tea and mini Afternoon Tea available from end of November. Please call or message to book.

Come and enjoy our freshly cooked breakfast, Vegan and vegetarian options, hot and cold sandwiches, toasties, jackets, cream teas and of course homemade cakes - takeaway options available
Afternoon tea, prebooking required for up to 25 people
Whole cakes by preorder
Traybakes and brownies also available to order
Check out our Facebook page for more details
Booking welcome, message us or call
Open currently Monday/Tuesdays 9.30 - 2pm
Wednesday/Thursday/Friday/Saturday 9.30 - 3pm
Sunday 10.00 - 2pm



Orchard Nurseries, Birmingham Road, Water Orton B46 1TG
Tel: 0121 749 7266 / 07450102855
Julie_heenan@yahoo.co.uk

ORCHARD NURSERIES | BIRMINGHAM ROAD
WATER ORTON B46 1TG
0121 749 7266
OPEN 10-5 MON -SAT 10-4.30 SUNDAY

Solihull Hearing Centre

From Mon 30th October to Wed 8th November, we will be demonstrating a new TV streamer. Supplied free of charge to anyone ordering hearing instruments this week. This accessory enables you to hear your TV directly into your hearing aids, whilst enabling family members to have the television at normal listening volume

Experience matters - over 60 years and counting

Solihull Hearing Centre is an independent, local, family run business now in its third generation, providing affordable hearing services for all clients. The business has helped thousands of clients to achieve excellent hearing standards, including ambassadors Ben Cohen MBE and Tony Jacklin CBE.

Long-standing, exceptional service

In 1952, Ernest Syner founded the business as the very first hearing aid specialist in Great Britain to be registered with governing body BSHAA. Today, Ernest's son Peter runs the business alongside his own two sons, Charles and Steven. All three family members are experienced and highly qualified experts in hearing care, holding full BSHAA and HCPC registrations.

Friendly, expert advice from hearing professionals

As hearing aid specialists, Solihull Hearing Centre is proud to offer custom-made hearing instruments from leading brands, as well as fitting services and assessments. From the first audiometric test, right through to on-going monitoring aftercare, the Syner family guarantee to support their clients every step of the way on their journey to better hearing.

Affordable prices, outstanding results

Trust in Solihull Hearing Centre's history of unparalleled customer care and expertise in hearing technology.

FREE TV streaming accessory with any Hearing Instrument ordered during our Open Week

Call to book an appointment or just pop in to see the friendly team



INVISIBLE & COMFORTABLE

These new invisible hearing aids are as light as a feather and pack power far above their size and weight. They are so comfortable we guarantee you will forget you are wearing them.



HEAR YOUR TV CLEARLY

The latest technology enables you to stream the sound from your TV directly into your hearing aids which means you hear the TV clearer.

“SEE-TRY-HEAR!”

AT OUR SPECIAL 10 DAY EVENT
on Mon 30th Oct to Wed 8th Nov

Call us for an appointment today
at Solihull Hearing Centre on **0121 705 7177**

All the latest Hearing Instruments will be available to try. If you are unable to attend on the 10 day event we will be pleased to make an appointment to see you in your own home to carry out an hearing test and demonstrate the latest hearing techniques.

CALL US TO START YOUR JOURNEY TO BETTER HEARING TODAY

- ✓ Free Hearing Check
- ✓ Home Visits Available
- ✓ Microsuction Wax Removal
- ✓ Invisible Hearing Aids

29 High Street, Solihull B91 3SJ
(2 doors from Greggs the Bakers)

Tel: 0121 705 7177 • www.suttonhearingcentre.co.uk
Opening Hours: Monday to Friday 9.30am - 4.30pm

ALSO AT
Sutton Hearing Centre,
46 South Parade,
Sutton Coldfield,
B72 1QY
Tel: 0121 321 3153

NOT MADE YOUR WILL YET? DOES IT WORRY YOU THAT...

Your children may NOT inherit all of your home or your hard earned savings... but the Government and others could!

Care Fees, Inheritance Tax, Huge Legal Fees and more devastate thousands of families, often unnecessarily.

We come to you at a time to suit you for a FREE home visit.

With the RIGHT WILL and advice, you can help ensure the maximum possible goes to those you love!

It all starts with a Will from **£95.00+VAT***
*standard basic Will



Confused? Concerned? Call Paul!

0845 055 9415 | 07980 780709
paul.palmer@accordwills.co.uk

Protect your Home

Is your home your most valuable asset? Have you worked hard your whole life to pay for and maintain it?

For most people, the answer to both of those questions will be a resounding yes. So with that said, why have so many people still not safeguarded their home the RIGHT way?

Imagine this...

You've made a Will, stating that, in the event of your death, you intend for your spouse to inherit everything, including your share of the family home. But what if your spouse needs care in later life? Your spouse may be expected to pay for their care themselves... but care fees are getting more and more expensive every year, costing anywhere between £26,000 and £52,000. How can they afford to pay for their care fees and leave some money as inheritance for your children?

This is an upsetting scenario... and unfortunately, it could happen to any of us without the right protection.

The sad truth is that around 200,000 family homes are sold every year to pay for care fees. Estates are drastically reduced- sometimes to nothing at all- to pay for care, leaving beneficiaries with little to no inheritance. The lower limit for care fee means testing is currently set at £14,250. However, your loved ones' inheritance could be even less than this simply because the home and other assets were not protected in the right way.

Don't leave your home open to any risks.

All of this can be avoided- with careful planning and professional advice, you can protect your home and savings so that your children can benefit as much as possible. Putting yourself in control means you'll prevent government authorities and other parties getting their hands on your assets.



For Couples

If you jointly own your home, we can protect your property with one of our powerful Protection Wills. These will provide your partner/spouse with a right to continue to occupy the property and buy a replacement property if

necessary. The capital share you have in the property will also be protected. The property is also safeguarded from local authority means testing.

The ideal scenario is that half the property is protected from loss, and the other half is disregarded by local authorities. What this means for inheritance is that at least half of the property's shares will be passed down to your children.

This plan of action is applicable even if you have a mortgage!

Future stress and heartache for your family and beneficiaries can be avoided, but you must act sooner rather than later. If you fall ill and require permanent care, or if you unfortunately lose mental capacity for any reason, it will be too late to protect your home and assets.

Act now!

Sadly, many people put off planning for the future until its too late, leaving children and loved ones devastated to realise that the situation could have been easily avoided. The sooner planning is put into effect, the more effectively we can help you ensure that your assets go to those you love ... not those you don't!

Do you have Savings?

While the family home is usually the most valuable asset, we can also help you to protect your savings. Speak to us today to find out the best way to protect your assets.

Protect your Home and your Savings from unnecessary, avoidable losses. Accord can help ensure your loved ones benefit as much as possible from your estate.

Act today and protect those you love. If you want to be certain that your assets will pass down your loved ones or children you'll need more than a basic Will.

Accord Legal Services Ltd will help you every step of the way.

For more information please contact....

Paul Palmer
0845 055 9415 or email;
paul.palmer@accordwills.co.uk

FLAIR DOOR CENTRE



5 Station Rd, Marston Green,
Birmingham B37 7AB

Telephone: 0121 779 2257

Checkatrade

OPENING TIMES
MONDAYS TO FRIDAY 9AM - 3PM
SATURDAY 9AM - 2PM
CLOSED SUNDAY

6/4 panel doors £90
30inch doors

Vertical 5 line Fitted for
£100 including handles
30inch doors

HOT DEAL
OAK UNFINISHED
FREYA

Supply £80
Fitted £145
30 inch doors

Other sizes available - Minimum 3 door order

WE ALSO SUPPLY AND FIT COMPOSITE DOORS - UPVC DOORS - REPLACEMENT GLASS PANELS - REPLACEMENT LOCKS FOR ALL DOORS.

COLESHILL Windows And Doors Ltd



OVER 20 YEARS EXPERIENCE

At Coleshill Windows & Doors Ltd we believe in doing business the right way, by putting you first. That means no hard sales push, fair prices and only the highest standards of work.

✓ Windows & Doors

✓ Composite Doors

✓ Conservatories

✓ Equinox Warm Roofs

✓ Roofline & GRP Roofs

Tel: 01675 464 661
Mob: 07789 855655
www.coleshillwindows.co.uk

The local, family owned
business you can trust!



The Shabby Attic

The shabby Attic is now buying precious metal, we will take a look at anything you bring in and give you a fair and honest opinion and hopefully a cash offer on the spot!

We are interested in any of the following:

- Broken jewellery
- Old Coins
- old watches
- Silver Cutlery
- Silver Flatware
- Dental Gold
- Pocket Watches

Whether you have one item or a bundle, unsure what you have? No problem, we will take a look, free of charge.

Competitive prices paid, cash paid instantly or bank transfer.

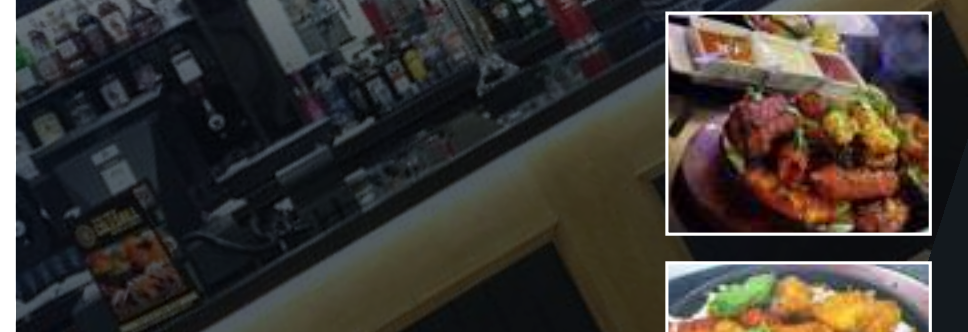
Home visits Available

Have anything unusual or unique? bring it to us, we may buy it from you. We work closely with Dealers and collectors to get you the best price!!

You could be sitting on a fortune - you never know?

82 High Street, Coleshill B46 3AH Tel.07528964681

THE NEW COLESHILL BAR & GRILL



• We cater for large parties and events.

• We are taking bookings for Christmas

• 15% off all collection orders for December.



STATION ROAD, COLESHILL
BIRMINGHAM B46 1JZ

info@thecoleshillbarandgrill.com

Opening hours Sun to Thurs 12 to 10pm | Fri & Sat 12 to 11pm

TEL: 0167 546 3730 @thenewcoleshillbarandgrill



Hello from your local Slimming World groups



Welcome to October, the month of Halloween and at Slimming World were certainly enjoying all the healthy seasonal pumpkin and squashes on offer. In our groups there's always lots of help with money saving ideas and our newest budget friendly recipe book **Air Fryer & Friends** is going down a storm! This month we've brought you Ally's story. Ally is so grateful to her best friends who encouraged her to join their group, and with our 'Introduce a friend' (to your group) and earn yourself a free week offer now on until 23rd December it gives more time for our members to shout out about their success and be a friend to others who might need that initial support. So, if you know any Slimming World member ask them for an introduction and come along, there's always a warm welcome waiting. Wishing you a happy and healthy month ahead...
Toni x (07971 686 698)

Ally's Story



In the five years leading up to this moment, losing over 3.5 stone and being named Woman of the Year in my group, I'd been lower than I ever thought you could get. In 18 months, I'd lost my dad, got divorced and had huge financial turmoil. I didn't know how to cope mentally so I coped physically with emotional eating. I don't think I am alone in that, stress eating huge amounts of sugary or carb laden food and not even enjoying them because of the sadness and guilt that would take over every bite. I was the first to joke about myself to premeditate judgement, outwardly bubbly but inwardly hating. I was in plan-cancelling, mirror-avoiding, clothes-hiding denial. A constant overwhelming sense of despair, not knowing how to self-soothe or even simply where to turn.

I'd slowly started the steps of what my kids call my life glow-up. I'd got a beautiful new house, an exciting new job and mentally so much stronger however I was still incredibly overwhelmed about my weight and eating. My two best friends had been attending Slimming World Fordbridge Group for a while and started gently encouraging me to go along. My first day there in January this year turned out to be our consultant Jacquie's first day too. Fresh out of training Jacquie was ready to help her own members achieve their weight loss goals just like Slimming World had already helped her achieve her own, losing over 6 stone as a member before training to be a consultant. I remember us both being incredibly nervous at what we now see as the start of our journey together.

Jacquie is nothing short of incredible. She has created a completely safe space where we hold genuine joy at each other's achievements, be that a good loss or simply making good choices. Resources upon resources with emotionally intelligent support, the biggest part of me staying on track and truly enjoying the journey is our group. I've found the plans to not only be easy to follow but flexible and able to accommodate whatever life brings. Every week in group we share tips, ideas and recipes as well as learning ways of overcoming old habits that hold us back, like my emotional eating. Nine months later and three and a half stone down and the self-confidence is now

oozing out more and more each week. Re-finding my style and sense of self. It's the non-scale victories, like going down clothes sizes, or being able to climb the stairs without getting out of breath that are amazing! The fullness of hope and true friendships keep me returning and thoroughly enjoying this journey to the new life I am creating. I honestly feel so lucky that my two besties encouraged me to join slimming world. I am so proud to be a part of this group, so grateful that we sit here week in and week out giving each other the moral support as we do this for ourselves. Every single week we turn up and there's Jacquie, arms wide open with smiles and support in wild abandon. Group is always interesting with loads of support and resources to help us all. We celebrate together and support each other when we have challenges. The biggest key for me has been staying to group, I feel genuinely happy on a Thursday to be walking in. I love our group, it's where the magic happens.

By helping people to lose weight and live a healthier lifestyle, joining Slimming World can dramatically reduce a member's chances of developing cardiovascular disease

On average, our members lose a clinically significant 5% within the first 3 months which means that they already start seeing health benefits such as less joint pain, improved mobility, less breathlessness, better sleep and reduced blood pressure.

Members following Slimming World's Food Optimising healthy eating plan enjoy a diet of filling and satisfying everyday foods - including fruit, vegetables, eggs, poultry, lean meat, fish, beans, pulses, pasta, rice and potatoes.



Cheesy rice-stuffed squash

With gooey melted cheese and slow-cooked, lightly spiced butternut squash, this treat is perfect for autumn
Ready in 1 hr 40 mins Serves 4 | 6 Syns per serving
(Syn free if using cheese as Healthy Extra A)

Ingredients:

- 2 medium butternut squashes, halved and deseeded
- Low-calorie cooking spray
- 1 onion, finely chopped
- 2 garlic cloves, crushed
- 15 green cardamom pods, seeds removed and crushed (pods discarded)
- 1 tbsp cumin seeds
- 300g cherry tomatoes, larger ones halved
- 175g mix of dried basmati and wild rice (or long-grain and wild rice)
- 500ml hot vegetable stock
- 150g kale, woody stems discarded
- 160g reduced-fat mature Cheddar, grated
- Mixed leaf salad, to serve

Method

1. Preheat your oven to 200°C/fan 180°C/gas 6.
2. Put the squash halves, cut-sides up, on a large non-stick baking tray. Spray with low-calorie cooking spray and bake for 1 hour, or until the flesh is soft.
3. At the same time, spray a large, deep, non-stick frying pan (choose one you can put a lid on, as you'll need to cover it later) with low-calorie cooking spray and put it over a medium heat. Add the onion and cook for 5-6 minutes, stirring often, until it begins to soften. Add the garlic and cardamom and cumin seeds with a large splash of water. Increase the heat to medium-high and stir-fry for 1-2 minutes until fragrant.
4. Add the tomatoes, rice and stock. Bring to a simmer, then reduce the heat to medium-low, cover and cook for 10 minutes (you should see a little steam rising from the pan - if you don't, increase the heat slightly).
5. Drop the kale on top of the rice mixture, re-cover and cook for 10-12 minutes, until the kale is soft and the rice is just tender. Season lightly and set aside.
6. Remove the squash from the oven and increase the temperature to 220°C/fan 200°C/gas 7. Gently scoop out the flesh from the squash halves, leaving a 1cm border. Stir the flesh through the rice mixture with half the cheese, then fill each squash half with a quarter of the mixture. Divide over the remaining cheese and return to the oven for 15-20 minutes until the cheese is golden. Serve 1 squash half per person with the salad.



yes you can

with Slimming World

Monday

- Castle Brom** - The Baptist Church, 5.30 & 7.00pm Claire - 07917867577
- Tile Cross** - St Peters Church, 4.00 & 5.30pm Nataley 07939 949136
- Yardley** - St Edburghas Church Hall, 9.00am, 3.30 & 5.30pm Jacqui 07814 675180

Tuesday

- Coleshill** - The Catholic Church (sacred Heart & St Teresa) 3.30pm, 5.00pm & 6.30pm Toni 07971686698
- Kingshurst** - Seeds Of Hope, St Barnabas CH, 5.00 & 6.30pm Diane 07432 123206
- Kitts Green** - Evangelical Church, 5.30pm Becki 07864 872816
- Shard End** - Aylesford Hall, 9.00am & 10.30am Donna 07516 726534

Wednesday

- Castle Brom** - Arden Hall, 9.30am Diane 07432 123206
- Castle Brom** - St Clements Church, 3.00, 4.30 & 6.00pm Nataley 07939 949136
- Marston Green** - The Parish Hall, 3.30, 5.30 & 7.00pm Jacqui 07814 675180
- Water Orton** - The Link, 5.30 & 7.00pm Jayne 07453 348184

Thursday

- Castle Vale** - St Cuthberts Church, 5.30pm, Richard 07733820994
- Chelmsley Wood** - The Fordbridge Centre (by Asda), 5.30pm, Jacquie 07957133435
- Sheldon** - St Thomas More, 4.00, 5.30, 7.00pm, Jayne 07453 348184
- Smiths Wood** - SJB Centre, 5.00 & 6.30pm Nataley 07939 949136 **NEW TIME 9am**

Friday

- Chelmsley Wood** - The Family Tree, 9.00am Jayne 07453 348184
- NEW CONSULTANT Sheldon** - St Thomas More Church, 9.00am Claire 07917867577

Saturday

- Chelmsley Wood** - Three Trees Community Centre, 9.00am Michael 07957 510533
- Chelmsley Wood** - The Family Tree, 8.30 & 10.00am Jayne 07453 348184
- Castle Brom** - The Baptist Church, 8.00 & 9.30am to Donna 07516726534
- Bordesley Green** - St Pauls Church, 9.00am Maria 07974 805252
- Sheldon** - St Thomas More, 7.30 & 9.00am Jacqui 07814 675180

We are recruiting - contact Toni for details 07971686698
slimmingworld.co.uk



KINGSBURY GARAGE DOORS

YOUR LOCAL GARAGE DOOR SPECIALIST

ALL TYPES OF GARAGE DOORS & FRONT DOORS



We are a family run business that carry out repairs and new installations

Great Choice • Great Quality • Great Service

CALL US ON: 01827 236090

email: info@kingsburygaragedoors.co.uk



Castle Bromwich Singers
present

It's Christmas

6th, 7th and 8th December 2023
19:30 until 22:00

and
Saturday 9th December 2023
17:00 until 19:30

Arden Hall, Water Orton Road
B36 9PB

Tickets available from
TicketSource



Greg on
07951 562 907
David on
07824 313538
and on the door

Net Profits to:



Price £10.00, (£5.00 under 16)

www.castlebromwichsingers.org.uk

www.facebook.com/cbsingers



Are you aged 11-18?
Do you live or go to school/college in
Warwickshire?
Then you can become a member of
the Warwickshire Youth Council!



Do you want to have your voice heard and help make
the lives of young people living in Warwickshire better?
Then let's make changes together!

We usually meet on the second Tuesday of
each month
online meetings 6pm – 7:30pm
face-to-face in-person meetings
6pm - 8pm

For more information

Email childfriendly@warwickshire.gov.uk

Call 07787 956966

or click the link and complete this form

forms.office.com/r/qNydBlyqrB



Major survey on police priorities and funding launches

Police and Crime Commissioner Philip Seccombe is asking people across Warwickshire about their priorities for policing for the year ahead and for their views on the Police Precept – the part of Council Tax which funds Warwickshire Police.



Philip Seccombe

The 'Your Police, Your Views' survey forms an important part of the budget setting process for policing for the next financial year. The responses gathered will help to inform how the budget is structured, to make sure Warwickshire Police continues to meet the needs of local people.

Just under half of the total budget for policing came through Council Tax in 2023/24, helping Warwickshire Police maintain its record number of 1,100 police officers, as well as funding a number of improvements to the service it delivers to the public, including:

- The introduction of a new policing model, featuring three geographical command centres in the North, South and East of the county, bringing together key areas of policing that are best delivered locally.
- New Patrol Investigations Teams with responsibility for investigating many of the crimes that do not meet the threshold for CID investigation but still negatively impact people's lives.
- Specialist teams to focus on high-risk crime such as domestic abuse, rape and serious sexual offences, human trafficking, online child sexual exploitation and digital media.
- Additional resources for call handing to improve the customer contact experience and reduce wait times.
- The provision of resolution centres where members of the public can speak face to face

with officers and staff, with longer opening times over 7 days each week at Nuneaton, Leamington, Rugby and Stratford.

In addition, Mr Seccombe has introduced three enhanced commissioned services helping victims of crime, including specialist support for those affected by sexual abuse and violence and child exploitation. A further three new commissioned services provide support for the victims of modern slavery and human trafficking and those affected by fatal and serious injury collisions on our roads, alongside an expanded restorative justice service.

Warwickshire Police and Crime Commissioner Philip Seccombe said: "The support of the public through the Police Precept has enabled these improvements to be delivered over the last year, allowing Warwickshire Police to maintain record police officer numbers and make the best use of its expanded workforce to improve services for the public and give greater support to victims of crime.

"I'm keen for Warwickshire Police to continue to improve the service it provides, while remaining focused on the things that matter most to local people. That's why I have launched the 'Your Police, Your Views' survey to get feedback on what people think policing should focus on and whether that has changed in the past year.

"The results will help me as I begin to develop a budget for policing for the year ahead. This involves a delicate balance of sometimes competing priorities, which is why people's views are so important. I know that pressures remain on everyone's finances, with inflation remaining high and other increases in the costs of goods and services meaning the money we have available may not stretch as far in the year ahead.

"That's why I need to get a clear idea of people's views on which priorities are most important to help establish what amount of funding may be needed, before balancing that against what is fair and affordable. Every response to the survey therefore matters and I am keen for as many people in Warwickshire as possible to give their feedback."

The 'Your Police, Your Views' survey will run through to Friday 22 December and can be found online at www.warwickshire-pcc.gov.uk/yourviews. Paper copies of the survey are also available on request by contacting the Commissioner's offices in Warwick on 01926 733523.

You can find more information on how Warwickshire Police is currently funded and how the Police Precept is used here: www.warwickshire-pcc.gov.uk/counciltax

Christmas Craft Fair

Over 30 stalls to visit including pet goodies, jewellery, wood carvings & more, with Christmas lunch in the Tea Rooms!



Pets are welcome

Live demonstrations

Visit the brand-new
craft centre

Whitacre Hall Farm, Nether Whitacre, B46 2PD
December 2nd-3rd 10:00-16:00

Coleshill Ladies Probus Meeting

We held our meeting on Tuesday 26th September at the Coleshill Hotel. After lunch, the speaker this month was Peter Bates Methodist Minister from Coleshill United Church, who gave a very entertaining and lively talk. Peter has been a Minister for 40 years and retired 9 years ago, but despite that has been minister at Coleshill United Church until its unfortunate closure. He met his wife Sue, in 1973 at the church youth club and they celebrated their golden anniversary this year. Peter was born in Wolverhampton (hence the ardent supporter of Wolves) and was previously a teacher in Dagenham, before he began his training in Bristol to become a Minister. Peter's first ministerial appointment was as an assistant minister in Harpenden, then he moved to Solihull in 1988. Peter also advised that many Methodist churches are closing, this is due to lack of attendance at the church and, fewer people are reluctant to commit to take on the roles that are required to allow the church to function i.e. treasurers, administrators etc. Coleshill United Church will be holding a closing service on 15th October at 4pm and everyone is welcome. This will be a celebration of the life of the church. Everyone thoroughly enjoyed the talk and asked several questions. We welcomed eight new guests today, Chris, Deanna, Eileen, Jenny, Judy, Margaret B, Margaret L, Maureen and Rose. We hope you all enjoyed the meeting and we look forward to welcoming you all as new members. **If you would like to know more about ladies probus or would like to join, please contact Dorcas on 01675 464686** We meet on the last Tuesday of every month at the Coleshill Hotel.

Harvest Celebrations

As part of our celebrations, we were delighted to invite parents, carers, and grandparents to our recent Harvest assemblies. The children performed songs and poems and the service was narrated by our Year 6 children. We were incredibly proud of our children who worked so hard to learn their parts and performed them so confidently. Our wonderful audiences play such an important part, we would like to thank everyone for making the celebrations so special for our children. Thanks must also go to our parents who so generously contributed fresh produce and food items. As is our custom, these have been distributed as a Harvest gift to the older member of our local community.



Some of the wonderful fresh produce that was donated and Mrs Tooley receiving her gift from school.

We are the Champions!



A team of boys and girls from Years 5 and 6 took part in the Atherstone and District Sports Association football tournament recently. Six local teams competed, hoping to win the Middleton Shield. Ava, Dylan and Joel from Year 6 and Casey, Joey, Joseph, Louis and Olivia from Year 5 showed wonderful sportsmanship and played together as a

team. They won 4 out of their 5 matches, resulting in the team being awarded the shield. Ava said, 'everyone tried their best, we had a great time.' Dylan added, 'we kept our heads up and worked together.' Mrs F commented, 'As a parent and staff member I am incredibly proud of the whole team. They encouraged each other and were a credit to our school.' Well done to everyone who took part.



Is your child due to start Reception Class in September 2024?

We welcome you to join us for a stimulating session of activities at our stay and play morning on Wednesday 22nd November, 9:00 – 10:15am.

At Shustoke Primary School, we begin with the child. We strongly believe that high levels of interest lead to high levels of attainment, and we encourage and support each individual through a stimulating and rich curriculum.

Our early curriculum has been thoughtfully planned to allow children to achieve and excel in all aspects of learning. We strive to provide learning experiences which allow our children to develop their curiosity, to ask questions, to explore, seek challenge and to engage in real-life, enjoyable experiences.

We work in partnership with our parents, governors, the church and the community in the life of the school, providing education within the context of the Christian belief and practice. Children in Reception Class enjoy welcoming their parents into school throughout the year for events such as Family Mornings, workshops and religious celebrations.

If you would like to join us for our stay and play session, please contact the School Office Manger:
Tel: 01675 481319 email: admin3207@welearn365.com
We look forward to meeting you.

UK BREAKS

By Coach from Solihull

WINCHESTER

Christmas Market & Windsor



Departing Fri 15 Dec '23

Join us on this getaway to delight in Winchester's merry atmosphere where we get our Christmas shopping started early at the annual Christmas market. We also enjoy a visit to the historical city of Windsor to soak up the spirit of the Christmas season.

- Your break includes**
- Return coach travel from Solihull
 - 2 nights at the 3-star Basingstoke Country Hotel & Spa with dinner & breakfast
 - Excursion to Salisbury & Winchester Christmas Market
 - En-route visit to Windsor

3 Days by Coach only **£179**
Single Supplement £50

YORK ST NICHOLAS FAYRE

& Leeds Christmas Shopper



Departing Sat 16 Dec '23

York's St Nicholas Fayre is the ultimate Christmas experience with over 100 traditional chalet stalls selling gift ideas, from local produce to traditional crafts. We also visit Leeds, a Christmas shopping haven with twinkling fairy lights and seasonal cheer.

- Your break includes**
- Return coach travel from Solihull
 - Overnight stay at a selected 3 or 4-star hotel with breakfast
 - Visits to York St Nicholas Fayre & Leeds

2 Days by Coach only **£119**
Single Supplement £35

ANDRÉ RIEU

Live in Birmingham



Departing Fri 17 May '24

The classical-music phenomenon André Rieu returns to the UK with a sensational new show, including a date at Birmingham's Resorts World Arena! Accompanied by his 60-piece Johann Strauss Orchestra, this evening promises to be filled with thrilling music.

- Your break includes**
- Return coach travel from Solihull & Sutton Coldfield
 - Overnight stay at a selected hotel (JG3 or JG4 rating) with breakfast
 - Ticket to André Rieu concert at the Resorts World Arena, Birmingham
 - Return coach transfers from the hotel to the Resorts World Arena
 - En-route visit to a place of interest
- Ticket upgrades available**

2 Days by Coach only **£219**
Single Supplement £35

JustGo! Holidays

Reader travel

CHRISTMAS

in Bournemouth



Departing Sat 23 Dec '23

Celebrate Christmas in the traditional seaside resort of Bournemouth, featuring a lovely lunch with all the trimmings! We also enjoy included excursions, with Christmas Eve spent amid the magical landscapes of the New Forest and a Boxing Day trip to Salisbury.

- Your break includes**
- Return coach travel from Solihull
 - 4 nights at a selected 3 or 4-star hotel in Bournemouth with dinner & breakfast. Christmas Day includes breakfast, a traditional Christmas lunch and a light evening buffet
 - Welcome drink
 - After-dinner tea & coffee
 - Light entertainment every evening
 - Excursions to the New Forest (Lyminster & Lyndhurst) & Salisbury

5 Days by Coach only **£369**

Single Supplement £100

SCARBOROUGH

Twixmas Special



Departing Thu 28 Dec '23

Make the most of the festive season with this fantastic Twixmas break to Scarborough! With a visit to York included, there's plenty of time to shop and see the famous historic architecture and cobbled streets dotted with quirky shops and quaint tea rooms.

- Your break includes**
- Return coach travel from Solihull
 - 2 nights at the 3-star Grand Hotel, Scarborough with dinner & breakfast
 - 2 for 1 bar (6pm-9pm) on selected drinks
 - Light entertainment every evening
 - Excursion to York
 - Free time in Scarborough

3 Days by Coach only **£159**

Single Supplement £50
Operated by Just Go Holidays Ltd. Coach package holidays and short breaks are subject to Just Go! Holidays terms and conditions. Your booking is protected by Bonded Coach Holidays (BCH) and the Association of Bonded Travel Organisers Trust Limited (ABTOT); this is a government approved consumer protection scheme. Tours offered subject to availability and government guidelines. Errors and omissions excepted. Prices per person, based on two people sharing a double/twin room. Calls to 033 numbers are free within inclusive minutes packages otherwise standard rates apply. Prices are correct at the time of printing and will be honoured for bookings made on or before 7 days after publication.

COLESHILL CIVIC SOCIETY

Missing Buildings and Spaces 7

By John Hoyle



Here is a view of the Coleshill high Street which is now unrecognizable. The only building remaining is Queen Anne House which is currently being converted into flats. The far side of Queen Anne House is now a collection of empty offices other than Coventry BS. On the left, from the gate posts with the pineapples on top is the post office building with their parking behind and Indian Lounge. Incidentally Queen Anne House was once the surgery of Dr Cant whose brother was a professor at the QE and in those days called Waltham House.



Many will recognize this building as Dr Walls Barn. The tall building at the end of the row was The Woodman Inn, many Coleshill folk still call the junction Woodman Corner. When this photo was taken the Woodman Inn had closed and the part with the blind was a small general store. Dr. Wall owned a large area of land and used the barn for his horses. The barn and the whole corner was demolished in 1963 and replaced by the current shops and seating area.



This is a very well known view from the top of the Church Tower. Probably taken in the 1950's. On the right a barn known as the Tithe Barn, this barn was in fact owned by Fred Pinney, he was local agent for the Digby's, so not, at that time a true Tithe Barn. and opposite a smaller barn which was in the grounds of Old Bank House. The whole area was redeveloped in the late 1950's. On the left down to Blythe Road by houses ending with a small factory at the road side the right hand side, after the barn was demolished with 2 private houses.



Behind the Old Market Hall on Church Hill there is currently a car park. This area was originally known as Mount Pleasant. In the late 40's there stood this house which was home to Frank Childs who ran Child's Fish and Chip shop on the High Street just up from the cross roads. It was demolished in part of the redevelopment work undertaken by MRDC in the late 1960's

All the articles I have written for the Post have been taken from the Civic Society archives. The items in the Archives are currently catalogued and held in an Access database. However since covid little work has taken place and they need a good 'spring-clean'. If anyone out there would like to become involved with this work please contact me. A note through the letter box of the Old Market Hall on Church Hill would be great.

If anyone has any corrections or suggestions about future articles please contact me through the Coleshill Post Editor or Colin Lewis at House and Home on the High Street.



Cllr Steve Stuart, Water Orton North Warwickshire Borough Council

Dear Fellow Villagers

The reports of the cancellation of the northern sections of HS2 were met with a lot of different reactions. There were a cluster of emails that were seemingly sent as soon as the announcement was made as to when the village would be back to normal.

I am not one to over promise and under deliver. Much of the work that is being carried out presently will be continuing as before. There is no doubt that the situation will change; but those changes will mean that our need to ensure that the responsibilities of all involved in the construction towards those who are resident continue to be met in the best way possible.

The day after the Prime Ministers announcement I was meeting with BBV with the knowledge of HS2 with a view to identifying areas in the village that could host or benefit from a legacy project that can help addressing some of the areas where we are deficient and improving our area for everyone, for ever. The need to press through access to gain funding to for deliverable and sustainable benefits is more pressing now as there is a risk that obligations to social value may be a casualty of the decision to cancel the extended programme. This isn't the time for unfunded pipe dreams and vanity projects.

In the run up to the election in May I launched a village survey and asked villagers what they wanted my priorities to be. One which came up regularly was an improved rail service. Meeting with Network Rail last week they detailed that the cancellation of HS2s northern extensions could see an increase in rail links between the West and East Midlands. Services between Birmingham and Nottingham and Leicester could be more in focus with the potential to serve our station in a more regular way.

This is not likely to be visible until 2025 at the earliest. However, those present were receptive to my suggestions of opening up an occasional evening and Sunday service to and from New Street. I'd been made aware of the previous unsuccessful and abortive efforts of others to increase services which had focussed just on the running of trains. However, I found that the appeal of improving community cohesion through improved access to services got an interested response.

There is a possibility of providing a shared experience through the running of an occasional / weekly train service which enables a trip to all that Birmingham has to offer. A family trip to a show or panto, a couple sharing a

meal or a village outing to the Christmas Markets could be accessible by train and be the basis of a future increased offering should we be able to show the demand is there. I'll keep you informed of progress.

Since my last column there was an eventful meeting of full council in Atherstone. The meeting was adjourned as environmental protesters sought to make themselves heard. I was happy to listen to what they had to say, after all if groups do not feel engaged then they may resort to even more disruptive tactics. To presume that, as elected individuals, we know every issue of concern is the height of arrogance. This is why I will seek to always engage and ask your viewpoints rather than telling you what you should be concerned about.

The meeting also saw a proposal that each ward would be granted a fund of £5000 to help provide local support activities as winter sets in and provides extra challenges. I can see the potential for some really quite special activities here which again will promote community cohesion, reduce isolation and all of the benefits that can come from this.

Despite some significant opposition the proposal passed by a single vote. I always feel it is important that you know exactly how those who are privileged to represent you act and vote on issues. This is why I publish my voting record on my website at www.waterortonsteve.co.uk. However on this matter I requested and was supported in my request to have a "recorded vote" where it is minuted how each councillor voted on the matter concerned. You can have look for yourself when the draft minutes are published.

You will see that the votes went alongside party lines. I don't believe in party politics at a local level and you can be assured that I, as an independent, will always vote in the way I feel is in the best interest of those that I represent in Water Orton and North Warwickshire as a whole. In this instance it was the votes of the independents which were instrumental in the passing of the motion.

Finally this month I have to pass on my thanks to the wonderful committee members and volunteers at the village library who have graciously allowed me to start to offer surgeries on alternate Saturdays between 10.30 - 11.30. My usual Tuesday sessions at the Robert Lloyd Room (10-11) will continue as normal.

Hope to see you in and around the village!!



Closure of B4114 Birmingham Road, Coleshill

The work we will be completing

We are continuing to prepare for works to construct the Coleshill Viaducts, that will carry the HS2 railway over the existing B4114 Birmingham Road. As part of this work in the area, we will complete utility diversions on B4114 Birmingham Road. In order to complete this work safely, we will install a four-week closure of B4114 Birmingham Road from Monday 30 October until Friday 24 November. A diversion route will be in place and access for pedestrians, residents and businesses will be maintained throughout the closure.



Local HS2 and BBV drop in

At this event you can find out more about HS2, what it means for the local area and have your questions answered by the HS2 and BBV team.

You do not need to sign up to attend this event.

- Water Orton Methodist Church: Birmingham Road, Water Orton, B46 1TL
Wednesday 22 November 2023, 4pm - 6pm

Community Projects

BBV and our supply chain partners can give back through volunteering time, providing resources and capacity, through the transfer of knowledge and skills.

If you have any projects you think we could support with please contact communityinvestment@balfourbeattyvinci.com



Independent Family Funeral Directors

Offering a complete, dignified and caring service to the community for four generations.

01675 462294

24 hour service | Private Chapels of Rest
coleshill@gascoignesfunerals.com

100 High Street, Coleshill B46 3BL
www.gascoignesfunerals.com

Prepayment Plans Available

Proud member of the MCG Exams Family

AmbaCare Solutions

Dementia Day Centre

Wednesdays 10.30 a.m. to 3.30 p.m

£25.00 per day

Venue:
The Terrace
St Joseph's Care Home
Gerard's Way
Coleshill B46 3FG

Varied programme of meaningful activities
2 course Lunch, snacks & drinks provided

If you are interested in securing a place call
Ruth Chauhan on 07974 727223
or email ruth@amba-uk.org



Central Group
Dignity, Respect & Kindness in everything we do



A safe, friendly, fun place where you can leave your loved one in the care of AmbaCare's experienced Staff & Volunteers



Cllr Dave Reilly. Water Orton Ward. North Warwickshire Borough Council.

HS2 update – is it cancelled or not?

This month's article is dedicated to HS2 and attempt to explain what is happening locally after the Prime Minister's cancellation announcement at the beginning of the month. I choose the word 'attempt' intentionally!

What Did The Prime Minister Say?

From our local North Warwickshire perspective, the key statements were:

1. Phase 2 of High Speed 2 (HS2), Birmingham to Manchester, will not go ahead.
2. The first part of HS2 between Birmingham and west London will be completed.
3. The Birmingham to London HS2 line will run all the way to Euston station, not Old Oak Common in west London as had been planned, and that work at Euston will no longer be overseen by HS2 Ltd.
4. A commitment was made to road upgrades locally on the A5 and M6, and road resurfacing around the country.
5. A Midlands Rail Hub connecting 50 stations will be delivered, together with extensions to the Birmingham Tram network.
6. The £2 bus fare will continue until the end of December 2024.

What Does this Mean For Us?

Well, this is where we need clarity to fully understand what it means for North Warwickshire. I'll try and explain each of the six pledges:

1. **Phase 2 of High Speed 2 (HS2), Birmingham to Manchester, will not go ahead.**

This is the least clear of the statements, sorry about this. Having asked for clarification I have been told that HS2 are in discussion with National Government.

What is clear is that proposed HS2 works from Lichfield to Manchester will be cancelled. What is not clear is what it means for the High Speed route in North Warwickshire up to Lichfield.

Lichfield is important because the proposed HS2 route crosses the current West Coast Mainline train track at a village called Handsacre, just north of Lichfield and close to Rugely. The West Coast mainline already travels north to Manchester and north to Scotland, so there is a view that the new HS2 line could connect with the existing West Coast mainline at Handsacre if a series of new built points were built, and HS2 trains would travel north to Manchester and Scotland on existing train lines, but not at high speed.

Now the Prime Minister said that the route from 'Birmingham to Manchester' will not go ahead, and this is where the current confusion lies. In real terms, does this mean from Handsacre to Manchester, or does it mean from Birmingham? If it is from Birmingham then that means that all of the current works taking the HS2 line across the M42 at Coleshill, through Gilson, past Curdworth and up to Middleton will not be used, as notionally they won't connect with anywhere. The line will just come to an end and the buffers!! This also means that the HS2 works along Vicarage Lane and over the M42 and A446 at Water Orton will not be used either.

If this is the case, then there is a huge question about the need to stop all works immediately, and this will include all works at Gilson as also at Watton Lane where the piers that will carry the line over the elevated M42 are now being built as I type. I am actively seeking clarification.

The Pause. You will recall that all works north of Curdworth are currently 'Paused' for two years, with the exception of building works to complete three half constructed bridges and make them safe.

I have been told that the 'Pause' is still active. So there will be no construction works on the line north of Faraday Avenue.

Taking it that this is correct, then the two year 'Pause' continued to be interesting. There will be a General Election before the 'Pause' ends and the question has to be, will a new Government commit to HS2 as one of their key early policy statements? Who knows!

So, in summary, it is not clear what the Prime Ministers announcement means for all works through Gilson, Bodymoor Heath, Middleton, and north to Lichfield or along Vicarage Lane and Watton Lane, Water Orton.

2. **The works to build HS2 between Birmingham and west London will be completed.**

This is clear. Construction works from Birmingham City Centre, through the Tunnel at Water Orton, over the M6/M42 link, past Coleshill Hall, and on to the old Melbecks site and the new Interchange Station near to the NEC will continue to completion in 10 years' time when the first train is expected to run.

This means all of the earth works at Coleshill and the River Cole and M6 crossings will be constructed. You may recall the earth works will be built using the 3 million tonnes of spoil that will be excavated from the Water Orton Tunnel and moved to Coleshill by HGV along the M42 and A446.

3. **The Birmingham to London HS2 line will run all the way to Euston station, not Old Oak Common in west London as had been planned, and that work at Euston will no longer be overseen by HS2 Ltd.**

Accepting that we're talking 10 year's time for the first train, the trains will now run in to Euston and not stop at Old Oak Common and 6 miles outside London as was the plan prior to the Prime Minister's statement. The decision to take the project off HS2 means that the new station will be built and paid for by private sector funding, probably raised by allowing housing to be built at the new Euston station site too.

4. A commitment was made to road upgrades locally on the A5 and M6, and road resurfacing around the country.
5. This is critically important for North Warwickshire. Our Local Plan allocated land to build over 6,000 new homes at five sites along the A5. Without this committed investment in the A5 it would have been hugely challenging to build this volume of housing, which would have meant that a proportion of the housing would have had to be relocated to areas with our community and probably on Green Belt sites. Thankfully that risk has been mitigated with the commitment to fund improvements on the A5.

6. **A Midlands Rail Hub connecting 50 stations will be delivered, together with extensions to the Birmingham Tram network.**

It has been confirmed that Coleshill Parkway and Water Orton Stations are amongst the 50 Midlands Rail Hub stations. The Midlands Rail Hub is focussed on delivering more trains and better connections on the existing train timetables.

This is great news, especially for our campaign to prevent the demolition of Water Orton Train Station. There is a lot more work to be done, but this is a huge boost.

The extensions to the Birmingham Tram network will more than likely be into the Black Country, but plans continue to be considered about extending the tram network into Castle Bromwich, which will possibly help those who commute to Birmingham ... and socialise in the City too!

7. **The £2 bus fare will continue until the end of December 2024.**

Finally, the retention of the £2 fare is good news. The planned increase to £2:50 has been shelved until 2024. This is great news both for commuters and families struggling with Cost of Living increases, as well and continue to offering Green Transport choices besides driving.

In Summary.

So, I have 'attempted' to put detail to what the announcement means. However, we need a Government position statement to be clear about what will or will not happen.

In real terms I very much suspect that our communities of Water Orton, Coleshill, and Curdworth will not see any meaningful changes, other than a further delay to all of the HS2 construction works that have been started on the line to Lichfield. These works are already 'Paused' until a new Government decides what to do with HS2 and this means that all the current site works and compounds will be secured, and all works besides basic maintenance and site security will stop. This is an unsatisfactory position, all it does is extend the paid.

I do think that any talk of HS2 joining the West Coast Mainline at Handsacre is interesting. If this is to be the case, then HS2 will need to start compulsory purchase arrangements for existing land and properties that they do not already own so that they can build the points junction that will join the lines at this location. This will be a massive junction, something the size of the Delta junction at Water Orton. A well-run compulsory purchase operation will take a minimum of two years, and we are talking about a section of the HS2 line for which all works are already 'Paused' for two years. The situation is anything but clear!

I will continue to campaign for a clear position and for the best mitigation or hopefully restoration for our community. I will update you as soon as I am able.

As ever, If I can be of any help my email address is davidreilly@northwarks.gov.uk and my phone number is 07770 704 617. With kindest regards, Dave.

Police News



All your latest news and information from the Warwickshire Police Local Policing Team for North Warwickshire South (Coleshill) and West (Water Orton/Curdworth)



Follow us on Facebook, search for: Atherstone & Coleshill Safer Neighbourhood Team or scan the QR code here.



Burglary Dwellings

There has been an increase in Burglaries in the Water Orton and Curdworth area over the last month.

Officers from Coleshill West SNT have been conducting targeted patrols in the villages over the last month following an increase in burglaries.

PCSO Smith and Beale also held a crime prevention event at St Peters and St Pauls church on Saturday 14th October. Thank you to the residents that attended. Free alarms were handed out and advice on how to protect your home.

Patrols and police action have increased but please ensure appropriate steps are being taken to secure your property and report any suspicious incidents/persons as soon as possible.

Offences include properties being entered via the rear doors and damaging glass/doors.

Follow this link for advice on how to secure your property: [Crime prevention advice | Warwickshire Police](#)

Coleshill High Street crossroads

Police officers in high visibility uniform have been monitoring traffic at the crossing of Blythe Road and High Street in Coleshill.

Traffic lights are now in place with no right turn signs in view.

On Wednesday 18th October, 22 people have turned right in front of Police and will be dealt with accordingly.

Can this be a kind reminder that there is no right turn in any direction of this crossing.



Further patrols will be conducted in the area and anyone breaking the no right turn rule will be dealt with.

2 people were also observed to be using their phone whilst driving! They will also be receiving a visit from officers.

Tell us what you think!

Atherstone and Coleshill SNT are community-based officers. We want to know what our communities would like to see us prioritising.

If you would like to raise a priority with us, click on the link and fill out the form:

<https://forms.office.com/Pages/DesignPageV2.aspx..>

or scan the QR code and fill in the boxes for it to be considered.

Atherstone and Coleshill Safer Neighbourhood Team Newsletter Proposal of Area Priorities



ADVERTISE YOUR BUSINESS WITH US

For prices, media pack and more information
 Call 0121 749 7502 / 07805 430191
 or email: serena.postgroup@outlook.com





Cllr. Alistair Brett, Coleshill Town Councillor
Cllr. Jane Farrow, Borough Councillor, Coleshill North ward
Keeping Coleshill Parkway ticket office open is still “on track”

You may remember in the last issue we outlined the egregious proposals by rail operators to close almost all ticket offices in England. We also highlighted the disproportionately negative impact on disabled rail users in particular. So we urged readers of the Coleshill Post and the wider community to petition Parliament in an attempt to force a debate in the House of Commons which could lead to the repeal of this discriminatory proposal. It is therefore with some cheer that we can report that the issue has galvanised people all around the country to do just that and none more so than the residents of our particular patch of North Warwickshire. On Wednesday 13th September there were two items of Parliamentary business to do with railway ticket office closure in the House of Commons:

- A Westminster Hall debate led by Chris Loder MP
- An evidence session held by the Transport Select Committee.

Whilst we don't want to give readers a lesson on the British Constitution – this column or indeed life in general is too short for that - it's worth pointing out what this means. Westminster Hall is the second chamber of the House of Commons and debates here give MPs an opportunity to raise local or national issues and receive a response from a government minister. However, Westminster Hall debates don't end in a vote on a particular action or decision but are a first step to getting issues of intense public interest through to a full Commons debate. There was then an evidence session called by a group of MPs to invite experts and people with experience of the issue to answer MPs questions and help the committee understand more about the technicalities involved. All this gives traction to getting this to a full vote by Parliament in the near future and hopefully scrapping the whole sorry idea. We would like to take the opportunity to thank all residents of Coleshill and the surrounding areas who contacted us or who signed the petition directly, for engaging in the democratic process. Faith in our political system is at a low ebb at the moment but what this small victory does show is that when ordinary members of the public are informed and engaged they can begin to effect change. We will of course keep you informed of progress.

Be scam aware!

Politics aside, Autumn is now well upon us and many residents will be turning the heating on with some trepidation as to the cost and so, homeowners will be looking at ways of improving the energy efficiency of their homes. However, as sure as Winter will follow Autumn, unscrupulous loft insulation scammers come out of the woodwork at this time of year to try to take advantage of these concerns. As your local Councillors, we have had a number of reports from distressed residents regarding telephone cold calls from companies offering surveys for loft insulation and attempting to pressurise vulnerable residents into buying overpriced and unsuitable insulation products. Unfortunately, these calls are not illegal as they are technically not selling but offering free “advice”.

The script goes something like this. They will call you saying that they have a record that your loft insulation is not up to modern specification and that it may even be illegal or be causing damp issues – this is utter nonsense, they don't have records, they can't use X-Ray vision to see inside your roof-space and there's nothing illegal about having inadequate roof insulation. They will also attempt to find out your age because they cynically believe elderly people on their own are easier targets to rip off. The scammer may even claim they are government or council backed – again not true. Having sown the seeds of doubt and begun to get you worried, they will then offer a free survey to inspect your insulation and offer “advice” on how to upgrade it – they will say that they have a surveyor in the area who can call round to your house today or tomorrow – suspiciously quickly. It is at this point you should tell them firmly that you are not interested. Put the phone down if you have to – older people are often far too polite and trusting, these unscrupulous sales people have no qualms about abusing people's good nature to get what they want – your money!

If they do get inside your house - but please don't allow the scam to get to this stage if you can possibly avoid it! - as sure as eggs is eggs they will find your insulation is inadequate and offer a solution – drum roll please - spray foam insulation! Usually at a cost of around £4,500, about five times the actual value of the procedure. Spray foam insulation is generally not suitable for the majority of homes and may even render it unsellable unless removed, so avoid it like the plague. Door to door cold calling is much less common as it seems the loft insulation scammers are generally too lazy to walk the streets of Coleshill but that's not to say it won't happen – the drive tarmacers seems to favour that particular method. Here is our advice for dealing with rogue sales people who are using either phone calls or door knocking.

What can I do to avoid being scammed?

- Only let someone in if you're expecting them or they're a trusted friend, family member or professional. Don't feel embarrassed about turning someone away.
- Don't feel pressured to make decisions on the spot. It's always best to talk things through with someone you trust before signing any agreements. Ask the visitor to leave some written or printed information for you to consider. Don't give away your telephone number, instead say you'd prefer to take theirs. This way you retain the power to follow up on the opportunity without risking pushy follow-up calls.
- If someone calls you on the phone to sell you something (known as cold calling), you always have the right to hang up. If they talk over you or make you feel intimidated, don't be afraid to end the call. It's easy to feel rude for hanging up on someone, but remember they don't have the right to make you feel uncomfortable in the first place.
- Register with the Telephone Preference Service – it's free and it allows you to opt out of any unsolicited live telesales calls. This will reduce the number of cold calls you receive, but may not block determined scammers.
- Talk to your phone provider to see what other privacy services and call-blocking services* are available, although you may need to pay for some of these services.

Apologies if you've heard all this before but if it saves just one of our residents from being scammed out of a lot of money then it's worth repeating and repeating often.

If you do want good, trusted advice on keeping warm this winter then Warwickshire County Council have contracted the “Act on Energy” charity to run a scheme called “Warm and Well” who will be able to assist those eligible in accessing support and advice on reducing energy bills as well as referrals for free or discounted energy saving measures, including insulation. They can be contacted on 0800 988 2881.

If you want to save money on heating but also enjoy a bit of social interaction then the Warm Hub in Coleshill Town Hall (Tuesday, Wednesday and Thursday 10.00am to 1.30 pm) and the one at Old Salts Rugby club, Water Orton (Thursdays 10.30am to 3.00pm) are well worth a visit. Full details can be obtained from the lovely people at Coleshill Hub on 01675 462517.

Contacts:
 alistairbrett@coleshilltowncouncil.gov.uk
 janefarrow@northwarks.gov.uk

**NETHER WHITACRE
 METHODIST CHURCH**

**BUSINESS PREMISES AVAILABLE
 FOR HIRE**

APPROX. 8.4 SQUARE METRES
 AVAILABLE, WITH USE OF KITCHEN AND
 TOILET FACILITIES

CAR PARKING PROVIDED

ACCESS/HIRE OF ANOTHER ROOM
 CAN ALSO BE NEGOTIATED, IF REQUIRED

IDEAL FOR BUSINESS VENTURES SUCH AS OFFICE
 WORK AND CONSULTANCY, OR A CLUB OR GROUP

FOR FURTHER INFORMATION, CALL:
07863399536

OR: APPLY VIA THE WEBSITE:
www.whitacre.co.uk

Coleshill Town Council presents

**Annual Charity Christmas
 Fair 2023**

Saturday 2nd December
12 noon to 4 pm
 Free Entry

Come to the **Coleshill Town Hall**
 and meet Santa Claus (for FREE)
 in his fancy Grotto!

Enjoy the festive entertainment,
 local choirs, local bands etc. **PLUS**
 lots of exciting seasonal stalls,
 with a mixed variety of goodies,
 gifts, foods
 and fancies!

Refreshments available
FREE parking opposite

SHARE A STORY

contact:
serena.postgroup@outlook.com



Flaxley Tyres

OPEN 6 DAYS A WEEK

0121 789 6549

**FAST, RELIABLE, PROFESSIONAL
 SERVICE WITH NO HIDDEN EXTRAS**

- 2000+ TYRES IN STOCK
- BRAKES SUPPLY + FIT (CAR & VAN)
- HUNTER 4 WHEEL ALIGNMENT
- EST OVER 18 YEARS
- PUNCTURE REPAIRS

Flaxley Tyres
 FOR ALL YOUR TYRE NEEDS

Flaxley Alignment Centre
 WE OFFER A FREE CHECK ON
 THE HUNTER ALIGNMENT SYSTEM

NEXEN **brembo**

flaxleytyres 

www.flaxleytyres.co.uk

Unit 1, Imex Business Park, Flaxley Road, Stechford B33 9AL



**COLESHILL TOWN COUNCIL
CHARITY CHRISTMAS FAIR**
Sat 2th Dec 12 Noon to 4pm
All welcome, meet Santa,
festive entertainment plus
seasonal stalls. Free parking at
Chantry House.



**Next Town Council
Meeting – 8th Nov**
Community Centre,
Temple Way

Sumner Road, Coleshill
Tel. 01675 462517
Opening Hours. Mon to Fri 10:00 to
13:00
www.coleshillhub.co.uk

WARM HUB
Town Hall Tue to
Thu 10 to 1 and
Community Centre
(Tue only). Come in
for a chat and
activities if you
wish.
Free refreshments.

INFORMATION
Help and support for any enquiries or
issues such as:-
Blue Badges, Driving Licence, Passport
Applications, Online Benefit Forms and
much more

Signposting to many groups, partner
services and agencies – see some examples
in boxes below

GROUPS
Parkinson's Cafe
Memory Cafes
**(Coleshill/
Water Orton)**
Young at Heart
Stitch Club

SIGNPOSTING
Carers Trust
CAB (Citizens
Advice Bureau)
MIND
Vision Support
Wellbeing

GROUPS
Walking Tours
Keep Fit & Natter
Walking Sports
Art & Crafts
Knit & Natter

What a wonderful group of women!



At the end of September, these amazing ladies celebrated 40 years of their Over 60's Keep Fit groups!

This group was originally started by Dr. Jack Stuart in 1983, and the group met at the Coleshill Clinic in Parkfield Road, Dr. Stuart set it up as a Health Club to keep retired residents active and fit.

Due to unforeseen circumstances the group stopped for a while and when members were keen to start again, they had challenges finding a room big enough for them all. So, one group became two, with half the keep-fitters in the Town Hall and the other half, moved into the United Church on Coventry Road.

Then 2020 arrived, bringing us the challenges of Covid 19 and lockdown, so everything ceased. Post-Covid both groups ended up running their sessions in the Town Hall again but on different days, as these groups had now developed their own

personality and routines, and today these are both still going strong!

The current 'Over 50's Keep Fit Group' meet in the Town Hall on a Wednesday morning, led by Dot and Nadine and the 'Keep Fit & Natter Group' meet in the Town Hall on Monday mornings led by Ida and Chris.

The Coleshill Town Council secured some funding from 'Think Active' under the scheme of 'Tackling Inequalities Grants' in November 2020, to purchase the television with integral DVD Player which is mounted on the wall in the Old Court Room. The ladies no longer use their cassette tapes, nor the portable DVD player – that came next – but they love the TV as they can all easily see it and follow the instructions.

If you don't use it, you lose it! So, the saying goes, and all these incredible women have been using these groups to keep fit, keep active and keep well. Well done to them all!



R.I.P. Rita Price



Phil, Chris and Cathy would like to thank everyone that attended Rita's funeral and wake on 02nd October 2023. Thank you also to those who contributed to her chosen charity, Midland Air Ambulance, and for the many cards and messages of condolence that were received.

Rita was a much loved and valued member of her family, her community and her Church (she was a steward at Sacred Heart and St Teresa) She will be very much missed by everyone who knew her.

R.I.P. mum xx

MACMILLIAN COFFEE MORNING 2023



On Friday 29th September, it was the annual Macmillan Coffee Morning, this is a great opportunity to bring people together to have fun, chat, eat cake and coffee, and raise some money to help people with cancer. This disease touches everyone's life nowadays, be it a family member, a friend, a work colleague or a neighbour. We all seem to know someone who is challenged with this cruel, complex illness.

Luckily, at Coleshill Town Hall on 29th September, it was delightful to attend the fun-packed, cake filled Old Court Room and to come together with lots of people from Coleshill and the surrounding area, to raise money to help others.

The Coleshill Community Hub Annual Macmillan Coffee Morning is always organized and led by the lovely Hub Volunteer Joan. She is amazing, and in her previous home in Tewkesbury she annually raised money for Macmillan, so when she moved near Coleshill 5 years ago and started to volunteer at the Hub, she asked if she could do these coffee mornings. What a huge success these have been, all led by Joan, with lots of help from her fellow Hub volunteers. Each year they have raised more and more money for charity, this year we are proud to announce that the sum obtained, is a staggering £1116.00 for Macmillan!!! FABULOUS



What a huge achievement, the event was packed as lots of people had contributed, made and delivered cakes, donated raffle prizes, helped set up, manned stalls, given monetary donations etc.

We were delighted to also receive the added support of a group of Coleshill School Sixth Formers, who were accompanied by the sixth form administrator, the lovely Charlie Painter (previously our amazing Hub coordinator for 2 years). These pupils did a sterling job, serving cakes, waiting on tables, helping on stalls and doing ALL the washing up.

Go and see the wonderful sixth form students, who will be helping out again, at the Sixth Form Open Evening on Thursday 23rd November at the Coleshill School, between 6.00 – 8.00 pm

What a super opportunity it was to bring the Town Council and Hub, the Coleshill School and the Community together. It really is astonishing what can be achieved working together in collaboration. Isn't this what community is all about?

This group event proves how beneficial it is to come together for the greater good. To prove this, just look at the total raised, we have never exceeded £1000 - but this year, with ALL your tremendous help, donations, support and input we smashed the £1000 barrier and everyone had a super day, all to benefit and help others.

So, so many thanks you, but we'll try (fingers crossed and name you all – if possible). Here goes:

As a Coleshill resident, be proud, YOU are amazing!

Castle Bromwich Singers
present

Carols by Candlelight

Tuesday 12th December 2023
19:30 until 22:00

Castle Bromwich Baptist Church
Timberley Lane
B34 7HU

Tickets available from
TicketSource



Greg on
07951 562 907
David on
07824 313538
and on the door



Price **£6.00** (£4.00 under 16)

www.castlebromwichsingers.org.uk

www.facebook.com/cbsingers

Happy World Diabetes Day and Diabetes awareness Month!



Tuesday 14th November marks World Diabetes Day and November is Diabetes awareness month. Diabetes is said to be a modern epidemic affecting many who don't even realise it. As Podiatrists, we focus on the effects that diabetes can have on the foot. There are many tips and advice we can give to help you look after your feet and prevent any problems. Additionally, we annually complete a diabetic screening to monitor any changes that may occur and report this directly to your GP.

If you would like to book in to see one of our HCPC registered Podiatrists you can do so by either calling 0121 749 6313 or visiting our clinic located at 329 Chester Road, Castle Bromwich, Birmingham, B36 0JG. If you would like to book an appointment with us online, you can do so by visiting www.walshpodiatry.co.uk

We have prepared a presentation if you would like to learn more about how Diabetes affects your feet, how you can look after your feet as a Diabetic and why Podiatry is important when you have Diabetes.



Customer Review ★★★★★

Visited yesterday with my son, could not fault the service from booking to the appointment. Friendly and helpful staff. The lady we saw was really knowledgeable and helpful and gave us options. Definitely, going to book the next appointment in. There was no pressure and it was really relaxed.

Rachel Speers



WALSH
PODIATRY

hpcp registered
www.hpcp.co.uk

Make sure your feet are in safe hands
Always use a HCPC Registered Podiatrist



tel. 0121 749 6313
www.walshpodiatry.co.uk

Our highly skilled Podiatry led team can put you at ease and provide specialist treatment to help your feet look and feel wonderful again
329 Chester Road, Castle Bromwich, Birmingham, B36 0JG

Coleshill Drama Group

Are you interested in Coleshill's future?

Coleshill Drama Group most certainly is. Have you heard of the plans to redevelop The Croft? Do you think we should have a gastro pub and gift shop in a designated green wildlife area beside HS2?

Coleshillian Peter Saunders, now CEO of seven major companies in Europe and owner of a major food chain and well known delivery service, has decided to return to the town of his birth to lay out his plans for its redevelopment.

If you want to be one of those who want to know more, then be sure to get your tickets for Coleshill Drama Group's "Killers on the Croft", Coleshill's own murder mystery written by Jon Pegg, set in the High Street and environs.

Tickets, £12 full price, £10 concessions (retired persons or those in full time education) are now available from Coleshill Library, Gascoignes of Coleshill Ltd and Cafe on the Hill. They can also be purchased online at coleshilldrama.co.uk. or telephone Sue Wallace on 01675 462674.

Car parking will be available at Chantry House opposite Coleshill Town Hall, where the performance commences each night Thursday 9th, Friday 10th and Saturday 11th November at 7.30pm. Doors open at 7pm when the licensed bar, selling Church End beers, is open and drinks can be taken to your table.

This is the first time that Coleshill Drama Group has had a play written specifically for the Group about the Town in which it has performed for 90 years. Make sure you don't miss out on hearing proposals for your Town. In fact, should you wish to come each of the three nights, you will see a different outcome and ending. You will be surprised!"



Kavanagh's Kitchens and Bathrooms
32 East Meadway, Tile Cross, Birmingham B33 0AP
Tel. No.: 0121 604 6464 Fax No.: 0121 784 8584
www.kavsbathrooms.co.uk



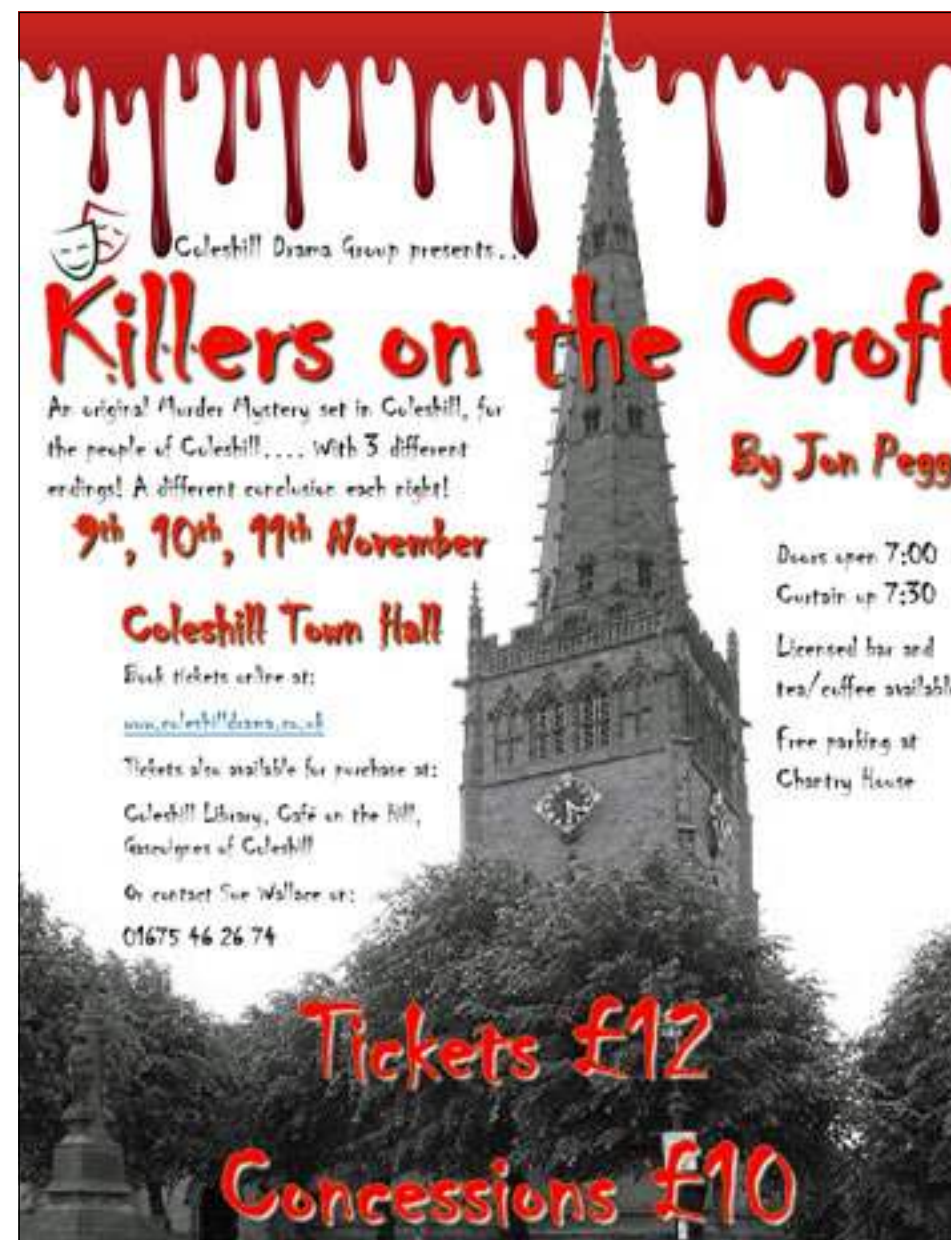
THE COMPLETE DESIGN & INSTALLATION SERVICE
We offer a full installation service with a 3 year warranty

Visit our large kitchen & bathroom showroom
established since 1989

TEL: 0121 604 6464

32 East Meadway, Kitts Green, Birmingham, B33 0AP

www.kavsbathrooms.co.uk

Coleshill Drama Group presents...
Killers on the Croft
By Jon Pegg

An original Murder Mystery set in Coleshill, for the people of Coleshill... With 3 different endings! A different conclusion each night!
9th, 10th, 11th November

Coleshill Town Hall
Book tickets online at:
www.coleshilldrama.co.uk
Tickets also available for purchase at:
Coleshill Library, Cafe on the Hill,
Gascoignes of Coleshill
Or contact Sue Wallace on:
01675 46 26 74

Doors open 7:00
Curtain up 7:30
Licensed bar and
tea/coffee available
Free parking at
Chantry House

Tickets £12
Concessions £10

Craft & Gift Fair

Victory Hall

76 Chester Rd, Castle Bromwich B36 9BU
Car parking available at The Men's Club next door
X12 & 71 buses stop close by

JEWELLERY **Saturday**
BAGS **November 18th**
CARDS

BRIC-A-BRAC **10.00 – 2.00**

AND LOTS MORE **HOME MADE CAKES**
TEA/COFFEE

All profits to charity

mclifetchurch.com



'Helping Retirees Enjoy Their Retirement'

HBFS Equity Release Ltd only advise you on lifetime mortgages where you retain 100% ownership and the deeds to your property. All the products meet the standards and principles set out by the Equity Release Council so you have the peace of mind of knowing that you and your family are protected by these customer focused safeguards as well as being regulated under the Financial Conduct Authority.

CALL 01564 711015

WE OFFER AN INDEPENDENT NATIONWIDE SERVICE

www.hbfsonline.co.uk

Email: k.tedstone@hbfsonline.co.uk - k.teague@hbfsonline.co.uk

HBFS Equity Release Limited Authorised and Regulated by the Financial Conduct Authority - Registration Number 304106

Coleshill Remembrance Parade and Service 2023 – All welcome



Coleshill's Town Mayor, Councillor Tony Battle, The Reverend Sarah Tillett from Coleshill Parish Church and Mr Ray Richardson from the Royal British Legion, wish to extend a cordial invitation to you to join them at the Annual Remembrance Day Parade and Service which will take place at the war memorial on the grounds of the Parish Church on Sunday 12th November 2023.

The Parade: Those wishing to join the parade are asked to be at Chantry House, High Street, Coleshill, B46 3BG no later than 10:15. The Parade will leave the grounds at 10:30 and process through the town to the Parish Church, Church Hill.

Please note the change of location for the start of the parade (please check social media or the Parish notice board for any further changes to the Parade route).

The Service: Those wishing to attend the service only, are asked to gather on Church Hill by the church wall (opposite Bank House) by 10:40, for the service to commence at 10:50, kindly be directed by members of

the church community, volunteers and Coleshill Town Council Officers.

During the service there will be the formal wreath laying of the dignitaries' wreaths. All other wreaths are encouraged to be laid after the service. There will also be an opportunity to lay wreaths on Armistice Day, Saturday 11th November 2023 at an outdoor service conducted by the Parish Church from 10:50.

Please note: This is an outdoor service; no seating will be available outside the Church. Space will be reserved for the Town Band, dignitaries and official parade attendees only.

Car parking facilities will be available at Coleshill Primary School, Wingfield Road, Coleshill, B46 3LL.

For information: the church will be open throughout the day for personal reflection, prayer and candle lighting. Toilet facilities (including disabled toilet) are also available in the church.

Santa's Grotto, Face painting, Tombola, Christmas Cakes and lots of Christmas Craft Stalls, & Christmas Carols!

Hudson's Care



Day Service's Christmas Fayre

Sunday 26th November
11am - 3pm
Coventry Road Coleshill
B46 3ED

If you would like to book a table please contact enquires@fatherhudsons.org.uk or 01675 434000

Park Access® is the new benchmark for accessible and inclusive parking and electric vehicle charging



British Parking Association and Disabled Motoring UK launch pioneering new accreditation

Park Access® is a brand new accreditation that aims to become recognised throughout the whole of the UK for accessible and inclusive parking and electric vehicle charging facilities. Park Access will enable everyone, regardless of their accessibility needs, to identify car parks and facilities, such as EV charge points, that they can use with ease. Park Access brings together the very best of two accreditations – the Disabled Parking Accreditation and People's Parking Award to automatically become the UK's industry benchmark for accessible and inclusive parking and electric vehicle charging facilities.

Park Access EV includes requirements and recommendations for accessible EV charging informed by the new British

Standard Institution accessibility standard, PAS 1899. A Park Access Handbook has been produced to provide parking operators with guidance and clarity, simplifying the process to ensure that their car parks and EV charge points are accessible to everyone.

Sara Fisher, BPA Head of Operations and Business Development, said: "The parking sector is constantly evolving with the exciting growth in popularity of electric vehicles and the drive to net zero. The BPA is leading the EV parking revolution and recognises there is also a need to ensure that car parks and EV charge points are accessible to everyone. Park Access is a brand-new benchmark for accessible parking and charging."

"We want all motorists, whatever their abilities, to plan their journey, parking, and EV charging with confidence. That's why we have included Park Access sites alongside Safer Parking sites on our Park Mark® car park finder and on other major parking apps."

For more information visit: www.britishparking.co.uk/Park-Access

Park Mark® Car Park Finder: <https://parkmark.co.uk/car-park-finder?query=>

Bed Bugs: Night night sleep tight, don't let the bed bugs bite



A saying that has been used by parents and guardians for many years when tucking young children into bed, "sleep tight, don't let the bed bugs bite" but unlike the name suggests bed bugs don't just make their home in bedrooms and beds, they can infest just about any room in your property hiding away in cracks and crevice's, behind skirting boards, inside bedside furniture, behind picture frames and loose wallpaper, plug sockets and light switches, and I've even found them hiding in the remote control for the TV.

In short, Bed Bugs can thrive anywhere there is a food source – blood, yes that's right they feed off human hosts usually while we sleep.

Bed Bugs were virtually eradicated in the UK during the 50's and 60's but due to

the onset of insecticide resistance and the popularity of international travel they started to make a reappearance in the late 70s to mid-80s and have now reached almost epidemic levels here in the UK as well as around the world.

If you have been unlucky enough to experience having Bed Bugs, you will know it is no laughing matter. This small blood sucking insect can turn yours and your family's life upside down and ruin a guest house or hotels reputation.

We are often asked "how have we ended up with Bed Bugs? We keep our property clean and tidy", I can tell you hand on heart, a bed bug infestation has nothing to do with how clean or dirty a property may be, bed bugs can be picked up by anyone and from some of the most unexpected places.

Bed Bugs have always been associated with travellers and traveling but it is not just hotels, hostels, and guest houses that they can be picked up from, they have even been found on public transport and within cinemas and theatre seating, in fact anywhere with a constant turnover of people.

You see Bed Bugs are fantastic hitch hikers and it is not always obvious where they have come from, but commonly they can be introduced to your property after attaching themselves to luggage, bags, clothes or through bringing second-hand furniture into your property, they can even

nip through from next door.

A female Bed Bug lays 200 – 500 eggs over a two-month period in batches of 10 to 50 and dependent on the environmental conditions these eggs can hatch in just over 7 days and the newly hatched nymphs shed five times before reaching maturity. A blood meal is needed between each moult, and under favourable conditions with a ready supply of blood, they can mature in as little as a month and produce multiple generations per year.

So how do you know if you have Bed Bugs? The truth is you can go months without knowing you have them, these vampires of the insect world only come out of hiding during the night to feed on their unsuspecting sleeping host attracted by the CO2 that they breathe out and it's not until their numbers have increased significantly do you start to see some of the more common tell-tale signs of a Bed Bug infestation, such as blood smears, but in fact it's not blood, it's blood enriched Bed Bug poo. This faecal matter can usually be found on bed sheets and around the mattress edge as well as along the bed frame and headboard.

Another tell-tale sign that Bed Bugs are present are the shed exoskeletons of the Bed Bugs as they go through the moulting and development process over the five stages, you may even come across the bed bugs themselves, these are a dark mahogany brown colour and measure 2.5-5mm long flat and oval, a bit like an apple seed with legs.

We are often asked to look at photographs of welts or swellings on legs, arms and backs with the sender asking the question can you tell me what's biting me, unfortunately it's impossible to tell from photographs alone if you are being bitten by bed bugs, even your GP wouldn't be able to diagnose what's biting you, he can only guess as there are many other insects such as fleas or mosquitoes that can inflict nasty bites while you're sleeping, typically though bed bug bites tend to show themselves as a series of bites in a straight line, but this cannot always be relied upon and it can be dependent upon a person's sensitivity to the bites and as much as 48 hours may pass before the formation of a

welt can be physically seen. The bites can then become severely inflamed and sore and if scratched and the skin is broken can lead to infections. They will often bite the exposed parts of your body such as the upper torso, face, arms, or ankles but can also appear anywhere on your body if it is exposed while sleeping.

The last thing that a Bed Bug wants is for you to wake up while it is feasting upon your blood, so they inject you with an anaesthetic to stop you from feeling any discomfort and an anticoagulant to stop your blood from coagulating. Once it has had its fill, it wanders back to its hide away until it needs to feed again, leaving you none the wiser until the anaesthetic wears off.

At present Bed Bugs are not classed as a public health pest as there's no current evidence that they spread disease from person to person through contaminated blood, they are classed more a nuisance pest that can cause great psychological harm to those who find their homes have become infested, as well as huge financial burden to business premises such as hotels, guest houses and Air B&Bs through bad reviews on social media and trip advisor.

If you think you may have bed bugs, we highly recommend that you do not try to tackle them yourselves by using aerosols or insecticide bombs, these DIY products tend to disperse the bed bugs away from their harbourage sites making them even harder to eradicate. We suggest that you employ the services of a qualified professional pest control company to deal with your bed bug infestation, they will have pest control technicians who have the knowledge and experience as well as all the correct equipment needed to swiftly resolve your bed bug infestation.

Pied Piper will conduct a comprehensive inspection survey of your property and any Bed Bugs found can be treated in a completely NON-TOXIC way, without the use of harsh chemicals, because truthfully who wants to sleep in a bed or room that has been heavily sprayed with insecticide.

SLEEP TIGHT

ADVERTISE YOUR BUSINESS HERE

For more information on how to advertise in any of our titles please call:

0121 749 7502 / 07805 430191 or
 email: editor.postgroup@outlook.com



Pied Piper

Pest & Wildlife Management

All Pest Species Catered For
(except Mother in laws & teenage kids)









A Family run business established in 2006 offering industry accredited pest control & wildlife management at an affordable cost throughout Solihull & North Warwickshire.



0121 246 8879



www.piedpiperpestmanagement.co.uk



info@piedpiperpestmanagement.co.uk



Pet Page

Top tips from the RSPCA Coventry on caring for your pets during the cost-of-living crisis



At the RSPCA Coventry & District branch, we know that many of us are animal lovers and would love to adopt a furry friend into our lives. We also know that the cost of living is a concern and that potential owners are worried about looking after their pets well.

Adopt rather than shop

There are many animal charities, like ourselves, who take in animals that need rehoming. Every animal that leaves us for its forever home has been microchipped, neutered, vaccinated, and treated for fleas. While there is an adoption fee this is not only lower than buying a pedigree breed, you also know that with our organisation, the animal's behaviour has been reviewed and we can advise you on a possible pet that will fit in with your lifestyle. You can see some of our dogs and cats that are looking for a home around this article.

Shop around for pet insurance

We'd always recommend pet insurance as while it can seem an unnecessary expense, should the worst occur and your pet does, unfortunately, become ill, vet fees can soon rack up. Pet insurance can then be a literal lifesaver. Shopping around for the best insurance though is always a good idea. Compare plans and prices against your budget and always shop around at renewal time. Talk to your local vets as well, they may have partnerships with insurers or have payment plans available. When you adopt from the RSPCA Coventry and District Branch you automatically get four weeks free pet insurance.

Buy your prescriptions online

There are pet health clubs that can help with the costs of flea and worm treatments. But we'd also recommend

asking your vet for a prescription and then shopping online for the medicine. This can often be considerably cheaper than going direct and help save you money while giving your pet what they need.

Time to play

One of the greatest gifts you can give your pet is your time. While that doesn't have a direct cost attached to it there are always easy handmade toys you can make your pet to improve their life. Chew toys for dogs can be made from old t-shirts or socks simply by tying knots in them. And we all know cats love an empty cardboard box!

The benefits to you of having a pet

Finally, we'd tell you to ask yourself what the benefits of owning an animal are to you. Research shows that pets reduce our stress and anxiety and provide companionship. Something essential during times such as these. Their love and loyalty is priceless and truly rewarding.

Where else to look for support?

If you are still unsure about adopting a pet or concerned about caring for your current animal then please get in touch with us. We want to make sure our animals are right for humans and introductions as part of the adoption process are important to us. During these introductions, we also talk about looking after your animal and the options available to you.

<https://www.rspca-coventryanddistrict.org.uk/>

<https://www.facebook.com/RSPCACoventryandDistrictBranch>

<https://www.instagram.com/rspcacoventry/>



Halloween & Fireworks



Halloween is fast approaching and can be a scary time for some dogs, with knocks at the door and scary-looking people on the other side in strange costumes. Try and stick to your dog's normal routine as much as possible and if you know your dog could be worried about these strange visitors then leave them in the kitchen in their bed or wherever their safe place is when you answer the door, rather than allowing them to get stressed. Also be aware of the increased amount of sweets and chocolate you may have out waiting for the door to go as this can be toxic to dogs.

However it's not all doom and gloom some dogs love the fun and as a family you can enjoy the time together, there are lots of costumes around and if you are going to dress your dog up make sure they are happy and not stressed with it and also ensure that whatever outfit you choose doesn't restrict their movements. You could also make your dog some special dog-safe Halloween pumpkin treats there are lots of recipes online.

Bonfire Night

For a safe and hopefully relaxing night here are some top tips below: -

- Make sure you walk and feed your dog early before it gets dark.
- Check that your garden fencing is fully secured in case you need to let them out while there are bangs, and please ensure they have their collar and tag on.
- Be aware that fear trumps obedience so be mindful of this and allow your dog to be where it feels safe in the house. Create a safe space, maybe their crate with the door open, with a blanket over if they have one; start doing this now so your dog gets used to it.
- There are natural remedies available online such as plug in adapters, Scullcap & Valerian and if needs be speak to your vet now if you think your dog will be really worried.
- Remember to stay relaxed yourself so popping on the TV or radio can mask the sounds for your dog as well as helping you.
- If your dog has a drying coat or thunder coat popping that on can also help calm them.
- Rest assured that you won't make the situation worse by fussing them if that's what they want but some dogs may just like to be left alone.
- If your dog is up for it why not try some new enrichment fun, like a frozen stuffed Kong or lick mat to keep your dog distracted or play games in the house, a bit of training, doggy sit ups – tire that mind out and lower the arousal, so they settle more easily.
- After the night itself some dogs may take time to full relax so consider the enrichment mentioned above or allow them space and if your dog is really struggling then seek professional advice to help them and make things easier for next year.

Ward End Cat Rescue

We are a small, home-based rescue, run solely by volunteers.

Here are a few of our cats who are currently ready for adoption, this can change daily so please feel free to email us for more details of cats available by sending us a contact number, address and who lives in your household.

Fred is a lovely cat, aged approx 1-2 years old. He is very friendly most of the time but can be a bit cheeky and unpredictable at times.



Bertie is approximately 1 year old and a really loving, friendly cat.



Please come and support us at our fundraising Christmas Fayre on the 2nd December, full details on the poster. We are looking for raffle/tombola prizes for this Christmas event and also volunteers to help on the day. If you are a local business and could offer a prize please let us know. Please contact Suzy at the rescue for more information.

If you're looking to adopt a cat, or if you'd like to support the work of Ward End Cat Rescue, please visit our facebook page [WARD END CAT RESCUE OFFICIAL](#) or email us on wardendcatrescueofficial@outlook.com



TIME TO TOUGHEN UP SAYS OPEN SPACES SOCIETY



The Open Spaces Society⁽¹⁾ considers that it is vital to get tough in these times of austerity. The general secretary, Kate Ashbrook, writes in Opinion, in Open Space, of the parallels of today with the post-war period which produced the National Parks and Access to the Countryside Act 1949, known as 'the People's Charter'.

Says Kate: 'That Act, the 75th anniversary of which we celebrate next year, was ground breaking, giving us national parks, areas of outstanding natural beauty, definitive maps of rights of way, and much more. Good things flowed in a time of austerity.

'We have austerity today, but there aren't so many of the good things. Public paths and open spaces suffer when local authorities are starved of resources. We shall hit them with legal notices to force action, taking them to court if necessary, to show that they must prioritise spending on paths and access, which are so crucial to people's health and well-being,' Kate declares.

'We need more access close to home, to help those without the means, confidence, or ability to reach the natural environment. Legal access to woodlands and watersides, and on water would be admirable. Developers must be mandated to register spaces as town and village greens⁽²⁾, to guarantee local people's rights there and protect them for ever.'

'Public paths, the most important means of gaining access to the outdoors, must be properly recorded, protected, and maintained. A new government must repeal the cut-off for historic-path claims⁽³⁾; use agricultural money for new access; and provide enough funds to get our rights of way fully open and usable—among much else,' Kate says. 'This is vital for levelling up—and a fitting way to celebrate the 75th anniversary of the People's Charter.'

Also in this issue of Open Space:

Saving Blackwell parkland in Darlington.

The Dartmoor backpack camping case explained.

The society's presents the Eversley Award to Norfolk activist, Ian Witham.

Successes on open spaces in Lancaster and Bristol.

Commons stories in Hertfordshire, Powys, Bridgend, East Sussex, and Cornwall.

Path claimed in East Sussex.

Paths reopened in Cornwall, and Oxfordshire.

www.oss.org.uk

1. The Open Spaces Society was founded in 1865 and is Britain's oldest national conservation body. It campaigns to protect common land, village greens, open spaces and public paths, and people's right to enjoy them.

2. A town or village green is land which local people have used for informal recreation for 20 years without being challenged or asking permission. It is possible for a landowner voluntarily to register land as a green without such evidence. Once registered the land is protected from development and encroachment, and local people have rights of recreation there.

3. In 2000 the government introduced legislation to prevent people from claiming historic paths for the definitive map after 2026. The government has said it will extend this until 2031, but it is still far too short a period for volunteers to claim the thousands of historic routes which need to be rescued.

Interiors & Decorating

Painting and Decorating in the UK: A Journey Through History

The art of painting and decorating has a rich and storied history in the United Kingdom, dating back centuries. From the ornate interiors of royal palaces to the charming cottages of the countryside, the UK's history of painting and decorating is a testament to both artistic expression and practical craftsmanship. In this article, we will take a journey through time, exploring the evolution of this craft from its early roots to the modern era.

1. Early Beginnings: Medieval and Renaissance Periods

Painting and decorating in the UK has its roots in the medieval and Renaissance periods. During this time, artistry was primarily focused on religious and royal commissions. Skilled craftsmen adorned cathedrals, castles, and palaces with elaborate frescoes, tapestries, and ornate wall treatments. The aim was not just to beautify but also to convey religious and political messages.

The most iconic example of this period is the stunningly decorated Westminster Hall in the Palace of Westminster, featuring a hammerbeam roof and numerous heraldic motifs. The use of natural pigments, gold leaf, and intricate detailing marked this era of painting and decorating.

2. The Georgian Era: Neoclassical Elegance

The Georgian era, spanning the early 18th century, brought about significant changes in the world of painting and decorating. The neoclassical style, inspired by ancient Greece and Rome, gained popularity. Interiors were characterized by stuccoed ceilings, decorative moldings, and symmetrical patterns. Prominent designers like Robert Adam and Josiah Wedgwood influenced this era's aesthetics.

Stately homes, such as Chatsworth House in Derbyshire, showcased this neoclassical elegance. Elaborate wall treatments, including hand-painted wallpapers and trompe-l'oeil murals, became increasingly popular.

3. The Victorian Era: A Flourish of Eclecticism

The Victorian era, from the mid-19th century into the early 20th century, saw a flourish of styles in painting and decorating. The Industrial Revolution allowed for the mass production of decorative elements like wallpaper, which became more accessible to the middle classes.

Homes during this period featured richly patterned wallpapers, ornate woodwork, and a penchant for dark and heavy colour schemes. The Arts and Crafts movement, led by designers like William Morris, emphasised handmade, nature-inspired patterns in response to industrialisation.

4. The Arts and Crafts Movement: A Return to Craftsmanship

The late 19th and early 20th centuries marked a shift towards the Arts and Crafts movement, which advocated a return to craftsmanship and traditional techniques. This movement, led by visionaries like William Morris and Charles Rennie Mackintosh, celebrated the handcrafted and the individual.

Arts and Crafts interiors were characterised by the use of local materials, intricate detailing, and a focus on simplicity and functionality. Hand-painted tiles, stained glass, and custom-made furniture became key elements of the movement.

5. The Mid-20th Century: Modernism and Minimalism

The mid-20th century brought a significant departure from the elaborate designs of the past. The modernist movement embraced minimalism and functionality. In interior design, a "less is more" philosophy prevailed. White and neutral colour palettes, open spaces, and simple lines were the hallmarks of this era.

Designers like Terence Conran and Robin Day championed the use of clean, unadorned surfaces. The minimalist approach allowed for greater flexibility in personal expression, enabling homeowners to incorporate their own style through choice of furniture and décor.

6. Contemporary Painting and Decorating: A Fusion of Styles

Today, the world of painting and decorating in the UK is a fusion of diverse styles and influences. The British Isles have always been a hub for creative inspiration, welcoming various design movements from across the globe. Whether it's the industrial chic of converted warehouses in East London or the timeless elegance of Georgian townhouses in Bath, contemporary interiors reflect a blend of old and new.

7. The Role of Technology

Advancements in technology have revolutionised the painting and decorating industry. Computer-aided design (CAD) software enables designers to create and visualise intricate patterns and colour schemes with precision. Virtual reality tools can provide clients with immersive walkthroughs of proposed designs, helping them make informed decisions.

Additionally, modern paint formulations have evolved to be more environmentally friendly, and smart home technology allows for dynamic lighting and climate control, enhancing the overall ambiance of interior spaces.

8. Sustainability and Eco-Friendly Practices

In recent years, there has been a growing emphasis on sustainability and eco-friendly practices within the painting and decorating industry. This shift reflects broader concerns about environmental conservation and responsible consumption.

Many decorators now opt for low-VOC (volatile organic compound) paints that are less harmful to the environment and human health. Additionally, reclaimed and repurposed materials are increasingly used to create unique and environmentally conscious interiors.

9. The Influence of Cultural Diversity

The UK's multicultural society has significantly influenced the world of painting and decorating. Diverse cultural traditions and design aesthetics have found their place in British interiors. From the vibrant colours and patterns of South Asian decor to the minimalist elegance of Japanese design, this multicultural influence has added depth and variety to the craft.

10. The Future of Painting and Decorating

The future of painting and decorating in the UK is likely to be marked by continued innovation and adaptation. Sustainable and eco-friendly practices will become more prominent, and technology will continue to play a crucial role in design and execution. Moreover, the UK's design community will draw inspiration from global trends while preserving the rich heritage of its own artistic traditions.

In conclusion, the history of painting and decorating in the UK is a captivating journey through time. From the opulent interiors of medieval castles to the minimalist spaces of the modern era, this craft has evolved in response to changing tastes and influences. The UK's unique blend of tradition and innovation continues to shape the world of interior design, making it an exciting and dynamic field that embraces the past while looking to the future.



PLATINUM
INTERIOR DECORATING



PLATINUM
INTERIOR DECORATING

We are a husband and wife
painting and decorating team

All aspects of domestic and small
commercial projects undertaken

Contact Jim or Clare
for a free quote on:

0121 747 7202

07814 566657
or 07792 508819

- Free written quotes
- Friendly, clean and reliable service
- Advice available on colour matching

info@platinuminteriordecorating.co.uk
www.platinuminteriordecorating.co.uk



Christmas Shows

Castle Bromwich Singers

Bells will be ringing and carollers will be singing, as Castle Bromwich Singers present two very different shows this Christmas.

"It's Christmas" is our main show featuring all your favourite, familiar Christmas songs both modern and traditional. We'll be jingling and jolly-ing to make your evening merry and bright.

"It's Christmas"

Wednesday 6th, Thursday 7th, Friday 8th Curtain up - 7.30pm
Saturday 9th Curtain up - 5.00pm

Arden Hall, Castle Bromwich B36 9PB

The bar is open from Thursday to Saturday with other refreshments available.

Our second show, "Carols by Candlelight" the following week, celebrates the reason for the season with carols and songs to feel peace, joy, hope and love as we spread some Christmas magic.

"Carols by Candlelight"
Tuesday 12th - 7.30pm

Baptist Church Timberley Lane, B36 7HU

Our charity this year is Read Easy which offers free, one-to-one coaching to adults who want to learn to read via their trained volunteers. Over 7% of the working age population in the UK can barely read or cannot read at all. Please come and support our shows and be on Santa's nice list this Christmas.

Tickets are available via www.ticketsource.co.uk and on the door each night of the shows. Please see the posters below for all details.

Ho-ho-ho! Goodwill to all.

bn BIZNET
LOCAL
CONNECTING LOCAL BUSINESSES

Social business networking event

Nov 20th - 6pm til 8.30pm

- We meet up on the 3rd Monday of every month
- Relaxed informal business networking
- No Commitment
- Raise your business profile
- Meet like minded people
- Business card and leaflet table available (bring your literature)
- If you would like to sign up for future presentations (ask a member of the team)

Price £5 per person

Bar will be open for refreshments
Tea and Coffee available

Contact us

email: networking@biznetlocal.co.uk

call: Serena 07805430191



Guest Speaker Katie Smith

- Bodyshop at Home Consultant Katie Smith will be doing a live demo.

- Talking about how this has become her full time job.

- How you can become a consultant to earn extra income alongside what you currently do.

- How you can book a free pamper session.

The Dog Inn Pub
2 Marsh Ln, Water Orton,
Birmingham B46 1NW

FLOWERS

Landscape Gardening & Block Paving Specialists



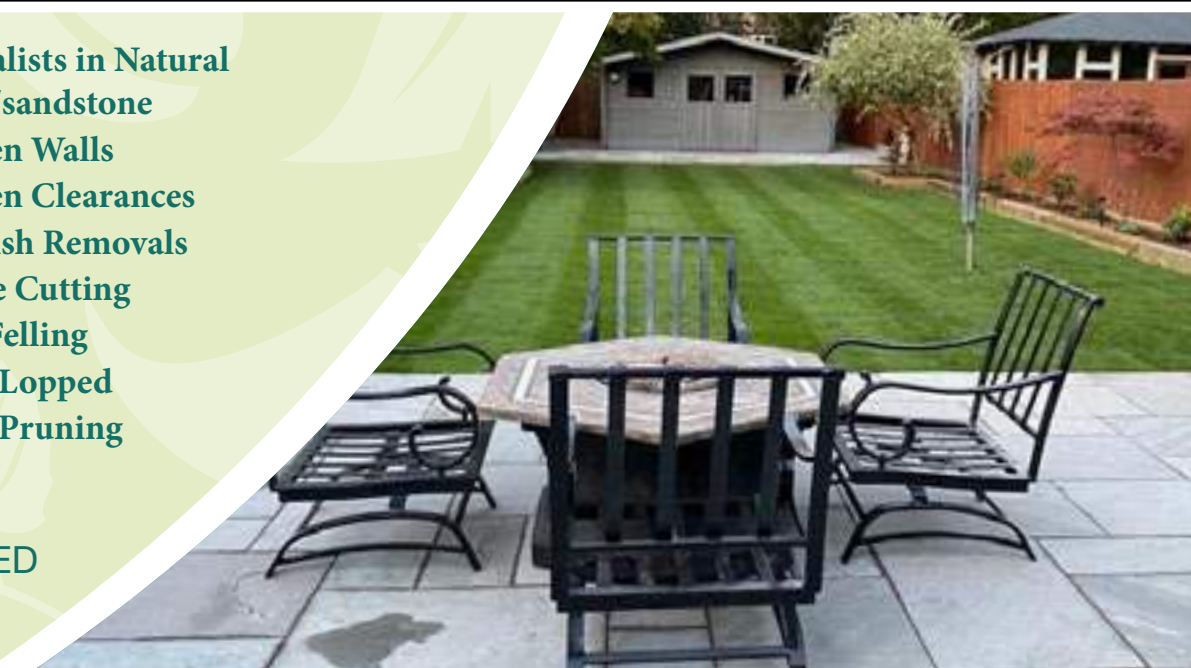
- Block Paving
- Porcelain paving
- Resin Bond driveways
- Tarmac
- Slabbing
- Drive Repairs
- Turfing
- Grass Cutting
- Fencing
- In-print concrete driveways
- Specialists in Natural stone/sandstone
- Garden Walls
- Garden Clearances
- Rubbish Removals
- Hedge Cutting
- Tree Felling
- Trees Lopped
- Trees Pruning

ALL WORK IS GUARANTEED & CARRIED
OUT BY FULLY INSURED WORKMEN

Call for a FREE no obligation quote

T. 0121 770 0362 M. 07773 503816

flowers-landscaping.co.uk



LOCAL SERVICES



GODWOOD GLASS & GLAZING
Est 1982

Broken Glass Replaced
Broken or Misted Double Glazed Units
UPVC & Aluminium Window Repairs
Handles & Hinges Replaced
Window & Door Locks Fitted
All Types of Glass Fitted
No Job Too Small

FOR A FREE QUOTE CALL

Call 07787 804153 and I will call you
straight back

Your Local Castle Bromwich Glazier

Xtreme Tree Care

- Crown Thinning and Reduction
- Felling and Dismantling
- Pruning and Shaping
- Hedge Trimming and Removal
- Specialist Stump Removal

Fully Insured
All Staff Fully Qualified
20 Years Experience

For a free quotation from your
Local Tree Surgeon call
07951 332 401

11 Shawbury Cottages, Pump Lane, Shawbury, Coleshill, B46 2RW
xtreemetreecare@bt.com

COLESHILL ROOFING

- UPVC Fascia & Soffits
- Tile, Slate & Flat Roofing
- Hi-Performance Torch on Felts
- Maintenance Free Guttering Repairs
- Full Insured for your peace of mind
- Skilled, Qualified Craftsmen

OVER
40
YEARS
EXPERIENCE

CONTACT US FOR A FREE QUOTATION



01675 462 344

07956 890 488 / 07966 409 706

coleshill.roofing@yahoo.co.uk

www.coleshillroofing.co.uk



ADVERTISE YOUR BUSINESS HERE

For more information on
how to advertise in any
of our titles please call:
0121 749 7502
/ 07805 430191
or email:
editor.postgroup@outlook.com

READ OUR PAPERS ON THE GO

www.postgroupmidlands.com



POST GROUP
MIDLANDS LTD

COLESHILL & DISTRICT GARDENING CLUB

Monday 20th November

Come along and enjoy making a table decoration or a
Christmas door wreath. Foliage/oasis will be provided.
All equipment will be available however please bring anything
that you may want to use/add to your decorations.

7.30pm Coleshill Community Centre,
Temple Way, corner of Station Road.

Members £3.50 Non Members Welcome £5
Refreshments included.

For more information contact Meda on 07549037477

Local Sports



All about the TEAM-work as Coleshill's Candidate Source back girls football team

A budding group of girl footballers, keen to emulate the likes of Mary Earps,
Lucy Bronze and Alex Greenwood, has been given a major boost by the
recruitment sector.



Allenton United (Group 1): (l-r) Ricky Shepherd (Allenton United), Michelle Davies (Candidate Source), Carly Croft (Allenton United) and Andrew Davies (Allenton United) with the Under-12s girls team.

Allenton United Under-12s has netted more than £6250 of sponsorship from Coleshill
recruitment advertisement agency Candidate Source, who has been offering training to
members of TEAM (the UK's largest network of independent recruiters) in return for a
£30 donation.

37 companies have taken part so far in the courses that are designed to help teach them
how to write the best possible job adverts, critically important when you consider the
current volatility of the labour market.

The funding has been used to buy 9v9 goals, 20 new footballs, a subs bench, equipment,
away strips and clothing for the management team, as the ambitious team look to claim
top spot in Division 2 of the Derbyshire Girls and Ladies League.

In order to boost team spirit, the money has also been channelled into fun evenings and
days out for the players (bowling, mini golf, laser quest and Oxygen trampoline park),
whilst also creating Christmas and Easter 'goodie bags'.

"This is great way to start the season and has given the team a major boost," explained
Carly Croft, who has been a manager of Allenton United for the last three years.

"The new kits really look the business and, importantly, we also have additional training
gear, coats and snoods that will be needed when the usual UK winter kicks in."

She went on to add: "It's going to be a big season for us. We've been together now

for three years, and the girls are ambitious to play at the highest level – after a very
promising pre-season we're setting our sights on promotion to the top division.

"Our players have been inspired by the Lionesses' outstanding performances at the
World Cup and, thanks to Candidate Source and TEAM members, we now have all the
equipment we need to help give our players the chance to turn their dreams into a
reality."

Allenton United celebrates its 20th year as a football club in 2023 and has seen interest
in the ladies' game increase massively.

It has gone from having just one female team to boasting multiple sides, including an
adult team, four juniors and a 'Wildcat' system that gives young girls who have never
played the 'beautiful game' the opportunity to have fun and learn basic skills.

The Under 12s have had a good start to the season, winning their first two games and
scoring ten goals in one of the matches.

Michelle Davies, founder of Coleshill-based Candidate Source, added her support:

"The recruitment sector is a competitive market, so it's great to see companies involved
in the industry coming together to support the communities they operate in.

"With the Lionesses capturing national headlines in the World Cup, we thought now
would be the perfect time to support the next 'Lauren Hemp', 'Lauren James' and
'Alessia Russo' by helping fund a grassroots football team."

She went on to add: "Allenton United has a fantastic community spirit and are doing
a lot of work on the ground to get girls into football, so we thought they would be the
perfect club."

Candidate Source has been working with the recruitment industry for 13 years,
providing a range of bespoke services to help fill vacancies quickly and with the best
possible person.

This is achieved by creating job adverts, identifying the most relevant job boards,
emergency candidate boosts, media buying and delivering training.

The latter is what has driven the funding for Allenton United, with the company
training hundreds of employees from 37 TEAM members in how to write an online job
advertisement.

For a donation of £30 per trainee, consultants learned how to get a better return on
their best advertisement and investment.

Michelle went on to add: "We train them to think like a candidate and include all the
information a job seeker needs to make an informed decision. They also receive a lot of
tips and tricks to ensure the advert is seen by the largest group of individuals possible.

"TEAM members have embraced the offer and, together, we have raised over £6250 for
Allenton United Under-12s girls team. For the companies who sent a lot of consultants,
we have offered them the chance to have their branding on display, with Meridian
sponsoring the away shirts/rain jackets and Jobwise the snoods."

Allenton United's Carly Croft concluded: "The girls and my management team want to
say a big thank you to TEAM and Candidate Source for placing their faith in us."

For further information, please visit www.candidatesource.uk.com

Julie ENGLISH Interiors

BEDROOMS - BATHROOMS - KITCHENS - HALLWAYS

Create Your Perfect Space
One to One Professional Advice &
Guidance Every Step of The Way
To Ensure Perfection
Supply Only or Supply & Installation
Service

Showroom: 205 Tyburn Road, B24 8NB 01214484290 or Contact Julie@julieenglishinteriors.co.uk

Doyle increases career sporting feats to 832



More sporting feats bite the dust for Paddy Doyle who is on the way to increase his career fitness endurance titles and World Records to 1000 physical fitness challenges and World Records covering ten different sporting categories.

He has achieved to date over various Warwickshire venues, arduous military load bearing back pack weight of 50lbs on a 37% incline (20 meters up and down) in 11min. 14.56 sec. 5.31 km cross country run/walk carrying 50lb back pack in 58 min. 25 sec. 1.44 miles carrying 45 lb back pack in 16 min. 10.25 sec. Pooley Park mountain bike course North Warwickshire, carrying mountain bike Instructor expedition kit 35lbs completed the following distances, 8 km - 27 min. 24 sec, 8.5 km - 33 min. 36 sec, 9 km - 38 min. 50 sec, 9.5 km - 43 min. 10 sec, 10 km - 48 min - 44 sec, 10.5 km - 53 min- 49 sec, 11 km- 58 min. 58 sec and 11.5km in 1 hr. 03 min. 40 sec.

The former Paratrooper and ex Army / RAF reservist commented

"I am committed to reach the 1000 global milestone covering ten different sporting disciplines, attempting various physical fitness challenges puts a lot of pressure on the body your muscles and joints are being pushed to their limits, I have to be the first

English endurance athlete to claim the 1000 total. Scottish endurance athlete William Cannon is also aiming for the title as well, I am lucky to have a great support team who are pushing me every mile of the way plus the stewards from various sporting bodies and World Record Associations who independently check the course measurements, stopwatch distances and take action photos and video evidence."



Picture credits David Hastings (Warwickshire UK)

Water Orton & District Tennis Club



So ends another good year of our close working project with the Woodlands School in Coleshill.

This is our 8th year working with these youngsters and once again it's been a very enjoyable time. We would like to thank Mr Phil Sowers Head of P.E. and the excellent hard-working and devoted staff who accompany him and help out with tennis sessions here at our club. They visit us twice every school term week from Easter until the October half term and we all really enjoy having them come to us.

We look forward to having them back with us in 2024.

We have also started having a weekly visit to our club from Water Orton Primary School, once again with their

excellent staff, who organise the weekly sessions. Hopefully these will also develop in 2024 and we can get more involved with the school going forward. It's been a very good year for us as a club and our junior and youth players have done really well.

All credit to our club coaches, Adam Heaton and Liam Berrigan, along with our Level 1 Coaching Assistants Joe Pedley and Cameron Crawley who have done so well this summer. Along with Jess and Chloe-Rose, this gives us a great support team to help work with our junior and youth members.

We are already looking forward to 2024 and taking our club to the next level. Thank you to our Committee and all our members for a really successful year.



Water Orton Cricket Club Social Events

Hi everyone,

Following the recent fantastic Lionel Ritchie Tribute we will be booking him again next year once we know his availability. The support for this show was amazing and we have been asked so many times to get him booked again and we will. We have already got the following booked for 2024

2nd March Elton John Tribute. 12th October Rod Stewart with the fantastic Garry Pease and on 16th November we have the Tina Turner Tribute with the fabulous Millie Munro (she's simply the best) There will also be a couple of Quiz Nights booked in and all the confirmed dates will be here in your editions of The Coleshill Post and The Castle Bromwich Post. Confirmed dates, ticket prices and dates the tickets go on sale will all be listed. Notices are also on the outdoor

notice board by the driveway in, and on the notice inside the clubroom. Tickets are always available from the bar in the clubroom, or Pete Coles at the Cricket Club and Paul Messenger at the Tennis Club.

To round off 2023 which has been a great year for us at the Cricket Club, we have Mark Green with his brilliant Elvis Experience. This is on November 11th tickets now on sale £8-00 each.

We are also having a New Years Eve Party with a great party Disco with all music to suit our members and supporters. Tickets will go on sale at the start of November and will be £12-00 each

Thanks once again our wonderful supporters, we really do appreciate you being there for us. Your support through the winter helps us so much during the months when there is no cricket on.

THANK YOU.



Coleshill Town F.C.

All change at Coleshill Town F.C.

After Six years and 247 games in charge, Manager Cameron Stuart has decided to move on. In that time Cameron gained promotion to Level 4 on the non league pyramid system, the highest level that Coleshill Town have played in their 138 year history, established them as a force in the Northern Premier League, and only just missed out on a second promotion last season making it to the play offs. Everyone at CTFC would like to thank Cameron for his efforts in the last six years and wish him all the best in the future.

So what now for Coleshill?

The first match without Cameron, it was down to experienced players Paul Hathaway and Rob Evans to be temporarily in charge. Within a week Dave Stringer, previously with Sutton Coldfield Town, was appointed

Manager. Several experienced players decided to leave Coleshill, some following their previous manager, so Dave Stringer had a job on his hands. His first game brought a 3-1 win over Rugby Town, encouraging, but with old players leaving and new players coming in, confidence was at an all time low. Coleshill travelled to Harborough with a scratch side and came up against two former players, Kai Tonge and Amarvir Sandhu, a 3-0 loss, a Red card and a goal by Tonge, his first for his new club, knocked the confidence further. A 2-1 defeat to bottom of the league Rushden, another Red card, then a cup defeat to a team from a lower league and yet another Red card and Dave Stringer left the club by mutual consent.

Chairman Paul Billing immediately turned to the experienced and club legend, with over 450 appearances, goalkeeper Paul Hathaway to lead this club through a very difficult period. His first game in charge is a local

derby away to Coventry Sphinx.

Come on people of Coleshill! Your local club is going through a very difficult period and need your support like never before. Paul Hathaway has been a hero for this club many times, he scores penalties as well as saves them, but is new to Management and needs time, support and lots of luck to steer this club through these difficult waters!



COME ON THE COLEMEN!

Fixture List

Pitching in Northern Premier League Midland Division games unless stated.

Saturday 28th October

Home to Cambridge City.

Saturday 4th November

Home to Walsall Wood.

Saturday 11th November

Away to Hinckley LR.

Monday 13th November

Home to Redditch United. 7.45pm. Birmingham Senior Cup.

Saturday 18th November

Home to Spalding United.

Saturday 25th November

Away to Anstey Nomads.

Saturday 2nd December

Home to Boldmere St Michaels
3.00pm kick off unless stated.

Coleshill Town FC match reports

All Northern Premier League Midland Division games

Saturday 30th September

Shepshed Dynamo 1 v 0 Coleshill Town

With the exit of manager Cameron Stuart it was experienced players Paul Hathaway and Rob Evans who took charge for this game. Chances were at a premium and it looked a 0-0 all day long but a penalty half way through the second half gave Dynamo the points.

Saturday 7th October

Coleshill Town 3 v 1 Rugby Town

A new manager and a very welcome three points. Theo Rowe scored late in the first half but Rugby equalised early in the second. George Washbourne put the Coleman back in front and a second from Theo Rowe confirmed the win.

Tuesday 10th October

Harborough Town 3 v 0 Coleshill Town

Coleshill's leading goalscorer from last season, Kai Tonge, 36, scored his first goal for his new club against Coleshill. Josh Willis was shown a Red card and against 10 men the home side scored two more.

Saturday 14th October

A.F.C. Rushden & Diamonds 2 v 1 Coleshill Town

A very poor performance as established players leave and new players come in. Five debutants in this game. Rushden are bottom of the league with zero points and were jubilant to get their first win. Debutant Ryan Nesbit scored from the penalty spot, and after a Home player was shown a Red card, Rob Evans also saw red for retaliation.

Tuesday 17th October - Walsall Senior Cup

Tivdale 4 v 3 Coleshill Town

A cup run would do the club and players an opportunity to gain their confidence back and at 3-1 up it looked on the cards. Two goals from Ryan Nesbit and one from Sam Fitzgerald, both new players, put the Coleman in charge but a young talented home side hit back with three goals in six minutes to progress to the next round. George Washbourne was shown a Red card.

Saturday 21st October

Coventry Sphinx 0 v 0 Coleshill Town

New manager Paul Hathaway's first game in charge and a point on the table. A very even game between two committed teams. Chances at a premium but the best chance fell to Lewis Archer who sped away from the home team's defence but sent his shot wide. But for Paul Hathaway a well earned point.

ADVERTISE YOUR BUSINESS WITH US

For prices, media pack and more information

Call 0121 749 7502 / 07805 430191

or email: serena.postgroup@outlook.com



SHARE A STORY

contact:

serena.postgroup@outlook.com



Walk On

FLOORING

CARPET AND VINYL SPECIALISTS

OPENING TIMES

Mon - Fri 9:00am - 5:30pm
Saturday 10:00am - 4:00pm
Sunday CLOSED

TEL: 0121 770 9680



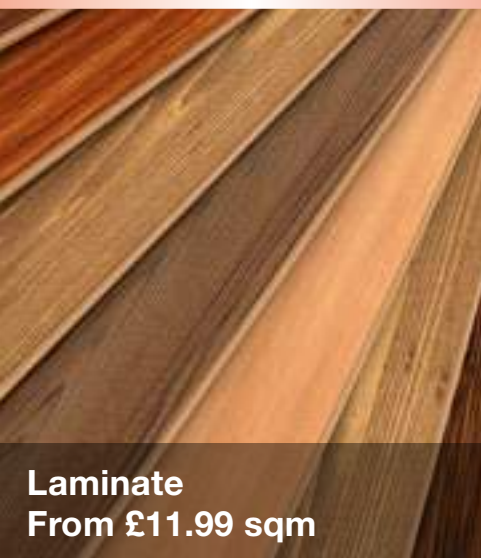
**HALF PRICE CARPET
REMNANTS WHILE
STOCKS LAST**



Vinyls
From £8.99 sqm



Carpets
From £6.99 sqm



Laminate
From £11.99 sqm



Rugs
From £30 each

Why choose Walk On Flooring?

- ★ Local fitters with over 25 years trade experience
- ★ Wide range of carpet and vinyl pattern books
- ★ All work is guaranteed and insured

Home Selection Available!

www.walkonflooring.co.uk

Quality room
size remnants
from only
£29.00



Like us on
Facebook

Showroom: Unit 3, Tile Cross Trading Estate, Tile Cross Road, Tile Cross, Birmingham B33 0NW