

the Castle Brom Post

bn BIZNET LOCAL

CONNECTING LOCAL BUSINESSES

networking@biznetlocal.co.uk

November 2023 Issue 77



postgroupmidlands.com

PICK ME UP FREE

ADVERTISE YOUR BUSINESS WITH US

For prices, media pack and more information

Call 0121 749 7502 / 07805 430191

or email: serena.postgroup@outlook.com



POST GROUP
MIDLANDS LTD

HAVE A MORE SUSTAINABLE OFFICE PARTY THIS CHRISTMAS

A COSY, RELAXED, WOODLAND EXPERIENCE.
AFTERNOON OR EVENINGS:
NOV. 10TH - DEC. 15TH

BOOKINGS FOR GROUPS (10+) OPEN NOW



Paddy Doyle increases career sporting feats to 832 in bid to gain 1000 global milestone



More sporting feats bite the dust for Paddy Doyle who is on the way to increase his career fitness endurance titles and World Records to 1000 physical fitness challenges and World Records covering ten different sporting categories.

Full story page 34

WALSH
PODIATRY

Do you suffer from hard skin, cracked heels, thickened & or discoloured toenails?

Worried your feet won't keep up with the family?

Do you struggle to manage your own feet?

hpcp
registered
www.hpcp-uk.org

Make sure your feet are in safe hands



tel. 0121 749 6313
www.walshpodiatry.co.uk

Our highly skilled Podiatry led team can put you at ease and provide specialist treatment to help your feet look and feel wonderful again
329 Chester Road, Castle Bromwich, Birmingham, B36 0JG reception@walshpodiatry.co.uk

Not tried us yet?
£5 OFF
with this Advert
*New Patients Only



the Colleshill Post
the Castle Brom Post

The Post Newspaper Group is an independent hyper-local tabloid newspaper publisher distributing 2 titles with over 14,000 copies to homes and businesses in Colleshill and Castle Bromwich each month, free of charge.

Our main aim is to provide hyper-local news and information to the community where it would otherwise not be accessible. We also offer the most effective platform for local businesses to promote themselves to their target audience. This benefits the entire community and improves social-cohesion.

Any views, articles and columns expressed in this publication are those of the contributors and not necessarily those of the Publisher, nor indeed their responsibility.

Advertising in our publications

In order to deliver The Post free to our readers we rely on advertising revenue from local companies.

We work with you to create the most appropriate package for your business, after all it's in our interest to make each advert work and keep everybody happy.

We can design professional artwork if needed and offer sound advice based on years of knowledge.

By choosing to advertise with us you are also showing your support for the community and the customers you hope to serve.

Getting in touch

Sales:
editor.postgroup@outlook.com
07805 430191

General inquires:
serena.postgroup@outlook.com
0121 749 7502

WHY CHOOSE HYPER-LOCAL?

People prefer to buy locally and they trust local print media above all else.

Show support for the community where your customers live.

Hyper-local content - every page dedicated to the local area.

Bringing the community together by making all information available in one place.

Affordable and effective advertising packages to help small businesses promote themselves better and cheaper.

Help to increase footfall on the High Street and boost attendance at local events.

Give groups, clubs and organisations space to promote themselves and let local people know exactly what is available on their doorstep.



CIRCULATION

the Colleshill Post

Coleshill North
Coleshill South
Coleshill Industrial
Water Orton
Curdworth
Maxstoke
Shustoke

Lea Marston
Marston
The Whitacres
Also dropped in Minworth

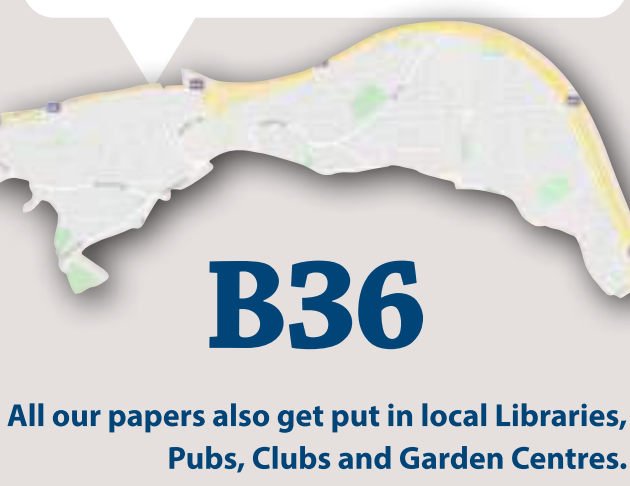


the Castle Brom Post

Castle Bromwich Hall
Park Hall
Parkfields
Green Lane West

Green Lane East
Chester Road West
Chester Road East
Bradford Road

Also dropped in Shard End and Marston Green



All our papers also get put in local Libraries, Pubs, Clubs and Garden Centres.

ALL PLUMBING & HEATING JOBS

Finance NOW available through Kanda from **0% APR**

Boilers Service £60

- Boilers install & Service
- Bathroom Fitting
- All plumbing heating & Gas jobs

Contact us for a **FREE** quote

Call Joe on: 07792 470 504
www.jpd-plumbing.co.uk

JPDEAKIN
PLUMBING & HEATING

Your trusted local Electrician

Do you struggle to find someone to carry out small jobs?

- ✓ Extra Lights
- ✓ Free Quote
- ✓ Whole Home WIFI
- ✓ Fully Insured
- ✓ New Fuse board
- ✓ Reliable Service
- ✓ Additional Sockets
- ✓ Fully Qualified
- ✓ Landlord and Homebuyer Reports

Call Tom today

01675 591047

www.finchhattongroup.co.uk

NEED EXTRA STORAGE?

Store it from only

£20

per week

absolute SELF STORAGE LIMITED

www.absolutestorage.co.uk
07704 955750 | 01675 464446 | hires@absolutestorage.co.uk
Jubilee Industrial Estate, Gorse Lane, Coleshill B46 1JU

Orton
Installations

Windows • Doors • Conservatories

Guardian Warm Roof Specialist



Windows (UPVC & Aluminium)	Garage Doors
Doors (including Bi-Fold & Composite)	Roof Lanterns
Conservatories	Domestic & Commercial Work

T 0121 730 1587 / 07732 561 569

E matthew_taylor10@sky.com

32 Birmingham Road, Water Orton, Birmingham B46 1TH

WCC YUouth Conference
Voices of Tomorrow

We are excited to announce that registration is now open for our 2023 Warwickshire Youth Conference: Voice's of Tomorrow organised by young people, for young people!

Child Friendly Warwickshire invite all young people aged 11-17 or up to 25 with SEND who live or go to school in Warwickshire to attend. The event set to take place on Friday, 3rd November 2023 and will be hosted at the Panorama Suites in the Rootes Building at Warwick University.

At this event, young people can share their ideas and thoughts on important topics with their peers. The conference offers various workshops and networking opportunities aimed at sparking valuable conversations and collaboration on themes selected by young people! These include:

- Climate Change & Sustainability
- Safety in Warwickshire
- Green Open Spaces
- Mental Health & wellbeing
- Careers/Opportunities
- Let's Talk Money
- Space for girls
- Identity (LGBT+)

For any young people interested in registering, visit www.childfriendlywarwickshire.co.uk/youthconference

VOICES OF TOMORROW:
Warwickshire's Youth Conference

FRIDAY 3RD NOVEMBER

FRIDAY 3RD NOVEMBER 2023
10 AM - 4 PM,
The Slate Conference Centre
Warwick University

Sign up to Warwickshire's Youth Conference 2023 at www.childfriendlywarwickshire/youthconference OR Scan the QR Code

Warwickshire County Council

Landscaping
AUTUMN OFFERS

<p>Porcelain Paving City Gris 600 x 600 x 20mm WAS £28.40 £24.00 per m² £26.80 inc. VAT</p>	<p>Rajstone Natural Sandstone Bundi Grey 20.25m² Project Park £18.95 per m² £22.74 inc. VAT</p>
--	--

DON'T MISS OUT! WHILE STOCKS LAST!

EH Smith Builders Merchants
Chester Road Castle Bromwich, B36 0LB

COLESHILL'S
CHRISTMAS
Cracker

THURSDAY
30TH NOVEMBER
2.00pm – 8.00pm
Coleshill High Street & The Town Hall

- CHRISTMAS LIGHTS SWITCH ON
- CHRISTMAS MARKET • SANTAS GROTTO
- FAIRGROUND RIDES PLUS MUCH MORE...

Experience the Magic of
Coleshill's
Late Night Shopping

Supported by

www.northwarks.gov.uk/coleshillchristmas

ORCHARD NURSERIES

1973 - 2023

Celebrating 50 years in Water Orton

Our Christmas Shop is now OPEN

- decorations, baubles, cards, lights, gift boxes, reindeer, wreath making components.
- lovely selection of handbags, purses and wallets and other gift ideas.
- Our beautiful, quality Nordman nonshed Christmas Trees arrived towards the end of November.
- Homemade Holly Wreaths and Crosses also available from end November.
- **WHILE STOCKS LAST**, winter flowering Matrix pansies and Violas **BUY ONE GET ONE FREE.**
- **LOGS AND COAL**
- Bird Tables and wide selection of loose bird food.

Traditional Holly Wreath Making Workshop

All materials supplied and a delicious Coffee and mince pie £30pp Sunday 26/11. @ 11am

BREAKFAST WITH SANTA AND GROTTO VISITS

Our fabulous Santa will be here as follows:
Breakfast with Santa and grotto visit.

Sunday 17/12. @ 9.30 and 11.30 Saturday 23/12. @9.30 and 11.30

To include a Traditional English breakfast (veggie and vegan options available if preordered), croissants, cracker, tea or coffee. The children will then make reindeer food with Mrs Claus before visiting Santa in his Grotto.

£15 per adult and first child, additional children £12.50.

TUESDAY 19TH DECEMBER

Grotto visits available for preschoolers and SEN, children.

Grotto only visits £7.50 per child. (Any date)

CHRISTMAS EVE BREAKFAST WITH SANTA

- AS Above but the children can also decorate their cookie for Santa and receive a carrot for the reindeer. 9.30 only session.
- Grotto only visits also available.

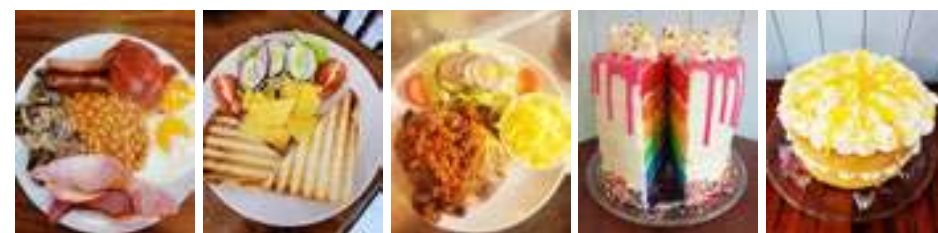
All above need to be prebooked and a deposit paid.
Call on 07450102855, or message our FB page.



The GARDENERS REST TEAROOM
Tea, Coffee, Cakes, Light Snacks - Eat in or Takeaway

Our Christmas Afternoon Tea and mini Afternoon Tea available from end of November. Please call or message to book.

Come and enjoy our freshly cooked breakfast, Vegan and vegetarian options, hot and cold sandwiches, toasties, jackets, cream teas and of course homemade cakes - takeaway options available
Afternoon tea, prebooking required for up to 25 people
Whole cakes by preorder
Traybakes and brownies also available to order
Check out our Facebook page for more details
Booking welcome, message us or call
Open currently Monday/Tuesdays 9.30 - 2pm
Wednesday/Thursday/Friday/Saturday 9.30 - 3pm
Sunday 10.00 - 2pm



Orchard Nurseries, Birmingham Road, Water Orton B46 1TG
Tel: 0121 749 7266 / 07450102855
Julie_heenan@yahoo.co.uk

ORCHARD NURSERIES | BIRMINGHAM ROAD
WATER ORTON B46 1TG
0121 749 7266
OPEN 10-5 MON -SAT 10-4.30 SUNDAY

Warwickshire Police Commissioner Backs Retail Crime Crackdown with £10,000 Grant

Warwickshire Police and Crime Commissioner Philip Secombe is showing his support for tackling business and retail crime, during Safer Business Action Week (October 16-22) with a £10,000 grant to support a more joined up approach between police, retailers and licensed premises.

The funding is to allow the Warwickshire Retail Crime Initiative (WRCI) to expand not only its membership but also to deepen the links with Warwickshire Police, with the aim of tackling prolific offending in shops, bars and pubs across the county. It has already delivered some impressive results, including arrests of several offenders.

WRCI is a partnership of own member schemes in Stratford, Leamington, Warwick, Kenilworth, Rugby, Nuneaton, Bedworth and Atherstone for retail and licensed premises. The current membership is 163 retail premises and 104 licensed premises.

Members share data via an encrypted app, DISC, on which they can also report incidents and view images of individuals who have been reported by members for committing crime and/or excluded from entering member premises because of their actions. Since July this has resulted in 77 shoplifters being deterred because members recognised them from using the app.

To date in 2023 members have reported 2,114 incidents, with 18% involving some form of violence or abuse towards the member. A total of 330 featured incidents involving individuals being on a member premises when excluded, some resulting in some form of confrontation when they were asked to leave.

Discussing the grant award, Warwickshire Police and Crime Commissioner Philip Secombe said: "The level of incidents involving some form of violence in our shops and licensed premises is simply unacceptable, as is the level of prolific offending against these businesses.

"The funding I have given to the Warwickshire Retail Crime Initiative aims to support the development of better links between police and retailers to stamp out this kind of offending and give greater confidence to businesses to report crime in the first place. WRCI members have a wealth of vital intelligence which could assist the police by forging these closer links, more targeted action can be taken against offenders. It is already delivering some concrete results and I hope to see further successes in the future."

Peter Guillaume, Board Member of Warwickshire Retail Crime Initiative added: "The Warwickshire Retail Crime Initiative and members are very grateful for the grant for the Police and Crime Commissioner which has enabled the scheme to forge closer links with Warwickshire Police to make best use of the very considerable volume of information reported by members.

"In August police conducted a town centre shop lifting operation in Nuneaton, with the majority of the target data supplied by WRCI from DISC. This resulted in the arrest of nine people, of which five were remanded in custody. Numerous fines, compensation orders, rehabilitation orders and victim surcharges followed, showing how the closer working the Commissioner's grant has enabled is already bearing fruit."

Park Access® is the new benchmark for accessible and inclusive parking and electric vehicle charging



British Parking Association and Disabled Motoring UK launch pioneering new accreditation

Park Access® is a brand new accreditation that aims to become recognised throughout the whole of the UK for accessible and inclusive parking and electric vehicle charging facilities. Park Access will enable everyone, regardless of their accessibility needs, to identify car parks and facilities, such as EV charge points, that they can use with ease.

Park Access brings together the very best of two accreditations – the Disabled Parking Accreditation and People's Parking Award to automatically become the UK's industry benchmark for accessible and inclusive parking and electric vehicle charging facilities.

Park Access EV includes requirements and recommendations for accessible EV charging informed by the new British Standard Institution accessibility standard, PAS 1899. A Park Access Handbook has been produced to provide parking operators with guidance and clarity, simplifying the process to ensure that their car parks and EV charge points are accessible to everyone.

Sara Fisher, BPA Head of Operations and Business Development, said: "The parking sector is constantly evolving with the exciting growth in popularity of electric vehicles and the drive to net zero. The BPA is leading the EV parking revolution and recognises there is also a need to ensure that car parks and EV charge points are accessible to everyone. Park Access is a brand-new benchmark for accessible parking and charging."

"We want all motorists, whatever their abilities, to plan their journey, parking, and EV charging with confidence. That's why we have included Park Access sites alongside Safer Parking sites on our Park Mark® car park finder and on other major parking apps."

For more information visit: www.britishparking.co.uk/Park-Access

Park Mark® Car Park Finder: <https://parkmark.co.uk/car-park-finder?query=>



SHARE A STORY

contact:

serena.postgroup@outlook.com



NOT MADE YOUR WILL YET? DOES IT WORRY YOU THAT...

Your children may NOT inherit all of your home or your hard earned savings... but the Government and others could!

Care Fees, Inheritance Tax, Huge Legal Fees and more devastate thousands of families, often unnecessarily.

We come to you at a time to suit you for a FREE home visit.

With the RIGHT WILL and advice, you can help ensure the maximum possible goes to those you love!

It all starts with a Will from **£95.00+VAT***
*standard basic Will



Confused? Concerned? Call Paul!
0845 055 9415 | 07980 780709
paul.palmer@accordwills.co.uk

Protect your Home

Is your home your most valuable asset? Have you worked hard your whole life to pay for and maintain it?

For most people, the answer to both of those questions will be a resounding yes. So with that said, why have so many people still not safeguarded their home the RIGHT way?

Imagine this... You've made a Will, stating that, in the event of your death, you intend for your spouse to inherit everything, including your share of the family home. But what if your spouse needs care in later life? Your spouse may be expected to pay for their care themselves... but care fees are getting more and more expensive every year, costing anywhere between £26,000 and £52,000. How can they afford to pay for their care fees and leave some money as inheritance for your children?

This is an upsetting scenario... and unfortunately, it could happen to any of us without the right protection.

The sad truth is that around 200,000 family homes are sold every year to pay for care fees. Estates are drastically reduced- sometimes to nothing at all- to pay for care, leaving beneficiaries with little to no inheritance. The lower limit for care fee means testing is currently set at £14,250. However, your loved ones' inheritance could be even less than this simply because the home and other assets were not protected in the right way.

Don't leave your home open to any risks.

All of this can be avoided- with careful planning and professional advice, you can protect your home and savings so that your children can benefit as much as possible. Putting yourself in control means you'll prevent government authorities and other parties getting their hands on your assets.



For Couples
If you jointly own your home, we can protect your property with one of our powerful Protection Wills. These will provide your partner/spouse with a right to continue to occupy the property and buy a replacement property if

necessary. The capital share you have in the property will also be protected. The property is also safeguarded from local authority means testing.

The ideal scenario is that half the property is protected from loss, and the other half is disregarded by local authorities. What this means for inheritance is that at least half of the property's shares will be passed down to your children.

This plan of action is applicable even if you have a mortgage!

Future stress and heartache for your family and beneficiaries can be avoided, but you must act sooner rather than later. If you fall ill and require permanent care, or if you unfortunately lose mental capacity for any reason, it will be too late to protect your home and assets.

Act now!
Sadly, many people put off planning for the future until its too late, leaving children and loved ones devastated to realise that the situation could have been easily avoided. The sooner planning is put into effect, the more effectively we can help you ensure that your assets go to those you love ... not those you don't!

Do you have Savings?
While the family home is usually the most valuable asset, we can also help you to protect your savings. Speak to us today to find out the best way to protect your assets.

Protect your Home and your Savings from unnecessary, avoidable losses. Accord can help ensure your loved ones benefit as much as possible from your estate.

Act today and protect those you love
If you want to be certain that your assets will pass down your loved ones or children you'll need more than a basic Will.

Accord Legal Services Ltd will help you every step of the way.
For more information please contact...
Paul Palmer
0845 055 9415 or email;
paul.palmer@accordwills.co.uk

FLAIR DOOR CENTRE



5 Station Rd, Marston Green,
Birmingham B37 7AB

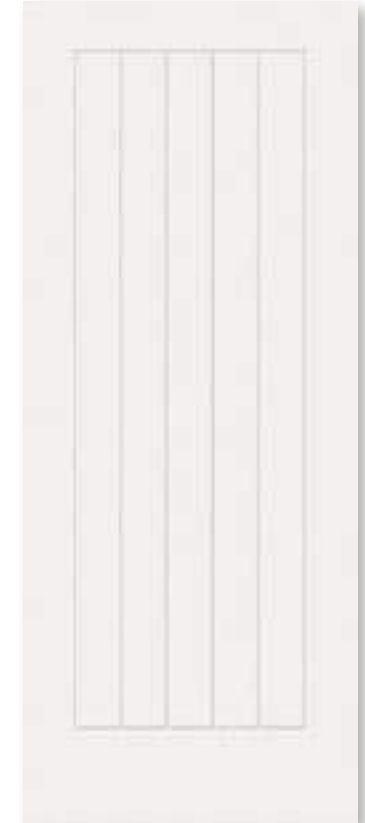
Telephone: 0121 779 2257

Checkatrade

OPENING TIMES
MONDAYS TO FRIDAY 9AM - 3PM
SATURDAY 9AM - 2PM
CLOSED SUNDAY



6/4 panel doors £90
30inch doors



Vertical 5 line Fitted for
£100 including handles
30inch doors



HOT DEAL
OAK UNFINISHED
FREYA

Supply £80
Fitted £145
30 inch doors

Other sizes available - Minimum 3 door order

WE ALSO SUPPLY AND FIT COMPOSITE DOORS - UPVC DOORS - REPLACEMENT GLASS PANELS - REPLACEMENT LOCKS FOR ALL DOORS.

BOOK NOW
FOR YOUR GUARANTEED
PRE CHRISTMAS FITTING

COLESHILL Windows And Doors Ltd



- ✓ Windows & Doors
- ✓ Composite Doors
- ✓ Conservatories
- ✓ Equinox Warm Roofs
- ✓ Roofline & GRP Roofs

OVER 20 YEARS EXPERIENCE

At Coleshill Windows & Doors Ltd we believe in doing business the right way, by putting you first. That means no hard sales push, fair prices and only the highest standards of work.

Tel: 01675 464 661
Mob: 07789 855655
www.coleshillwindows.co.uk

The local, family owned
business you can trust!



The Shabby Attic

The shabby Attic is now buying precious metal, we will take a look at anything you bring in and give you a fair and honest opinion and hopefully a cash offer on the spot!

We are interested in any of the following:

- Broken jewellery
- Old Coins
- old watches
- Silver Cutlery
- Silver Flatware
- Dental Gold
- Pocket Watches

Whether you have one item or a bundle, unsure what you have? No problem, we will take a look, free of charge.

Competitive prices paid, cash paid instantly or bank transfer.
Home visits Available

Have anything unusual or unique? bring it to us, we may buy it from you. We work closely with Dealers and collectors to get you the best price!!

You could be sitting on a fortune - you never know?

82 High Street, Coleshill B46 3AH Tel.07528964681



THE NEW COLESHILL BAR & GRILL

- We cater for large parties and events.
- We are taking bookings for Christmas
- 15% off all collection orders for December.



STATION ROAD, COLESHILL
BIRMINGHAM B46 1JZ

info@thecoleshillbarandgrill.com

Opening hours Sun to Thurs 12 to 10pm | Fri & Sat 12 to 11pm

TEL: 0167 546 3730 @thenewcoleshillbarandgrill



Hello from your local Slimming World groups



Welcome to October, the month of Halloween and at Slimming World were certainly enjoying all the healthy seasonal pumpkin and squashes on offer. In our groups there's always lots of help with money saving ideas and our newest budget friendly recipe book **Air Fryer & Friends** is going down a storm! This month we've brought you Ally's story. Ally is so grateful to her best friends who encouraged her to join their group, and with our 'Introduce a friend' (to your group) and earn yourself a free week offer now on until 23rd December it gives more time for our members to shout out about their success and be a friend to others who might need that initial support. So, if you know any Slimming World member ask them for an introduction and come along, there's always a warm welcome waiting. Wishing you a happy and healthy month ahead...
Toni x (07971 686 698)

Ally's Story



In the five years leading up to this moment, losing over 3.5 stone and being named Woman of the Year in my group, I'd been lower than I ever thought you could get. In 18 months, I'd lost my dad, got divorced and had huge financial turmoil. I didn't know how to cope mentally so I coped physically with emotional eating. I don't think I am alone in that, stress eating huge amounts of sugary or carb laden food and not even enjoying them because of the sadness and guilt that would take over every bite. I was the first to joke about myself to premeditate judgement, outwardly bubbly but inwardly hating. I was in plan-cancelling, mirror-avoiding, clothes-hiding denial. A constant overwhelming sense of despair, not knowing how to self-soothe or even simply where to turn.

I'd slowly started the steps of what my kids call my life glow-up. I'd got a beautiful new house, an exciting new job and mentally so much stronger however I was still incredibly overwhelmed about my weight and eating. My two best friends had been attending Slimming World Fordbridge Group for a while and started gently encouraging me to go along. My first day there in January this year turned out to be our consultant Jacquie's first day too. Fresh out of training Jacquie was ready to help her own members achieve their weight loss goals just like Slimming World had already helped her achieve her own, losing over 6 stone as a member before training to be a consultant. I remember us both being incredibly nervous at what we now see as the start of our journey together.

Jacquie is nothing short of incredible. She has created a completely safe space where we hold genuine joy at each other's achievements, be that a good loss or simply making good choices. Resources upon resources with emotionally intelligent support, the biggest part of me staying on track and truly enjoying the journey is our group. I've found the plans to not only be easy to follow but flexible and able to accommodate whatever life brings. Every week in group we share tips, ideas and recipes as well as learning ways of overcoming old habits that hold us back, like my emotional eating. Nine months later and three and a half stone down and the self-confidence is now

oozing out more and more each week. Re-finding my style and sense of self. It's the non-scale victories, like going down clothes sizes, or being able to climb the stairs without getting out of breath that are amazing! The fullness of hope and true friendships keep me returning and thoroughly enjoying this journey to the new life I am creating. I honestly feel so lucky that my two besties encouraged me to join slimming world. I am so proud to be a part of this group, so grateful that we sit here week in and week out giving each other the moral support as we do this for ourselves. Every single week we turn up and there's Jacquie, arms wide open with smiles and support in wild abandon. Group is always interesting with loads of support and resources to help us all. We celebrate together and support each other when we have challenges. The biggest key for me has been staying to group, I feel genuinely happy on a Thursday to be walking in. I love our group, it's where the magic happens.

By helping people to lose weight and live a healthier lifestyle, joining Slimming World can dramatically reduce a member's chances of developing cardiovascular disease

On average, our members lose a clinically significant 5% within the first 3 months which means that they already start seeing health benefits such as less joint pain, improved mobility, less breathlessness, better sleep and reduced blood pressure.

Members following Slimming World's Food Optimising healthy eating plan enjoy a diet of filling and satisfying everyday foods - including fruit, vegetables, eggs, poultry, lean meat, fish, beans, pulses, pasta, rice and potatoes.



Cheesy rice-stuffed squash

With gooey melted cheese and slow-cooked, lightly spiced butternut squash, this treat is perfect for autumn
Ready in 1 hr 40 mins Serves 4 | 6 Syns per serving
(Syn free if using cheese as Healthy Extra A)

Ingredients:

- 2 medium butternut squashes, halved and deseeded
- Low-calorie cooking spray
- 1 onion, finely chopped
- 2 garlic cloves, crushed
- 15 green cardamom pods, seeds removed and crushed (pods discarded)
- 1 tbsp cumin seeds
- 300g cherry tomatoes, larger ones halved
- 175g mix of dried basmati and wild rice (or long-grain and wild rice)
- 500ml hot vegetable stock
- 150g kale, woody stems discarded
- 160g reduced-fat mature Cheddar, grated
- Mixed leaf salad, to serve

Method

1. Preheat your oven to 200°C/fan 180°C/gas 6.
2. Put the squash halves, cut-sides up, on a large non-stick baking tray. Spray with low-calorie cooking spray and bake for 1 hour, or until the flesh is soft.
3. At the same time, spray a large, deep, non-stick frying pan (choose one you can put a lid on, as you'll need to cover it later) with low-calorie cooking spray and put it over a medium heat. Add the onion and cook for 5-6 minutes, stirring often, until it begins to soften. Add the garlic and cardamom and cumin seeds with a large splash of water. Increase the heat to medium-high and stir-fry for 1-2 minutes until fragrant.
4. Add the tomatoes, rice and stock. Bring to a simmer, then reduce the heat to medium-low, cover and cook for 10 minutes (you should see a little steam rising from the pan - if you don't, increase the heat slightly).
5. Drop the kale on top of the rice mixture, re-cover and cook for 10-12 minutes, until the kale is soft and the rice is just tender. Season lightly and set aside.
6. Remove the squash from the oven and increase the temperature to 220°C/fan 200°C/gas 7. Gently scoop out the flesh from the squash halves, leaving a 1cm border. Stir the flesh through the rice mixture with half the cheese, then fill each squash half with a quarter of the mixture. Divide over the remaining cheese and return to the oven for 15-20 minutes until the cheese is golden. Serve 1 squash half per person with the salad.



yes you can with Slimming World

Monday

- Castle Brom** - The Baptist Church, 5.30 & 7.00pm Claire - 07917867577
- Tile Cross** - St Peters Church, 4.00 & 5.30pm Nataley 07939 949136
- Yardley** - St Edburghas Church Hall, 9.00am, 3.30 & 5.30pm Jacqui 07814 675180

Tuesday

- Coleshill** - The Catholic Church (sacred Heart & St Teresa) 3.30pm, 5.00pm & 6.30pm Toni 07971686698
- Kingshurst** - Seeds Of Hope, St Barnabas CH, 5.00 & 6.30pm Diane 07432 123206
- Kitts Green** - Evangelical Church, 5.30pm Becki 07864 872816
- Shard End** - Aylesford Hall, 9.00am & 10.30am Donna 07516 726534

Wednesday

- Castle Brom** - Arden Hall, 9.30am Diane 07432 123206
- Castle Brom** - St Clements Church, 3.00, 4.30 & 6.00pm Nataley 07939 949136
- Marston Green** - The Parish Hall, 3.30, 5.30 & 7.00pm Jacqui 07814 675180
- Water Orton** - The Link, 5.30 & 7.00pm Jayne 07453 348184

Thursday

- Castle Vale** - St Cuthberts Church, 5.30pm, Richard 07733820994
- Chelmsley Wood** - The Fordbridge Centre (by Asda), 5.30pm, Jacque 07957133435
- Sheldon** - St Thomas More, 4.00, 5.30, 7.00pm, Jayne 07453 348184
- Smiths Wood** - SJB Centre, 5.00 & 6.30pm Nataley 07939 949136 **NEW TIME 9am**

Friday

- Chelmsley Wood** - The Family Tree, 9.00am Jayne 07453 348184
- NEW CONSULTANT Sheldon** - St Thomas More Church, 9.00am Claire 07917867577

Saturday

- Chelmsley Wood** - Three Trees Community Centre, 9.00am Michael 07957 510533
- Chelmsley Wood** - The Family Tree, 8.30 & 10.00am Jayne 07453 348184
- Castle Brom** - The Baptist Church, 8.00 & 9.30am to Donna 07516726534
- Bordesley Green** - St Pauls Church, 9.00am Maria 07974 805252
- Sheldon** - St Thomas More, 7.30 & 9.00am Jacqui 07814 675180

We are recruiting - contact Toni for details 07971686698
slimmingworld.co.uk



KINGSBURY GARAGE DOORS

YOUR LOCAL GARAGE DOOR SPECIALIST

ALL TYPES OF GARAGE DOORS & FRONT DOORS



We are a family run business that carry out repairs and new installations

Great Choice • Great Quality • Great Service

CALL US ON: 01827 236090

email: info@kingsburygaragedoors.co.uk



Castle Bromwich Singers
present

It's Christmas

6th, 7th and 8th December 2023
19:30 until 22:00

and
Saturday 9th December 2023
17:00 until 19:30

Arden Hall, Water Orton Road
B36 9PB

Tickets available from
TicketSource



Greg on
07951 562 907
David on
07824 313538
and on the door

Net Profits to:



Price £10.00, (£5.00 under 16)

www.castlebromwichsingers.org.uk

www.facebook.com/cbsingers

Major survey on police priorities and funding launches

Police and Crime Commissioner Philip Seccombe is asking people across Warwickshire about their priorities for policing for the year ahead and for their views on the Police Precept – the part of Council Tax which funds Warwickshire Police.



Philip Seccombe

The 'Your Police, Your Views' survey forms an important part of the budget setting process for policing for the next financial year. The responses gathered will help to inform how the budget is structured, to make sure Warwickshire Police continues to meet the needs of local people.

Just under half of the total budget for policing came through Council Tax in 2023/24, helping Warwickshire Police maintain its record number of 1,100 police officers, as well as funding a number of improvements to the service it delivers to the public, including:

- The introduction of a new policing model, featuring three geographical command centres in the North, South and East of the county, bringing together key areas of policing that are best delivered locally.
- New Patrol Investigations Teams with responsibility for investigating many of the crimes that do not meet the threshold for CID investigation but still negatively impact people's lives.
- Specialist teams to focus on high-risk crime such as domestic abuse, rape and serious sexual offences, human trafficking, online child sexual exploitation and digital media.
- Additional resources for call handing to improve the customer contact experience and reduce wait times.
- The provision of resolution centres where members of the public can speak face to face

with officers and staff, with longer opening times over 7 days each week at Nuneaton, Leamington, Rugby and Stratford.

In addition, Mr Seccombe has introduced three enhanced commissioned services helping victims of crime, including specialist support for those affected by sexual abuse and violence and child exploitation. A further three new commissioned services provide support for the victims of modern slavery and human trafficking and those affected by fatal and serious injury collisions on our roads, alongside an expanded restorative justice service.

Warwickshire Police and Crime Commissioner Philip Seccombe said: "The support of the public through the Police Precept has enabled these improvements to be delivered over the last year, allowing Warwickshire Police to maintain record police officer numbers and make the best use of its expanded workforce to improve services for the public and give greater support to victims of crime.

"I'm keen for Warwickshire Police to continue to improve the service it provides, while remaining focused on the things that matter most to local people. That's why I have launched the 'Your Police, Your Views' survey to get feedback on what people think policing should focus on and whether that has changed in the past year.

"The results will help me as I begin to develop a budget for policing for the year ahead. This involves a delicate balance of sometimes competing priorities, which is why people's views are so important. I know that pressures remain on everyone's finances, with inflation remaining high and other increases in the costs of goods and services meaning the money we have available may not stretch as far in the year ahead.

"That's why I need to get a clear idea of people's views on which priorities are most important to help establish what amount of funding may be needed, before balancing that against what is fair and affordable. Every response to the survey therefore matters and I am keen for as many people in Warwickshire as possible to give their feedback."

The 'Your Police, Your Views' survey will run through to Friday 22 December and can be found online at www.warwickshire-pcc.gov.uk/yourviews. Paper copies of the survey are also available on request by contacting the Commissioner's offices in Warwick on 01926 733523.

You can find more information on how Warwickshire Police is currently funded and how the Police Precept is used here: www.warwickshire-pcc.gov.uk/counciltax

Christmas Craft Fair

Over 30 stalls to visit including pet goodies, jewellery, wood carvings & more, with Christmas lunch in the Tea Rooms!



Pets are welcome

Live demonstrations

Visit the brand-new
craft centre

Whitacre Hall Farm, Nether Whitacre, B46 2PD
December 2nd-3rd 10:00-16:00



Saqib Bhatti MBE, MP for Meriden

November Update

Following a successful lobbying campaign by myself and the Solihull Metropolitan Borough Council (SMBC), the Department of Education has allocated £1 million for the opening of four family hubs in the Solihull Borough. The hubs will be located in Kingshurst, Smith's Wood, Chelmsley Wood and Elmdon and will be placed on sites with good transport links to ensure they are easily accessible to all residents. The family hubs will also offer virtual appointments and online group sessions to make sure as many people as possible have access to the services on offer.

The aim of the family hubs is to offer all children and families the best start in life by providing a range of activities for the whole family in one convenient centre. The services will be available to families with young children, to young people up to the age of 19 and to young people with additional needs up to the age of 25. The family hubs will offer a range of different services, including health visitor appointments, midwife appointments, help for people with special educational needs, youth clubs, play groups, and experts in debt, mental health issues and addiction.

The addition of the family hubs to our constituency will bring much-needed services to our most underserved communities, it is imperative that families have access to support that can be used in a preventative manner to engage with SMBC at an earlier stage. I am so pleased that families within our community will benefit from the family hubs and that the government has not only acknowledged our community's needs but has provided funding for the project.

In September I had the pleasure of attending the opening of the Gigahub at the NEC alongside Andy Street, Mayor of the West Midlands and the Rt Hon Jeremy Hunt, Chancellor of the Exchequer. The Gigahub is a new electric vehicle charging site supplying 180 charge points, making it the largest EV charging site in the UK and marking a significant boost for Britain's electric car charging network. The Gigahub has been strategically placed at the NEC so that it can be accessed from the M42, M46, and A45. The electric vehicle charging site is the biggest private investment in electric charging in the UK and will make having electric vehicles more accessible for people across the constituency.

The opening of the Gigahub into our community reflects the investment that is going into supporting new technologies and creating jobs in our community. I am thrilled that our constituency will be able to benefit from the opening of this electric vehicle charging site and that we continue to lead the way on the journey to net zero.

Finally, I want to wish you and your loved ones well. As ever, my office remains open and we are conducting surgery appointments, so do not hesitate to book a slot. My contact details can be found below:

saqib.bhatti@parliament.uk 0121 711 7029

ADVERTISE YOUR BUSINESS HERE

For more information on how to advertise in any of our titles please call:

0121 749 7502
/ 07805 430191
or email:

editor.postgroup@outlook.com



Commissioner invites community safety projects to bid for share of £300,000 grant funding



Projects and initiatives which help to prevent and deter crime and anti-social behaviour or make a contribution to road safety in Warwickshire are being invited to bid for a slice of grant funding by the county's Police and Crime Commissioner, Philip Seccombe.

The Commissioner's Grants Scheme is an annual award offered by Mr Seccombe which seeks to support initiatives which support his overall aims of reducing crime, supporting victims and making communities safer. For the 2024/25 grants awards, organisations across the county are being invited to apply for funding of up to £15,000 for projects or initiatives which support the Police and Crime Plan's objectives and have the overarching themes of:

Prevention: Targeting the causes of criminality and/or anti-social behaviour in our communities and on our roads, seeking to break the generational cycle of offending to prevent it from occurring in the first place.

and/or **Diversion:** Supporting individuals who have already begun a journey of perpetrating crime and/or anti-social behaviour in our communities or on our roads, but who, armed with the right knowledge, understanding and commitment, can be diverted from this path towards a brighter future.

Opening the application process, Mr Seccombe said: "My grants fund is a vital way of supporting initiatives which help to support my ambition to reduce crime, support victims and make communities safer. This year I was able to award just under £300,000 of funding to a wide range of projects and I hope to be able to do similar again for 2024/25.

"By using the theme of prevention and diversion, I hope to see applications from a wide range of community groups, charities and other organisations with innovative projects that can make a real difference to communities and victims of crime, as well as those that prevent offences from happening in the first place. I also want to see applications being put forward that can make a real difference in making our roads safer, helping reduce death and serious injuries.

"I'm urging anyone who thinks they have a suitable project that can benefit from funding up to £15,000 to go online and apply before the November 10 deadline." Projects funded by the PCC's office under the grants scheme must be delivered within the 2024/25 financial year. Organisations can submit up to two bids for funding, with each application evaluated separately on its own merits.

The closing date for applications is midnight on November 10, 2023. For full details about the Commissioner's Grants Scheme and how to apply, visit: www.warwickshire-pcc.gov.uk/key-information/commissioners-grants/



Reader travel

CHRISTMAS in Bournemouth



Departing Sat 23 Dec '23

Celebrate Christmas in the traditional seaside resort of Bournemouth, featuring a lovely lunch with all the trimmings! We also enjoy included excursions, with Christmas Eve spent amid the magical landscapes of the New Forest and a Boxing Day trip to Salisbury.

Your break includes

- ✓ Return coach travel from Solihull
- ✓ 4 nights at a selected 3 or 4-star hotel in Bournemouth with dinner & breakfast. Christmas Day includes breakfast, a traditional Christmas lunch and a light evening buffet
- ✓ Welcome drink
- ✓ After-dinner tea & coffee
- ✓ Light entertainment every evening
- ✓ Excursions to the New Forest (Lynton & Lyndhurst) & Salisbury

5 Days by Coach *only* £369

Single Supplement £100

SCARBOROUGH Twixmas Special



Departing Thu 28 Dec '23

Make the most of the festive season with this fantastic Twixmas break to Scarborough! With a visit to York included, there's plenty of time to shop and see the famous historic architecture and cobbled streets dotted with quirky shops and quaint tea rooms.

Your break includes

- ✓ Return coach travel from Solihull
- ✓ 2 nights at the 3-star Grand Hotel, Scarborough with dinner & breakfast
- ✓ 2 for 1 bar (6pm-9pm) on selected drinks
- ✓ Light entertainment every evening
- ✓ Excursion to York
- ✓ Free time in Scarborough

3 Days by Coach *only* £159

Single Supplement £50
Operated by Just Go Holidays Ltd. Coach package holidays and short breaks are subject to Just Go! Holidays terms and conditions. Your booking is protected by Bonded Coach Holidays (BCH) and the Association of Bonded Travel Organisers Trust Limited (ABTOT); this is a government approved consumer protection scheme. Tours offered subject to availability and government guidelines. Errors and omissions excepted. Prices per person, based on two people sharing a double/twin room. Calls to 033 numbers are free within inclusive minutes packages otherwise standard rates apply. Prices are correct at the time of printing and will be honoured for bookings made on or before 7 days after publication.

For more information, or to book, please call

03332 341 856 Quote PGM

or visit us online at justgoholidays.com/PGM

033 numbers are free within inclusive minutes packages otherwise standard rates apply.



UK BREAKS By Coach from Solihull

Reader travel

WINCHESTER Christmas Market & Windsor



Departing Fri 15 Dec '23

Join us on this getaway to delight in Winchester's merry atmosphere where we get our Christmas shopping started early at the annual Christmas market. We also enjoy a visit to the historical city of Windsor to soak up the spirit of the Christmas season.

Your break includes

- ✓ Return coach travel from Solihull
- ✓ 2 nights at the 3-star Basingstoke Country Hotel & Spa with dinner & breakfast
- ✓ Excursion to Salisbury & Winchester Christmas Market
- ✓ En-route visit to Windsor

3 Days by Coach *only* £179

Single Supplement £50

YORK ST NICHOLAS FAYRE & Leeds Christmas Shopper



Departing Sat 16 Dec '23

York's St Nicholas Fayre is the ultimate Christmas experience with over 100 traditional chalet stalls selling gift ideas, from local produce to traditional crafts. We also visit Leeds, a Christmas shopping haven with twinkling fairy lights and seasonal cheer.

Your break includes

- ✓ Return coach travel from Solihull
- ✓ Overnight stay at a selected 3 or 4-star hotel with breakfast
- ✓ Visits to York St Nicholas Fayre & Leeds

2 Days by Coach *only* £119

Single Supplement £35

ANDRÉ RIEU Live in Birmingham



Departing Fri 17 May '24

The classical-music phenomenon André Rieu returns to the UK with a sensational new show, including a date at Birmingham's Resorts World Arena! Accompanied by his 60-piece Johann Strauss Orchestra, this evening promises to be filled with thrilling music.

Your break includes

- ✓ Return coach travel from Solihull & Sutton Coldfield
- ✓ Overnight stay at a selected hotel (JG3 or JG4 rating) with breakfast
- ✓ Ticket to André Rieu concert at the Resorts World Arena, Birmingham
- ✓ Return coach transfers from the hotel to the Resorts World Arena
- ✓ En-route visit to a place of interest

Ticket upgrades available

2 Days by Coach *only* £219

Single Supplement £35

For more information, or to book, please call

03332 341 856 Quote PGM

033 numbers are free within inclusive minutes packages otherwise standard rates apply.

or visit us online at

justgoholidays.com/PGM



Operated by Just Go Holidays Ltd. Coach package holidays and short breaks are subject to Just Go! Holidays terms and conditions. Your booking is protected by Bonded Coach Holidays (BCH) and the Association of Bonded Travel Organisers Trust Limited (ABTOT); this is a government approved consumer protection scheme. Tours offered subject to availability and government guidelines. Errors and omissions excepted. Prices per person, based on two people sharing a double/twin room. Calls to 033 numbers are free within inclusive minutes packages otherwise standard rates apply. Prices are correct at the time of printing and will be honoured for bookings made on or before 7 days after publication.



News from St Clement of Alexandria Green Lane, Castle Bromwich (known locally as St Clements Church)



Autumn is the season that teaches us all that change can be beautiful and to Thank God for his many blessings.

So before we jump too far ahead, on Saturday 9th September St Clements held its Annual Garden Party Afternoon Tea and as it was rather warm for the time of year, instead of being outside we had to make do and be inside (we could have done with this, when we held our Summer Fayre) nearly 46 sat down to tea and then under the guidance of Janet Smith a member of St Clements and 4th Castle Bromwich Brownies' Assistant Leader we all made Friendship Bracelets surprising what you can do with 3 strands of wool. Proceeds from the sale of tickets were sent to Guide Dogs for the Blind one of the charities we have supported this year.



On 2nd October we came together for the Institution and Collation of The Revd Fiona Harrison-Smith, as Rector of St Mary and St Margaret and Vicar of St Clements Church, by the Rt Revd James Langstaff, Honorary Assistant Bishop of the Church of England, Birmingham and the Induction by The Venerable Gordon Steele, Auxiliary Archdeacon. Area Dean Louise Shaw introduced the service and welcomed

everyone. After a long interregnum for both churches we all welcomed Fiona who we are sure will "hit the ground running" Watch out for the flowing cloak!!



St Clements held its annual MacMillan Coffee morning on the 7th October 2023 homemade cakes and some bought cakes, the choice was endless. What to choose was the Big question? With a refreshing cup of tea or coffee and a friendly chat, what better place to spend a morning than supporting this amazing charity which touches so many lives. Oh - nearly forgot there was also a raffle just in case any money was left in the purse!! All monies collected will be sent onto MacMillan - thank you all for your support on the day.

More diary dates :

Christmas Fayre Saturday 2nd December
Festive Tea Saturday 16th December

4th Castle Bromwich Brownie Pack

At the start of the new school term the Leaders were pleased to welcome new members into our Pack as they have now reached the age of seven years. Joining Brownies is becoming a very popular activity as we now have a number of six year olds on our waiting list eager to join us after their 7th birthday.

Over the Summer break, apart from having

a well-earned rest on a Monday night, the Leaders have planned an exciting programme of events for the Autumn season.

In particular, our weekend pack holiday at the end of October proves to be very popular for the Leaders as it was booked over the weekend when the clocks go back, and we get a very welcome extra hour in bed on the Sunday morning! During that weekend our girls enjoy living with their Brownie family, and taking part in many outdoor activities including climbing, abseiling, archery and a good singsong around the campfire.

Guiding in Castle Bromwich continues to give girls the opportunity to gain skills in so many areas and to enjoy holidays as a group. During their time with us they become more confident and able to give their opinions on a great many subjects while we sit together. Our aim is to make many happy memories which hopefully will stay with them for the whole of their lives! As always, we thank our parents for the welcome support they give us, and especially to St. Clement's Church for the wonderful facilities they provide to us. If you are interested in your daughter (who should be aged between seven and nine) joining us, then please go to the Girlguiding UK website under the Parents Registration page, and select 4th Castle Bromwich Brownie Pack to fill in your daughter's details. We will then get an email from Girlguiding UK and we will be happy to contact you directly.

Allotment update for Autumn

With the summer growing season coming to an end, we have finished harvesting most of the warmer season crops such as tomatoes, beans and sweetcorn. They were

certainly delicious albeit less in number than last year due to the strange weather we have been having this year. We still have some winter vegetables growing such as kale, cabbage and leeks and these are growing well and will be harvested over the autumn and winter period. The grapes that we were growing in the greenhouse tasted amazing and we're looking forward to next year's harvest! We will continue to work on the allotment over the autumn and winter, tending to the remaining vegetables, pruning some of the fruit trees and bushes and doing plenty of weeding! We will also be potting up the strawberry runners that have come from our existing strawberry plants as strawberry plants only produce for about three years so need replacing. It's been an enjoyable but challenging growing year!

Remembrance Sunday on the 12th November 2023, gives us all the opportunity to come together to say thank you and to remember those that fought and gave their lives and still do today for the freedoms we now all enjoy. The red poppy is a symbol of both Remembrance and hope for a peaceful future and is worn as a show of support for the Armed Forces community.

If you want to know more about our Services or Groups you can get in touch here:

Phone: 0121 748 5550

Church Website:
www.stclementschurchcb.co.uk

Facebook: www.facebook.com/stclementschurchcastlebromwich

Email: office@stclementschurchcb.co.uk



Cllr Martin McCarthy, Castle Bromwich Ward (Solihull MBC)

November Update

Autumn is truly with us now and as the leaves continue to fall for and are cleared up for winter, it is good to remember that our Green Bins now continue to be emptied all year round making it easier for us to dispose of these.

Road safety

Traffic speeds are being surveyed along Hall road we look forward to the results, this may deter some visitors to the area from showing off powerful cars in the short term, further action may be needed to deter this dangerous activity.

Pavement encroachment parking continues to be a problem for mobility users in the Hurst Lane North shops area, we have reviewed this with SMBC highways officers.

Wildlife ways

The delayed cutting of the Wildlife way areas should soon be nearing completion.

We continue to push for further action on these areas to deliver a more cared for appearance through the year. SMBC contractors have cut back the epicormic growth at the base of some of our verge and open space trees following local resident's requests.

Lanchester park update

The missing hoop in the Basketball court has now been replaced, it is good to see some of our youngsters using the court once again.

Remedial pavement work is expected during the month, this should take place on Lanchester way between Green Lane and the Park to improve the condition of the surface.

We continue to push for work on the footpath that links the park to Park Hall Academy, this is to provide a safer route to school and alleviate traffic problems seen at peak times in this area.

Fly Tipping

Illegal fly tipping of Domestic appliances continues to be a concern, SMBC action is being pursued.

Fly tipping can be reported to SMBC using the on line 'Report it Site' or by Telephone to connect.

Regular Councillor Surgery at Castle Bromwich Library.

My next monthly surgery is scheduled for Monday the 6th of November, this takes place at the Library at 14:00, no appointment is required, please email, or call me if anything urgent comes up in the meantime.

Our emails are martin.mccarthy@solihull.gov.uk alan.feeney@solihull.gov.uk and leslie.kaye@solihull.gov.uk

READ OUR PAPERS ON THE GO
www.postgroupmidlands.com

POST GROUP MIDLANDS LTD

ADVERTISE YOUR BUSINESS HERE
For more information on how to advertise in any of our titles please call:
0121 749 7502 / 07805 430191 or email: editor.postgroup@outlook.com

The Only Family Owned Funeral Directors in Castle Bromwich

Hickton Family Funeral Directors
Trevor E.W. Hickton Ltd

MEMBER S A I F INDEPENDENT FUNERAL DIRECTORS

24 Hour Service in all areas
Home Visits & Arrangements
Payment Plans
DWP Social Help
Simple Low Cost Funeral Options
Private Chapels of Rest
Modern & Classic Vehicles
Professionally Trained Staff
Horse Drawn & Alternative Hearses
Pre-Paid Funeral Plans

About Us
Established in the Black Country in 1909, the Hickton family have been serving the community through four generations. The business currently in its 3rd and 4th generation of ownership, identified the need for a new modern independent funeral director to serve the Birmingham and Solihull areas. Many of the long established funeral homes in the local area have been sold to much larger corporations over the past 15 years and have no family members left involved in the business. W.H. Painter, for example, are owned by Funeral Partners, a large nationwide corporate company. We are the only family owned funeral director in the area now. With our family ownership we feel in a position to give a much more caring service when called upon, compared to large corporate companies. We also feel we can be much more cost effective in comparison to the corporate funeral homes.

The Basic Funeral Package £1400.00*
Including - Professional services, transfer from place of death, care of loved one, hearse, simple coffin, funeral director, bearers.

The Traditional Clent Funeral Package £2350.00*
Including - Professional services, transfer of your loved one from place of death, preparation and viewing of loved one in a traditional coffin, care of loved one, hearse, one limousine, funeral director & bearers. 4ft floral coffin spray, 40 order of service booklets, ashes scatter tube, donations box and 6 bereavement support sessions.

*cost excludes cremation, burial, doctors or minister's fees. All costs are correct up until April 2021

Golden Charter
Smart Planning for Later Life

320 Bradford Road, Castle Bromwich B36 9AD
Opposite Toby Carvery (The Bradford Arms) 24 Hour: 0121 747 7900
www.TEWHickton.co.uk

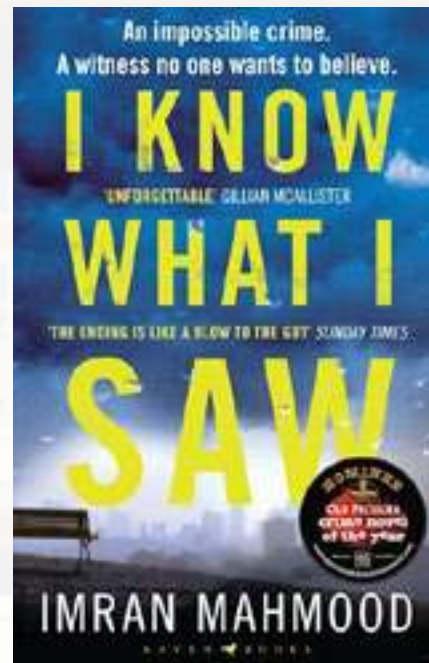
Castle Bromwich Library Book Club

I know what I saw by Imran Mahmood

He smothered her, pressing his hands on her face. The police don't believe me, they say it's impossible - but I know what I saw. This is Xander Shute: once a wealthy banker, now living on the streets. As he shelters for the night in an empty Mayfair flat, he hears its occupants returning home, and scrambles to hide as the couple argue. Trapped in his hiding place, he soon finds himself witnessing a vicious murder. But who was the dead woman, who the police later tell him can't have been there? And why is the man Xander saw her with evading justice? As Xander searches for answers, his memory of the crime comes under scrutiny, forcing him to confront his long-buried past and the stories he's told about himself. How much he is willing to risk to understand the brutal truth?

If you like psychological thrillers which are a bit different to the rest this is the book for you. Dark and gritty with clever twists. I was completely gripped by this book from the beginning - a real page turner!

Review by Castle Bromwich Library member



The dead of winter by Stuart MacBride

It was supposed to be an easy job. All Detective Constable Edward Reekie had to do was pick up a dying prisoner from HMP Grampian and deliver him somewhere to live out his last few months in peace. From the outside, Glenfarach looks like a quaint, sleepy, snow-dusted village, nestled deep in the heart of Cairngorms National Park, but things aren't what they seem. The place is thick with security cameras and there's a strict nine o'clock curfew, because Glenfarach is the final sanctuary for people who've served their sentences but can't be safely released into the general population. Edward's new boss, DI Montgomery-Porter, insists they head back to Aberdeen before the approaching blizzards shut everything down, but when an ex-cop-turned-gangster is discovered tortured to death in his bungalow, someone needs to take charge.

nother great read from this excellent author! The storyline is unique and instantly draws you in. It is a tense, atmospheric, well written and twisted read. I loved it.

Review by Castle Bromwich Library member



You never said goodbye by Luca Veste

Sam Cooper has a happy life: a good job, a blossoming relationship. Yet, there's something he can never forget - the image seared into his mind of his mother, Laurie, dying when he was a child. His father allowed his grief to tear them apart and Sam hasn't seen him in years. Until an unexpected call from Firwood hospital, asking Sam to come home, puts in motion a chain of devastating events. On his deathbed, Sam's father makes a shocking confession. Who was Laurie Cooper? It's clear that everything Sam thought he knew about his mother was wrong. And now he's determined to find out exactly what she did and why - whatever the cost. What happens if you discover you've been lied to by your own family for 25 years? Sam Cooper is about to find out.

A face-paced thriller with lots of mis-direction and action which doesn't stop until the last page. The whole book is like a roller-coaster ride - not to be missed!

Review by Castle Bromwich Library member



We are all the same in the dark by Julia Heaberlin

The discovery of a girl abandoned by the side of the road threatens to unearth the long-buried secrets of a Texas town's legendary cold case. Ten years ago Trumanell Branson disappeared, the only clue she leaves behind a bloody handprint. Her pretty face still hangs like a watchful queen from the posters on the walls of the town's church, police station and high school. They all promise the same same thing: We Will Find You. Meanwhile, her brother, Wyatt, lives as a pariah in the old family house, cleared of any involvement by the police but tried and sentenced in the court of public opinion and now in a sensational TV documentary about the crime. So, when Wyatt finds a lost girl dumped in a field of dandelions, he believes she is a sign, someone to lead him to his sister and finally clear his name. Instead, she leads him to young police officer Odette Tucker.

This is a creepy and nerve bending mystery which is full of suspense and intrigue from the start. One of the best thrillers I have read.

Review by Castle Bromwich Library member



YARDLEY MEMORIALS

We pride ourselves on personal service and customer care

Yardley memorials offers a personal, sympathetic and professional service when you are faced with the painful and emotional task of choosing a suitable memorial for your loved one.



Call for a free brochure
Tel 0121 706 2473



200 letters
free on new
headstones



Email peter@yardleymemorials.co.uk for any other inquiries

453 Stockfield Road, South Yardley, Birmingham, B25 8JH

Open Monday to Friday 10am-4pm,
Saturday 12pm-4pm | By Appointment Only

Yardley Memorials are also based
inside Widney Manor Cemetery
for new memorials and flowers



OPEN 6 DAYS A WEEK

0121 789 6549

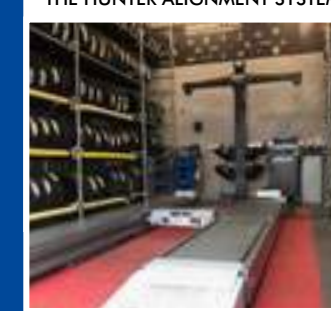
FAST, RELIABLE, PROFESSIONAL
SERVICE WITH NO HIDDEN EXTRAS

- 2000+ TYRES IN STOCK
- BRAKES SUPPLY + FIT (CAR & VAN)
- HUNTER 4 WHEEL ALIGNMENT
- EST OVER 18 YEARS
- PUNCTURE REPAIRS

Flaxley Tyres
FOR ALL YOUR TYRE NEEDS



Flaxley Alignment Centre
WE OFFER A FREE CHECK ON
THE HUNTER ALIGNMENT SYSTEM



flaxleytyres

www.flaxleytyres.co.uk

Unit 1, Imex Business Park, Flaxley Road, Stechford B33 9AL



Scott Bevan History Column: Roman brooch

This month's article is all about a Roman brooch that I was lucky enough to find several years ago. The brooch which inspired an idea. An idea that grew into a project. And finally a project that culminated into something truly amazing.



Like all good stories though, first I need take you back to the very beginning. It was a mild autumn day in 2019 & I was detecting a field on my friend's farm. The field had produced Roman items previously, so I was very hopeful that there might be another Roman brooch or coin there for me to find. And sure enough, my luck continued! I happened along another beautiful Roman brooch. I immediately noticed that this brooch was entirely different to the others that I'd discovered. Its shape was unique compared to anything else that I'd found before and the remnants of the enamel, the orange coloured enamel especially, was absolutely striking. I was told that it's what's known as a continental plate brooch.

Originally I recorded the brooch with my finds liaison officer via email, but I then handed it in to my FLO at the museum at the first available opportunity so she could look at it in more detail. These brooches aren't common finds in the area in which I found it and as such, it was recorded as a 'find of note' and as having 'county/local importance'. But I wanted to know as much as I possibly could about the brooch & so I began researching about it myself. The brooch was recorded as being produced sometime between the years 100ad and 300ad. But why is it called a continental plate brooch? I assumed that it meant the brooch was made on the continent before being brought to Britain. My friend explained that this may not have been the case. These plate brooches were thought to have originated in Gaul & Germania, but the more research that's done on them, the more likely it's thought that they may have been produced here in Britain influenced by those continental styles. Scholars in the past thought the ancient Britons

incapable of making such brooches, however, studies now indicate that those living in Britannia certainly had the skills & techniques to produce this style of brooch.

I also wanted to know how it would've originally looked. The brooch is absolutely beautiful, but the plough & 2,000 years of it being exposed to the elements and it rolling around in the earth have taken their toll. My finds liaison officer recorded the brooch as being about 90% complete and I really, really wanted to know how it would've originally looked. And so I had an idea. I wanted to look into the possibility of having a reproduction made to sit alongside the original. But if I was to go ahead with any kind of reproduction, I wanted it to be as accurate as it possibly could be. I didn't want to cut any corners & that meant that I needed to know as much about the brooch as I possibly could. So I started making enquiries. I was told that the leading expert on Roman brooches found in Britain, is a lady named Dr Justine Bayley. So I found an email address for Dr Bayley, sent her some photographs of my brooch & explained that I was planning to have a reproduction made, hoping that I'd get a response. Luckily for me, Dr Bayley replied to my email & gave me a plethora of information, including details about the enamels that would have been used, the make up of the metal content of the brooch itself & a diagram of an identical brooch excavated at Gorbambury in St Albans. The brooch excavated at Gorbambury in St Albans gave us the blueprint for the original design. On the brooch that I discovered, the finial pieces had long since broken away and the metal has eroded quite significantly, but now, thanks to Dr Bayley in particular, I had enough information to make a start on producing an exact replica. Now I just needed to find a skilled jeweller to make the brooch for me. The first person that I contacted who agreed to help me was going to use computer aided design to replicate the brooch, but unfortunately circumstances conspired to halt the project before it had even begun. However, it turned out to be a blessing in disguise, because I then had to look to see if I could find another master jeweller to take on the project for me, and that's when I came across contact details for the lovely Cassie at the School of Master Jewellers in Birmingham's jewellery quarter. I visited Cassie & handed over both the brooch that I'd discovered and all of the information that I'd accrued researching how the brooch would've looked originally. Luckily for me, Cassie was more than happy to take on the project. Cassie's approach to making the reproduction brooch was a much more traditional one. CAD wasn't needed. Cassie used the measurements &

details from the brooch that I'd found, along with the diagram and information that Dr Bayley had provided me with, to create an exact replica in wax.

Cassie kept me up to date with her progress along every step of the way, supplying me with photographs of the wax model & allowing me to ask any questions that I might have had. Watching the brooch gradually appear from a rectangular block of green wax was spine tingling. Originally we'd estimated the brooch to be slightly smaller in length than it actually must've been. When Cassie came to plot out the triangular enamelled panels on either end of the brooch, they in turn dictated how long the brooch would really have been and so Cassie added extra wax to the ends to lengthen the model. Once the wax replica was complete, Cassie sent me some photos of the finished article just to make sure that I was happy with it. A mould was then created and it was sent off to the casters for the brooch to be made. The next update from Cassie were pictures of the cast brooch placed next to the original. When I'd originally thought about beginning this project, I'd tried to imagine how the brooch would've looked. It's size, it's colour, it's beauty. It was better than anything that I'd ever imagined. Cassie continued to add fine details to the brooch, building it up step by step. And each step was magnificent. Watching this work of art unfold before my very eyes was amazing. And the skill, time and effort that Cassie was putting in to produce the brooch was unbelievable. The next step was arguably going to be the most crucial. The enamelling. The triangular panels needed to be added and then the colours had to be matched as close as possible to the original colours. The triangular panels needed to match the precise dimensions of the original brooch. Once again, Cassie sent me photographs of the finished work. We knew the colouring of the enamel from both the remnants left behind on the actual brooch and from the information provided by Dr Bayley, but Cassie's attention to detail was super. The next step was absolutely crucial and the last piece of the puzzle, so to speak. I wasn't prepared for what I was about to see. A project four years in the making & many an hour wondering how this brooch would've originally looked had brought me to this very moment. And it did not disappoint. When a detectorist like myself is lucky enough to find an artefact such as this one, worn, weathered and dulled by time & the elements, it can often be difficult to imagine just how vibrant and colourful it would once have been. But this remarkable reproduction just goes to show that the Romans, as did many other ancient people, had access to just as much 'bling' as we do today



Reproduction process

Heart of England Singers Christmas Concert Saturday 9th December, 2023

The Heart of England Singers are making a welcome return after many years to the beautiful church of ss. Peter and Paul, Water Orton to stage their annual Christmas Concert this year under the expert guidance of their new conductor Michelle Norton.



Michelle Norton

Michelle worked with a number of Salvation Army choirs and Community choirs in and around the Home Counties for the past 40 years, and in 2019 under her leadership the Dagnall Community Choir became award winners in the Milton Keynes Music Festival. She has now moved to Leicestershire where she took up the post of the MD

for Hinckley Choral Union in September 2021, a job that she hopes will continue for many years to come. She now adds Heart of England Singers to her portfolio and the choir are delighted to introduce her to their audience at the coming festive season.

The accompanist is Ruth Low.

The choir will perform a number of seasonal pieces including "On Christmas Night" by Bob Chilcott. Bob was a member of the very popular Kings Singers from 1985 to 1997 and has been composing numerous pieces for choral work ever since. He is Principal guest conductor for the

BBC Singers and also is currently the conductor for the Birmingham University Singers.

In addition to this lovely piece the choir will perform:-

- In Dulci Jubilo
- The Shepherds Farewell
- The Three Kings
- O Little One So Sweet
- Carols from around the counties incl;_
- The Coventry Carol
- The Gloucestershire Carol
- The Sussex Carol
- The audience will have their chance to get into the Christmas Spirit by joining in with:-
- Silent Night
- O Little Town of Bethlehem
- Hark The Herald Angels Sing

The finale will be a rousing rendition of "Merry Christmas" with the whole evening being rounded off by seasonal refreshments in the Robert Lloyd Room of the church.

There is adequate parking at both The Link village hall, just a few yards away and in the village car park which is free in the evening. Tickets are just £12 each (£6 for under 16's from www.ticketsource.co.uk/The-heart-of-england-singers or on the door.



Heart of England Singers
 Conductor Michelle Norton
 Accompanist Ruth Low

Christmas Concert

Featuring
 'On Christmas Night'
 By Bob Chilcott
 and Christmas Carols
 with some audience participation

7.30pm, 9th December, 2023
St. Peter and St. Paul's Church
Water Orton
B46 1QT

Tickets £12 (£6 for under 16's) incl. festive refreshments from hoesticketmanager@gmail.com through Ticket Source at www.ticketsource.co.uk/The-heart-of-england-singers from choir members and on the door

Castle Bromwich u3a

This month Castle Bromwich u3a were delighted to welcome Nick Martin to their meeting. He is a professional wildlife photographer and he kept us all entertained and engaged with a wonderful selection of his favourite animal photographs.

We all thoroughly enjoyed his presentation as he showed us some fantastic photographs of British wildlife.



If you would like to join our group we meet on the last Wednesday of the month at Arden Hall B36 9PB at 1.30pm. It's just £2 each visit for your first three visits.

Look forward to seeing you there.

Yoga & Qigong classes

Weekly at St. Mary & St. Margaret's church hall, Castle Bromwich

Contact Denise
 07454 708646

www.smallworldyoga.co.uk

Creative flow Yoga
 Monday 7pm
 Gentle Hatha Yoga
 Friday 2.45pm
 Yoga movement, breathing and relaxation.

Qigong
 Tuesday 12.30pm
 Gentle movement including Taichi, meditation, relaxation. Can be practiced from a chair.



Castle Bromwich Parish Church – After the Conquest

By David L Adams

It has been said that I am making the story of the development of our church too complicated.

I am really trying to clarify, in my own mind, the process through which this area has gone to bring it from the virtually uninhabited forest edge it once was, to the “near suburb” that it has become.

I want to make sure that I don't miss any significant dates. William I, Duke of Normandy and King of England was a man of strong resolve and in the twenty years after the Conquest, he brought great change to our country.

Wody Bramewice chapel, in whatever form it may then have been, was a daughter church of Aston, then known as Estone (East Town) and had long been in the lands of Edwin, Saxon Earl of Mercia.

In 1070 Edwin joined others in abortive revolt and lost both his lands and his life.

Almost all Saxon magnates were “discontinued” at this time and by 1076 all land south of the Tyne was divided between 600 or so tenants-in-chief (of the King) and by 1086 less than one per cent remained in Saxon hands.

As previously mentioned, Aston and hence Wody Bramewice, then came into the ownership of Ansculf de Picquigny who was based at Dudley castle.

By 1086 it had passed to his son, William Fitz Ansculf, but the King, faced with the possibility of a Danish invasion calling for costly defensive measures, needed to assess the potential for taxation, “the Domesday Survey”.

He planned to enquire in every shire what due he ought to have from each manor and, although it was an exercise of great magnitude, it was the King's will that the work should be completed within the year. Inevitably with such a complicated endeavour, not all went well, and Wody Bramewice was one of the manors that became misplaced, Northamptonshire instead of Warwickshire, where it was recorded that “Ralph holds 3 hides from William (FitzAnsculf)” Who was “Ralph” and where he lived is not known, perhaps, the timber stockaded “look out” that I mentioned in the previous article?

William I died in Normandy in 1087 and his legacy was divided, with Normandy going to Robert, the elder of three brothers while England passed to William II, known as “Rufus”.



William “Rufus” was not a popular King and his youngest brother, Henry, may have engineered his death in 1100. As Henry I, he ruled England until 1135 in relative peace.

During this time, the manor of Dudley and with it Aston, passed to the de Pagnell family when Beatrice, the daughter of William Fitz Ansculf married Fulke de Pagnell. She founded Tickford Priory near Newport Pagnell.

In 1138 their son, Ralph, held Dudley Castle for the Empress Matilda, daughter of Henry I, in her struggle against King Stephen, the grandson of William I.

He prevailed and ruled until 1154 when Henry II, the son of Matilda, succeeded, ruling until 1189.

The name of the Wido de Bramewice is found in 1168 but, sadly there is no mention of his connection to the manor. It is reasonable to suppose he held the castle for the de Pagnells.

In 1173 Gervase de Pagnell supported the young Prince Henry against his father, Henry II. The rising failed and Dudley Castle was destroyed as punishment.

Two years later Gervase de Pagnell granted Aston and it's three daughter churches, including the chapel of St Mary at Wody Bramewice, to Tickford Priory. We take this as the foundation of our church.

Was the building named in this Charter still a crude timber structure or was it the stone chapel we think remains within the Parish Church we see today?

Save the Date!...

Castle Bromwich Hall Hotel Wedding Open Day

Sunday 12th November 2023

12pm – 3pm



Call – 0121 748 0030

Email – info@cbhh.co.uk

What a wonderful group of women!



At the end of September, these amazing ladies celebrated 40 years of their Over 60's Keep Fit groups!

This group was originally started by Dr. Jack Stuart in 1983, and the group met at the Coleshill Clinic in Parkfield Road, Dr. Stuart set it up as a Health Club to keep retired residents active and fit.

Due to unforeseen circumstances the group stopped for a while and when members were keen to start again, they had challenges finding a room big enough for them all. So, one group became two, with half the keep-fitters in the Town Hall and the other half, moved into the United Church on Coventry Road.

Then 2020 arrived, bringing us the challenges of Covid 19 and lockdown, so everything ceased. Post-Covid both groups ended up running their sessions in the Town Hall again but on different days, as these groups had now developed their own

personality and routines, and today these are both still going strong!

The current 'Over 50's Keep Fit Group' meet in the Town Hall on a Wednesday morning, led by Dot and Nadine and the 'Keep Fit & Natter Group' meet in the Town Hall on Monday mornings led by Ida and Chris.

The Coleshill Town Council secured some funding from “Think Active” under the scheme of “Tackling Inequalities Grants” in November 2020, to purchase the television with integral DVD Player which is mounted on the wall in the Old Court Room. The ladies no longer use their cassette tapes, nor the portable DVD player – that came next – but they love the TV as they can all easily see it and follow the instructions.

If you don't use it, you lose it! So, the saying goes, and all these incredible women have been using these groups to keep fit, keep active and keep well. Well done to them all!



R.I.P. Rita Price



Phil, Chris and Cathy would like to thank everyone that attended Rita's funeral and wake on 02nd October 2023. Thank you also to those who contributed to her chosen charity, Midland Air Ambulance, and for the many cards and messages of condolence that were received.

Rita was a much loved and valued member of her family, her community and her Church (she was a steward at Sacred Heart and St Teresa) She will be very much missed by everyone who knew her.

R.I.P. mum xx

MACMILLIAN COFFEE MORNING 2023



On Friday 29th September, it was the annual Macmillan Coffee Morning, this is a great opportunity to bring people together to have fun, chat, eat cake and coffee, and raise some money to help people with cancer. This disease touches everyone's life nowadays, be it a family member, a friend, a work colleague or a neighbour. We all seem to know someone who is challenged with this cruel, complex illness.

Luckily, at Coleshill Town Hall on 29th September, it was delight to attend the fun-packed, cake filled Old Court Room and to come together with lots of people from Coleshill and the surrounding area, to raise money to help others.

The Coleshill Community Hub Annual Macmillan Coffee Morning is always organized and led by the lovely Hub Volunteer Joan. She is amazing, and in her previous home in Tewkesbury she annually raised money for Macmillan, so when she moved near Coleshill 5 years ago and started to volunteer at the Hub, she asked if she could do these coffee mornings. What a huge success these have been, all led by Joan, with lots of help from her fellow Hub volunteers. Each year they have raised more and more money for charity, this year we are proud to announce that the sum obtained, is a staggering £1116.00 for Macmillan!!! FABULOUS



What a huge achievement, the event was packed as lots of people had contributed, made and delivered cakes, donated raffle prizes, helped set up, manned stalls, given monetary donations etc.

We were delighted to also receive the added support of a group of Coleshill School Sixth Formers, who were accompanied by the sixth form administrator, the lovely Charlie Painter (previously our amazing Hub coordinator for 2 years). These pupils did a sterling job, serving cakes, waiting on tables, helping on stalls and doing ALL the washing up.

Go and see the wonderful sixth form students, who will be helping out again, at the Sixth Form Open Evening on Thursday 23rd November at the Coleshill School, between 6.00 – 8.00 pm

What a super opportunity it was to bring the Town Council and Hub, the Coleshill School and the Community together. It really is astonishing what can be achieved working together in collaboration. Isn't this what community is all about?

This group event proves how beneficial it is to come together for the greater good. To prove this, just look at the total raised, we have never exceeded £1000 - but this year, with ALL your tremendous help, donations, support and input we smashed the £1000 barrier and everyone had a super day, all to benefit and help others.

So, so many thanks you, but we'll try (fingers crossed and name you all – if possible). Here goes:

As a Coleshill resident, be proud, YOU are amazing!

Castle Bromwich Singers
present

Carols by Candlelight

Tuesday 12th December 2023
19:30 until 22:00

Castle Bromwich Baptist Church
Timberley Lane
B34 7HU

Tickets available from
TicketSource



Greg on
07951 562 907
David on
07824 313538
and on the door



Price £6.00 (£4.00 under 16)

www.castlebromwichsingers.org.uk

www.facebook.com/cbsingers

Happy World Diabetes Day and Diabetes awareness Month!



Tuesday 14th November marks World Diabetes Day and November is Diabetes awareness month. Diabetes is said to be a modern epidemic affecting many who don't even realise it. As Podiatrists, we focus on the effects that diabetes can have on the foot. There are many tips and advice we can give to help you look after your feet and prevent any problems. Additionally, we annually complete a diabetic screening to monitor any changes that may occur and report this directly to your GP.

If you would like to book in to see one of our HCPC registered Podiatrists you can do so by either calling 0121 749 6313 or visiting our clinic located at 329 Chester Road, Castle Bromwich, Birmingham, B36 0JG. If you would like to book an appointment with us online, you can do so by visiting www.walshpodiatry.co.uk

We have prepared a presentation if you would like to learn more about how Diabetes affects your feet, how you can look after your feet as a Diabetic and why Podiatry is important when you have Diabetes.



Customer Review ★★★★★

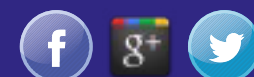
Visited yesterday with my son, could not fault the service from booking to the appointment. Friendly and helpful staff. The lady we saw was really knowledgeable and helpful and gave us options. Definitely, going to book the next appointment in. There was no pressure and it was really relaxed.

Rachel Speers

WALSH
PODIATRY

hpcp registered
www.hpcp.co.uk

Make sure your feet are in safe hands
Always use a HCPC Registered Podiatrist



tel. **0121 749 6313**
www.walshpodiatry.co.uk

Our highly skilled Podiatry led team can put you at ease and provide specialist treatment to help your feet look and feel wonderful again
329 Chester Road, Castle Bromwich, Birmingham, B36 0JG

Coleshill Drama Group

Are you interested in Coleshill's future?

Coleshill Drama Group most certainly is. Have you heard of the plans to redevelop The Croft? Do you think we should have a gastro pub and gift shop in a designated green wildlife area beside HS2?

Coleshillian Peter Saunders, now CEO of seven major companies in Europe and owner of a major food chain and well known delivery service, has decided to return to the town of his birth to lay out his plans for its redevelopment.

If you want to be one of those who want to know more, then be sure to get your tickets for Coleshill Drama Group's "Killers on the Croft", Coleshill's own murder mystery written by Jon Pegg, set in the High Street and environs.

Tickets, £12 full price, £10 concessions (retired persons or those in full time education) are now available from Coleshill Library, Gascoignes of Coleshill Ltd and Cafe on the Hill. They can also be purchased online at coleshilldrama.co.uk. or telephone Sue Wallace on 01675 462674.

Car parking will be available at Chantry House opposite Coleshill Town Hall, where the performance commences each night Thursday 9th, Friday 10th and Saturday 11th November at 7.30pm. Doors open at 7pm when the licensed bar, selling Church End beers, is open and drinks can be taken to your table.

This is the first time that Coleshill Drama Group has had a play written specifically for the Group about the Town in which it has performed for 90 years. Make sure you don't miss out on hearing proposals for your Town. In fact, should you wish to come each of the three nights, you will see a different outcome and ending. You will be surprised!"



Kavanagh's Kitchens and Bathrooms

32 East Meadway, Tile Cross, Birmingham B33 0AP
Tel. No.: 0121 604 6464 Fax No.: 0121 784 8584

www.kavsbathrooms.co.uk



THE COMPLETE DESIGN & INSTALLATION SERVICE
We offer a full installation service with a 3 year warranty

Visit our large kitchen & bathroom showroom
established since 1989

TEL: 0121 604 6464

32 East Meadway, Kitts Green, Birmingham, B33 0AP

www.kavsbathrooms.co.uk

www.facebook.com/kavsbathrooms
www.instagram.com/kavsbathrooms



Coleshill Drama Group presents...

Killers on the Croft

By Jon Pegg

An original Murder Mystery set in Coleshill, for the people of Coleshill... With 3 different endings! A different conclusion each night!

9th, 10th, 11th November

Coleshill Town Hall

Book tickets online at:
www.coleshilldrama.co.uk

Tickets also available for purchase at:
Coleshill Library, Cafe on the Hill,
Gascoignes of Coleshill

Or contact Sue Wallace on:
01675 46 26 74

Doors open 7:00
Curtain up 7:30
Licensed bar and
tea/coffee available
Free parking at
Chantry House

Tickets £12
Concessions £10



'Helping Retirees Enjoy Their Retirement'

HBFS Equity Release Ltd only advise you on lifetime mortgages where you retain 100% ownership and the deeds to your property. All the products meet the standards and principles set out by the Equity Release Council so you have the peace of mind of knowing that you and your family are protected by these customer focused safeguards as well as being regulated under the Financial Conduct Authority.

CALL 01564 711015

WE OFFER AN INDEPENDENT NATIONWIDE SERVICE

www.hbfsonline.co.uk

Email: k.tedstone@hbfsonline.co.uk - k.teague@hbfsonline.co.uk

HBFS Equity Release Limited Authorised and Regulated by the Financial Conduct Authority - Registration Number 304106

Craft & Gift Fair

Victory Hall

76 Chester Rd, Castle Bromwich B36 9BU
Car parking available at The Men's Club next door

X12 & 71 buses stop close by

JEWELLERY **Saturday**
BAGS **November 18th**
CARDS

BRIC-A-BRAC **10.00 - 2.00**

AND LOTS MORE **HOME MADE CAKES**
TEA/COFFEE

All profits to charity

mclifetchurch.com

Coleshill Remembrance Parade and Service 2023 – All welcome



Coleshill's Town Mayor, Councillor Tony Battle, The Reverend Sarah Tillett from Coleshill Parish Church and Mr Ray Richardson from the Royal British Legion, wish to extend a cordial invitation to you to join them at the Annual Remembrance Day Parade and Service which will take place at the war memorial on the grounds of the Parish Church on Sunday 12th November 2023.

The Parade: Those wishing to join the parade are asked to be at Chantry House, High Street, Coleshill, B46 3BG no later than 10:15. The Parade will leave the grounds at 10:30 and process through the town to the Parish Church, Church Hill.

Please note the change of location for the start of the parade (please check social media or the Parish notice board for any further changes to the Parade route).

The Service: Those wishing to attend the service only, are asked to gather on Church Hill by the church wall (opposite Bank House) by 10:40, for the service to commence at 10:50, kindly be directed by members of

the church community, volunteers and Coleshill Town Council Officers.

During the service there will be the formal wreath laying of the dignitaries' wreaths. All other wreaths are encouraged to be laid after the service. There will also be an opportunity to lay wreaths on Armistice Day, Saturday 11th November 2023 at an outdoor service conducted by the Parish Church from 10:50.

Please note: This is an outdoor service; no seating will be available outside the Church. Space will be reserved for the Town Band, dignitaries and official parade attendees only.

Car parking facilities will be available at Coleshill Primary School, Wingfield Road, Coleshill, B46 3LL.

For information: the church will be open throughout the day for personal reflection, prayer and candle lighting. Toilet facilities (including disabled toilet) are also available in the church.

Santa's Grotto, Face painting, Tombola, Christmas Cakes and lots of Christmas Craft Stalls, & Christmas Carols!

Hudson's Care



Day Service's Christmas Fayre

Sunday 26th November
11am - 3pm
Coventry Road Coleshill
B46 3ED

If you would like to book a table please contact enquires@fatherhudsons.org.uk or 01675 434000

Park Access® is the new benchmark for accessible and inclusive parking and electric vehicle charging



British Parking Association and Disabled Motoring UK launch pioneering new accreditation

Park Access® is a brand new accreditation that aims to become recognised throughout the whole of the UK for accessible and inclusive parking and electric vehicle charging facilities. Park Access will enable everyone, regardless of their accessibility needs, to identify car parks and facilities, such as EV charge points, that they can use with ease. Park Access brings together the very best of two accreditations – the Disabled Parking Accreditation and People's Parking Award to automatically become the UK's industry benchmark for accessible and inclusive parking and electric vehicle charging facilities.

Park Access EV includes requirements and recommendations for accessible EV charging informed by the new British

Standard Institution accessibility standard, PAS 1899. A Park Access Handbook has been produced to provide parking operators with guidance and clarity, simplifying the process to ensure that their car parks and EV charge points are accessible to everyone.

Sara Fisher, BPA Head of Operations and Business Development, said: "The parking sector is constantly evolving with the exciting growth in popularity of electric vehicles and the drive to net zero. The BPA is leading the EV parking revolution and recognises there is also a need to ensure that car parks and EV charge points are accessible to everyone. Park Access is a brand-new benchmark for accessible parking and charging."

"We want all motorists, whatever their abilities, to plan their journey, parking, and EV charging with confidence. That's why we have included Park Access sites alongside Safer Parking sites on our Park Mark® car park finder and on other major parking apps."

For more information visit: www.britishparking.co.uk/Park-Access

Park Mark® Car Park Finder: <https://parkmark.co.uk/car-park-finder?query=>

Bed Bugs: Night night sleep tight, don't let the bed bugs bite



A saying that has been used by parents and guardians for many years when tucking young children into bed, "sleep tight, don't let the bed bugs bite" but unlike the name suggests bed bugs don't just make their home in bedrooms and beds, they can infest just about any room in your property hiding away in cracks and crevice's, behind skirting boards, inside bedside furniture, behind picture frames and loose wallpaper, plug sockets and light switches, and I've even found them hiding in the remote control for the TV.

In short, Bed Bugs can thrive anywhere there is a food source – blood, yes that's right they feed off human hosts usually while we sleep.

Bed Bugs were virtually eradicated in the UK during the 50's and 60's but due to

the onset of insecticide resistance and the popularity of international travel they started to make a reappearance in the late 70s to mid-80s and have now reached almost epidemic levels here in the UK as well as around the world.

If you have been unlucky enough to experience having Bed Bugs, you will know it is no laughing matter. This small blood sucking insect can turn yours and your family's life upside down and ruin a guest house or hotels reputation.

We are often asked "how have we ended up with Bed Bugs? We keep our property clean and tidy", I can tell you hand on heart, a bed bug infestation has nothing to do with how clean or dirty a property may be, bed bugs can be picked up by anyone and from some of the most unexpected places.

Bed Bugs have always been associated with travellers and traveling but it is not just hotels, hostels, and guest houses that they can be picked up from, they have even been found on public transport and within cinemas and theatre seating, in fact anywhere with a constant turnover of people.

You see Bed Bugs are fantastic hitch hikers and it is not always obvious where they have come from, but commonly they can be introduced to your property after attaching themselves to luggage, bags, clothes or through bringing second-hand furniture into your property, they can even

nip through from next door.

A female Bed Bug lays 200 – 500 eggs over a two-month period in batches of 10 to 50 and dependent on the environmental conditions these eggs can hatch in just over 7 days and the newly hatched nymphs shed five times before reaching maturity. A blood meal is needed between each moult, and under favourable conditions with a ready supply of blood, they can mature in as little as a month and produce multiple generations per year.

So how do you know if you have Bed Bugs? The truth is you can go months without knowing you have them, these vampires of the insect world only come out of hiding during the night to feed on their unsuspecting sleeping host attracted by the CO2 that they breathe out and it's not until their numbers have increased significantly do you start to see some of the more common tell-tale signs of a Bed Bug infestation, such as blood smears, but in fact it's not blood, it's blood enriched Bed Bug poo. This faecal matter can usually be found on bed sheets and around the mattress edge as well as along the bed frame and headboard.

Another tell-tale sign that Bed Bugs are present are the shed exoskeletons of the Bed Bugs as they go through the moulting and development process over the five stages, you may even come across the bed bugs themselves, these are a dark mahogany brown colour and measure 2.5-5mm long flat and oval, a bit like an apple seed with legs.

We are often asked to look at photographs of welts or swellings on legs, arms and backs with the sender asking the question can you tell me what's biting me, unfortunately it's impossible to tell from photographs alone if you are being bitten by bed bugs, even your GP wouldn't be able to diagnose what's biting you, he can only guess as there are many other insects such as fleas or mosquitoes that can inflict nasty bites while you're sleeping, typically though bed bug bites tend to show themselves as a series of bites in a straight line, but this cannot always be relied upon and it can be dependent upon a person's sensitivity to the bites and as much as 48 hours may pass before the formation of a

welt can be physically seen. The bites can then become severely inflamed and sore and if scratched and the skin is broken can lead to infections. They will often bite the exposed parts of your body such as the upper torso, face, arms, or ankles but can also appear anywhere on your body if it is exposed while sleeping.

The last thing that a Bed Bug wants is for you to wake up while it is feasting upon your blood, so they inject you with an anaesthetic to stop you from feeling any discomfort and an anticoagulant to stop your blood from coagulating. Once it has had its fill, it wanders back to its hide away until it needs to feed again, leaving you none the wiser until the anaesthetic wears off.

At present Bed Bugs are not classed as a public health pest as there's no current evidence that they spread disease from person to person through contaminated blood, they are classed more a nuisance pest that can cause great psychological harm to those who find their homes have become infested, as well as huge financial burden to business premises such as hotels, guest houses and Air B&Bs through bad reviews on social media and trip advisor.

If you think you may have bed bugs, we highly recommend that you do not try to tackle them yourselves by using aerosols or insecticide bombs, these DIY products tend to disperse the bed bugs away from their harbourage sites making them even harder to eradicate. We suggest that you employ the services of a qualified professional pest control company to deal with your bed bug infestation, they will have pest control technicians who have the knowledge and experience as well as all the correct equipment needed to swiftly resolve your bed bug infestation.

Pied Piper will conduct a comprehensive inspection survey of your property and any Bed Bugs found can be treated in a completely NON-TOXIC way, without the use of harsh chemicals, because truthfully who wants to sleep in a bed or room that has been heavily sprayed with insecticide.

SLEEP TIGHT



Pied Piper

Pest & Wildlife Management



All Pest Species Catered For
(except Mother in laws & teenage kids)




A Family run business established in 2006 offering industry accredited pest control & wildlife management at an affordable cost throughout Solihull & North Warwickshire.

0121 246 8879

www.piedpiperpestmanagement.co.uk
info@piedpiperpestmanagement.co.uk

ADVERTISE YOUR BUSINESS HERE

For more information on how to advertise in any of our titles please call:

0121 749 7502 / 07805 430191 or
 email: editor.postgroup@outlook.com



Pet Page

Top tips from the RSPCA Coventry on caring for your pets during the cost-of-living crisis



At the RSPCA Coventry & District branch, we know that many of us are animal lovers and would love to adopt a furry friend into our lives. We also know that the cost of living is a concern and that potential owners are worried about looking after their pets well.

Adopt rather than shop

There are many animal charities, like ourselves, who take in animals that need rehoming. Every animal that leaves us for its forever home has been microchipped, neutered, vaccinated, and treated for fleas. While there is an adoption fee this is not only lower than buying a pedigree breed, you also know that with our organisation, the animal's behaviour has been reviewed and we can advise you on a possible pet that will fit in with your lifestyle. You can see some of our dogs and cats that are looking for a home around this article.

Shop around for pet insurance

We'd always recommend pet insurance as while it can seem an unnecessary expense, should the worst occur and your pet does, unfortunately, become ill, vet fees can soon rack up. Pet insurance can then be a literal lifesaver. Shopping around for the best insurance though is always a good idea. Compare plans and prices against your budget and always shop around at renewal time. Talk to your local vets as well, they may have partnerships with insurers or have payment plans available. When you adopt from the RSPCA Coventry and District Branch you automatically get four weeks free pet insurance.

Buy your prescriptions online

There are pet health clubs that can help with the costs of flea and worm treatments. But we'd also recommend

asking your vet for a prescription and then shopping online for the medicine. This can often be considerably cheaper than going direct and help save you money while giving your pet what they need.

Time to play

One of the greatest gifts you can give your pet is your time. While that doesn't have a direct cost attached to it there are always easy handmade toys you can make your pet to improve their life. Chew toys for dogs can be made from old t-shirts or socks simply by tying knots in them. And we all know cats love an empty cardboard box!

The benefits to you of having a pet

Finally, we'd tell you to ask yourself what the benefits of owning an animal are to you. Research shows that pets reduce our stress and anxiety and provide companionship. Something essential during times such as these. Their love and loyalty is priceless and truly rewarding.

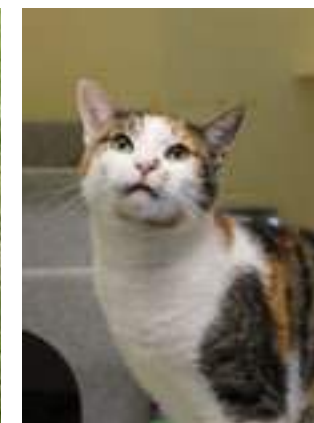
Where else to look for support?

If you are still unsure about adopting a pet or concerned about caring for your current animal then please get in touch with us. We want to make sure our animals are right for humans and introductions as part of the adoption process are important to us. During these introductions, we also talk about looking after your animal and the options available to you.

<https://www.rspca-coventryanddistrict.org.uk/>

<https://www.facebook.com/RSPCAcoventryandDistrictBranch>

<https://www.instagram.com/rspcacoventry/>



Halloween & Fireworks



Halloween is fast approaching and can be a scary time for some dogs, with knocks at the door and scary-looking people on the other side in strange costumes. Try and stick to your dog's normal routine as much as possible and if you know your dog could be worried about these strange visitors then leave them in the kitchen in their bed or wherever their safe place is when you answer the door, rather than allowing them to get stressed. Also be aware of the increased amount of sweets and chocolate you may have out waiting for the door to go as this can be toxic to dogs.

However it's not all doom and gloom some dogs love the fun and as a family you can enjoy the time together, there are lots of costumes around and if you are going to dress your dog up make sure they are happy and not stressed with it and also ensure that whatever outfit you choose doesn't restrict their movements. You could also make your dog some special dog-safe Halloween pumpkin treats there are lots of recipes online.

Bonfire Night

For a safe and hopefully relaxing night here are some top tips below: -

- Make sure you walk and feed your dog early before it gets dark.
- Check that your garden fencing is fully secured in case you need to let them out while there are bangs, and please ensure they have their collar and tag on.
- Be aware that fear trumps obedience so be mindful of this and allow your dog to be where it feels safe in the house. Create a safe space, maybe their crate with the door open, with a blanket over if they have one; start doing this now so your dog gets used to it.
- There are natural remedies available online such as plug in adapters, Scullcap & Valerian and if needs be speak to your vet now if you think your dog will be really worried.
- Remember to stay relaxed yourself so popping on the TV or radio can mask the sounds for your dog as well as helping you.
- If your dog has a drying coat or thunder coat popping that on can also help calm them.
- Rest assured that you won't make the situation worse by fussing them if that's what they want but some dogs may just like to be left alone.
- If your dog is up for it why not try some new enrichment fun, like a frozen stuffed Kong or lick mat to keep your dog distracted or play games in the house, a bit of training, doggy sit ups – tire that mind out and lower the arousal, so they settle more easily.
- After the night itself some dogs may take time to full relax so consider the enrichment mentioned above or allow them space and if your dog is really struggling then seek professional advice to help them and make things easier for next year.

Ward End Cat Rescue

We are a small, home-based rescue, run solely by volunteers.

Here are a few of our cats who are currently ready for adoption, this can change daily so please feel free to email us for more details of cats available by sending us a contact number, address and who lives in your household.

Fred is a lovely cat, aged approx 1-2 years old. He is very friendly most of the time but can be a bit cheeky and unpredictable at times.



Bertie is approximately 1 year old and a really loving, friendly cat.



Please come and support us at our fundraising Christmas Fayre on the 2nd December, full details on the poster. We are looking for raffle/tombola prizes for this Christmas event and also volunteers to help on the day. If you are a local business and could offer a prize please let us know. Please contact Suzy at the rescue for more information.

If you're looking to adopt a cat, or if you'd like to support the work of Ward End Cat Rescue, please visit our facebook page [WARD END CAT RESCUE OFFICIAL](#) or email us on wardendcatrescueofficial@outlook.com



TIME TO TOUGHEN UP SAYS OPEN SPACES SOCIETY



The Open Spaces Society⁽¹⁾ considers that it is vital to get tough in these times of austerity. The general secretary, Kate Ashbrook, writes in Opinion, in Open Space, of the parallels of today with the post-war period which produced the National Parks and Access to the Countryside Act 1949, known as 'the People's Charter'.

Says Kate: 'That Act, the 75th anniversary of which we celebrate next year, was ground breaking, giving us national parks, areas of outstanding natural beauty, definitive maps of rights of way, and much more. Good things flowed in a time of austerity.

'We have austerity today, but there aren't so many of the good things. Public paths and open spaces suffer when local authorities are starved of resources. We shall hit them with legal notices to force action, taking them to court if necessary, to show that they must prioritise spending on paths and access, which are so crucial to people's health and well-being,' Kate declares.

'We need more access close to home, to help those without the means, confidence, or ability to reach the natural environment. Legal access to woodlands and watersides, and on water would be admirable. Developers must be mandated to register spaces as town and village greens⁽²⁾, to guarantee local people's rights there and protect them for ever.'

'Public paths, the most important means of gaining access to the outdoors, must be properly recorded, protected, and maintained. A new government must repeal the cut-off for historic-path claims⁽³⁾; use agricultural money for new access; and provide enough funds to get our rights of way fully open and usable—among much else,' Kate says. 'This is vital for levelling up—and a fitting way to celebrate the 75th anniversary of the People's Charter.'

Also in this issue of Open Space:

Saving Blackwell parkland in Darlington.

The Dartmoor backpack camping case explained.

The society's presents the Eversley Award to Norfolk activist, Ian Witham.

Successes on open spaces in Lancaster and Bristol.

Commons stories in Hertfordshire, Powys, Bridgend, East Sussex, and Cornwall.

Path claimed in East Sussex.

Paths reopened in Cornwall, and Oxfordshire.

www.oss.org.uk

1. The Open Spaces Society was founded in 1865 and is Britain's oldest national conservation body. It campaigns to protect common land, village greens, open spaces and public paths, and people's right to enjoy them.

2. A town or village green is land which local people have used for informal recreation for 20 years without being challenged or asking permission. It is possible for a landowner voluntarily to register land as a green without such evidence. Once registered the land is protected from development and encroachment, and local people have rights of recreation there.

3. In 2000 the government introduced legislation to prevent people from claiming historic paths for the definitive map after 2026. The government has said it will extend this until 2031, but it is still far too short a period for volunteers to claim the thousands of historic routes which need to be rescued.

Interiors & Decorating

Painting and Decorating in the UK: A Journey Through History

The art of painting and decorating has a rich and storied history in the United Kingdom, dating back centuries. From the ornate interiors of royal palaces to the charming cottages of the countryside, the UK's history of painting and decorating is a testament to both artistic expression and practical craftsmanship. In this article, we will take a journey through time, exploring the evolution of this craft from its early roots to the modern era.

1. Early Beginnings: Medieval and Renaissance Periods

Painting and decorating in the UK has its roots in the medieval and Renaissance periods. During this time, artistry was primarily focused on religious and royal commissions. Skilled craftsmen adorned cathedrals, castles, and palaces with elaborate frescoes, tapestries, and ornate wall treatments. The aim was not just to beautify but also to convey religious and political messages.

The most iconic example of this period is the stunningly decorated Westminster Hall in the Palace of Westminster, featuring a hammerbeam roof and numerous heraldic motifs. The use of natural pigments, gold leaf, and intricate detailing marked this era of painting and decorating.

2. The Georgian Era: Neoclassical Elegance

The Georgian era, spanning the early 18th century, brought about significant changes in the world of painting and decorating. The neoclassical style, inspired by ancient Greece and Rome, gained popularity. Interiors were characterized by stuccoed ceilings, decorative moldings, and symmetrical patterns. Prominent designers like Robert Adam and Josiah Wedgwood influenced this era's aesthetics.

Stately homes, such as Chatsworth House in Derbyshire, showcased this neoclassical elegance. Elaborate wall treatments, including hand-painted wallpapers and trompe-l'oeil murals, became increasingly popular.

3. The Victorian Era: A Flourish of Eclecticism

The Victorian era, from the mid-19th century into the early 20th century, saw a flourish of styles in painting and decorating. The Industrial Revolution allowed for the mass production of decorative elements like wallpaper, which became more accessible to the middle classes.

Homes during this period featured richly patterned wallpapers, ornate woodwork, and a penchant for dark and heavy colour schemes. The Arts and Crafts movement, led by designers like William Morris, emphasised handmade, nature-inspired patterns in response to industrialisation.

4. The Arts and Crafts Movement: A Return to Craftsmanship

The late 19th and early 20th centuries marked a shift towards the Arts and Crafts movement, which advocated a return to craftsmanship and traditional techniques. This movement, led by visionaries like William Morris and Charles Rennie Mackintosh, celebrated the handcrafted and the individual.

Arts and Crafts interiors were characterised by the use of local materials, intricate detailing, and a focus on simplicity and functionality. Hand-painted tiles, stained glass, and custom-made furniture became key elements of the movement.

5. The Mid-20th Century: Modernism and Minimalism

The mid-20th century brought a significant departure from the elaborate designs of the past. The modernist movement embraced minimalism and functionality. In interior design, a "less is more" philosophy prevailed. White and neutral colour palettes, open spaces, and simple lines were the hallmarks of this era.

Designers like Terence Conran and Robin Day championed the use of clean, unadorned surfaces. The minimalist approach allowed for greater flexibility in personal expression, enabling homeowners to incorporate their own style through choice of furniture and décor.

6. Contemporary Painting and Decorating: A Fusion of Styles

Today, the world of painting and decorating in the UK is a fusion of diverse styles and influences. The British Isles have always been a hub for creative inspiration, welcoming various design movements from across the globe. Whether it's the industrial chic of converted warehouses in East London or the timeless elegance of Georgian townhouses in Bath, contemporary interiors reflect a blend of old and new.

7. The Role of Technology

Advancements in technology have revolutionised the painting and decorating industry. Computer-aided design (CAD) software enables designers to create and visualise intricate patterns and colour schemes with precision. Virtual reality tools can provide clients with immersive walkthroughs of proposed designs, helping them make informed decisions.

Additionally, modern paint formulations have evolved to be more environmentally friendly, and smart home technology allows for dynamic lighting and climate control, enhancing the overall ambiance of interior spaces.

8. Sustainability and Eco-Friendly Practices

In recent years, there has been a growing emphasis on sustainability and eco-friendly practices within the painting and decorating industry. This shift reflects broader concerns about environmental conservation and responsible consumption.

Many decorators now opt for low-VOC (volatile organic compound) paints that are less harmful to the environment and human health. Additionally, reclaimed and repurposed materials are increasingly used to create unique and environmentally conscious interiors.

9. The Influence of Cultural Diversity

The UK's multicultural society has significantly influenced the world of painting and decorating. Diverse cultural traditions and design aesthetics have found their place in British interiors. From the vibrant colours and patterns of South Asian decor to the minimalist elegance of Japanese design, this multicultural influence has added depth and variety to the craft.

10. The Future of Painting and Decorating

The future of painting and decorating in the UK is likely to be marked by continued innovation and adaptation. Sustainable and eco-friendly practices will become more prominent, and technology will continue to play a crucial role in design and execution. Moreover, the UK's design community will draw inspiration from global trends while preserving the rich heritage of its own artistic traditions.

In conclusion, the history of painting and decorating in the UK is a captivating journey through time. From the opulent interiors of medieval castles to the minimalist spaces of the modern era, this craft has evolved in response to changing tastes and influences. The UK's unique blend of tradition and innovation continues to shape the world of interior design, making it an exciting and dynamic field that embraces the past while looking to the future.



PLATINUM
INTERIOR DECORATING



PLATINUM
INTERIOR DECORATING

We are a husband and wife
painting and decorating team

All aspects of domestic and small
commercial projects undertaken

Contact Jim or Clare
for a free quote on:

0121 747 7202

07814 566657
or 07792 508819

- Free written quotes
- Friendly, clean and reliable service
- Advice available on colour matching

info@platinuminteriordecorating.co.uk
www.platinuminteriordecorating.co.uk



Christmas Shows

Castle Bromwich Singers

Bells will be ringing and carollers will be singing, as Castle Bromwich Singers present two very different shows this Christmas.

"It's Christmas" is our main show featuring all your favourite, familiar Christmas songs both modern and traditional. We'll be jingling and jolly-ing to make your evening merry and bright.

"It's Christmas"

Wednesday 6th, Thursday 7th, Friday 8th Curtain up - 7.30pm
Saturday 9th Curtain up - 5.00pm

Arden Hall, Castle Bromwich B36 9PB

The bar is open from Thursday to Saturday with other refreshments available.

Our second show, "Carols by Candlelight" the following week, celebrates the reason for the season with carols and songs to feel peace, joy, hope and love as we spread some Christmas magic.

"Carols by Candlelight"
Tuesday 12th - 7.30pm

Baptist Church Timberley Lane, B36 7HU

Our charity this year is Read Easy which offers free, one-to-one coaching to adults who want to learn to read via their trained volunteers. Over 7% of the working age population in the UK can barely read or cannot read at all. Please come and support our shows and be on Santa's nice list this Christmas.

Tickets are available via www.ticketsource.co.uk and on the door each night of the shows. Please see the posters below for all details.

Ho-ho-ho! Goodwill to all.



Social business networking event

Nov 20th – 6pm til 8.30pm

- We meet up on the 3rd Monday of every month
- Relaxed informal business networking
- No Commitment
- Raise your business profile
- Meet like minded people
- Business card and leaflet table available (bring your literature)
- If you would like to sign up for future presentations (ask a member of the team)

Price £5 per person

Bar will be open for refreshments
Tea and Coffee available

Contact us

email: networking@biznetlocal.co.uk

call: Serena 07805430191



Guest Speaker Katie Smith

– Bodyshop at Home Consultant Katie Smith will be doing a live demo.

– Talking about how this has become her full time job.

– How you can become a consultant to earn extra income alongside what you currently do.

– How you can book a free pamper session.

The Dog Inn Pub
2 Marsh Ln, Water Orton,
Birmingham B46 1NW



FLOWERS
Landscape Gardening & Block Paving Specialists



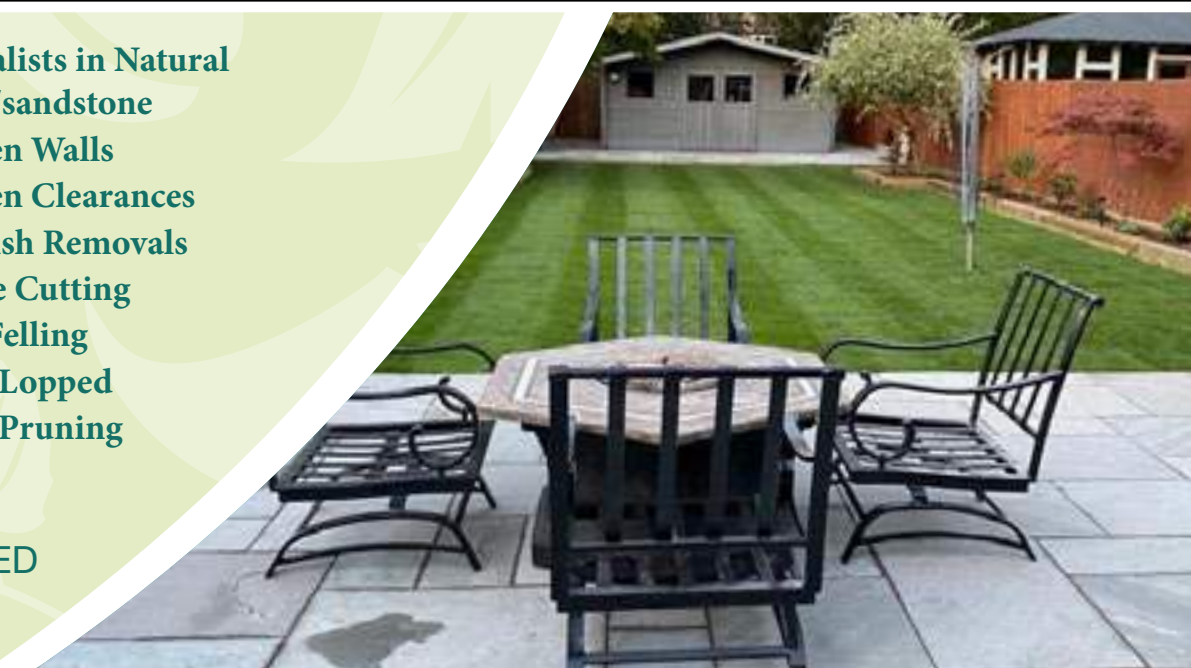
- Block Paving
- Porcelain paving
- Resin Bond driveways
- Tarmac
- Slabbing
- Drive Repairs
- Turfing
- Grass Cutting
- Fencing
- In-print concrete driveways
- Specialists in Natural stone/sandstone
- Garden Walls
- Garden Clearances
- Rubbish Removals
- Hedge Cutting
- Tree Felling
- Trees Lopped
- Trees Pruning

ALL WORK IS GUARANTEED & CARRIED
OUT BY FULLY INSURED WORKMEN

Call for a FREE no obligation quote

T. 0121 770 0362 M. 07773 503816

flowers-landscaping.co.uk



LOCAL SERVICES



GODWOOD GLASS & GLAZING
Est 1982

Broken Glass Replaced
Broken or Misted Double Glazed Units
UPVC & Aluminium Window Repairs
Handles & Hinges Replaced
Window & Door Locks Fitted
All Types of Glass Fitted
No Job Too Small

FOR A FREE QUOTE CALL

Call 07787 804153 and I will call you
straight back

Your Local Castle Bromwich Glazier

Xtreme Tree Care

- Crown Thinning and Reduction
- Felling and Dismantling
- Pruning and Shaping
- Hedge Trimming and Removal
- Specialist Stump Removal

Fully Insured
All Staff Fully Qualified
20 Years Experience

For a free quotation from your
Local Tree Surgeon call
07951 332 401

11 Shawbury Cottages, Pump Lane, Shawbury, Coleshill, B46 2RW
xtreemetreecare@bt.com

COLESHILL ROOFING

- UPVC Fascia & Soffits
- Tile, Slate & Flat Roofing
- Hi-Performance Torch on Felts
- Maintenance Free Guttering Repairs
- Full Insured for your peace of mind
- Skilled, Qualified Craftsmen

OVER
40
YEARS
EXPERIENCE

CONTACT US FOR A FREE QUOTATION



01675 462 344

07956 890 488 / 07966 409 706

coleshill.roofing@yahoo.co.uk

www.coleshillroofing.co.uk



ADVERTISE YOUR BUSINESS HERE

For more information on
how to advertise in any
of our titles please call:
0121 749 7502
/ 07805 430191
or email:
editor.postgroup@outlook.com

READ OUR PAPERS ON THE GO

www.postgroupmidlands.com



POST GROUP
MIDLANDS LTD

COLESHILL & DISTRICT GARDENING CLUB

Monday 20th November

Come along and enjoy making a table decoration or a Christmas door wreath. Foliage/oasis will be provided. All equipment will be available however please bring anything that you may want to use/add to your decorations.

7.30pm Coleshill Community Centre,
Temple Way, corner of Station Road.

Members £3.50 Non Members Welcome £5
Refreshments included.

For more information contact Meda on **07549037477**

Local Sports



All about the TEAM-work as Coleshill's Candidate Source back girls football team

A budding group of girl footballers, keen to emulate the likes of Mary Earps, Lucy Bronze and Alex Greenwood, has been given a major boost by the recruitment sector.



Allenton United (Group 1): (l-r) Ricky Shepherd (Allenton United), Michelle Davies (Candidate Source), Carly Croft (Allenton United) and Andrew Davies (Allenton United) with the Under-12s girls team.

Allenton United Under-12s has netted more than £6250 of sponsorship from Coleshill recruitment advertisement agency Candidate Source, who has been offering training to members of TEAM (the UK's largest network of independent recruiters) in return for a £30 donation.

37 companies have taken part so far in the courses that are designed to help teach them how to write the best possible job adverts, critically important when you consider the current volatility of the labour market.

The funding has been used to buy 9v9 goals, 20 new footballs, a subs bench, equipment, away strips and clothing for the management team, as the ambitious team look to claim top spot in Division 2 of the Derbyshire Girls and Ladies League.

In order to boost team spirit, the money has also been channelled into fun evenings and days out for the players (bowling, mini golf, laser quest and Oxygen trampoline park), whilst also creating Christmas and Easter 'goodie bags'.

"This is great way to start the season and has given the team a major boost," explained Carly Croft, who has been a manager of Allenton United for the last three years.

"The new kits really look the business and, importantly, we also have additional training gear, coats and snoods that will be needed when the usual UK winter kicks in."

She went on to add: "It's going to be a big season for us. We've been together now

for three years, and the girls are ambitious to play at the highest level – after a very promising pre-season we're setting our sights on promotion to the top division.

"Our players have been inspired by the Lionesses' outstanding performances at the World Cup and, thanks to Candidate Source and TEAM members, we now have all the equipment we need to help give our players the chance to turn their dreams into a reality."

Allenton United celebrates its 20th year as a football club in 2023 and has seen interest in the ladies' game increase massively.

It has gone from having just one female team to boasting multiple sides, including an adult team, four juniors and a 'Wildcat' system that gives young girls who have never played the 'beautiful game' the opportunity to have fun and learn basic skills.

The Under 12s have had a good start to the season, winning their first two games and scoring ten goals in one of the matches.

Michelle Davies, founder of Coleshill-based Candidate Source, added her support:

"The recruitment sector is a competitive market, so it's great to see companies involved in the industry coming together to support the communities they operate in.

"With the Lionesses capturing national headlines in the World Cup, we thought now would be the perfect time to support the next 'Lauren Hemp', 'Lauren James' and 'Alessia Russo' by helping fund a grassroots football team."

She went on to add: "Allenton United has a fantastic community spirit and are doing a lot of work on the ground to get girls into football, so we thought they would be the perfect club."

Candidate Source has been working with the recruitment industry for 13 years, providing a range of bespoke services to help fill vacancies quickly and with the best possible person.

This is achieved by creating job adverts, identifying the most relevant job boards, emergency candidate boosts, media buying and delivering training.

The latter is what has driven the funding for Allenton United, with the company training hundreds of employees from 37 TEAM members in how to write an online job advertisement.

For a donation of £30 per trainee, consultants learned how to get a better return on their best advertisement and investment.

Michelle went on to add: "We train them to think like a candidate and include all the information a job seeker needs to make an informed decision. They also receive a lot of tips and tricks to ensure the advert is seen by the largest group of individuals possible.

"TEAM members have embraced the offer and, together, we have raised over £6250 for Allenton United Under-12s girls team. For the companies who sent a lot of consultants, we have offered them the chance to have their branding on display, with Meridian sponsoring the away shirts/rain jackets and Jobwise the snoods."

Allenton United's Carly Croft concluded: "The girls and my management team want to say a big thank you to TEAM and Candidate Source for placing their faith in us."

For further information, please visit **www.candidatesource.uk.com**

Julie ENGLISH Interiors

BEDROOMS - BATHROOMS - KITCHENS - HALLWAYS

Create Your Perfect Space
One to One Professional Advice &
Guidance Every Step of The Way
To Ensure Perfection
Supply Only or Supply & Installation
Service

Showroom: 205 Tyburn Road, B24 8NB 01214484290 or Contact Julie@julieenglishinteriors.co.uk

Doyle increases career sporting feats to 832



More sporting feats bite the dust for Paddy Doyle who is on the way to increase his career fitness endurance titles and World Records to 1000 physical fitness challenges and World Records covering ten different sporting categories.

He has achieved to date over various Warwickshire venues, arduous military load bearing back pack weight of 50lbs on a 37% incline (20 meters up and down) in 11min. 14.56 sec. 5.31 km cross country run/walk carrying 50lb back pack in 58 min. 25 sec. 1.44 miles carrying 45 lb back pack in 16 min. 10.25 sec. Pooley Park mountain bike course North Warwickshire, carrying mountain bike Instructor expedition kit 35lbs completed the following distances, 8 km - 27 min. 24 sec, 8.5 km - 33 min. 36 sec, 9 km - 38 min. 50 sec, 9.5 km - 43 min. 10 sec, 10 km - 48 min - 44 sec, 10.5 km - 53 min- 49 sec, 11 km- 58 min. 58 sec and 11.5km in 1 hr. 03 min. 40 sec.

The former Paratrooper and ex Army / RAF reservist commented

"I am committed to reach the 1000 global milestone covering ten different sporting disciplines, attempting various physical fitness challenges puts a lot of pressure on the body your muscles and joints are being pushed to their limits, I have to be the first

English endurance athlete to claim the 1000 total. Scottish endurance athlete William Cannon is also aiming for the title as well, I am lucky to have a great support team who are pushing me every mile of the way plus the stewards from various sporting bodies and World Record Associations who independently check the course measurements, stopwatch distances and take action photos and video evidence."



Picture credits David Hastings (Warwickshire UK)

Water Orton & District Tennis Club



So ends another good year of our close working project with the Woodlands School in Coleshill.

This is our 8th year working with these youngsters and once again it's been a very enjoyable time. We would like to thank Mr Phil Sowers Head of P.E. and the excellent hard-working and devoted staff who accompany him and help out with tennis sessions here at our club. They visit us twice every school term week from Easter until the October half term and we all really enjoy having them come to us.

We look forward to having them back with us in 2024.

We have also started having a weekly visit to our club from Water Orton Primary School, once again with their

excellent staff, who organise the weekly sessions. Hopefully these will also develop in 2024 and we can get more involved with the school going forward. It's been a very good year for us as a club and our junior and youth players have done really well.

All credit to our club coaches, Adam Heaton and Liam Berrigan, along with our Level 1 Coaching Assistants Joe Pedley and Cameron Crawley who have done so well this summer. Along with Jess and Chloe-Rose, this gives us a great support team to help work with our junior and youth members.

We are already looking forward to 2024 and taking our club to the next level. Thank you to our Committee and all our members for a really successful year.



Water Orton Cricket Club Social Events

Hi everyone,

Following the recent fantastic Lionel Ritchie Tribute we will be booking him again next year once we know his availability. The support for this show was amazing and we have been asked so many times to get him booked again and we will. We have already got the following booked for 2024

2nd March Elton John Tribute. 12th October Rod Stewart with the fantastic Garry Pease and on 16th November we have the Tina Turner Tribute with the fabulous Millie Munro (she's simply the best) There will also be a couple of Quiz Nights booked in and all the confirmed dates will be here in your editions of The Coleshill Post and The Castle Bromwich Post. Confirmed dates, ticket prices and dates the tickets go on sale will all be listed. Notices are also on the outdoor

notice board by the driveway in, and on the notice inside the clubroom. Tickets are always available from the bar in the clubroom, or Pete Coles at the Cricket Club and Paul Messenger at the Tennis Club.

To round off 2023 which has been a great year for us at the Cricket Club, we have Mark Green with his brilliant Elvis Experience. This is on November 11th tickets now on sale £8-00 each.

We are also having a New Years Eve Party with a great party Disco with all music to suit our members and supporters. Tickets will go on sale at the start of November and will be £12-00 each

Thanks once again our wonderful supporters, we really do appreciate you being there for us. Your support through the winter helps us so much during the months when there is no cricket on.

THANK YOU.



Coleshill Town F.C.

All change at Coleshill Town F.C.

After Six years and 247 games in charge, Manager Cameron Stuart has decided to move on. In that time Cameron gained promotion to Level 4 on the non league pyramid system, the highest level that Coleshill Town have played in their 138 year history, established them as a force in the Northern Premier League, and only just missed out on a second promotion last season making it to the play offs. Everyone at CTFC would like to thank Cameron for his efforts in the last six years and wish him all the best in the future.

So what now for Coleshill?

The first match without Cameron, it was down to experienced players Paul Hathaway and Rob Evans to be temporarily in charge. Within a week Dave Stringer, previously with Sutton Coldfield Town, was appointed

Manager. Several experienced players decided to leave Coleshill, some following their previous manager, so Dave Stringer had a job on his hands. His first game brought a 3-1 win over Rugby Town, encouraging, but with old players leaving and new players coming in, confidence was at an all time low. Coleshill travelled to Harborough with a scratch side and came up against two former players, Kai Tonge and Amarvir Sandhu, a 3-0 loss, a Red card and a goal by Tonge, his first for his new club, knocked the confidence further. A 2-1 defeat to bottom of the league Rushden, another Red card, then a cup defeat to a team from a lower league and yet another Red card and Dave Stringer left the club by mutual consent.

Chairman Paul Billing immediately turned to the experienced and club legend, with over 450 appearances, goalkeeper Paul Hathaway to lead this club through a very difficult period. His first game in charge is a local

derby away to Coventry Sphinx.

Come on people of Coleshill! Your local club is going through a very difficult period and need your support like never before. Paul Hathaway has been a hero for this club many times, he scores penalties as well as saves them, but is new to Management and needs time, support and lots of luck to steer this club through these difficult waters!



COME ON THE COLEMEN!

Fixture List

Pitching in Northern Premier League Midland Division games unless stated.

Saturday 28th October

Home to Cambridge City.

Saturday 4th November

Home to Walsall Wood.

Saturday 11th November

Away to Hinckley LR.

Monday 13th November

Home to Redditch United. 7.45pm. Birmingham Senior Cup.

Saturday 18th November

Home to Spalding United.

Saturday 25th November

Away to Anstey Nomads.

Saturday 2nd December

Home to Boldmere St Michaels
 3.00pm kick off unless stated.

Coleshill Town FC match reports

All Northern Premier League Midland Division games

Saturday 30th September

Shepshed Dynamo 1 v 0 Coleshill Town

With the exit of manager Cameron Stuart it was experienced players Paul Hathaway and Rob Evans who took charge for this game. Chances were at a premium and it looked a 0-0 all day long but a penalty half way through the second half gave Dynamo the points.

Saturday 7th October

Coleshill Town 3 v 1 Rugby Town

A new manager and a very welcome three points. Theo Rowe scored late in the first half but Rugby equalised early in the second. George Washbourne put the Coleman back in front and a second from Theo Rowe confirmed the win.

Tuesday 10th October

Harborough Town 3 v 0 Coleshill Town

Coleshill's leading goalscorer from last season, Kai Tonge, 36, scored his first goal for his new club against Coleshill. Josh Willis was shown a Red card and against 10 men the home side scored two more.

Saturday 14th October

A.F.C. Rushden & Diamonds 2 v 1 Coleshill Town

A very poor performance as established players leave and new players come in. Five debutants in this game. Rushden are bottom of the league with zero points and were jubilant to get their first win. Debutant Ryan Nesbit scored from the penalty spot, and after a Home player was shown a Red card, Rob Evans also saw red for retaliation.

Tuesday 17th October - Walsall Senior Cup

Tivdale 4 v 3 Coleshill Town

A cup run would do the club and players an opportunity to gain their confidence back and at 3-1 up it looked on the cards. Two goals from Ryan Nesbit and one from Sam Fitzgerald, both new players, put the Coleman in charge but a young talented home side hit back with three goals in six minutes to progress to the next round. George Washbourne was shown a Red card.

Saturday 21st October

Coventry Sphinx 0 v 0 Coleshill Town

New manager Paul Hathaway's first game in charge and a point on the table. A very even game between two committed teams. Chances at a premium but the best chance fell to Lewis Archer who sped away from the home team's defence but sent his shot wide. But for Paul Hathaway a well earned point.

ADVERTISE YOUR BUSINESS WITH US

For prices, media pack and more information

Call 0121 749 7502 / 07805 430191

or email: serena.postgroup@outlook.com



SHARE A STORY

contact:

serena.postgroup@outlook.com



Walk On

FLOORING

CARPET AND VINYL SPECIALISTS

OPENING TIMES

Mon - Fri 9:00am - 5:30pm
Saturday 10:00am - 4:00pm
Sunday CLOSED

TEL: 0121 770 9680



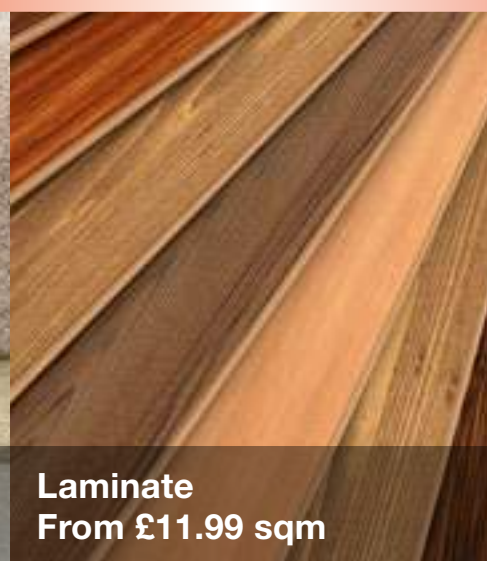
**HALF PRICE CARPET
REMNANTS WHILE
STOCKS LAST**



Vinyls
From £8.99 sqm



Carpets
From £6.99 sqm



Laminate
From £11.99 sqm



Rugs
From £30 each

Why choose Walk On Flooring?

- ★ Local fitters with over 25 years trade experience
- ★ Wide range of carpet and vinyl pattern books
- ★ All work is guaranteed and insured

Home Selection Available!

www.walkonflooring.co.uk

Quality room
size remnants
from only
£29.00



Like us on
Facebook

Showroom: Unit 3, Tile Cross Trading Estate, Tile Cross Road, Tile Cross, Birmingham B33 0NW