

# the Coleshill Post

ADVERTISE YOUR BUSINESS HERE

0121 749 7502

07805 430191

email: [editor.postgroup@outlook.com](mailto:editor.postgroup@outlook.com)

Covering: Coleshill North, Coleshill South, Coleshill Industrial, Water Orton, Curdworth, Maxstoke, Shustoke, Lea Marston, Marston & The Whitacres

May 2023 Issue 111



[postgroupmidlands.com](http://postgroupmidlands.com)

PICK ME UP FREE

## Labour has a better plan for North Warwickshire

Vote Labour on Thursday 4th May



### Coleshill North



Adam Richardson



Jane Farrow

### Coleshill South



Alastair Brett



Keith Brown

### Curdworth



Celia Banner

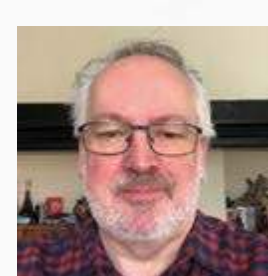


Mike Banner

### Water Orton



Tom Foley



John Broughton

North Warwickshire  
 Labour

## Adam Richardson



Adam is a former Mayor of Coleshill and has served our town as a Town Councillor for the last 8 years. Adam lives in Coleshill North and plays an active role in our community. As a Town Councillor, he has been a strong voice for improvements in the area.

Adam volunteers for local groups and always supports good causes seeking to bring Coleshill together and make this wonderful community the special place that it is to live. Adam is committed to being a strong voice for Coleshill at the Borough Council. It's time for Coleshill to get its fair share of resources and to tackle the long-term issues that the Conservatives have failed to get right.

## Jane Farrow



Jane has served our community as a Town Councillor and then Borough Councillor since 2015. She has been an active voice for our community, voting against Conservative cuts to our services at a time when they've increased council tax to its highest-ever level.

Jane lives in Coleshill North and cares deeply about the local community and wants to fight for a better future for our town. Since being elected, Jane has been part of the Labour team that secured investment in new play areas, including at the Memorial Park, fought plans to develop Daw Mill and campaigned for more investment to tackle crime and anti-social behaviour.

## Alistair Brett



I'm Alistair and have lived in Coleshill since 2009, GREAT TOWN. Originally hailing from Newcastle, I then worked for many years enjoying a successful career in sales and IT Distribution as a director, running companies turning over hundreds of millions of pounds. But, I was ready for a change and met the love of my life and my now wife - who lived in Coleshill. Still residing in Coleshill, I run a small business serving contacts I formed when, as my wife calls it, "I had a proper job". Passion, energy, and strong business acumen combined with a love of our town mean I feel ideally suited to serve the community of Coleshill South as a Borough and Town Councillor. My politics are based on wanting to make sure that all Coleshillians have the best chance of achieving a happy fulfilling life.

## Keith Brown



I'm Keith Brown, your local Labour Borough Council candidate. Raised and educated in Coleshill and then lured by the bright lights of Birmingham to work in television production as a video editor, I now enjoy semi-retirement as a resident of the Borough.

Coleshill and the surrounding area is a very desirable and distinct place in which to live and work but it has not been immune from years of savage cuts in public service provision as a direct result of Conservative policies nationally and locally.

I see my role as engaging with individuals, groups, and businesses to champion locally determined decisions on the services and projects which the council can then adopt to improve the lives of all residents. I'm a fresh face, with some new ideas, and have the time and energy to spare as well as a love for the area I live in.

## Celia and Mike Banner



Both Celia and Mike have a background in education. Mike has lived in North Warwickshire for over 40 years and prior to retirement, worked as a teacher in a large comprehensive school. His interest is in Art and Design and the development of education with young people. He is committed to engaging with the whole community, but particularly the next generation who deserve all our support to succeed.

Celia worked in a primary school on a large housing estate. Her role was working with children and their families. Helping their development both educationally and socially.

Celia also has a lot of experience in local government. She has served as a Borough Councillor and as a Parish Councillor in North Warwickshire.

She has been a school governor and served on the board of the Hams Hall Environmental Trust. Both Celia and Mike are keenly aware of the destruction of the local area. They feel that a strong representation is needed to express local people's views to help protect their environment.

## Tom Foley



I moved to Water Orton 18 years ago, it is a great place to live. I am a retired 72 year old and I have worked in property maintenance all my working life. I served my community as an elected parish councillor from 2011 -2019 and due to multiple health issues I choose to focus my efforts on my health. I am now committed to serving the electorate of Water Orton at borough council should I be elected. I have been very disappointed by the lack of representation at Borough County and Westminster for residents of Water Orton, I hope to change this and be a strong voice on local issues.

## John Broughton



I strongly believe that a community is a group of local people who share values and identities and that if we work together we can be a strong voice on local issues.

Over the past few years we have needed people who look out for each other and want to help. My regular job is to solve problems and fix issues to make the business work better. I intend to use these skill to help improve the live of local people and our local economy. Whether you need help now or in the future, a strong community is the best way to help. This community needs people to act, who are responsible and fix problems. I will help fix local issues.

# the Coleshill Post

ADVERTISE YOUR BUSINESS HERE

0121 749 7502  
07805 430191

email: [editor.postgroup@outlook.com](mailto:editor.postgroup@outlook.com)

Covering: Coleshill North, Coleshill South, Coleshill Industrial, Water Orton, Curdworth, Maxstoke, Shustoke, Lea Marston, Marston & The Whitacres

May 2023 Issue 111



[postgroupmidlands.com](http://postgroupmidlands.com)

PICK ME UP FREE

EDS

EVANS  
DERRY  
SOLICITORS

High quality, cost-effective legal services

Call us on **01675 464400** or visit [www.evansderry.com](http://www.evansderry.com)

5 Church Hill, Coleshill / 30 Station Rd, Marston Green / 133 Long St, Atherstone

OUR SERVICES INCLUDE

FAMILY LAW

PERSONAL INJURY

WILLS AND PROBATE

PROPERTY



3RD JUNE

THE SUNFLOWER  
POP-UP CRAFT FAIR  
PSYCHIC EVENT  
[Sunflower.2@outlook.com](http://Sunflower.2@outlook.com)

Every 1st Saturday of the month

Between March - November 2023  
(Excluding August)

Marston Green parish Hall  
B37 7BT

11:00 - 15:30

FREE ENTRY • FREE PARKING  
HANDMADE CRAFTS • GIFTS  
REFRESHMENTS • FOOD

07846 064 608



YOU DON'T  
HAVE TO BE  
AN ARTIST  
TO ENJOY  
PAINTING  
KINDNESS  
ROCKS

St Joseph's Care Home residents got creative on Tuesday 4th April painting kindness rocks to support Grace Cares (a not-for-profit, sustainably focussed organisation that collect and sell pre-loved care equipment), get messy with paint and enjoy lots of chatter!

Full story page 6

WALSH  
PODIATRY

Do you suffer from hard skin, cracked heels, thickened & or discoloured toenails?

Worried your feet won't keep up with the family?

Do you struggle to manage your own feet?

Make sure your feet  
are in safe hands

hpc  
registered  
[www.hpc-uk.org](http://www.hpc-uk.org)



tel. 0121 749 6313  
[www.walshpodiatry.co.uk](http://www.walshpodiatry.co.uk)

Our highly skilled Podiatry led team can put you at ease and provide specialist treatment to help your feet look and feel wonderful again  
329 Chester Road, Castle Bromwich, Birmingham, B36 0JG [reception@walshpodiatry.co.uk](mailto:reception@walshpodiatry.co.uk)

Not tried us yet?  
**£5 OFF**  
with this Advert  
\*New Patients Only



*the* **ColeshillPost**

*the* **CastleBromPost**

The Post Newspaper Group is an independent hyper-local tabloid newspaper publisher distributing 2 titles with over 14,000 copies to homes and businesses in Coleshill and Castle Bromwich each month, free of charge.

Our main aim is to provide hyper-local news and information to the community where it would otherwise not be accessible. We also offer the most effective platform for local businesses to promote themselves to their target audience. This benefits the entire community and improves social-cohesion.

Any views, articles and columns expressed in this publication are those of the contributors and not necessarily those of the Publisher, nor indeed their responsibility.

## Advertising in our publications

**In order to deliver The Post free to our readers we rely on advertising revenue from local companies.**

We work with you to create the most appropriate package for your business, after all it's in our interest to make each advert work and keep everybody happy.

We can design professional artwork if needed and offer sound advice based on years of knowledge.

By choosing to advertise with us you are also showing your support for the community and the customers you hope to serve.

## Getting in touch

Sales:  
[editor.postgroup@outlook.com](mailto:editor.postgroup@outlook.com)  
07805 430191

General inquires:  
[serena.postgroup@outlook.com](mailto:serena.postgroup@outlook.com)  
0121 749 7502

## WHY CHOOSE HYPER-LOCAL?

People prefer to buy locally and they trust local print media above all else.

Show support for the community where your customers live.

Hyper-local content - every page dedicated to the local area.

Bringing the community together by making all information available in one place.

Affordable and effective advertising packages to help small businesses promote themselves better and cheaper.

Help to increase footfall on the High Street and boost attendance at local events.

Give groups, clubs and organisations space to promote themselves and let local people know exactly what is available on their doorstep.



# CIRCULATION

### *the* **ColeshillPost**

Coleshill North  
Coleshill South  
Coleshill Industrial  
Water Orton  
Curdworth  
Maxstoke  
Shustoke

Lea Marston  
Marston  
The Whitacres  
*Also dropped in  
Minworth*



### *the* **CastleBromPost**

Castle Bromwich Hall  
Park Hall  
Parkfields  
Green Lane West  
Green Lane East  
Chester Road West  
Chester Road East  
Bradford Road

*Also dropped in  
Shard End and Marston Green*



All our papers also get put in local Libraries, Pubs, Clubs and Garden Centres.

## ALL PLUMBING & HEATING JOBS



- Boilers install & Service
- Bathroom Fitting
- All plumbing heating & Gas jobs

**Boilers Service £60**

Contact us for a **FREE** quote



Call Joe on: 07792 470 504  
[www.jpdeakin-plumbing.co.uk](http://www.jpdeakin-plumbing.co.uk)



# Your trusted local Electrician

Do you struggle to find someone to carry out small jobs?

- ✓ Extra Lights
- ✓ Free Quote
- ✓ Whole Home WIFI
- ✓ Fully Insured
- ✓ New Fuse board
- ✓ Reliable Service
- ✓ Additional Sockets
- ✓ Fully Qualified
- ✓ Landlord and Homebuyer Reports

## Call Tom today

# 01675 591047

[www.finchhattongroup.co.uk](http://www.finchhattongroup.co.uk)



## Social business networking event

May 15th – 6pm til 8.30pm

- We meet up on the 3rd Monday of every month
- Relaxed informal business networking
- No Commitment
- Raise your business profile
- Meet like minded people
- Business card and leaflet table available (bring your literature)
- If you would like to sign up for future presentations (ask a member of the team)



**Price £5 per person**

Bar will be open for refreshments  
Tea and Coffee available

Contact us

email: [networking@biznetlocal.co.uk](mailto:networking@biznetlocal.co.uk)  
call: Serena 07805430191



**OLD SALTEIANS RFC**  
(New Rugby Club)  
Coleshill Road Water Orton,  
Birmingham B461QE



# A&D

**BLOCK PAVING SPECIALISTS**

### WE ARE SPECIALISTS IN:

- BLOCK PAVING
- TARMACING
- SLABBING
- FENCING
- DECKING
- TURFING
- BRICK WALLS
- WASH & RE-SAND DRIVES
- LANDSCAPING & ARTIFICIAL GRASS

FOR A FREE, FRIENDLY QUOTATION CONTACT DEAN BERRY ON:

**TEL. 0121 730 1380**  
**MOB. 07774 458 979**  
[info@aanddblockpavingspecialist.com](mailto:info@aanddblockpavingspecialist.com)  
[www.aanddblockpavingspecialist.com](http://www.aanddblockpavingspecialist.com)



# You don't have to be an artist to enjoy painting kindness rocks



St Joseph's Care Home residents got creative on Tuesday 4th April painting kindness rocks to support Grace Cares (a not-for-profit, sustainably focussed organisation that collect and sell pre-loved care equipment), get messy with paint and enjoy lots of chatter!

The rocks came in various colours and shapes and the residents and volunteers decorated them in bright colourful designs, with a note on the back asking the person who finds it to post a picture on the Grace Cares Facebook page and then re-hide for others to enjoy. After varnishing the residents and the Grace Cares team will be hiding them in the community to see who finds them. Safe to say it was enjoyed by all who attended. Great fun! This is a lovely way for the residents to join in the with the local community and support a not-for-profit that supports older people and care workers across the UK.

If you'd like to support the residents with activities, please contact Laura Birch from St Joseph's Care Home on 01675 434559.



## St Joseph's Care Home celebrates 'Good' CQC rating

In March St Joseph's was visited by the Care Quality Commission, the independent regulator of health and social care in England. While most visits from a regulatory organisation might be met with dread, it was a visit that St Joseph's staff had been eagerly awaiting. At their last inspection in 2019 they were rated 'requires improvement' overall, as the CQC wanted to see that the improvements in the 'safe' and 'well led' areas were embedded and sustainable over the long term from their 2018 inspection.

When Covid hit in 2020 this caused massive disruption within care homes and delayed CQC inspections, with the CQC focusing on inspecting care homes where they had a high level of concern. In March this year the CQC made an unannounced visit, reviewed the areas of 'safe' and 'well led', resulting in a Good overall rating!

Annie Frost, Deputy Manager and Shelley Perryman, Registered Manager, posted the following comment to the St Joseph's Care Home relatives group on Facebook, 'Every single one of us have given our absolute all to get the recognition we deserve and it's finally happened. Thank you to all who gave feedback to the inspectors.'

Our chef, Dejan, was complimented on his care and consideration for someone with dietary requirements. "Dejan, the best feedback I can give you is that the person you catered for who is a vegan said that she was unwell and feeling rough, you presented her with her that special plate of sandwiches, you set out oat milk so she could have a cup of tea and you provided a vegan cake, her words to me were "the way the chef has prepared for me today has made me feel like he gave me a big hug, please thank him for his attention to detail".

We are particularly proud of feedback from staff and relatives who contributed to the report. In the CQC report a senior staff member commented, 'I would 100% recommend this as a great place to work. I love it here. We have a great bunch of staff. I don't have to think twice and tell them what to do as they are always two steps ahead. They ultimately work hard to improve each resident's day.'

Relatives spoke positively of the leadership at St Joseph's. One relative told us, 'The manager is lovely and caring and very positive. The home appears very well managed.'

We would like to say a huge congratulations to the St Joseph's team on their new CQC rating, it's a wonderful recognition of all your hard work and dedication.



## ADVERTISE YOUR BUSINESS HERE

For more information on how to advertise in any of our titles please call:

0121 749 7502 / 07805 430191 or  
email: [editor.postgroup@outlook.com](mailto:editor.postgroup@outlook.com)

# NEED EXTRA STORAGE?

Store it from only

# £20

per week



**Absolute**  
SELF STORAGE LIMITED

[www.absoluteselfstorage.co.uk](http://www.absoluteselfstorage.co.uk)  
07704 955750 | 01675 464446 | [hires@absoluteselfstorage.co.uk](mailto:hires@absoluteselfstorage.co.uk)  
Jubilee Industrial Estate, Gorsey Lane, Coleshill B46 1JU



## Madame Blavatsky lives

Coleshill Drama Group is proud to present "Madame Blavatsky lives", a play in two acts by Joan Greening. The title reference is to Helena Blavatsky, a mystic who was born in Russia in 1831, travelled widely and embraced Theosophy. She died in London in 1891, having succumbed to the flu epidemic which had been a global pandemic during the previous winter.

This modern play, however, is not about the title character, but three great friends, who have looked out for each other since school days. Set in the present day, there are so many themes with which we can all relate. It is cleverly and wittily written, with much comedy arising from the situations faced by Jane, Pam and Lily and their conversational exchanges. The arrival of Maureen, a mystic, throws their lives into intense upheaval.

Directed by Ahmed Ali, the play will be performed at Coleshill Town Hall at 7.30pm on Thursday 11th, Friday 12th and Saturday 13th May. "We are delighted to have Ahmed directing this, his second play with the Group," said Sue Wallace, group chairman and cast member, who together with Alexandra Liggins, Dev Walter and Jenny Maisey constitute the full cast. "Ahmed works in a

most through way, rehearsing each few lines and moves until he is satisfied that it looks good. We are very much enjoying working with him and we are confident that audiences are in for a real treat."

The Group recently performed a short play entitled "The Bench", written by group member, Jon Pegg, in the All England Theatre Festival in Nuneaton in which they were awarded The Nuneaton Arts Council trophy, actors Donna Jardine and Rob Glavey were nominated for best actress and actor respectively, and Jenny Maisey triumphed winning the trophy for "Best Actor in a supporting role". Congratulations to them all.

Tickets for "Madame Blavatsky lives" are available now in Coleshill Library, Gascoignes of Coleshill, Mr.Pinks and Cafe on the Hill in Coleshill, telephone Sue Wallace on 01675 462674, or order online at [coleshilldrama.co.uk](http://coleshilldrama.co.uk). Prices remain unchanged at £10 for full price tickets and £8 for concessions (retired persons or those under full-time education). Car parking is available in Chantry House (donations towards the cost of this facility are much appreciated), and the usual licensed bar will be open from 7.00pm. Come early, take your drinks to your table, sit back and enjoy being entertained.

Coleshill Drama Group Presents...

# MADAME BLAVATSKY LIVES

By Joan Greening

Tickets £10  
Concessions £8  
Includes free parking at Chantry House  
Licensed bar and tea/coffee available

Book tickets online at:  
[www.coleshilldrama.co.uk](http://www.coleshilldrama.co.uk)  
Tickets also available for purchase at:  
Gascoignes of Coleshill  
Mr. Pinks  
Café on the Hill  
Coleshill Library

11<sup>th</sup>, 12<sup>th</sup>, 13<sup>th</sup> May  
7:30 Coleshill Town Hall

# BBC Gardeners' World Live

## returns with a spectacular Show Garden that's fit for a King and a packed programme of highlights



**BBC Gardeners' World Live returns to the NEC Birmingham this summer (15-18 June) with inspiration, achievable take-home ideas and wonderful plants at every turn. Visitors can look forward to spectacular Show Gardens, bountiful Beautiful Borders, and delightful displays by specialist plant growers and nurseries in the Floral Marquee.**

This year's headline Show Garden is A Garden Fit for a King by multi award-winning garden designer, Paul Stone (Eden Project gardens, three Platinum Awards and Best in Show at BBC Gardeners' World Live). The garden marks the Coronation of HM King Charles III and is inspired by the gardens, wildflower meadow and Arboretum at Highgrove, celebrating His Majesty's passion for gardening and concern for the environment. An atmospheric Bothy cottage made from natural building materials will be a particular highlight. Paul Stone will be hosting a series of talks from the garden, sharing advice with visitors on how to recreate elements of the Coronation garden at home.

Two Show Gardens will shine a spotlight on women's health and wellbeing. The Newson Health Menopause Show Garden will be a tranquil space for visitors to find information and advice on menopause and perimenopause, designed by award-winning garden designer, Ruth Gwynn (co-designer of Frances Tophill's Platinum Award-winning Show Garden at BBC Gardeners' World Live 2022). The Liz Earle Beauty Co.'s Botanical Show Garden, with feature plants to showcase the botanical ingredients of many Liz Earle Beauty Co. products, has been designed by Platinum Award winning garden and landscape designer, Lucy Bravington. James Wong, Liz Earle Beauty Co.'s ethnobotanist, will be sharing daily insights into the power of plants from the garden.

Gardening influencer, homesteader and passionate advocate of growing your own food, Lucy Hutchings (She Grows Veg), will be bringing the issue of food security to the forefront with her edible Show Garden, The Secret Homestead. With a dramatic black and white palette, accented by pops of vivid coral and pink, this less-than-conventional kitchen garden will be the setting for daily talks by Lucy and a line-up of leading GYO experts including Stephanie Hafferty and Cloud Gardener UK.

The Association of Professional Landscapers returns with its annual APL Avenue Show Garden Competition, where four contractor members create inspirational, achievable designs for a typical back garden. With the theme of 'Take Me Home', visitors will be sure to find a host of ideas to try, including 'The Chic Garden Getaway' that is designed to make you feel as if you're away on holiday, and 'The Beauty in Small Spaces' which offers three separate garden styles in a single space.

Other Show Gardens include The Garden Organic Backyard Biodiversity Garden designed by Emma O'Neill to inspire visitors to encourage more wildlife into their gardens, The Fontana Garden by Kim Parish Landscapes of Distinction, a homage to 92-year-old Derek Bishop's 14-acre Cornish garden, and The Restoration Garden by Derby College, celebrating the transformation of Derbyshire's Wingfield station, one of the world's oldest railway stations.

Four Showcase Gardens include three winning gardens from the Wildlife Trust Garden Design Competition, a collaboration between Warwickshire Wildlife Trust and Birmingham and Black Country Wildlife Trust, where the winning gardens will be rebuilt after the Show in a permanent home at a flagship Warwickshire Wildlife Trust location. Where There's a Willow by Cathy Perry will focus on naturalistic planting, rewilding and upcycling.

Over in the Beautiful Borders, twenty designers will be providing inspiration for small gardens and challenging spaces by packing compact 9m<sup>2</sup> with imaginative features and plants. This year's theme is My Garden Escape, and Sue Kent, the award-winning garden designer, TV presenter and RHS disability ambassador, makes her debut with a Border that combines her love of colour, scent and painting. Whether you're a first-time grower or a seasoned sower, you'll find the crème de la crème of gardening experts on-hand to offer advice. At the BBC Gardeners' World Live Theatre, Monty Don, Adam Frost, Carol Klein, Frances Tophill and Alan Titchmarsh will be 'in conversation' with Nicki Chapman and sharing practical tips with the BBC Gardeners' World Magazine editors. Theatre sponsor British Garden Centres will host sessions with Chris Collins (Thursday and Friday) and Mr Plant Geek (Saturday and Sunday).

A day at BBC Gardeners' World Live is only complete with a visit to the spectacular Floral Marquee, one of the biggest of its kind in the country, and outdoor Plant Village. A haven for plant lovers, visitors can browse and buy from carefully selected specialist growers and nurseries.

New for 2023 in the Floral Marquee is Hot Off the Potting Bench, a feature display of new plants and varieties, all contenders for the new Peter Seabrook Award for Best New Plant at BBC Gardeners' World Live, launched earlier this year by the Colegrave Seabrook Foundation.

At the Floral Marquee's Let's Talk Plants Stage, expert David Hurrion will be hosting free drop-in sessions with plant specialists and experts. Stage sponsor, Hillier

Nurseries, will take to the Stage to discuss their latest plant launches. At the heart of the Floral Marquee, visitors will find The Plant Experts where Head Gardeners Saul Walker (Stonelands House, Devon), Lucy Chamberlain (East Donyland Hall, Essex) and Matt Biggs (BBC Radio 4 Gardeners' Question Time) will be on hand to share one-to-one gardening advice, so bring your plant queries to get all the lowdown. Plant Expert sponsor, Regent Seven Seas Cruises, will inspire visitors with a daily talk on Plants and Gardens of the World.

Other highlights include a walk-through garden by award-winning Ashwood Nurseries, a celebration display marking the 40th anniversary of Barnsdale Gardens which was founded by Geoff Hamilton, and Floral Marquee sponsor, Legal & General, who will be hosting a Lounge for their Retirement Customers to relax in.

The House Plant Hub features a new Stage, hosted by Ellen Mary and featuring experts including Joe Bagley, who will be sharing tips on how to create a happy home for healthy house plants. House plant fans should head for the House Plant Market for shopping.

For young gardeners, the ever-popular Health for Life School Wheelbarrow Competition for local schools returns. The competition is a celebration of hands-on gardening, teamwork and fun, and gives young people the opportunity to show off their creative flair to tens of thousands of show visitors. Yeo Valley Organics will have a presence at the Show with a larger-than-life floral feature of a planted-up milk bottle.

Tickets for BBC Gardeners' World Live include entry to the BBC Good Food Show Summer, featuring demonstrations, entertaining interviews and book signings with top celebrity chefs, tastings and workshops, street food, and delicious food and drink to taste and buy. The star-studded line-up includes James Martin, Nadiya Hussain, Michel Roux, Ainsley Harriott and many more. Visitors can dine in style by booking a sit-down meal at the BBC Good Food Restaurant, inspired by the country's leading food website, [bbcgoodfood.com](http://bbcgoodfood.com).

Rachel Poletti-Gadd, Portfolio Director - Gardening Division at Immediate Live, organisers of BBC Gardeners' World Events, said: "BBC Gardeners' World Live offers a truly exceptional day out for gardening fans and beginners alike. Plants are the hero of our flagship show and there is no better place to get ideas and expert advice to apply at home straight away. Gardening and growing is for everyone, and our focus is on offering visitors achievable inspiration, practical advice from well-known experts, and plentiful opportunities to get up close and personal with some wonderful plants. With BBC Good Food Show Summer on site too, there's some pretty tasty food to be had too!"

Tickets for BBC Gardeners' World Live at the NEC Birmingham (15-18 June), including entry to BBC Good Food Show Summer, are on sale now at [www.bbcgardenersworldfair.com](http://www.bbcgardenersworldfair.com).





# Property News

## To rent or not to rent?

**By Colin Lewis,  
House & Home**



Back in the late 80's and early 90's the rental department of any estate agency was a minor affair, usually run part time and not given a lot of thought too. In fact, it interfered with the important business of selling houses and therefore given to Joan from accounts to 'sort out'. It wasn't until the boom of the mid 1990's and the introduction of 'buy to let' mortgages that interest in owning a rental portfolio became a topic over the table at dinner parties where they were classed as an investment and a must have if you were to be considered a savvy property investor.

The rental department of my company now plays a major part in the day to day running of our office. A lot of the first

time buyer properties, built in the 1990's, were bought up by investors and to this day are still let out. This of course compounds the problem of a lack of affordable first time buyer homes, but also provides accommodation that the local councils cannot provide.

When we first started to rent out these properties they were normally to younger people acting as a stop gap before they had enough saved to buy their first house, average tenancies were between 6 and 12 months, now that has completely changed. Tenants now see renting as a more flexible way of living. We have many tenants who start off in one bedroom apartments, then gradually move to a two or three bedroom house as circumstances change. They don't want the commitment of running a property or its repairs and upkeep, let alone the initial costs of finding a deposit!

Gone are the days of it being a stigma if you rented a property. Most private rented properties are modern and well kept or they remain empty. Tenants have high

standards, so a new kitchen or bathroom attracts a good rent and landlords know this. Legislation means that rental properties need to come up to certain standards, yearly gas inspections are required, and electrical inspections are necessary to ensure the safety of the tenants. I'm pleased to report that all of my landlords are concerned about how their properties are maintained. They want to make sure they are kept up to standard and that the tenant is happy to live there. I can't always say that about some of the tenants though, but they have a tendency to move on.

I can't see that the rental market will weaken but I can see that Landlord's will be under greater pressure from the government and this will result in a lot of them deciding that it is just not worth the hassle of being a landlord and will sell their portfolio. Will this help the first time buyer market with more affordable housing becoming available? I don't know if it will as renting a property is still an easier and cheaper option to a lot of people, in fact I'm seeing a lot of older people selling up and renting, looking to spend the kids inheritance I wonder?

NWBC BOROUGH AND PARISH ELECTIONS  
THURSDAY 4TH MAY 2023

**VOTE**

# Felicitas Antoinette 'Feli' Freeman



**MEET FELI**

at Orchard Nurseries Cafe  
for Questions & Answers  
from your local  
independent candidate.

**SUNDAY 30TH APRIL 2023**  
Between 11am & 1pm

**VOTE YES TO:**

- Solving current parking and traffic crisis
- Reducing pollution caused by ongoing HS2 construction
- Improving provision and access for our disabled community, young and old
- Better play and recreational facilities for young residents

### Water Orton Matters

Water Orton is the westernmost outlying village in North Warwickshire.

I will be the voice for Water Orton at Borough level and liaise with WCC and neighbouring Solihull & Birmingham districts to achieve a joined up approach to Water Orton matters. Few in Nuneaton, Atherstone or Warwick have ever heard of us!

### Let's do this TOGETHER

I am hoping to secure your trust and vote in the upcoming NWBC Election on Thursday 4th May 2023. I must clarify that I am conservative in outlook, yet I am standing before you as an Independent Candidate. I believe, by being INDEPENDENT, I will not be constrained by any party lines.

I am an Economist and Compliance Specialist by training. Value, accountability, integrity and good governance matter to me personally.

### Key Focus on Water Orton Matters

#### Parking

Traffic within, and through, the village is undoubtedly at crisis point. I will campaign for a more frequent and coordinated police and traffic enforcement officer presence. I will monitor and report outcomes.

#### Pollution

Water Orton Village is seeing profound change to its living environment. Noise, dust and air pollution already have become a problem. Once Bromford Tunnel drilling starts, it is anticipated that there will be in excess of 450,000 HGV movements in and around the village. The resulting emissions alone will impact negatively on our quality of life (air quality, road safety noise). On your behalf I will vigorously engage all stakeholders with a view to reducing emissions, significantly improving environmental controls; and starting a tree planting programme as soon as possible.

#### Play

Water Orton Village excels with varied sports facilities offering most villagers an opportunity for a healthier lifestyle. Yet it is a shame that for our youngest village residents, the play and outdoor provision is poor. There is currently no provision for disabled residents' needs, be they young or old. If you entrust me with your vote, I will engage and act as a change catalyst in order to secure support and develop funding models.

#### People

I will endeavour to support to my best ability the outstanding work of Water Orton Community Action Group, Water Orton Culture and Heritage Group and Water Orton in Bloom.

### My pledge to you as a VOTER

- I will attend Parish and North Warwickshire Council meetings regularly and publish my attendance record.
- I will engage with WCC, HS2/BBV and regularly update residents on progress.
- I will hold regular surgeries within Water Orton. Additionally be assured that my door at Attleboro Lane will always be open to concerned residents.
- I will actively seek out knowledge training to improve my decision making capability on your behalf.
- I embrace positive change and will endeavour to live up to the high standards expected of a Borough Councillor.

**VOTE FELICITAS ANTOINETTE  
'FELI' FREEMAN**

 /fafreeman

Promoted and funded by Felicitas Antoinette Freeman, 19 Attleboro Lane, Water Orton, B46 1SB.  
© 2023 Felicitas Antoinette Freeman. All rights reserved.

I want you to vote for me because Nobody can do Everything  
but Everybody can do **Something**

## NOT MADE YOUR WILL YET? DOES IT WORRY YOU THAT...

Your children may NOT inherit all of your home or your hard earned savings... but the Government and others could!

*Care Fees, Inheritance Tax, Huge Legal Fees and more devastate thousands of families, often unnecessarily.*

**We come to you at a time to suit you for a FREE home visit.**

With the **RIGHT WILL** and advice, you can help ensure the **maximum possible** goes to those you love!

It all starts with a Will from **£95.00+VAT\***

\*standard basic Will

**ACCORD**  
LEGAL SERVICES LTD

 Institute of  
Professional  
Willwriters  
MEMBER

 APPROVED CODE  
TRADING STANDARDS UK

**Confused? Concerned? Call Paul!**  
**0845 055 9415 | 07980 780709**  
**paul.palmer@accordwills.co.uk**

 **COLESHILL**  
Windows And Doors Ltd



**OVER 20 YEARS EXPERIENCE**

*At Coleshill Windows & Doors Ltd we believe in doing business the right way, by putting you first. That means no hard sales push, fair prices and only the highest standards of work.*

- ✓ Windows & Doors
- ✓ Composite Doors
- ✓ Conservatories
- ✓ Equinox Warm Roofs
- ✓ Roofline & GRP Roofs

**Tel: 01675 464 661**  
**Mob: 07789 855655**  
**www.coleshillwindows.uk**

*The local, family owned  
business you can trust!*

# Care Fees... who pays?

**If you need long term care in the future, your assets will be assessed to determine whether or not you will be entitled to funded care.**

**If it is decided you are not eligible, you will have to fund your care- either in part or in full- yourself.**

You are deemed to be able to meet the cost of care if you hold over £22,000 (in Wales) or over £23,250 (in England). If you own a property this may or may not be included in the assessment depending on individual circumstances; if you are a sole owner occupier, your property will be taken into consideration.

**What if I have placed my assets into Trust?**

If you have already transferred assets into a life time trust, such as our Family Home Protection Trust or the Estate Protection Trust, then the value of those assets should not be included in your financial assessment.

With the cost of residential care rising to an average of £45,000 per year (in some parts of the country exceeding £60,000 per year), and with around half of Britain's 440,000 care home residents funding their own care home fees, it is now more important than ever to plan ahead for the future.

**Paying for care fees**

The are 3 options for funding:

1. Continuing care from the NHS dependant on physical or mental health need
2. You fund your own care
3. Local Authority funds your care  
If your health needs are not assessed as at a level to require NHS funding, then you will be means tested to determine your ability to pay. The local authority will consider both the capital you own and the income you receive to determine if they should fund your care.

**What types of capital are means tested?**

Examples of the types of capital that can be included are as follows:

- The family home
- Cash in the bank
- Stocks and shares
- Land

Some capital may be disregarded permanently or temporarily. Such as:

- Investment bonds which are linked to life assurance
- Capital held in certain types of trust
- Personal possessions

If the financial assessment determines that you have capital over the sum of £23,250 (England) or £22,000 (Wales) then you will be required to meet the full costs of your fees. Once your assets are depleted to this level, the Local Authority will contribute to the costs of your fees.

**What income will be considered?**

As well as your assets, the local authority will also look at any income you receive, such as:

- Most benefits
- Trust income
- Private/Occupational pension

You'll be expected to fund £1 of income for each £250 of capital that you hold between £14,250 and £23,250 (England only)

Some income is disregarded temporarily or permanently:

- 50% of an occupational pension if the resident is paying that to their spouse/ civil partner
- £10 per week of a war widow's, war widower's or war disablement pension
- War widow's special payments

How can I protect against care fees depleting my estate?

Contact us today for FREE consultation to find out how to protect your home, savings and more.

**Paul Palmer**

**Senior Estate Planning Consultant**  
**Accord Legal Services Ltd**

**Tel: 07980 780709**  
**or 0845 055 9415**

**E: paul.palmer@accordwills.co.uk**

MANY MORE OFFERS IN STORE AT DRINKS 4U

MANY MORE OFFERS IN STORE AT DRINKS 4U



# Celebrate King Charles's Coronation with drinks at drinks 4U!



GROCERIES NOW SOLD AT COLESHILL

# DRINKS 4U

National Lottery available at all 3 branches



**WOW DEAL!!!**



**MOËT CHANDON BRUT 75CL**  
**£33.99 each**

**WOW DEAL!!!**



**COOP IRRESISTABLE PROSECCO 75CL**  
**2 FOR £15.00**

**WOW DEAL!!!**



**I HEART PINK GIN 70CL**  
**£9.99 each**



**KOPPARBERG FRUIT GINS 70CL**  
**£16.99 each**



**BELLS WHISKY 70CL**  
**£13.99 each**



**GRANTS WHISKY 70CL**  
**£13.99 each**

**WOW DEAL!!!**



**HARDYS VR WINES 75CL**  
**ANY 2 FOR £9.99**



**BLOSSOM HILL VARIETAL WINES 75CL**  
**ANY 2 FOR £11.99**



**YELLOW TAIL WINES 75CL**  
**ANY 2 FOR £12.99**

**WOW DEAL!!!**



**HEINEKEN BEER 12x330ML**  
**£8.99 each**



**MADRI EXCEPCIONAL BEER 10x440M**  
**£9.99**

**WOW DEAL!!!**



**KRONENBOURG 1664 BEER 20x275ML**  
**£9.99**

**WOW DEAL!!!**



**STRONGBOW CIDER 440ML**  
**8 FOR £6.99 24 FOR £17.99**

**WHEN ITS GONE ITS GONE!!!**



**BAILEYS CREAM & ETON MESS LTD EDITON 70CL**  
**£9.99 each**

**WHEN ITS GONE ITS GONE!!!**



**ECHO FALLS BOTANICAL WINES 75CL**  
**ANY 2 FOR £5.00**

DISPOSABLE VAPES • CIGARETTES AND TOBACCO • LOTTERY • SOFT DRINKS

CASH MACHINE/ATM @ CASTLE BROMWICH STORE!

GROCERIES NOW SOLD AT COLESHILL... BREAD, MILK, PET FOOD AND MORE!

358 BRADFORD ROAD, CASTLE BROMWICH, B36 9AD

**0121 270 7150**

MON - THURS 9AM-9PM, FRI & SAT 9AM-10PM SUN 10AM-9PM

1-3 BRIDGE VIEW, LOWER HIGH STREET, COLESHILL B46 1BE

**01675 620 581**

SUN - THURS 10AM-8PM FRI & SAT 10AM-9PM

1876-1878 PERSHORE RD, COTTERIDGE, BIRMINGHAM B30 3AS

**0121 516 6530**

SUN - THURS 10AM-9PM FRI & SAT 10AM-10PM



ALL MAJOR DEBIT & CREDIT CARDS ACCEPTED



# Hello from your local Slimming World groups



Easter has been and gone and in our groups we are helping our members to get ready for summer, which officially starts on June 21st, so no time to waste! The old saying comes to mind “summer bodies are made in the winter” and as its already Spring we’re very focused on helping our members with changing old habits to new grooves. Like, how to navigate their way successfully through celebrations ahead like the upcoming bank holidays and the Coronation. With the support members get in group they’ll know how to successfully manage social events without ever having to miss out.....empowered with the tools to slim for life! Don’t worry if you haven’t started yet, there’s still time to join one of our friendly groups and achieve your own summer goals. Either pop along to group or give one of the consultants a call for more information, they’ll all be happy to help.

This month we wanted to share Kerri’s story with you. Not only a fabulous 11 stone weight loss but busting the myth that eating healthily costs more. Read on to see how Kerri managed to save £100 a month after changing her eating habits, and there’s a tasty Slimming World recipe for you to try too.

Wishing you a happy and healthy month ahead... Toni x (07971 686 698)

**‘I’ve saved £100 a month on food since joining Slimming World’**



I've In January 2021, weighing 22st, I fell seriously ill with Covid and was hospitalised for several days. Because I felt so confused and my speech was slurred, the doctors ran extensive tests. It turned out I had blood clots in my brain, some of which had haemorrhaged. The consultant told me that being morbidly obese had been a major contributing factor. I was put on lots of medication and, throughout the year, I gradually got better. I didn’t lose any weight, though – quite the opposite. In January 2022, I decided enough was enough and, determined to make a change, I joined my local Slimming World group.

I remember feeling really nervous walking into the group, as I was the heaviest I’d

ever been. Everyone was so welcoming and supportive, though. Best of all, I lost 7lbs in that first week, and I absolutely loved that I could slim down by eating real food. I’d tried diet shakes and packets before, and they just weren’t sustainable.

Although I’m lucky to have a close-knit family of my own, I see my group as my second family. We’re all in it together, and we understand the challenges of trying to lose weight. We talk openly, we never judge and there’s such a warmth between us – we really do see each other through the highs and the lows.

Being a single mum and a teacher, I was worried it might cost more to eat healthily, but I’ve actually saved around £100 a month on my food bills because I’m not buying ready meals and takeaways any more. If I think back to how I ate before, I wasn’t cooking... I was just putting convenience food in the microwave.

Now I’m eating much more fresh food and I genuinely enjoy cooking. I make healthy versions of my favourite meals, like spaghetti bolognese, and because they’re so nutritious and filling, I never feel hungry. I even use up all the vegetables in my fridge these days – they usually went to waste before! At weekends, I make a big batch of soup and cook meals in bulk, to make sure I’m prepped for the week ahead. The recipes on the Slimming World app are gorgeous – my favourite is the chicken chow mein, and I add loads more vegetables to make it go further. I feel in control of what I’m eating for the first time in my life.

Before I lost weight, I felt so lethargic, and

my knees and ankles would hurt after a day of standing up in class. Now I have so much more energy. I live with my teenage son, Nic, in a fourth-floor flat, and when I was at my biggest, I’d dread the lift being out of order. It’s no bother these days and I don’t get out of breath at all going up stairs. I’ve started doing Zumba twice a week, too, after hearing my fellow members talking about activity. In fact, one of the women from my group is the instructor! I love Slimming Worlds activity videos as well, and I walk 10,000 steps a day.

My friends at work say I’ve inspired them to eat more healthily, which is lovely, and some of my students’ parents have told me they thought I was a new teacher! I’m 11st lighter and I’ve dropped five dress sizes, from a 22 to a 12. I’m enjoying eating delicious, proper food and feeling in control. And not only is my plate a lot more colourful lately, my wardrobe is, too, as I no longer want to just blend into the background. I have a brand-new mindset and so much more confidence.

Kerri’s story supports new research showing that 83% of Slimming World members say it’s possible to lose weight on a budget, thanks to all the support and advice they get in group or on Slimming World Online. That’s compared to 51% of the general population, who say that spiralling costs make it harder to eat healthily.

## Spaghetti Bolognese

Lean mince, flavoursome vegetables and filling pasta – it's a Food Optimising feast!

Ready in 40 mins Serves 4 | Syn free



### Ingredients:

- Low-calorie cooking spray
- 2 shallots, finely chopped
- 2 garlic cloves, crushed
- 350g lean beef mince (5% fat or less)
- 225g button mushrooms, thinly sliced
- 1 x 400g can chopped tomatoes
- 280ml hot beef stock
- 1 level tbsp Worcestershire sauce
- 275g dried spaghetti

### Method

1. Spray a non-stick saucepan with low-calorie cooking spray and place over a medium heat. Add the shallots and garlic and cook for 2-3 minutes, or until just softened. Stir in the mince and cook for 2-3 minutes until browned. Drain any fat from the mince.
2. Stir in the mushrooms and cook for 1 minute. Add the tomatoes, stock and Worcestershire sauce. Season lightly and bring to the boil. Reduce the heat and simmer for about 15 minutes, or until reduced and thickened.
3. Meanwhile, cook the spaghetti according to the pack instructions, until just tender. Drain and divide between 4 serving plates. Top with the bolognese sauce. Serve sprinkled with grated fresh Parmesan cheese if you fancy (this adds 1 Syn per level tbsp).



# Slimming World taste the *freedom*

Contact your local Slimming World Consultant and join a warm and friendly group today!

## Monday

- Castle Brom** - The Baptist Church, 5.30 & 7.00pm Claire - 07917867577
- Tile Cross** - St Peters Church, 4.00 & 5.30pm Nataley 07939 949136
- Yardley** - St Edburghas Church Hall, 9.00am, 3.30 & 5.30pm Julie 07530 552653

## Tuesday

- Coleshill** - The Catholic Church (sacred Heart & St Teresa) 3.30pm, 5.00pm & 6.30pm Toni 07971686698
- Kingshurst** - Seeds Of Hope, St Barnabas CH, 5.00 & 6.30pm from 28th March Diane 07432 123206
- Kitts Green** - Evangelical Church, 5.30pm Becki 07864 872816
- Shard End** - Aylesford Hall, 9.00am & 10.30am Donna 07516 726534
- Hay Mills** - Hay Mills CC, 9.30am Amy 07904 242379

## Wednesday

- Castle Brom** - Arden Hall, 9.30am Diane 07432 123206
- Castle Brom** - St Clements Church, 3.00, 4.30 & 6.00pm Nataley 07939 949136
- Marston Green** - The Parish Hall, 3.30, 5.30 & 7.00pm Jacqui 07814 675180
- Water Orton** - The Link, 5.30 & 7.00pm Paul 07505708121

## Thursday

- Castle Vale** - St Cuthberts Church, 5.30pm, Richard 07733820994
- Chelmsley Wood** - The Fordbridge Centre (by Asda), 5.30pm, Jacquie 07957133435
- Sheldon** - St Thomas More, 4.00, 5.30, 7.00pm, Jayne 07453 348184
- Smiths Wood** - SJB Centre, 5.00 & 6.30pm Nataley 07939 949136

## Friday

- Chelmsley Wood** - The Family Tree, 9.00am Jayne 07453 348184
- Sheldon** - St Thomas More Church, 9.00am Jacqui 07814 675180

## Saturday

- Chelmsley Wood** - Three Trees Community Centre, 9.00am Michael 07957 510533
- Chelmsley Wood** - The Family Tree, 8.30 & 10.00am Jayne 07453 348184
- Castle Brom** - The Baptist Church, 8.00 & 9.30am to Donna 07516726534
- Bordesley Green** - St Pauls Church, 9.00am Maria 07974 805252
- Sheldon** - St Thomas More, 7.30 & 9.00am Jacqui 07814 675180



 [slimmingworld.co.uk](http://slimmingworld.co.uk)



## YOUR LOCAL GARAGE DOOR SPECIALIST

### ALL TYPES OF GARAGE DOORS & FRONT DOORS



We are a family run business that carry out repairs and new installations

**Great Choice • Great Quality • Great Service**

**CALL US ON: 01827 236090**

email: [info@kingsburygaragedoors.co.uk](mailto:info@kingsburygaragedoors.co.uk)



# Fun Craft Event at TRWI

On the 20 March, the Twin Rivers Women's Institute had a fabulous evening at their annual fun crafting event. The main room at Coleshill Town Hall was filled to bursting with willing attendees, keen to learn from four crafting experts.

Allison from The Crafty Cottage Garden demonstrated the art of paper quilling onto card - strips of paper bent and glued into lovely filigree flower displays. Perfect for greeting cards. Dawn, one of the group's own members, helped the ladies make bookmarks out of felt fabric in the shape of a rabbit's head.

Next we had Claire from Amber Jean Flowers who had the ladies cutting, sticking and pinning beautiful flowers into buttonholes, perfect for weddings or corsages. Finally there was Karen from Crafts with Karen who delighted everyone with her macramé demonstration. She had everyone making feather-like key rings

Everyone went away thrilled with having made four items and learned a raft of new skills. One lady remarked as to how welcoming Twin Rivers Women's Institute are, and how helpful the group was to anyone who had eyesight and hand/wrist difficulties; that is what TRWI's ethos is, to provide a non-judgemental and safe place for all ladies to learn, socialise and make new friends.

If any of your readers would like to join Twin Rivers, we hold event's every fourth Tuesday of the month in the Town Hall from 7.30pm to 9.30pm. Free to members, £5 to non-members. For further information, email: [twinriverswimembership@gmail.com](mailto:twinriverswimembership@gmail.com). All ladies welcome.

#### Other upcoming events:

- 23 May - WI Resolutions and Quiz Night!
- 27 June - First Aid Training with Pete
- 20 July - Cake Decorating



# Water Orton Ladies Club

How time flies, when you're enjoying yourself and that's something we definitely do at our afternoon get-togethers in The Pavilion in Openfield Croft in Water Orton every third Thursday of the month! Already this year, we've welcomed some lovely new members and we are always happy to have visitors join us for a cuppa and a piece of cake.

Coming up we have our day trip to Shrewsbury, the county town of Shropshire, on June 15th to look forward to! Shrewsbury is such a lovely town to spend a day - lots of Tudor style black and white buildings and higgledy-piggledy streets with peculiar names and great shops - it is said that Shrewsbury's Wyle Cop has the longest run of uninterrupted shops anywhere in the country! There's an award winning market hall, a medieval red-brick castle, a regimental museum and a riverside to explore. St Chad's Church has a unique circular nave and St Mary's has beautiful elaborate stained glass windows. Yes Shrewsbury has something for everyone! We'll take you there by coach, for just £13, departing from The Link in Water Orton at 9.30am and leaving Shrewsbury for home at 4.30pm. This trip is open to all, so why not treat yourself to a day out and come and join us!

And why not come and take a look at us on one of our Thursday afternoon meet ups? We start at 2pm and after entertaining you with an interesting speaker and tea and cake we send you off home about 4pm. Our forthcoming meetings are May 18th, August 17th and September 21st and then we'll be off on another trip in October!

If you would like further information or you'd like to join us on the Shrewsbury Trip in June, please give us a call. Liz - 07811 147728 or Sue 0121 747 4366



## The Shabby Attic

The shabby Attic is now buying precious metal, we will take a look at anything you bring in and give you a fair and honest opinion and hopefully a cash offer on the spot!

If you have any unwanted High End Watches like Rolex etc. Gold/silver or pieces of jewellery then why not see if you can turn them into cash.

- We will also buy your broken or damaged Jewellery too -

Competitive prices given

You could be sitting on a fortune - you never know?

82 High Street, Coleshill B46 3AH Tel.07528964681

# COLESHILL HUB



the heart of your community



Sumner Road, Coleshill  
Tel. 01675 462517  
Opening Hours. Mon to Fri  
10:00 to 13:00  
[www.coleshillhub.org.uk](http://www.coleshillhub.org.uk)

## COLESHILL TOWN COUNCIL CORONATION EVENT

Come together at the Croft on  
Saturday 6th May 4pm to 10pm.  
Parking available at Chantry House.  
Bring your own picnic and drinks,  
live music including Coleshill Town  
Band and the evening will end with  
a fireworks display.

## FREE Local Services for Local People

### WARM HUB

Tues to Thu 10 to 1  
in the Town Hall,  
Community Centre  
(Tues Only). Drop  
in for a chat or join  
in activities if you  
wish.

Free refreshments.

### INFORMATION

Help and support for  
any enquiries or  
issues such as:-  
Blue Badges, Driving  
Licence, Passport  
Applications, Online  
Benefit Forms and  
much more

Access to  
many partner  
services,  
groups &  
agencies – see  
some  
examples in  
boxes below

Parkinson's Cafe  
Memory Cafes  
(Coleshill/  
Water Orton)  
Young at Heart  
Stitch Club

SUPPORT and  
SIGNPOSTING  
Carers Trust  
CAB (Citizens Advice  
Bureau)  
MIND,  
Vision Support

Keep Fit &  
Natter  
Walking Sports  
Art & Crafts  
Group  
Walking Tours  
and more!

# COLESHILL CIVIC SOCIETY

## Missing Buildings and Spaces 1

By John Hoyle

I have covered the roads that the Civic Society have most historical photographs for and decided to select some of the iconic buildings and spaces of Coleshill which are no longer with us. I will not show how they look now, instead ask that you go and compare the old look with the current look. For the future it is important that the development of the town is recorded so that the old and new may be compared in the future. Please take your camera or use your smart phone to take photos where changes are taking place.



The first photo is probably one that the vast majority of Coleshill Folks will relate to. The Back Lane School or Coleshill Parochial School. The school was first opened in 1872. It had many alterations over years

but retained, for many years the toilets on the far side of the playground. I have heard many comments about them! The extension, an additional classroom may be seen on the left, sited in the playground it was a temporary building with large glass panels. I think Mrs Robson used this room, cold in winter and hot in summer.



The Cozy Café situated between Blackmore Garage and the Cameo shop. The whole group of properties became unused. This building was formerly The Vine Inn known as Coniston House, property developers became interested. Finally a development was agreed and it became the Coleshill Hotel or perhaps just The Coleshill. If you look carefully at the hotel you will see that the garage has gone but the café and Cameo shop have been skillfully integrated into the Hotel frontage. Note the petrol pump on the left of the photo. Much of the original buildings may be seen in the current Hotel Buildings. The contractor only managed to

gain planning permission by incorporating much of the original frontage.

A well remembered building on the High Street, known as Childs Fish shop. Situated on the cross roads. They sold wet fish and also fish and chips. There was a small café inside the shop. It was owned by Frank and Peggy Childs. Frank at one time ran the Bell Inn and he has gained some fame by his account of the death of the elephant which Peggy recorded. Peggy of course ran the wool shop on the High Street for many years.



At the junction of Park Road and Parkfield Road was this strange building, a Georgian Coach-House. It was at the back of Miller's Outfitters shop on the High Street and also formed one side of the Swan car park. It was demolished in 1972 and has been replaced by the drive to the new library and 'Police Station'.



If anyone has any corrections or suggestions about future articles please contact me through the Post Editor or Colin Lewis at House and Home on the High Street.

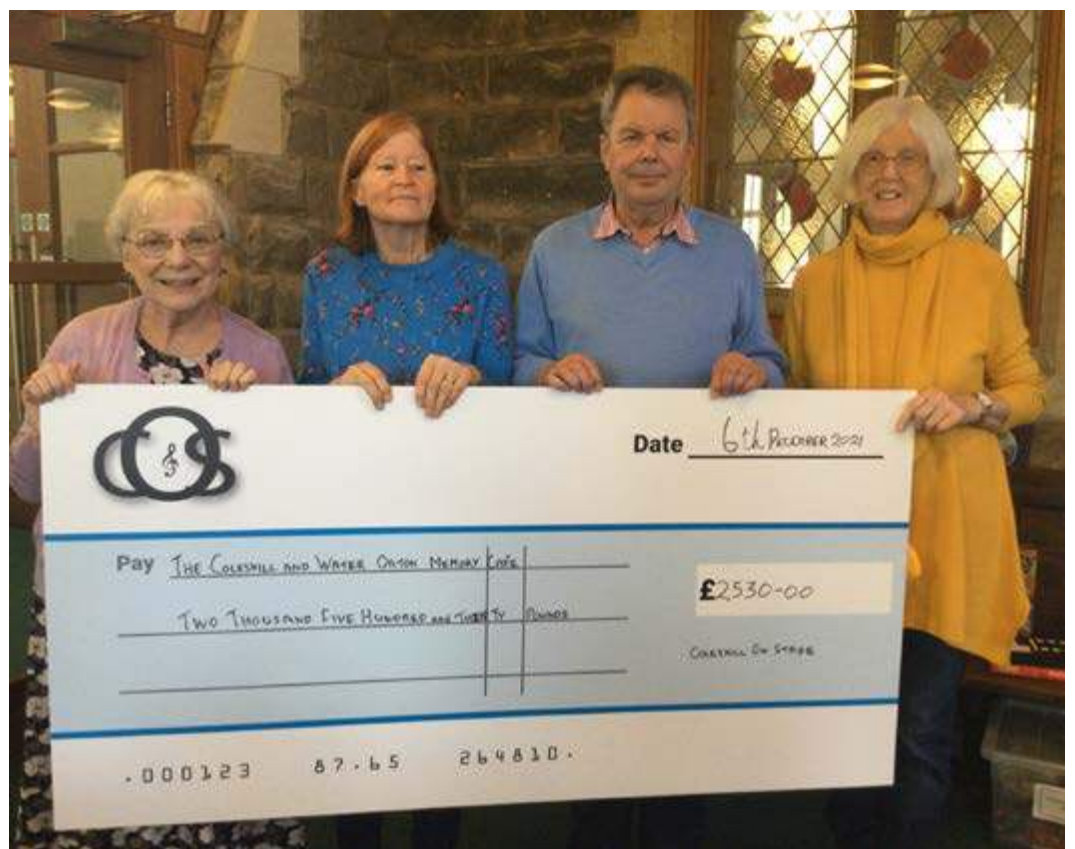
## Coleshill on Stage charity donations

Just a few days before the Covid Lockdown Coleshill on Stage presented a concert of Songs from the Musicals, it was to support the then Mayor of Coleshill, Adam Richardson, Charity fund raising. Funds from the concert were donated to The Warwickshire Air Ambulance and the Coleshill and Water Orton Memory Cafe.

Due to Covid restrictions there were delays in the presentations of the cheques but we are pleased to announce that each Charity received £2500.00.

We are all aware of the amazing work that The Warwickshire Air Ambulance carries out each day saving lives. We hope that in some small way this will enable them to continue with their remarkable work.

The Coleshill and Water Orton Memory Cafe was set up and is run by Christine Claridge along with her brother and sister-in-law Peter and Rosemary Hyde.





# Our plan to make North Warwickshire an even better place to live



## PROTECT THE GREEN BELT AND OUR NATURAL ENVIRONMENT

We will use planning laws to ensure new homes and commercial developments demonstrate good design, bring benefits to local communities and are sensitive to residents' needs and quality of life. We are proud that we live in a rural community and we will protect and maintain its beauty.



## MAKE OUR BOROUGH GREENER AND CLEANER

Our investment in a state-of-the-art recycling centre means we will recycle more, generate more income through selling recyclable materials and, importantly, stop rubbish going to landfill. We will deliver our Climate Change Plan working towards the use of clean energy and net-zero activities across the council.



## KEEP COUNCIL TAX LOW

We will prioritise efficiency and effectiveness to ensure the council continues to make savings whilst maintaining and improving our services. We have secured £2million in savings with no reduction in council services. We will make difficult decisions when necessary to ensure value for money for you and your family.



## SUPPORT LOCAL BUSINESSES AND HIGH STREET ECONOMIES

We will support our local businesses and high street economy ensuring local jobs for local people. We will increase apprenticeships and ensure our school leavers and residents have the skills that employers need. We are proud that North Warwickshire has the highest employment rates in the Midlands.



## TACKLE FLY TIPPING

We have invested £65,000 to tackle fly tipping including installing artificial intelligence surveillance and evidence gathering technology. We pride ourselves on prompt responses to reported incidents; around 1,400 fly tipping cases have been cleared within a day. We will work with the police to prevent and prosecute fly tippers.



## IMPROVED LEISURE SERVICES

We will enhance our facilities to help our communities be fit and healthy. We will build a new leisure hub in Polesworth and we are seeking funding to improve Atherstone Leisure Centre. We will improve cycle routes and work with our hospitality sector to make North Warwickshire a great place to visit.



## PROVIDE COST OF LIVING HELP

We provided significant support to local people and businesses during the pandemic, we will continue to support those in need through the cost of living challenges. We will work with parish councils and voluntary groups to help hard-working families with practical steps to tackle the cost of living.



## WE ARE LOCAL PEOPLE WORKING FOR LOCAL PEOPLE

We understand the great benefits of living in our area and also the challenges we face. We listen to residents and we do all we can to help them. We have secured £1.9 million from the UK Shared Prosperity Fund for investment in local communities to help vulnerable people and enhance our communities. Your priorities are our priorities.

On Thursday 4th May vote for the strong local team that will deliver for you.

 Vote Conservative

# OUR CANDIDATES AND PLEDGES

**Colin HAYFIELD**



**Caroline SYMONDS**



## COLESHILL SOUTH

We have been honoured to be Councillors for Coleshill South for the past 4 years and are asking for your support once again this May. We understand how decisions can affect the town and the community we care about, we would like to be able to continue to represent you and ensure that the Coleshill voice is heard.

We have embarked upon a parking project, securing £1m of funding to improve parking across our town. We have listened to your concerns about parking around our schools, we are working with Warwickshire County Council to make our roads safer, particularly on Wingfield Road, Packington Lane and Coventry Road; engaging also with the police to improve driver awareness. We have supported plans to install traffic lights at the Green Man/Blythe Road crossroads to reduce accidents and increase safety for both pedestrians and drivers.

Protecting our community is a priority, a community that came together to support each other and the most vulnerable during the pandemic. The community spirit seen then

has not been lost and we both work alongside many volunteers to deliver support for Coleshill through providing community grants and hands on support to individuals and local groups.

Seeing the community come together recently to save our bookshop shows how passionately residents feel about our High Street. We have supported the trial of a new street cleaning machine, put forward a case for longer free on street parking, financially supported events to promote Coleshill, worked with the Love Coleshill and now the Coleshill Partnership to engage with both business and residents to ensure that our high street can thrive and be relevant for 2023 and beyond.

We are fiercely protective of our Green Belt. Despite the ongoing impact of HS2, we will continue to push for further woodland planting to the West of Coleshill and seek to strengthen our Local Neighbourhood Plan. Our town has a proud heritage as a historic market town which deserves to be protected and celebrated.

*Caroline and Colin*

## COLESHILL NORTH

We are local people who live and work in Coleshill. We have raised our families here, are passionate about the area and are proud to live in a town where community and heritage matter. If elected to represent you as your councillors we will not only stand up for Coleshill and its residents but will do so with drive and enthusiasm.

We will work hard to ensure Coleshill has safer streets and safe roads. We'll work closely with police to tackle crime and anti-social behaviour. We will work to address and control the parking of HGVs along the Station Road, preventing them and others parking on the grassed verges. We are also supporting the installation of traffic lights at the Green Man pub crossroads and the Cole End Bridge.

We will protect the heritage of Coleshill. This involves working with local partners to protect and enhance our green spaces. We will fight any further erosion of the Green Belt and champion mitigation measures including the

planting of trees to create green walls for HS2 construction.

Our local businesses are at the heart of our community and we will work with them to help them thrive. We will help to clean and tidy up our town, making it an attractive place for shoppers. We will push for the long overdue road resurfacing for our High Street and other damaged roads.

We're calling for more affordable housing in our town as well more care for the elderly and most vulnerable.

We will be councillors who are contactable and approachable and will stay in touch with our residents through local social media, as well as by phone or email. So, if you are looking for local councillors with community ethos and values, we believe we are the right candidates to represent you. Please vote for us on May the 4th.

*Peter and Colin*

**Peter FOWLER**



**Colin LEWIS**



# YOUR PRIORITIES ARE OUR PRIORITIES

**Sandra SMITH**



**Martin WATSON**



## **CURDWORTH, NETHER WHITACRE, WHITACRE HEATH, LEA MARSTON, MARSTON, WISHAW AND MIDDLETON**

We are both experienced local Councillor's having served our community on the Borough and County Councils for the past two years. We have also both been actively involved with our respective Parish Councils for many years.

These are important local elections and we are confident that we are best placed to support you and your families with local issues. We are both keen supporters of local causes we are always ready to hear your concerns and help where we can or signpost to outside organisations.

Like you, we have been impacted by the external influences that affect our peace in Curdworth. Whether that be HS2, Birmingham Airport flights, car boots or unsociable noise, we will do everything we can to act and protect our peace. We will continue to engage with local residents, police and local authorities to ensure organisations and individuals are held

accountable.

We are committed to keeping our roads safe, and most of them are. Nevertheless, there are still some locations in Curdworth that need attention. We will support measures to improve safety on The Whitehorse crossroads, Bodymore Heath Lane and the A446, which remains far too dangerous.

We are passionate about the rural nature of our villages and will continue to campaign to protect our precious Green Belt. We will continue to voice concerns where we believe planning applications are not in the residents' best interests. We are firmly against the Truck Stop at Hams Hall.

You can trust us to be a strong and active voice for our village.

*Martin and Sandra*

## **FILLONGLEY, SHUSTOKE, MAXSTOKE, CORLEY, ASTLEY AND THE PACKINGTONS**

We are both proud to currently serve on the Borough Council, and we will use all of our experience and abilities to represent you in North Warwickshire effectively. As the leader of the Council, David has ensured that Council Taxes have been kept as low as possible, making the Council leaner and much more efficient during difficult times.

Mark has lived in Maxstoke for 14 years and is currently Chairman of the Planning Committee. He has defended the Green Belt, our countryside, and historic areas since he was first elected to the Council in 1987.

We both care passionately about protecting our Green Belt for future generations. We will do everything we can to stop inappropriate development, keep our area green and demand any new development encompasses our

approach to 'build beautiful'.

Fly tipping is a scourge on our local area. We will ensure that those caught are prosecuted to the full extent of Council powers, including extra resources to identify those responsible. We guarantee the Council will continue to act quickly to clean up reported cases.

We will ensure the Council promotes agricultural diversification as far as possible and support local businesses to grow and prosper. A strong local economy benefits us all, with more well-paid jobs and careers to ensure that local people can live and work in our beautiful villages.

Please help us to continue to look after local people's best interests by voting Conservative on May 4th.

*David and Mark*

**Mark SIMPSON**



**David WRIGHT**



**Mick LEE**



**David REILLY**



## **WATER ORTON**

It's been a busy four years since the last election. We hope you agree that we have worked hard for the village and fully played our part in keeping Water Orton a great place to live, despite the huge challenges of HS2.

We are local people. Mick and his family live in the village and are active contributors to community life, and Dave's connections with the village go back over fifty years. We are proud of Water Orton, and we care about our community.

We will work with partners to slow traffic on Birmingham Road and Marsh Lane. We will undertake speed monitoring throughout the village and fight for funding for engineering work that slows speeding vehicles.

We will continue our work with village sports clubs and our school to provide exercise and fitness opportunities for young and old alike. The Warm Club exercise sessions have been a fantastic success. We will now run this for a year with the physiotherapist guiding the principle of 'use it' or 'lose it' with sympathetic movement for all abilities.

We will continue to protect and enhance our shared heritage and precious green spaces within and around our village, and work with volunteers and partner organisations to create opportunities for community and personal wellbeing.

You will have two votes on 4th May, please vote for Mick Lee and Dave Reilly.

*David and Mick*

# LOCAL PEOPLE WORKING HARD FOR LOCAL PEOPLE ALL YEAR ROUND

Together we have all lived through an unprecedented period since the last local elections in North Warwickshire. The global pandemic inflicted huge challenges on us all and the response needed from your local Council was extraordinary. Under the leadership of your local Conservatives, North Warwickshire Borough Council delivered essential services and supported residents when they needed it most. From vital grants to keep local businesses trading to organising food deliveries for the most vulnerable, the Conservative-run Council was there for you. We've now emerged from the pandemic in a stronger position than most local authorities and we are determined to continue our plans to deliver better local services and lower council tax.

We're proud of our strong record which makes North Warwickshire a beautiful place to live, work and enjoy!

Over the last four years, we have....

- ✓ Kept recorded crime low.
- ✓ Protected the Green Belt.
- ✓ Made our roads safer.
- ✓ Reduced homelessness.
- ✓ Built more affordable homes than Labour did when last in office.
- ✓ Secured £2m worth of savings with no reduction in Council services.
- ✓ Tackled fly tipping with £65,000 worth of surveillance technology and evidence gathering operations.
- ✓ Supported local businesses and the high street economy.
- ✓ Invested in more effective bin collection services.
- ✓ Reduced the amount of off-road bike nuisance.
- ✓ Supported local community and voluntary groups.
- ✓ Cleared most fly tipping cases within a day.
- ✓ Legally challenged HS2 plans to protect our communities.
- ✓ Protected our local heritage.
- ✓ Invested in leisure facilities and sports pitches.
- ✓ Enforced injunctions on Just Stop Oil protests.
- ✓ Invested in a state-of-the-art recycling centre.

**North Warwickshire has the highest employment rates in the Midlands.**

**Our Borough has the lowest use of temporary accommodation in the County.**

**VOTE FOR YOUR LOCAL  
CONSERVATIVES ON MAY 4TH!**

 **Vote Conservative**

# Police News



All your latest news and information from the Warwickshire Police Local Policing Team for North Warwickshire South (Coleshill) and West (Water Orton/Curdworth)



Follow us on Facebook, search for: Atherstone & Coleshill Safer Neighbourhood Team or scan the QR code here.



## Coleshill Town MP surgery

PC Breeze from Coleshill SNT attended MP Craig Tracey's surgery at The Coleshill Hotel.

On Friday 31<sup>st</sup> March, PC Breeze had a productive day speaking with Craig Tracey MP and the local residents of Coleshill.

Several points have been taken on board and the team will be looking into them all.



Warning to local businesses in the Coleshill area we have received reports of fraudulent 50-pound notes being passed over.

Please double check any notes.

Officers are investigating incidents and information please call 101.



## Get your catalytic converter marked

Water Orton BMC Garage are now marking catalytic converters.

Following recent incidents of vehicle crime in the North Warwickshire area, Warwickshire Police are pleased to advise that there are a limited number of kits at BMC Garage in Water Orton where you can take your vehicle and have the catalytic converter marked for free.

Residents must be from North Warwickshire Borough. To arrange please contact the BMC garage and arrange an appointment to take your vehicle in.

**BMC Garage  
Marsh Lane  
Water Orton  
B46 1NW  
01217479966**



## OP REDUCE – vehicle crime

**\*\*OP REDUCE\*\***

Over the last month, officers from Atherstone & Coleshill SNT, Rural Crime, The Special Constabulary and Staffordshire Police took to the streets of North Warwickshire to tackle Vehicle Crime.

Over the past few months Vehicle Crime within North Warwickshire has been one of our priorities, however since the introduction of Op Reduce, figures have begun to drop. We will continue to work together with neighbouring forces, teams and partner agencies to combat these issues.

Here is a list of some of the things the team got up to.

- ▲ 120 PNC & Driving License Checks conducted
- ▲ 5 Pursuits
- ▲ 2 Cloned Vehicles identified
- ▲ 2 Stolen Vehicles recovered
- ▲ 1 Arrested for Theft of Motor Vehicle
- ▲ Traffic Offence Reports submitted
- ▲ Curfew checks of vehicle crime offenders conducted
- ▲ 8 Emergency Incidents attended



Further OP Reduce patrols are going to be conducted over the coming months.


 EST 1900  
**GASCOIGNES**  
*of Coleshill*  
 FAMILY FUNERAL DIRECTORS

 1900  
 2022

 OUR  
 FAMILY  
 HELPING  
 YOURS


### Independent Family Funeral Directors

Offering a complete, dignified and caring service to the community for four generations.

## 01675 462294

24 hour service | Private Chapels of Rest  
 coleshill@gascoignesfunerals.com

100 High Street, Coleshill B46 3BL  
 www.gascoignesfunerals.com

Prepayment Plans Available

Proud member of the  
 M G Evans Family

## FOR ALL TYPES OF GARDEN MAINTENANCE CHOOSE BARRATT GARDEN SERVICES



- Grass cutting
- Strimming
- Hedge trimming/reductions
- Green waste removal
- Tree pruning
- Tidy borders
- Garden design
- Planting
- Leaf clearance
- Jet washing
- Gutter vacuuming

## 07585 515156


**BARRATT**  
 GARDEN SERVICES


#barrattgardenservices

# Sampling Systems Food Bank

Local company Sampling Systems Ltd based in Forge Mills Park in Coleshill, have been overwhelmed by contributions from staff for their office Food Bank.

Lisa Wilcox, who is a reader at St. Nicholas & St. Peter ad Vincula, Curdworth instigated the suggestion that it would be very thoughtful & helpful to aid a community charity by taking up a challenge for Lent, and hence the food bank was "opened" in the office.

The donations kept on coming, and we are pleased to say that the contributions exceeded our expectations!

The company, "Sampling Systems Ltd" generously doubled the amount that was collected by employees.

All donations collected are being distributed from Erdington Food Bank which was established in 2013 and has been a "lifeline" providing emergency food to people in crisis.

EFB is part of the Trussell Trust and supports communities and churches to open foodbanks across the UK.

What a fantastic idea to encourage staff to take part whilst raising awareness, and all for a worthwhile and very needy cause in light of the economic crisis.



## Coleshill Ladies Probus Meeting

We met at the Coleshill hotel on Tuesday 28th March. Our speaker for the meeting was Mike Walpole on 'Cannons & Cannons'

It started with the Battle of Waterloo when a member of the Digby family was Captain of a ship and ended with Coleshill Church Tower.

Mike showed us slides of the church bells tolling and the progress of the clock, from being hand wound to now being fully mechanized.

We meet on the last Tuesday of each month at the Colehill Hotel.

Our meeting in April is chair yoga.

If you would like to join us, we will be pleased to see you.

Please call Dorcas on 01675 464686 or Gill on 01675 462541



# Precision Micro opens Apprenticeship Scheme to new applicants

Fort Dunlop-based engineering firm, Precision Micro, is launching its apprenticeship drive for 2023. The firm plans to welcome a brand-new cohort of 16-21-year-olds into its Apprenticeship Scheme this year, kickstarting careers in the engineering industry.

During the four-year placement, apprentices will have the opportunity to experience every department within Precision Micro, learning the key skills required to produce precision-etched metal components. Successful applicants will begin their apprenticeships in September, while working towards a Level 3 in Engineering with Birmingham Metropolitan College - James Watt Campus.

A proud Birmingham business, Precision Micro is management-owned and produces millions of high-quality precision etched components every year for the automotive, aerospace, medical and energy sectors. The company also has a long history of investing in its people, with its Director and Co-owner, Mick Taylor, himself starting out as an apprentice three decades ago.

Mick Taylor, Director at Precision Micro, said: "We've been investing heavily in our business in recent years, with millions of pounds put into expanding and upgrading our facility and equipment, so it's a really exciting time to be joining Precision Micro. Last year, four apprentices joined us and they're all flourishing within their roles, learning lots about our business and the industries which we support, as well as contributing to the high levels of quality we pride ourselves on."

Since 2019, Precision Micro has invested more than £5million in upgrading its facility, significantly increasing capacity and underpinning its growth strategy, with plans to invest a further £1.4million in 2023. This year, the company is targeting 20% growth and believes investing in apprentices will be key to achieving its ambitions and sustaining performance for years to come.

During National Careers Week (6th – 11th March), Mason Thompson – a first-year apprentice at Precision Micro – paid a visit to his former secondary school, sharing his experience and advice with youngsters.

Sarah Dullea, Careers Advisor at Plantsbrook School in Sutton Coldfield, said: "It was lovely to have Mason and his colleagues pay us a visit for National Careers Week and take part in our Careers Fair. As our students approach the end of their time at school, it's fantastic for them to hear from somebody who has been in their position so recently and made a really positive step into the world of engineering through an apprenticeship with a well established local firm."

**Precision Micro's Apprenticeship Scheme is open to 16-21-year-olds and applicants are encouraged to register their interest at [www.precisionmicro.com/apprenticeships](http://www.precisionmicro.com/apprenticeships).**



Precision Micro

## APPRENTICES WANTED

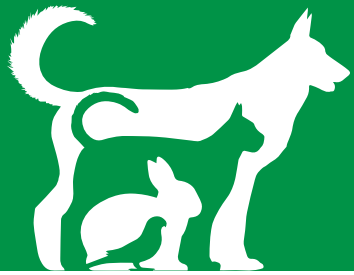
Career opportunities for 16-21-year-olds at world-leading, Castle Bromwich-based specialist engineering company.

At Precision Micro, we produce precision-etched components used in life-saving surgery, military jets, F1 cars, surveillance drones and more. Our grassroots apprenticeship program has played a significant role in our success. As we continue to expand, we are looking for 10 talented individuals to join our Fort Dunlop-based team this September.

Scan to apply!

Scan the QR code to apply or email [hr@precisionmicro.com](mailto:hr@precisionmicro.com) for details





# Pet Page

## Ward End Cat Rescue

Ward End Cat Rescue are fundraising at the PARTY IN THE PARK at Arden Hall in Castle Bromwich on the 7th May, see more details on the poster. We will be running a fabulous tombola and will have various exciting goodies to sell too, including our famous handmade WECR catnip Super Mice.

Please come and support us and help us raise much needed funds - look for our orange gazebo, you won't miss it!

Here are just two of our resident semi feral cats that live at the rescue, beautiful (but very anti social) Billie and handsome Guildo.



Billie



Guildo

**Email: wardendcatrescueofficial@outlook.com Facebook: Ward End Cat Rescue Official**  
**www.wardendcatrescue.org**



Ward End Cat Rescue  
Present by Royal appointment  
Our Amazing Tombola  
At the  
"Party in the Park"  
@  
Arden Hall  
Water Orton Road, B36 9PB  
Sunday May 7th 12 p.m - 5 p.m.

*"I wish I could go"*



## It's all about positivity

This month I am talking about positive reinforcement/reward, what it is and how it works.

Using positive reinforcement to train our dogs is a method of training where the desirable behaviours are rewarded to increase the likelihood that the behaviour will be repeated. The best reward is something that your dog finds valuable, such as a treat, toy, or verbal praise, and is given immediately after the desired behaviour occurs. This type of training is very effective and can be used to train your dog a variety of things, from basic cues like "down" to more complex behaviours like retrieving. By rewarding your dog for good behaviour, they learn what is expected of them and become more motivated to repeat those behaviours in the future.

Positive reinforcement increases the human-canine bond that you have with your dog, building a happy and trusting long-lasting relationship and helps your dog become more confident with you. Using positive reinforcement is also linked to better success at teaching a new behaviour, as your dog will want to please you and is relaxed about being with you.

For most, food is the best reward. Consider different types of food, as food can have a variety of values for your dog. However, you could also use your dog's favourite toy that you keep, especially for training. Used correctly, verbal praise and fuss can also be very rewarding. It's a fabulous way to build a great relationship and great results.



# ORCHARD NURSERIES

1973 - 2023

## Celebrating 50 years in Water Orton

- Our jumbo Surfinas are now ready, only 1 needed to fill a 12" hanging basket
- Also large selection of hanging basket plants and bedding plants
- Beautiful selection of Alliums in flower/bud
- Gorgeous Dicentra in pink or white
- Dwarf Rhododendrons and Azaleas **£12.50** each or **2 for £20**
- Lots of Grow your Own, including tomatoes, vegetable seedlings, strawberry plants
- Delbard roses, good disease resistance and highly scented
- New season magnolias and acers
- Melcourt peat free compost, as recommended by gardening 'which'
- While stocks last 'clover' quality compost with peat.






**The GARDENERS REST TEAROOM**

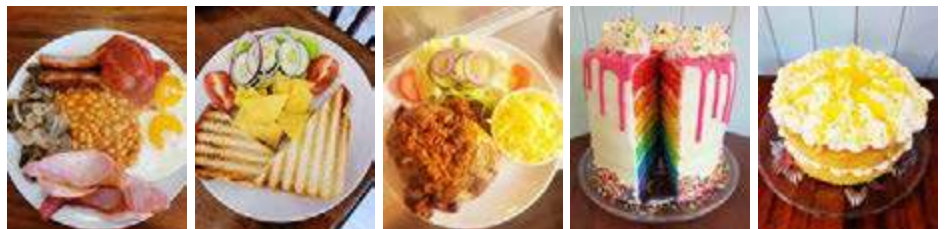
*Tea, Coffee, Cakes, Light Snacks - Eat in or Takeaway*

**Book now**  
**for our Coronation Afternoon Tea 7/8 May**  
**£35 for 2 people**

Come and enjoy our freshly cooked breakfast, Vegan and vegetarian options, hot and cold sandwiches, toasties, jackets, cream teas and of course homemade cakes - takeaway options available

Afternoon tea, prebooking required for up to 25 people  
 Whole cakes by preorder  
 Traybakes and brownies also available to order  
 Check out our Facebook page for more details  
 Booking welcome, message us or call

**Open currently Monday/Tuesdays 9.30 - 2pm**  
**Wednesday/Thursday/Friday/Saturday 9.30 - 3pm**  
**Sunday 10.00 - 2pm**



**ORCHARD NURSERIES** | BIRMINGHAM ROAD  
 WATER ORTON B46 1TG  
**0121 749 7266**  
 OPEN 10-5 MON - SAT 10-4.30 SUNDAY

Orchard Nurseries, Birmingham Road, Water Orton B46 1TG  
 Tel: 0121 749 7266 / 07450102855  
 Julie\_heenan@yahoo.co.uk

# Interiors & Decorating



PLATINUM  
INTERIOR DECORATING

## Decorating tips

**This month we'll have a look at wallpaper and give you some tips and tricks on hanging it to hopefully make the process easier and enable you to achieve a better standard.**

Initially the most important thing is making sure all rolls are the same batch number when purchasing the paper. Different batches can sometimes be slightly out in the pattern match or have discrepancies in the colour or shade. Also worth noting is whether the paper is paste the wall or paste the paper. Paste the paper needs pasting on a table and soaking for a specified period of time whereas with paste the wall you simply apply paste directly to the wall then apply the paper. Paste the wall is much easier and quicker to use and means that you don't need a paste table as you can hang it straight from the roll.

Once you've picked your paper you'll need to buy paste. Traditional flake paste is the cheapest option. This is the stuff you get in packets that you add to a bucket of water and gradually mix in. It is however worth looking at ready mixed pastes. The majority of professionals now use these, not because it's easier but due to them having added PVA and other additives they create a stronger more reliable bond. They come in a tub and are available in different strengths depending on the type of paper you're hanging and will usually need a certain amount of water adding to get them to the desired thickness for the job. There will be instructions for this process on the back of the tub.

Prior to starting the job you need to make sure you've got all the tools and equipment you're going to need. The essentials are a paste table, a good quality snap off knife that enables you to always have a sharp edge, papering shears or very good quality scissors, a paste brush or roller, plastic smoothing tool, or wallpaper brush depending upon the paper, lint free cloths or a sponge, a couple of pencils, bucket of clean water and either a spirit level or laser level although a laser is an expensive option if you're only using it once in a while.

As always before doing anything else we need to look at prep. this is as important with papering as it is with painting. Don't fall into the trap of thinking that wallpaper will cover and hide the imperfections in a wall. This is never the case unless it is a very textured paper with a busy pattern and even then it's not good practice to skip prep. Holes and cracks need to be filled and the whole walls sanded to make it as smooth as possible. The next consideration is lining paper. The age old debate is whether or not a wall in good condition requires lining prior to papering but this assumes that lining is purely about the condition of the wall. One of the main benefits of lining is that it evens out the porosity across the wall. This in turn will even out the drying time across the finish paper which will reduce the likelihood of seams opening up during the drying process. It's also worth checking the instructions on the label, many manufacturers will recommend lining. If you hang the paper without lining and there's any problems they often won't honour any refund agreements if you haven't lined the wall.

Another important thing to remember is to 'size' the wall before papering. This is a very important part of the process that many amateurs overlook. 'Size' is the name given to a more watered down, thinner coat of wallpaper paste that is applied to the wall- usually with a roller- prior to hanging the paper. Once dry this will slow down the drying time of the paste and create a more slippery surface making it much easier to position the paper and line up the pattern once it's on the wall.

The next thing to do is look at how to best set out the pattern. If you're papering the whole room with a patterned paper there will always be one corner where the pattern won't match up. The trick is to make this the least noticeable corner. The most common way to do it is to start at the corner where the door opens as this is usually not noticed when walking into a room. There are various other ways, it's just a case of spending a bit of time looking at the room and considering where the least obvious point will be.

Another thing to be aware of with patterns is where it sits on the wall. It can be tempting to just start at one end and work that way but it's always more aesthetically pleasing to centralise the pattern on a focal point such as a chimney breast or fireplace. Also consider where furniture will be. If there's a bed against the wall it usually looks better to centralise the pattern over the bed even if that point isn't central on the wall.

Finally before you start have a look at the paper, if it's a dark colour check the ends of the roll- if they are still very light it's worth colour them in with a pencil crayon that closely matches the paper colour. This will reduce the chance of noticeable seams between each drop on the wall. Many high end manufactures will recommend doing this on the hanging instructions.

Make sure all of your tools are laid out and available to hand, while hanging it's best to have a pouch with everything you need in it to save awkwardly reaching for tools while holding up paper. Use some kind of a straight edge such as a caulking blade to push the paper into corners and the ceiling line and run your sharp knife across it to cut the paper. This will ensure neat straight cuts. Again it's difficult to overstate the importance of a sharp knife, this will reduce the chance of the paper snagging while cutting- especially with heavily soaked papers.

It's difficult to describe techniques for things like working through internal corners and around external corners and window reveals etc. without visual demonstrations so if you're uncertain about any of that we'd recommend having a look at some You Tube demonstrations.

It's impossible for us to cover everything related to papering in one article but hopefully some of these tips will make the job easier for you. Following that it really is just a case of practice makes perfect. The most important thing is to take your time and not rush. Also read the instructions on the back of the label carefully, different papers will have different processes and if you don't follow them it can make the job more difficult than necessary.



*Julie*  
**ENGLISH**  
*Interiors*

BEDROOMS - BATHROOMS - KITCHENS - BEDROOMS

Create Your Perfect Space  
One to One Professional Advice &  
Guidance Every Step of The Way  
To Ensure Perfection  
Supply Only or Supply & Installation  
Service

Showroom: 205 Tyburn Road, B24 8NB 01214484290 or Contact [julie@julienglishinteriors.co.uk](mailto:julie@julienglishinteriors.co.uk)



**PRODUCTS**

**KITCHEN**

*Julie English Interiors*



# Orton Installations

**Windows • Doors • Conservatories**

**Guardian Warm Roof Specialist**



Windows (UPVC & Aluminium)

Doors (including Bi-Fold & Composite)

Conservatories

Garage Doors

Roof Lanterns

Domestic & Commercial Work

**T 0121 730 1587 / 07732 561 569**

**E matthew\_taylor10@sky.com**

32 Birmingham Road, Water Orton, Birmingham B46 1TH

# GET THE JOB DONE!

**OPEN TO  
TRADE & PUBLIC**



**EASYJoint**  
All Weather Joint  
Compound 12.5kg  
6 colours available

**£27.50**  
each

£33.00 inc. VAT



Price valid until 29th April 2023 for collected purchases only.

**Chester Road**  
Castle Bromwich, B36 0LB

**EH Smith**  
Builders Merchants



**HBFS EQUITY RELEASE LIMITED**



## 'Helping Retirees Enjoy Their Retirement'

*HBFS Equity Release Ltd only advise you on lifetime mortgages where you retain 100% ownership and the deeds to your property. All the products meet the standards and principles set out by the Equity Release Council so you have the peace of mind of knowing that you and your family are protected by these customer focused safeguards as well as being regulated under the Financial Conduct Authority.*

**CALL 01564 711015**

WE OFFER AN INDEPENDENT NATIONWIDE SERVICE

[www.hbfsonline.co.uk](http://www.hbfsonline.co.uk)

Email: [k.tedstone@hbfsonline.co.uk](mailto:k.tedstone@hbfsonline.co.uk) – [k.teague@hbfsonline.co.uk](mailto:k.teague@hbfsonline.co.uk)

HBFS Equity Release Limited Authorised and Regulated by the Financial Conduct Authority - Registration Number 304106



## Kavanagh's Kitchens and Bathrooms

32 East Meadway, Tile Cross, Birmingham B33 0AP  
Tel. No.: 0121 604 6464 Fax No.: 0121 784 8584

[www.kavsbathrooms.co.uk](http://www.kavsbathrooms.co.uk)



**THE COMPLETE DESIGN & INSTALLATION SERVICE**  
We offer a full installation service with a 3 year warranty

Visit our large kitchen & bathroom showroom  
established since 1989

**TEL: 0121 604 6464**

32 East Meadway, Kitts Green, Birmingham, B33 0AP

[www.kavsbathrooms.co.uk](http://www.kavsbathrooms.co.uk)



[www.facebook.com/kavsbathrooms](https://www.facebook.com/kavsbathrooms)  
[www.instagram.com/kavsbathrooms](https://www.instagram.com/kavsbathrooms)



Hudson Reed



CASSELLIE  
ELEGANT BATHROOMS





**All Pest Species Catered For**  
(except Mother in laws & teenage kids)



A Family run business established in 2006 offering industry accredited pest control & wildlife management at an affordable cost throughout Solihull & North Warwickshire.

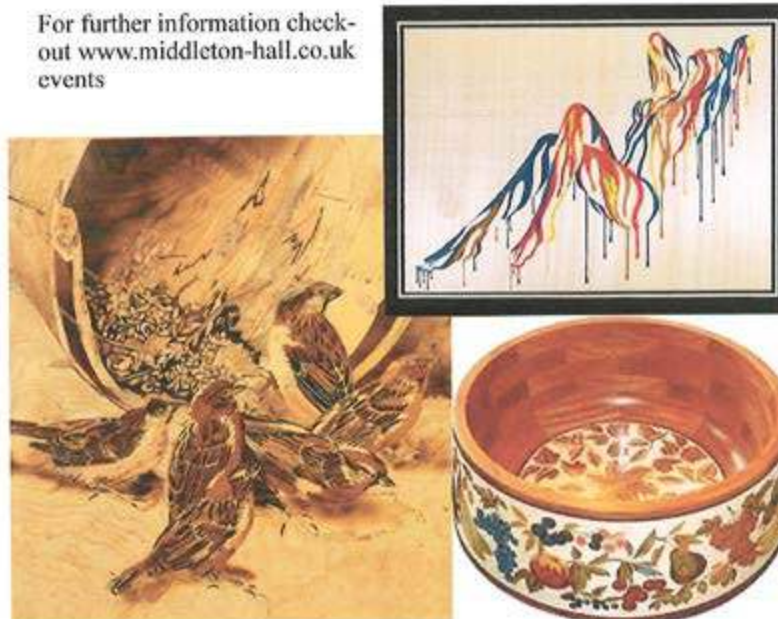
**0121 246 8879**  
**www.piedpiperpestmanagement.co.uk**  
**info@piedpiperpestmanagement.co.uk**

## INTERNATIONAL MARQUETRY EXHIBITION

27th May—2nd June 2023  
Middleton Hall, Middleton, Tamworth,  
North Warwickshire, B78 2AE

**Around 200 exhibits of the best of contemporary marquetry will be on display**

For further information check-out [www.middleton-hall.co.uk](http://www.middleton-hall.co.uk) events



Exhibition open 11am—4pm

# YARDLEY MEMORIALS

*We pride ourselves on personal service and customer care*

Yardley memorials offers a personal, sympathetic and professional service when you are faced with the painful and emotional task of choosing a suitable memorial for your loved one.



Call for a free brochure  
Tel 0121 706 2473

**200 letters  
free on new  
headstones**



**BRAMM**

Email [peter@yardleymemorials.co.uk](mailto:peter@yardleymemorials.co.uk) for any other inquiries  
**453 Stockfield Road, South Yardley, Birmingham, B25 8JH**  
Open Monday to Friday 10am-4pm,  
Saturday 12pm-4pm | By Appointment Only

Yardley Memorials are also based inside Widney Manor Cemetery for new memorials and flowers

# LOCAL SERVICES



**GODWOOD GLASS & GLAZING**  
Est 1982

 Broken Glass Replaced  
Broken or Misted Double Glazed Units  
UPVC & Aluminium Window Repairs  
Handles & Hinges Replaced  
Window & Door Locks Fitted  
All Types of Glass Fitted  
No Job Too Small

**FOR A FREE QUOTE CALL**

Call 07787 804153 and I will call you straight back  
Your Local Castle Bromwich Glazier

  
**PLATINUM**  
INTERIOR DECORATING

Contact Jim or Clare for a free quote on:  
0121 747 7202  
07814 566657 or 07792 508819

We are a husband and wife painting and decorating team

- Free written quotes
- Friendly, clean and reliable service
- Advice available on colour matching

All aspects of domestic and small commercial projects undertaken

info@platinuminteriordecorating.co.uk  
www.platinuminteriordecorating.co.uk

**Xtreme Tree Care**

- Crown Thinning and Reduction
- Felling and Dismantling
- Pruning and Shaping
- Hedge Trimming and Removal
- Specialist Stump Removal

Fully Insured  
All Staff Fully Qualified  
20 Years Experience

For a free quotation from your Local Tree Surgeon call  
**07951 332 401**

11 Shawbury Cottages, Pump Lane, Shustoke, Coleshill B46 2RW  
xtreemetreecare@aol.co.uk



**COLESHILL ROOFING**

- UPVC Fascia & Soffits
- Tile, Slate & Flat Roofing
- Hi-Performance Torch on Felts
- Maintenance Free Guttering Repairs
- Full Insured for your peace of mind
- Skilled, Qualified Craftsmen

**OVER 40 YEARS EXPERIENCE**

**CONTACT US FOR A FREE QUOTATION**



**01675 462 344**  
07956 890 488 / 07966 409 706  
coleshill.roofing@yahoo.co.uk  
www.coleshillroofing.co.uk

**Dimension Landscape & Driveways Ltd**

0121 690 2271 | 01926 940 854  
01564 791 228 | 07341 985 164

**FREE QUOTATIONS**  
**DISCOUNT PRICES**

BLOCK PAVING | TARMACING (RED OR BLACK) PATIOS | GRAVEL | DRIVEWAY MAINTENANCE  
RESIN DRIVES & PATIOS | CONCRETE RECOLOURED  
LANDSCAPING | BRICKWORK | SLABBING  
FENCING | PROPERTY & ROOFING REPAIRS  
PRESSURE CLEAN & SEAL

QUALITY MATERIALS SUPPLIED BY  
 

enquiries@dimensiondrivewaysltd.co.uk  
Yew Tree Cottage, Box Trees Road, Hockley Heath, Dorridge. B94 6EB  
Visit our website to view recently completed work in your local area.  
**www.dimensiondrivewaysltd.co.uk**

**ADVERTISE HERE**

For prices, media pack and more information  
Call 0121 749 7502 / 07805 430191  
or email: serena.postgroup@outlook.com

 **POST GROUP**  
MIDLANDS LTD

 **SHARE A STORY**

contact:  
**serena.postgroup@outlook.com**

 **POST GROUP**  
MIDLANDS LTD

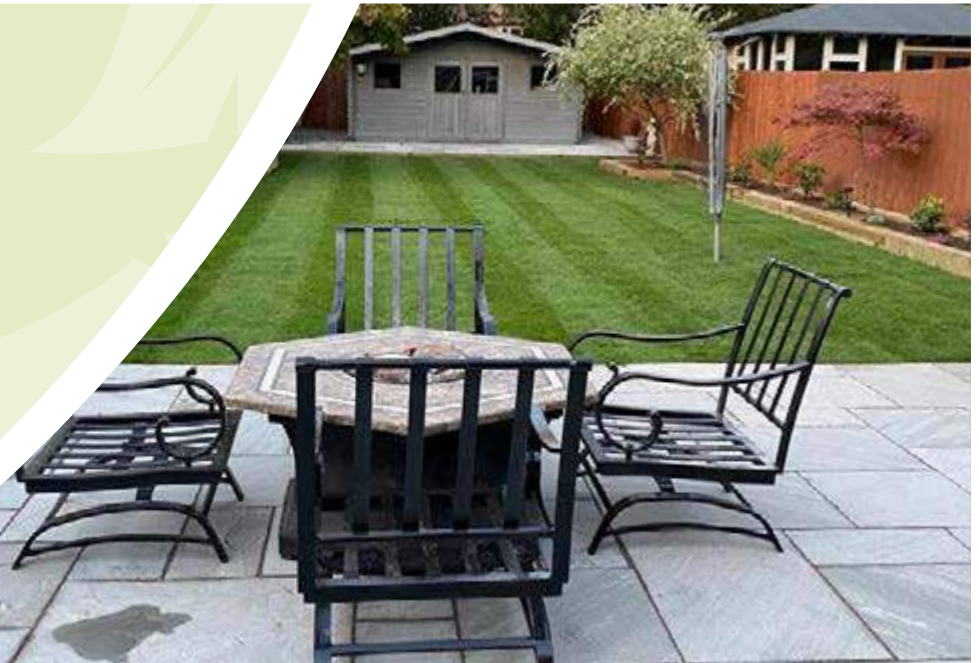
# FLOWERS

Landscape Gardening & Block Paving Specialists



- Block Paving
- Porcelain paving
- Resin Bond driveways
- Tarmacing
- Slabbing
- Drive Repairs
- Turfing
- Grass Cutting
- Fencing
- In-print concrete driveways
- Specialists in Natural stone/sandstone
- Garden Walls
- Garden Clearances
- Rubbish Removals
- Hedge Cutting
- Tree Felling
- Trees Lopped
- Trees Pruning

ALL WORK IS GUARANTEED & CARRIED OUT BY FULLY INSURED WORKMEN



Call for a FREE no obligation quote

T. 0121 770 0362 M. 07773 503816

[flowers-landscaping.co.uk](http://flowers-landscaping.co.uk)



**OPEN 6 DAYS A WEEK**

**0121 789 6549**

**FAST, RELIABLE, PROFESSIONAL  
SERVICE WITH NO HIDDEN EXTRAS**

- ⊗ 2000+ TYRES IN STOCK
- ⊗ EST OVER 18 YEARS
- ⊗ BRAKES SUPPLY + FIT (CAR & VAN)
- ⊗ PUNCTURE REPAIRS
- ⊗ HUNTER 4 WHEEL ALIGNMENT

#### Flaxley Tyres

FOR ALL YOUR TYRE NEEDS



#### Flaxley Alignment Centre

WE OFFER A FREE CHECK ON THE HUNTER ALIGNMENT SYSTEM



flaxleytyres



[www.flaxleytyres.co.uk](http://www.flaxleytyres.co.uk)

Unit 1, Imex Business Park, Flaxley Road, Stechford B33 9AL

## COLESHILL & DISTRICT GARDENING CLUB

**Monday 15th May we will be doing "HANGING BASKETS"**

**7.30pm at COLESHILL TOWN HALL, High Street, Coleshill. B46 3BG**

We ask you to bring your basket and liner, we will provide the compost. There will be plants for sale to put in the baskets, or you can bring your own. We will guide/help you to plant your basket.

**Members £3.50**

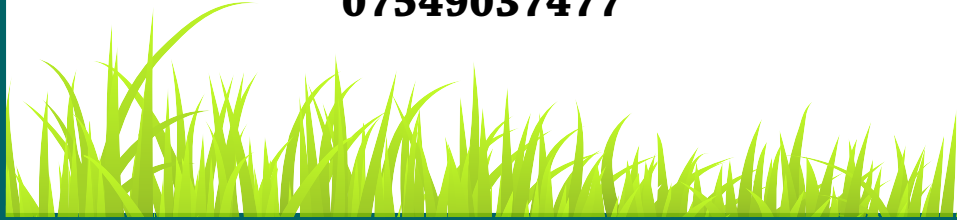
**Non Members £5**

**Newbies more than welcome.**

**Refreshments are included.**

**REMEMBER! IT'S AT THE TOWN HALL!**

**For more information contact Meda on 07549037477**



## The Coleshill Knitting Group

The Coleshill Knitting Group created a right Royal Knit up for our lovely Coronation post box in Coleshill Library. Drop by to see Charles and Camilla, the soldier, beefeater, George the horse and the Golden Carriage.



## Happy Fungal Infection Awareness Month!

You may not be aware but May marks Fungal Infection Awareness Month! Fungal infections can affect the skin and the nails and are extremely common.



A fungal infection of the skin is called "Athlete's Foot". It is most associated with itchiness (particularly in between the 4th and 5th toes), white rubbery skin (particularly in between the 4th and 5th toes), redness around the borders of the foot. You may even get small pustules appear. Athletes foot is very common. We have fungi living on our skin every day, but our skins natural pH (chemical balance) is what stops us having repeated infection.

When this delicate balance is altered, we can get a fungal infection. Lots of things can cause this disruption in the chemical balance including high sugar levels, temperature, stress, and medication. Inside our footwear it is dark, warm, and sweaty and this provides the perfect environment for fungi to thrive. There are lots of different treatment options available for athletes' foot but it's important that you treat your shoes and socks too. We recommend washing your socks on 60 degrees and making use of our Klenz machine for your shoes. Our Klenz machine will kill off any fungi or bacteria that may be in your shoes and can help prevent re-infection.



As mentioned, fungi live on our skin all the time. When our nail becomes damaged from trauma, incorrect nail cutting, poorly fitting shoes or socks etc, the fungi living on our skin can invade the nail causing it to become discoloured, crumbly, or thickened. A fungal nail infection can be stubborn but there are many treatment options available. As well as treating your nails we also recommend treating your skin for athletes' foot as the infection can easily transfer from skin to nail.

If you think you may have a fungal infection and want to know what treatment is more suited to you, then you can give us a call on 0121 749 6313 and book in to see one of our HCPC registered Podiatrists.



**To GOD be the GLORY for ever and ever. AMEN.**

We are an Assemblies of God (AOG) Pentecostal Church who meet every Sunday for praise and worship, and to spend a time of intimacy with God.

**Searching for answers to the big questions of life?**

**Are you hungry for more of God?**

**Or simply curious to know how we "do church"?**

**All are welcome to join us**



**Sunday 10.30am  
Victory Hall  
76 Chester Rd  
Castle Bromwich  
B36 9BU**



**Sunday 6.00 pm  
Coleshill Town Hall  
High Street  
Coleshill B46 3BG**

We have various Bible study and prayer groups during the week as well as a Craft Club at Victory Hall.

Or join us at **The Filling Station at Knowle Village Hall**, St John's Close Knowle B93 0NH on the first Monday of each month for a joint worship meeting with various church denominations around the area.

**For more details see our website on: [www.mcflifechurch.com](http://www.mcflifechurch.com)**

# Local Sports



## Old Saltleians RFC

### New Era of Rugby in Coleshill



**Old Saltleians Rugby Football Club have begun a new era of rugby this season. Our historic rugby club moved to a new home in Coleshill for the third time in its 84-year history after its old site was bought by HS2.**

It has been a difficult time for Old Salts but, with the club opening for its first home match in December 2022 we can now look forward to a more secure future and an opportunity for the club to set down permanent roots and ensure its presence in the local community provides real value.

Club chairman Mick Lee added: "Old Salts has always been a community rugby club, providing a strong, vibrant identity in the local area for youth and adult players and spectators."

As a fully inclusive club we are proud to offer rugby for all ages, from 2 to 92! We have a fantastic purpose built clubhouse with bar and kitchen facilities – as well as being home to 1st XV, 2nd XV a VETS team.

We offer Walking Rugby on Thursday evenings 6-7pm which is suitable for all ages, genders and abilities, aimed at boosting physical, social and mental wellbeing through non contact simplified rugby.

Old Salts are also incredibly pleased to announce the start of their Women and Girls Section 'Salts Sabres' – with over 20 players joining as touch and contact players in the first few weeks alone. We are all ready for the 2023/2024 season ahead and joining the Allianz Inner Warrior League. The Women train every Wednesday night 7 – 8:30pm and always on the look out for new players, no experience necessary.

As Women and Girls Head Coach I am so excited to be involved in the clubs journey, not only to support the clubs growth, but also rugby can empower young girls to develop their inner confidence. The girls inspire each other to help them leave their comfort zone. I love seeing the passion that youngsters have and what they can achieve.

As part of our busy social calendar, come and join us in celebrating King Charles III Coronation on Sunday 7th May, 11am – 5pm. We will be hosting all kinds of fun family games and activities, as well as, celebrating our Mini and Youth Sections 'End of Season Awards'.

We have many children's Summer camps and taster sessions to also take part in, before the start of the new season in September.

Rugby is a fun – packed way to get outside, get muddy and experience the dynamic, exhilarating sport for the first time, and if nothing else meet new people. With plenty of help on hand, we will introduce you to the basics of rugby – passing, kicking and tackling, coupled with enjoyable fitness routines – helping you step out of your comfort zone – whatever your age!

**To find out more follow 'Old Saltleians RFC' on Twitter, Facebook and Instagram or [www.oldsaltleians.com](http://www.oldsaltleians.com)**







# Coleshill Town F.C.

## Coleshill Town FC match reports

### All Northern Premier League Midland Division games

#### Monday 27th March

##### Coleshill Town 2-4 Harborough Town

Six games to go and Coleshill still pushing for a play off place. Coleshill got off to a great start and were 2-0 up after just 15 minutes with two crackers from Alex Tomkinson. Harborough scored a goal just before half time that gave them hope and they went on to play the best 45 minutes seen at Pack Meadow this season and fully deserved their 3-2 win.

#### Saturday 1st April

##### Halesowen Town 2-0 Coleshill Town

I think Coleshill were still shell shocked after the Harborough game as they weren't at their best and in a five minute spell just after half time Halesowen scored twice to take the points. Is that the Play Offs out of sight now!

#### Saturday 8th April

##### Spalding United 0-1 Coleshill Town

Two defeats in a row and any hope of the play offs were fading. Coleshill needed to regroup, dig deep, defend well and that's exactly what they did against Spalding. Not a great game to watch but Coleshill got the job done and had a bit of luck as Josh Willis scored the only goal.

#### Monday 10th April

##### Coleshill Town 1-0 Bedworth United

Again, not a classic but a very hard working performance against our North Warwickshire neighbours Bedworth United. A very windy day that spoiled the entertainment but the only goal was a cracker. Kai Tonge took a free kick

just outside the box, he bent the ball round the wall, wind assisted, and the ball went in off the post.

#### Saturday 15th April

##### Coleshill Town 2-0 Boldmere St Michaels

Another crunch game. The Mikes currently occupied the last play off place but the Colemen were just One point behind. The first game at Boldmere finished level as there is little between these sides and this game was the same. The turning points came when keeper Paul Hathaway made a match winning save then Fraser Doyle went up the other end and scored a cracker, his first and only goal for Coleshill, so far! Amarvir Sandhu came on for a cameo 15 minutes but in that time scored Coleshill's second.

#### Saturday 22nd April

##### Shepshed Dynamo 0-2 Coleshill Town

So Last Game Of The League Season and with Three straight wins, no goals against, Coleshill were in the last Play Off place but six teams were waiting to pounce on any slip up. Another tough game as Shepshed pushed Coleshill all the way. All was even but when Ewan Williams went down in the box just before half time Kai Tonge scored from the spot for his 35th goal of the season. Two minutes into the second half it was 3-0 as he scored his and Coleshill's second. Keeper Paul Hathaway made two quality saves in the dying minutes to keep another clean sheet.

**Coleshill finished the season in 5th place with 69 points, the highest position, and the most points, in the highest league the club has ever played in, in their 138 year history.**

In the Play Offs, 2nd plays at Home to 5th, and 3rd plays at Home to 4th. The highest placed winner plays at Home to the other winner to gain promotion to the Northern/Southern Premier League.

#### Halesowen Town v Coleshill Town

#### Spalding United v Sporting Khalsa

## Pitching in Northern Premier League Midland Division Season 2022/2023

### CTFC Fixture List

#### Tuesday 25th April

##### Halesowen Town v Coleshill Town

A ONE OFF GAME, played to a finish on the night, penalties if necessary.

#### Saturday 29th April

Winners of Halesowen Town v Coleshill Town will play the winners of Spalding United v Sporting Khalsa.

Winners of this game get promoted to the Northern/Southern Premier League, Level 3 in the Non League Pyramid.

*All Fixtures are League and 3pm kick off unless stated.*



## Water Orton & District Tennis Club



**Water Orton & District Tennis Club are so pleased to continue our work with The Woodlands School in Coleshill, as we prepare to start, what will be our 8th year working with them.**

The LTA and The Dan Maskell Tennis Trust have recognised the voluntary work we do with the school, and as a community club we are really pleased to be able to help these youngsters when they visit our club. The LTA have donated a tennis equipment bag which we recently handed over to the school, so now the younger children can play tennis in the school hall. We would like to thank the Midlands Disability Lead, Matt Elkington who organised the equipment donation in recognition of our work, and the school were so pleased to receive this award. The Dan Maskell Tennis Trust have awarded our club some funding, which will enable us to replace our junior coaching equipment, to allow us to take this valued project to the next level.

The Woodlands School is for children with profound learning difficulties and disabilities. Unfortunately, space outside the school is limited and sadly they do not have the means to accommodate all of the activities they want to do within the school. As a result, they are so thankful to visit a recognised community club and enjoy the facilities and the fresh air.

The School Head of P.E. Phil Sower said " Finding venues and qualified coaches who can offer what our pupils need is not an easy task and we cannot express our gratitude enough to Paul and everyone at Water Orton Tennis Club for their support for us at The Woodlands"

They visit our club twice every school term week from mid-April until the October Half Term and it is a pleasure to have them visit us. Our club also work closely with several other local schools and have done so for several years.

We also have Adult Beginners Classes on a Monday evening, Cardio Fitness Tennis on Friday evenings, Ladies Night each Thursday and Men's Night every Wednesday.

In addition, we have junior coaching groups every Saturday mornings and Youth Coaching on a Monday evening. All of our coaches are qualified and registered with the LTA and we would be pleased to welcome any new members.

If anyone would like more information on our Membership or Coaching Programme, then please contact our Club Secretary Paul Messenger on 07538 601246 or please e-mail paul.messenger82@hotmail.co.uk.

# Walk On

## FLOORING

CARPET AND VINYL SPECIALISTS

### OPENING TIMES

Mon - Fri 9:00am - 5:30pm  
Saturday 10:00am - 4:00pm  
Sunday CLOSED

TEL: 0121 770 9680



**HALF PRICE CARPET  
REMNANTS WHILE  
STOCKS LAST**



Vinyls  
From £8.99 sqm



Carpets  
From £6.99 sqm



Laminate  
From £11.99 sqm



Rugs  
From £30 each

## Why choose Walk On Flooring?

- ★ Local fitters with over 25 years trade experience
- ★ Wide range of carpet and vinyl pattern books
- ★ All work is guaranteed and insured

Home Selection Available!

[www.walkonflooring.co.uk](http://www.walkonflooring.co.uk)

Quality room  
size remnants  
from only  
**£29.00**



Like us on  
**Facebook**

**Showroom:** Unit 3, Tile Cross Trading Estate, Tile Cross Road, Tile Cross, Birmingham B33 0NW

# Labour's plan for North Warwickshire

**The Conservative cost of living crisis is hitting residents, communities, and businesses hard. We are facing the biggest fall in living standards for a generation. A Labour council will be on the side of hard-working people.**

We will change the way the council operates to **put hard working people at the centre of what we do**. We'll keep council tax low, reduce unnecessary spending and put the funds we do have into measures that will help those most in need as well as regenerate the services that have been undervalued and underfunded by the Conservatives for far too long.

**Labour's pledges at this election will help to change 8 years of Conservative control in North Warwickshire. It's time to build a better borough, putting local people first.**



## Urgent support to tackle the Conservative cost of living crisis



Liz Truss wrecked our economy, costing local residents hundreds of pounds extra every month. Rishi Sunak has imposed the highest taxes in over 70 years.

**A Labour Council will be on your side**, fighting against the Conservative's economic mess and investing locally to support all our residents, help our most vulnerable, support our businesses and create better jobs.

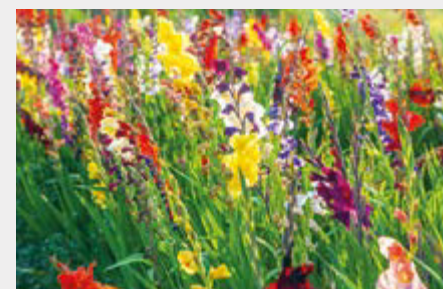


## Review the Conservative housing plan. Putting people before developers



Labour supports new homes for local people and new jobs to grow our local economy. But the Tory Housing Plan doesn't properly reflect the needs of local people. It puts too much housing in communities like Polesworth, Dordon, Ansley Common, Hartshill and Atherstone. It fails to deliver 40% affordable housing and so many local people cannot afford to live here.

**Labour will review the Housing Plan.** Putting people before developers. We will build affordable homes, including more council homes so our young people can live, work and thrive in the area they have been brought up in alongside their families.



## Deliver decent services - creating a cleaner, greener and more effective council



The Conservative Council hiked up your council tax and cut public services. We pay over £2000 a year more for fewer services. With additional charges for green bins and parking. They closed the council's front desk and community hubs, scrapped dog wardens and cut support for the elderly. Our green spaces have been neglected and fly-tipping is a blight on our beautiful borough. They don't care and nothing changes.

**Labour will invest** in our green spaces, and parks and reduce parking charges. We will build new leisure centres in Polesworth and Atherstone, ending a decade of Conservative neglect that has left our leisure centres in a desperate state.

## Invest in keeping our communities safe, with resources and real action



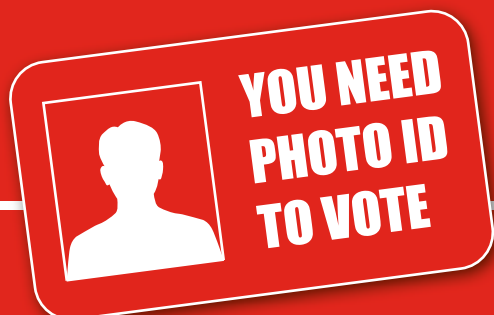
After 13 years of Tory cuts people feel let down on crime. They closed our Police Stations, turned off our streetlights and reduced community policing. There are huge concerns over safety with our communities plagued by antisocial behaviour, vehicle theft, burglary, and dangerous roads; people don't feel safe.

**Labour will invest** in local CCTV, campaign for better streetlights and work with the Police to bring community wardens to our communities to clamp down on anti-social behaviour. We will campaign for tougher action to tackle our dangerous roads and junctions.



## Things to remember:

- 1 YOU NEED PHOTO IDENTIFICATION TO VOTE**
- 2 Polls open 7am - 10pm on Thursday 4 May**
- 3 YOU DON'T NEED YOUR POLLING CARD TO VOTE**
- 4 You can apply for an emergency proxy vote and appoint someone to vote on your behalf up until 5pm on polling day**
- 5 If you have a postal vote and haven't sent it back yet, you can drop it off to the address on the envelope, or you polling station before 10pm on polling day**



**VOTE LABOUR ON MAY 4TH!**



Do you think  
local people  
should feel  
safe and  
secure in our  
community?

## **THE CONSERVATIVES DON'T.**

Under the Conservatives:

- Knife crime has soared and anti-social behaviour blights our community
- Our street lights have been switched off
- We have fewer community police officers than ever before
- Fewer people are being brought to justice in our courts